



**Adam Tas Corridor Energy**

# **Safe City-Level QSFP Optical Module EML Selection Guide**

Rear of the optical fiber distribution box





## Safe City-Level QSFP Optical Module EML Selection Guide

---



### The Ultimate Guide to QSFP Cable: Everything You

Discover everything you need to know about QSFP cables with Fibermall's expert insights!

### Comprehensive Guide to QSFP - MapYourTech

QSFP modules employ various optical connector types depending on the application and reach requirements. The mechanical interface must ensure



### SFP vs QSFP: The Definitive Technical and Strategic Guide

Decisions regarding optical transceivers, commonly referred to as optical transceivers, will mark a pivotal turning point for network architects. A poor choice of form factor can waste millions

### 400G OSFP/QSFP-DD/QSFP112 Module Introduction

This article explores the technical characteristics, product lineup, and use cases of 400G



OSFP/QSFP-DD/QSFP112 modules to choose the most

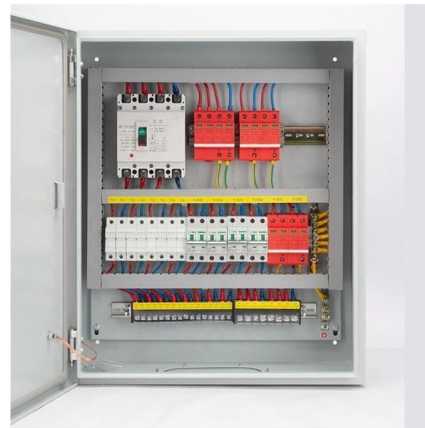


### **SFP vs SFP+ vs SFP28 vs QSFP+ vs QSFP28: 2026**

A practical, engineer-friendly guide to choosing the right transceiver form factor by speed, port density, power, migration plan, and operational

### **SFP Optical Module Selection Guide for 2025: Key**

Explore our comprehensive SFP optical module selection guide for 2025. Learn about crucial factors like data rate, distance, fiber type, and



### **400G QSFP-DD FR4: Definitive Technical & Deployment Guide**

Discover the standards, technical specifications, deployment tips, and vendor selection for 400G QSFP-DD FR4 modules, enabling high-density, low-power, scalable 400GbE interconnects



## Cisco Optical Transceiver Handling Guide

Handling Guidelines for QSFP-DD, QSFP, SFP Transceiver This guide describes the general handling measures and precautions when handling optical transceivers to ensure they can be handled with



## Optical Transceiver: SFP vs SFP+ vs QSFP28 vs QSFP-DD

This article provides a comprehensive comparison of mainstream optical transceivers, including SFP, SFP+, QSFP+, QSFP28, and QSFP-DD. It explains their technical differences,

## 400G OSFP/QSFP-DD/QSFP112 Module Introduction and Selection Guide

This article explores the technical characteristics, product lineup, and use cases of 400G OSFP/QSFP-DD/QSFP112 modules to choose the most suitable 400G solution for your data centers.



## QSFP28 vs. QSFP-DD: How to Select the Right

QSFP28 vs. QSFP-DD explained for engineers. Compare electrical lanes, speed, power, compatibility, and deployment scenarios to select the right



## FS Community

Hier sollte eine Beschreibung angezeigt werden, diese Seite lässt dies jedoch nicht zu.



## STANDARD SELECTION OF OPTICAL TRANSCEIVERS

The SFP28 transceiver modules are designed to transmit and receive 25G serial optical data over single mode optical fiber up to 15km Digital diagnostics functions are available via a 2-wire serial I2C interface

## OptoIC Products Brochure

Introduction This design guide provides the information needed to incorporate OptixCom's fiber optics products in the customer's system. The QSFP+ series of transceiver products are designed to



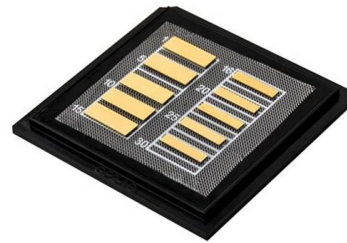


## What are the key considerations for selecting SFP vs QSFP Optical

After reading this article, you'll no longer be confused by SFP and QSFP, and you'll be able to quickly determine which type of optical module is more suitable for your needs.

## Comprehensive Guide to 400G/800G QSFP-DD Optical

Applications of 400G/800G QSFP-DD Optical Modules The 400G/800G QSFP-DD optical modules leverage a double-density design to



## 100G Optical Module Selection Guide: Advantages and Types of

Explore the QSFP28 100G optical module, a vital component for high-speed network connections. Discover its unique features, advantages, and various types to meet diverse

## The Ultimate Reference Table for SFP & QSFP Optical Transceiver

The definitive guide to SFP, QSFP, and QSFP-DD standards for 2025. Compare 400G/800G optics, understand PAM4 complexity, and master QSFP-DD vs OSFP deployment



### **QSFP-DD Optical Module Overview: What is the differ?**

This article will introduce the next generation optical module in detail, QSFP-DD, also known as quad small factor pluggable, and this article will also



### **How to Choose QSFP-DD: Step-by-Step Selection Guide**

Learn how to choose QSFP-DD transceivers for 400G/800G networks, including reach, compatibility, power, and breakout options.



### **QSFP Optical Module Guide: 40G to 800G Evolution & Selection**

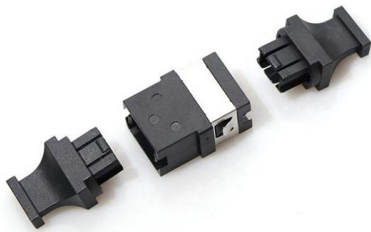
The definitive guide to the QSFP optical module series (40G, 100G, 400G, 800G). Learn the technical differences, evolution path, and optimal selection criteria for QSFP+, QSFP28, QSFP





## QSFP28 Transceiver: Complete 100G Connectivity Guide (2026)

QSFP28 transceiver guide covering module types, pricing, compatibility, and deployment. Learn how to choose, deploy, and troubleshoot 100G QSFP28 optics.



## QSFP-DD Optical Transceivers - MapYourTech

By the conclusion of this guide, you will possess a comprehensive understanding of QSFP-DD technology sufficient to make informed decisions

## 400G QSFP-DD LR4 Optics: Architecture, Specs and Application

Learn how 400G QSFP-DD LR4 transceivers work, including CWDM4 wavelengths, EML lasers, key specifications, and applications in high-speed data center networks.



## 40G QSFP: The Core of Optical Network Interconnection

Learn how QSFP works, and why it is essential for optical networks. Explore selection tips for data centers and high-speed connectivity.



### Cisco QSFP-100G-ER4L-S Compatible 100GBASE-ER4

Cisco compatible QSFP-100G-ER4L-S optical transceiver modules from QSPTEK equipped with LC duplex connectors that can transmit 40km through SMF OS2



### QSFP 40G LR4 Transceiver: 10km Single-Mode Optical Solution

A QSFP 40G LR4 transceiver is a 40Gbps optical module designed for up to 10km transmission over single-mode fiber using four CWDM wavelengths around 1310nm. It is standardized under 40GBASE

### 8438\_FRT.doc

In order to allow access to multiple QSFP modules on the same 2-wire serial bus, the QSFP pinout includes a ModSelL or module select pin. This pin (which is pulled high or deselected in the module)





## **QSFP-DD**

QSFP-DD, QSFP-DD800, and QSFP-DD1600 support the continuing growth in the bandwidth demand and datacenter traffic driven by networking and AI/ML

## **Contact Us**

---

For datasheets, pricing, or custom telecom energy solutions, please visit:  
<https://www.koskolong.co.za>