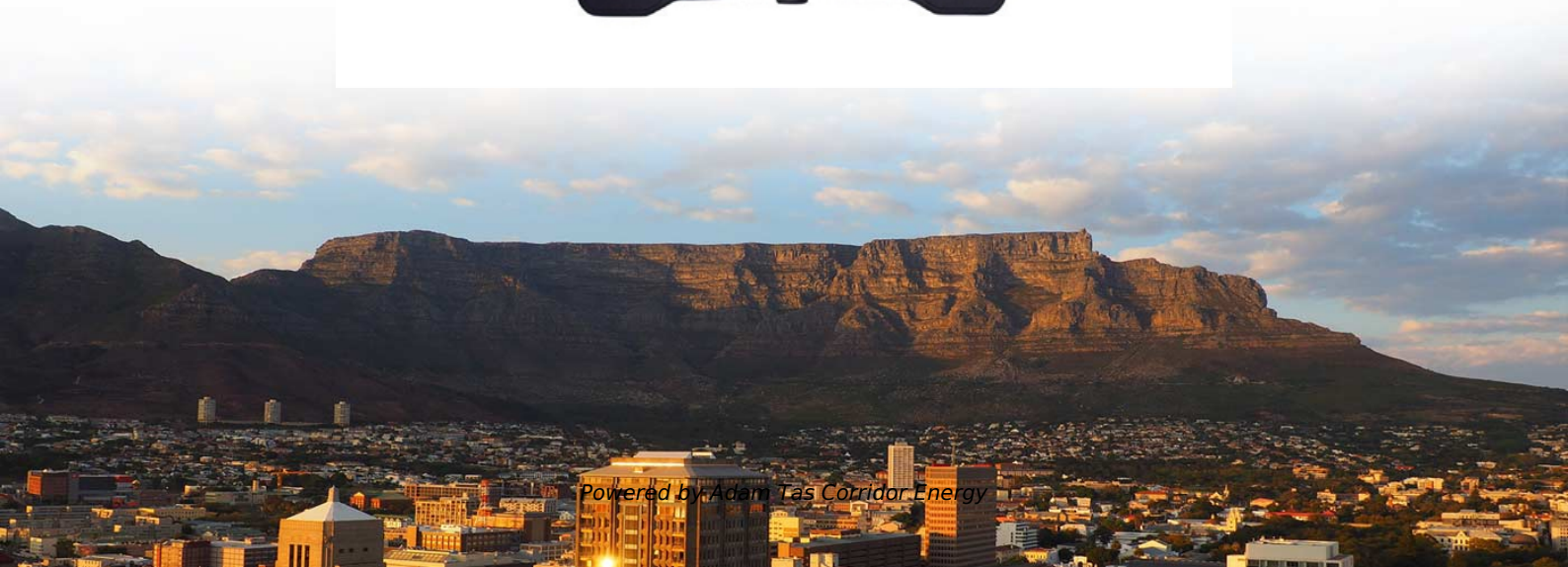




**Adam Tas Corridor Energy**

# **Selection Guide for 1 6T Vehicle-Mounted Fiber Optic Single-Fiber Bidirectional Systems**





## Selection Guide for 1.6T Vehicle-Mounted Fiber Optic Single-Fiber B

---



### BiDi SFP Module: A Complete Guide for Fiber Networks

A BiDi SFP module is a bidirectional fiber optic transceiver that enables simultaneous transmit and receive over a single strand of single-mode fiber, instead of the traditional two-fiber setup. In practical

### Bidirectional SFP Selection Guide for Single-Fiber Links

Learn how to choose the right bidirectional SFP for single-fiber links. Compare wavelengths, distances, and compatibility to optimize your optical network.



### Charting the Path Toward 1.6T and 3.2T Optical Module

This process entails the manual assembly of free space DMLs, EMLs, photodetectors, isolators, optical multiplexers and demultiplexers, lenses, and

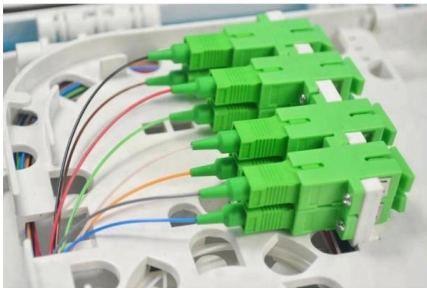
### Optical Fiber Selection Guide

We recently added a number of new products to meet continuously evolving requirements for state-of-the-arts experiments, especially fiber



## Charting the Path Toward 1.6T and 3.2T Optical Module

The path to 1.6T and 3.2T Transitioning from 800G to 1.6T optical modules as AI workloads in data centers escalate will effectively double the bandwidth capacity



## White Paper

7 In recent years, more enterprise and data center networks have adopted single-mode fiber optics. Traditionally, single-mode has been limited to applications such as long haul, service provider



## 1.6T OSFP: The Complete Guide to Next-Generation Data Center

This guide covers what 1.6T OSFP is, how it differs from 800G, what OSFP-XD brings to the table, and what you need to know before deploying. FiberMall supplies 1.6T OSFP modules and





## SFP Single Fiber 80 km transceiver , 1G ZX Ethernet

OptoSpan 80 km Single Fiber SFP transceiver for 1G ZX Ethernet. 1Gb single strand bidirectional SFP transceiver for single-mode fiber. Details: This advanced 26dB transceiver is designed for highly



- IP65/IP55 OUTDOOR CABINET
- OUTDOOR MODULE CABINET
- OUTDOOR 5G BASE STATION CABINET
- WATERPROOF

## OSFP1600\_and\_OSFP-XD

This whitepaper summarizes the OSFP-XD mechanical, electrical, and thermal design capabilities. We expect the specification to be released early Q4 '22 and the first 1.6 Tb/ s OSFP-XD systems in the

## Fiber Optic Cable

Automation or factory floor areas where in non-plenum environments will use riser fiber optic cable. Harsh environmental conditions may be present, such as mechanical vibration, ingress potential,



## Understanding Single Mode Fiber: 2024 Updated Guide

Single mode fiber represents the pinnacle of optical fiber technology, offering unparalleled capabilities in high-speed data transmission over vast



## Single-mode Optical Fiber Selection Guide

The guide describes several families of Lightera optical fibers and provides recommendations for single-mode fibers used in Outside Plant (OSP) as well as Indoor (Premises, Enterprise) applications and



## BiDi Optical Modules: Unlocking Single-Fiber

Comprehensive guide on BiDi Optical modules, detailing single-fiber bidirectional connectivity, deployment tips, troubleshooting, and multi-speed

## Single-Mode Fiber-Optic Cabling:

Explore the high-speed world of single-mode fiber-optic cabling, where data travels on beams of light, offering unparalleled efficiency.





## Single Fiber Bidirectional SFP Transceivers

Single Fiber Bidirectional SFP transceivers use simplex single-mode fiber to double the bandwidth, data rates up to 4G and distances up to 160km.

## Bidirectional SFP Selection Guide for Single-Fiber Links

This guide explains how bidirectional SFP technology works and outlines the key specifications to consider when selecting modules for single-fiber links. It also covers common BiDi SFP types,



## UniFi 1G Bidirectional Single-Mode Optical Module

SFP transceiver that supports 1G connections up to 3 km using single-mode fiber with a simplex LC UPC connector.

## Basics of Fiber Optics

Amphenol Fiber Systems International (AFSI), a division of Amphenol, provides reliable and innovative fiber optic interconnect solutions that withstand the harsh environments of military (ground systems,



### **1.6T Transceivers Explained: Advantages, Types & FS**

Explore the evolution of 1.6T optical transceivers, including their working principles, key technologies, module types, and deployment scenarios,



### **Fiber Optic Converters: A Beginner's Guide**

A technical guide explaining the various types of fiber optic converters available today, including their signal type, mounting options, and powering.



### **mpo 16: 2026 Procurement Guide**

Evaluate mpo 16 connectors for 800G and 1.6T data center deployments. Analyze Base-16 architecture, insertion loss budgets, offset keying, and deployment risks.





## Single Mode vs Multimode Fiber Cable: Guide to Fiber

Single Mode vs Multimode Fiber Cable: Compare core size, bandwidth, distance, cost, and best use cases to help you choose the right fiber cable for



## Bidirectional Transmission over a single multimode optical fiber

By replacing one of the light sources with LEDs, cost reduction and higher reliability can be achieved. Since the relationship is as shown on the right, simply replacing the VCSEL with an LED has

## STD-1678-4C

Part 1: Design, installation and maintenance requirements. This part addresses design requirements for platforms that use cable harnesses as the means to transport data through optical



## BRCM\_ Network Connectivity Selection Guide 051821 dd

The portfolio includes 1G, 10G, 25G, 40G, 100G, 200G, and 400G Ethernet transceivers in both short reach multimode fiber (MMF) and medium/long reach single-mode fiber (SMF) configurations as well



## Contact Us

---

For datasheets, pricing, or custom telecom energy solutions, please visit:  
<https://www.koskolong.co.za>