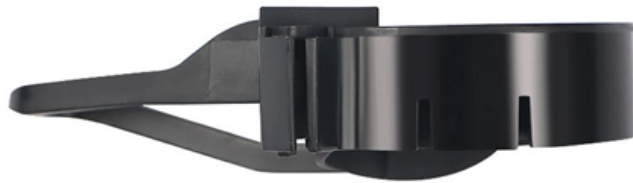




**Adam Tas Corridor Energy**

# **Selection Guide for Low-Noise Fiber Ethernet Switches for Distribution Network Automation**





## Selection Guide for Low-Noise Fiber Ethernet Switches for Distributed

---



### The best network switch of 2025 , TechRadar

The best network switch will be a necessity for anyone looking to add more wired connections and gain greater network speeds.

### Ethernet Fiber Switch: Comprehensive Guide to Networking Power

1.2 Purpose and Functionality The primary purpose of an Ethernet fiber switch is to route and manage data efficiently between networked devices. By using fiber optic technology, these switches enable



### Industrial Ethernet Switches

Industrial Ethernet Switches from AutomationDirect. Your source for industrial unmanaged and managed switches and ethernet accessories.

### Ethernet Switches

AP001 EtherNet/IP Media Planning and Installation Manual, available from Additional resources, such as design guides, white papers, and presentations, are available at Converged



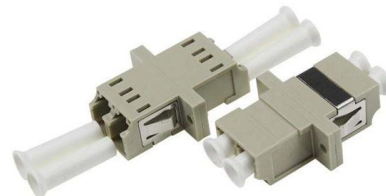
## Industrial Ethernet Switches Selection Guide

No longer just a network accessory, the industrial Ethernet switch has evolved from its origins as a simple factory data acquisition device. Today, these switches serve a continually broadening



## Ethernet Switches

With simple setup and default configurations for EtherNet/IP, the Stratix 6000 line of fixed managed switches is designed to help ease deployment of the Ethernet network on the plant floor.



## home > product > solutions > industrial ethernet switch & fiber switch

FT/FT-T means with 2 Km/Multi-mode/ST Type.  
FCS/FCS-T means with 30 Km/Single-mode/SC Type.  
FCS-60/FCS-60T means with 60 Km/Single-mode/SC Type.



## Industrial Ethernet Switches

Industrial Ethernet switches offer Gigabit transmission speeds, various connection options, and are built to withstand extreme conditions including drastic



## Cisco Switch Selector

Quickly identify the right Cisco switch for your needs, whether you're looking for a new switch or upgrading an old one for an enterprise LAN, a data center,

## Understanding SFP Switches: The Essential Guide to Fiber and Ethernet

Discover the essentials of SFP switches, comparing SFP and RJ45 ports, their roles in Ethernet connectivity, and the latest SFP specification updates.



Motor protection controller



## Stratix 2000 Industrial Unmanaged Switches

Rockwell Automation unmanaged switches offer a compact, solution for small applications requiring reliable network connectivity. With the Allen-Bradley® Stratix 2000 line of unmanaged switches, you



## **SEIEctinG an EthErnEt Switch for your nExt projEct**

B+B Ethernet managed switches network-enable substation control devices so that the technician can remotely assess and manage the situation and determine if a site visit is necessary.



## **Business Insider**

Business Insider tells the global tech, finance, stock market, media, economy, lifestyle, real estate, AI and innovative stories you want to know.

## **Stratix Industrial Networks Infrastructure At-A-Glance Selection Guide**

Smartports provide a set of configurations to optimize port settings for common devices like automation devices, switches, routers, PCs and wireless devices. Smartports can also be customized for specific



## **Fiber Switches**

Ethernet Switches with fiber uplink ports or all fiber switches, commercial grade, managed and unmanaged and PoE enabled are all available in this section.



## Industrial Ethernet Switches , Phoenix Contact

Our Industrial Ethernet Switch portfolio comprises Managed and Unmanaged Switches with Gigabit, PoE, IEC 61850 certification, and for DIN rail mounting.



## Deploying a Fiber Optic Physical Infrastructure within a Converged

This application guide helps designers and installers select and deploy fiber optic media in plant environments. It details fiber optic network infrastructure solutions that provide high-performance

## CENTERLINE 2500 Low Voltage Motor Control Centers and

For more information on how to configure MCCs with EtherNet/IP, refer to CENTERLINE 2500 motor control centers with EtherNet/IP Network, publication 2500-TD003.



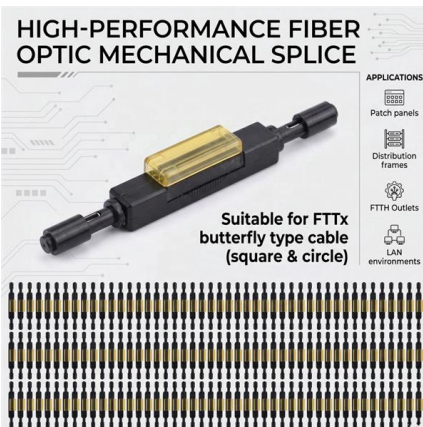


## Unlocking the Power of Fiber Switches: A Comprehensive Guide to

Jason Reeves Fiber switches play an essential role in the architecture of the latest virtual data networks, providing high capacities, better network operability, and excellent dependability. With

## VIAVI Solutions , Network Test, Monitoring, and Assurance

Our test, monitoring, assurance, and resilient position, navigation and timing solutions enable and secure critical infrastructure ranging from data center



## media.digikey

Hier sollte eine Beschreibung angezeigt werden, diese Seite lässt dies jedoch nicht zu.

## Industrial Ethernet Switch Selection Guide

Learn how to choose an industrial Ethernet switch for automation systems, Profinet networks, and reliable industrial PCBA deployment.



## Stratix Industrial Networks Infrastructure At-A-Glance Selection Guide

REP (Resilient Ethernet Protocol) A ring protocol that allows switches to be connected in a ring, ring segment or nested ring segments. REP provides network resiliency across switches with a rapid



## Ultimate Guide to Choosing the Best Fiber Ethernet Switch for Global

So, if you're picking out a fiber Ethernet switch for your network, there are a few key things you should really think about to make sure it works well and stays reliable.



## Fiber Ethernet Network Switches

A fiber optic network switch is a hardware device used to direct network data traffic through fiber optic cables. As opposed to traditional copper





## Fiber Ethernet Network Switches

Discover high-performance Ethernet network switches for seamless connectivity and efficient data transfer. Explore managed & unmanaged switches for your networking needs!



## Managed Industrial Ethernet Switches

Switches are active network components that support the structuring of an industrial communication network into electrical or optical line, star and ring structures.

## WORLD WIDE WEB JOURNAL Home

O'Reilly & Associates, Inc. 103A Morris St.  
Sebastopol, CA United States



## How to Choose the Right Ethernet Switch

The switches you select here are often called workgroup or distribution layer switches. Look for switches with "layer 3" or "router" functionality, as these features are needed to break your network into



## Contact Us

---

For datasheets, pricing, or custom telecom energy solutions, please visit:  
<https://www.koskolong.co.za>