



Adam Tas Corridor Energy

Selection of Cable Tray Screws





Selection of Cable Tray Screws

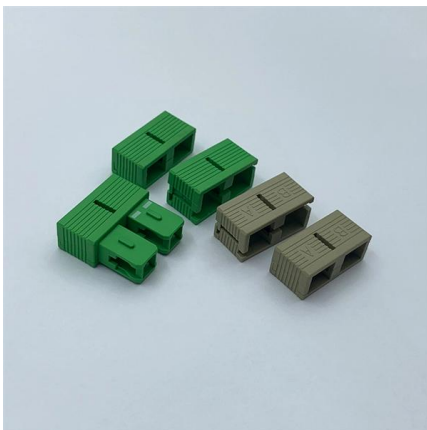


Cable Trays Selection Guide: Types, Features,

Cable trays are components of support systems for power and communications cables and wires. A cable tray system supports and protects both power and

A Guide to Selecting Cable Trays for Engineering Design

Learn about the essential factors when selecting cable trays for engineering design. Understand load calculations, safety factors, material choice,



How to Choose Cable Tray Accessories , West Port Cable Trays

Learn how to select the right cable tray accessories for safe, durable cable management. This guide covers materials, installation practices, and compliance with safety standards.

Best Fixing and Mounting Options for Cable Trays , CMW

Regarding cable management, the fixing and mounting you choose for your cable trays can



make or break your setup. Whether you're managing voice, data, or electrical cables, ensuring



GUIDE CABLE TRAYS TECHNICAL

NEMA VE 1-2017 Specifies requirements for metal cable trays and associated fittings designed for use in accordance with the rules of Canadian Electrical Code, Part I and the National Electrical Code®

Mounting instructions

The screw-on cable tray systems are used to support and route all kinds of cables, taking the approved load values into account. Depending on the corrosion protection used, they can be mounted both



Mastering Cable Tray Installation , Step-by-Step Guide for a Seamless

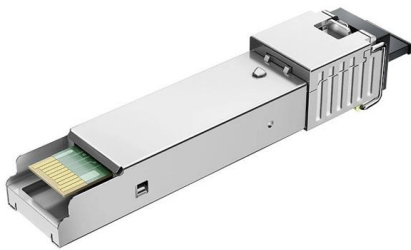
Learn how to install cable trays correctly. Get the ultimate step-by-step guide on setting up a seamless and reliable cable management system.





Cable Tray Systems: Requirements and Best Practices

Comprehensive guide to cable tray systems requirements: tray types, materials, loading, supports, bonding, routing, and best practices for safe electrical cable management.



Mounting instructions

5.1 System description The screw-on cable trays for routing cables are designed for high support loads. The widths vary from 100 to 600 mm and the side heights from 35 to 110 mm. The cable trays are

OBO cable trays

The versatile OBO cable tray systems stand for efficiency, stability and safety. This applies to the screw-on variants as well as the cable trays with the innovative



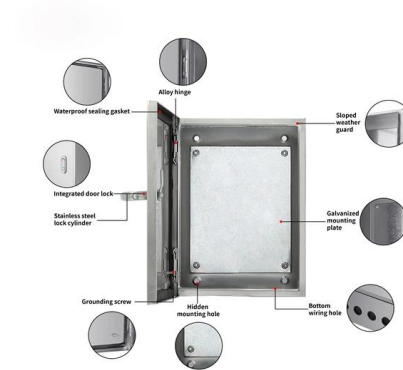
Ultimate Guide to Cable Tray Selection - Types,

Learn how to choose the best cable tray system for your needs. Explore types, materials, installation tips, and NEC compliance in this expert guide.



Tray Bolts & Nuts

Specifically designed to provide a rapid and secure fixing when erecting cable trays. The fixed washer to the flange nut prevents it from falling into the socket driver. In



89P

36P

16P

Cable Tray Technical Guide A practical guide to product selection and

Cable tray length is selected based on the load to be supported, the distance between the supports (also referred to as the span), and handling and installation constraints.

Screw-on cable trays , OBO

Screw-on cable tray systems The screw-on cable tray systems from OBO have been used for decades by planners and specialists around the world in the field of





Cable Tray Installation Guidelines , PDF , Galvanization

This document provides details on installing cable trays and their support systems. It includes diagrams showing how to mount cable trays on walls using pre

Cable Tray Selection Process

The selection requires a compromise with the considerations being available space, minimum bending radius of cables, ease of cable pulling, and cost. The typical radius is 24 in. Fittings are also available



CABLE TRAY SYSTEMS GUIDE

The design and cost of the cable tray is greatly affected by this designation. In order to determine the most appropriate and economical system, a class should be selected that reflects the actual total

Mounting instructions

The mounting drawings of the screw-on cable tray systems show either perforated or unperforated cable trays. All the connectors, fittings and accessories shown can be mounted on both perforated and



Cable Tray Manufacturers

1. When the cable network that needs to be shielded from electrical interference or protection from external influences (such as corrosive liquids, flammable dust, etc.) is required, the (FB) type trough



All Types of Cable Tray Screws for Connections

Common cable tray accessories include cable ties, cable clips, cable ladders, and cable management kits. They are available in different materials, such as metal,



Fittings, cable trays, screw connection , OBO

Fittings, cable trays, screw connection Horizontal bends, screw connection Vertical bends, screw connection Add-on tees, screw connection Corner extension pieces, screw connection 90°





Expert Guide: Selecting Screws & Fixings for Reliable Cable

Discover the essential tips for choosing the right screws and fixings for efficient cable management in the UK. Learn about materials, regulations, and installation techniques to ensure



Anti-corrosive Cable Trays Selection: A Comprehensive

Learn how to choose the best anti-corrosive cable trays for your electrical system. Discover the ideal materials for mild, moderate, and severe

Cable Tray Technical Guide A practical guide to product selection and

A practical guide to product selection and installation This guide for engineers and installers has been developed by ABB as a practical reference regarding cable tray characteristics, installation, and



Best Practice Guide to Cable Ladder and Cable Tray Systems

This guide covers cable ladder systems, cable tray systems, channel support systems and associated supports intended for the support and accommodation of cables and possibly other electrical



BZP Cable Tray Bolts and Serrated Flange Nuts

These tray bolts and serrated flange nuts are specially designed for the rapid installation of cable tray and give a superior fixing than traditional roofing bolts.



WebiTelecomms Cabling

Contact Us

For datasheets, pricing, or custom telecom energy solutions, please visit:
<https://www.koskolong.co.za>