



**Adam Tas Corridor Energy**

# **Selection of Cable Trays and Angle Steel Brackets**





## Selection of Cable Trays and Angle Steel Brackets

---



### Types of Cable Trays - Advantages, Applications and Sizes

Explore the types of cable trays, their advantages, applications, and standard sizes. Learn how they improve cable management and support various industries.

### 100+ Essential Questions Answered About Cable Trays:

Discover over 100 expert answers about cable trays, covering key topics like material selection, load capacity, installation methods, and maintenance.



OM3 Fiber Patch Cable Family



### Cablofil CEQ100 Hot Dip Galvanised Steel Wire Cable Tray Central

Hot dip galvanised central hanger bracket for wall mounted support of 50 mm wire cable trays. Fixed 90° configuration provides stable installation with corrosion resistance in industrial environments.

### Best Practice Guide to Cable Ladder and Cable Tray Systems

Trapeze hangers (Figures 9) are suitable for use with cable ladder and cable tray, supported by



threaded rods hung from ceiling brackets, channel support systems or from beam clamps attached to



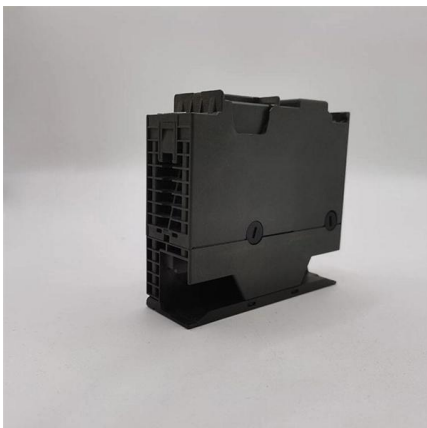
## Cable Tray Technical Guide A practical guide to product selection and

A practical guide to product selection and installation This guide for engineers and installers has been developed by ABB as a practical reference regarding cable tray characteristics, installation, and



## How to Calculate the Cable Tray Support Quantity

Learn how to accurately calculate cable tray support quantities in electrical installation projects. Our guide covers methods, tools, and practical



## Cable Tray Mounting Brackets , McMaster-Carr

Choose from our selection of cable tray mounting brackets in a wide range of styles and sizes. Same and Next Day Delivery.



## The Comprehensive Guide to Cable Tray Systems:

Master cable tray systems with our expert guide covering structural engineering, material selection, and NEC compliance to ensure safe, efficient,



## CABLE

Angle brackets may also be used for wall fixing from which screwed rods may be suspended to support cable basket, tray or ladder. Steel beams may be used for substation cabling.

## Guide to cable support systems

The systems are suspended from the ceiling with threaded rods, stand-of brackets allow raised floor mounting of cable trays, ladders and mesh cable trays. The universal systems comprise ceiling



## GUIDE CABLE TRAYS TECHNICAL

Specifies requirements for metal cable trays and associated fittings designed for use in accordance with the rules of Canadian Electrical Code, Part I and the National Electrical Code®



## GUIDE CABLE TRAYS TECHNICAL

In accordance with its continuous improvement policy, Legrand reserves the right to change the specifications and illustrations without notice. All illustrations, descriptions and technical information



## Resources for Cable tray and ladder systems

Submittals for cable ladder and tray Eaton's submittal builder tool for B-Line series cable ladder and tray allows you to easily filter, select and download straight

## Cable Tray Technical Guide A practical guide to product selection and

Cable tray length is selected based on the load to be supported, the distance between the supports (also referred to as the span), and handling and installation constraints.





## Ultimate Guide to Cable Tray Selection - Types,

Selecting the right cable tray is essential for safety, efficiency, and compliance with industry standards. This guide will help you choose the best

### Cable trays

We offer a wide range of cable tray systems to support tubing, electrical cables and instrumentation. Our cable trays are produced in fit for purpose materials like



### Cablofil CU200GC Hot Dip Galvanised Steel 200mm Cantilever Bracket

Cantilever bracket for wall mounted support of 100 to 200 mm cable trays. Fixed 90° mounting supports stable routing. Hot dip galvanised steel provides corrosion resistance with 900 N safe working load to

### Strut Channel Manufacturer in UK Sensible Prices

Cantilever Arms, Angle Brackets, Beam Clamps, Channel Nuts & Fixings manufactured from high-quality galvanised steel, ideal for supporting cable trays,



### Enclosure Cable Management , Wire Mesh Tray

Well-organized cable layouts also simplify installation, troubleshooting, and ongoing maintenance. RSP Supply offers a comprehensive range of enclosure cable



### CABLE TRAY SYSTEMS GUIDE

Steel Ladder System Hubbell's NEXTFRAME® Ladder Tray is the effective and widely used cable runway that supports and delivers bundles of cable between cabinets, racks, and closets, along



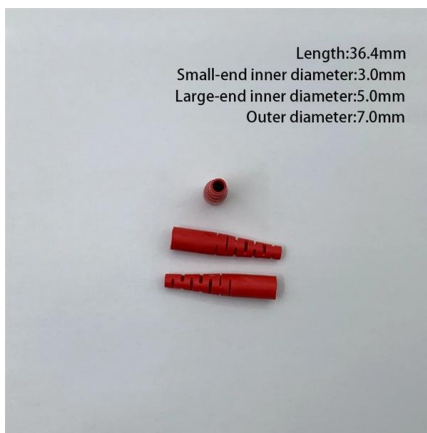
### Best Practice Guide to Cable Ladder and Cable Tray Systems

This guide covers cable ladder systems, cable tray systems, channel support systems and associated supports intended for the support and accommodation of cables and possibly other electrical



## Cable Trays and Accesories

SFSP manufactures a wide range of products capable of providing the characteristics which respond to the proposed application, along with quality of assembly, speed



## Types of Cable Trays: Ladder, Perforated, Basket, Solid

Explore all types of cable trays--ladder, perforated, basket, solid, and channel. Learn their uses, materials, pros, cons, and key differences.

## Ultimate Guide to Cable Tray Selection - Types,

Learn how to choose the best cable tray system for your needs. Explore types, materials, installation tips, and NEC compliance in this expert guide.



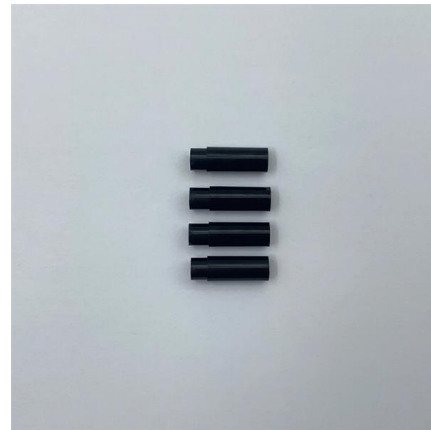
## Best Practice Guide to Cable Ladder and Cable Tray Systems

This publication is intended as a practical guide for the proper and safe\* installation of cable ladder systems, cable tray systems, channel support systems and associated supports.



## CABLE TRAY SYSTEMS GUIDE

In order to determine the most appropriate and economical system, a class should be selected that reflects the actual total working load and support span for each application. Some applications may



## Cable Tray Support: Rod vs. Angle Steel

Learn about the different types of cable tray support, including rod supports and angle steel supports, and how to choose the right one for your

## 7 Types of Cable Trays: How to Choose the Right One

Selecting the correct cable tray type is not arbitrary--it depends on a combination of cable characteristics, environmental conditions, and installation



