



Adam Tas Corridor Energy

Selection of Dedicated Optical Communication Bit Error Meters for Rail Transit





Selection of Dedicated Optical Communication Bit Error Meters for F

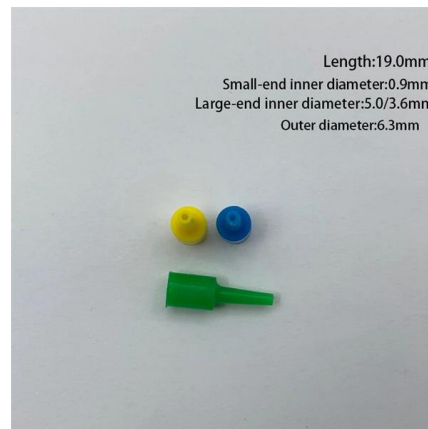


Accurate calculation of eye diagrams and bit error rates in optical

We present a novel linearization method to calculate accurate eye diagrams and bit error rates (BERs) for arbitrary optical transmission systems and apply it to a dispersion-managed soliton (DMS) system.

Bit Error Rate (BER) in Optical Links: Causes and Mitigation

As optical links are increasingly used for high-speed data transfer, understanding and managing BER becomes essential to ensure reliable communication. Causes of Bit Errors in Optical



Accurate calculation of bit error ratios in optical fiber

We describe recently developed theoretical methods that allow users to accurately calculate bit error ratios (BERs) in realistic optical fiber communications systems.



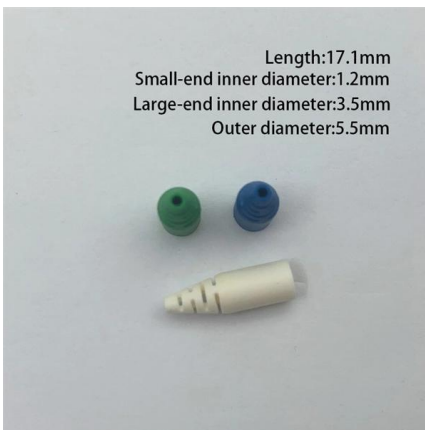
Measurement of bit error rate of an optical OFDM system using

In this paper, the maximum Q Factor, Min Bit Error Rate and Bit rate Pattern of an Optical



Communication System with various Optical Fibre Cable lengths are discussed.

MTP MPO SC-Type Fiber Adapter



What Is BER (Bit Error Rate) Testing? Ensuring Optical Signal Integrity

As data transmission over optical fibers becomes increasingly prevalent, maintaining high signal quality is crucial for seamless communication. BER serves as a quantitative measure of the

BERT 800 800G Bit Error Rate Tester-DIMENSION

Dimension Technology's BERT800 bit error tester series offers a comprehensive solution for testing and verifying high-speed optical transceiver modules. These versatile devices can be used in various



Wireless channel estimation for high-speed rail communications

With the development of High-Speed Rail (HSR), countries and individual passengers alike have enjoyed far ranging benefits as a result - economic, social, environment and in added



The Tradeoff Between Bit Error Rate and Optical Link

Orthogonal frequency division multiplexing (OFDM) is a suitable solution thanks to its many advantages known in wireless communications. On the other hand, optical communications is



HFTA-010.0: Physical Layer Performance: Testing the Bit Error Ratio

The ultimate function of the physical layer in any digital communication system is to transport bits of data through a medium (such as copper cable, optical fiber, or free space) as quickly and accurately as

Bit-Error-Rate Testers - Optellent

The OPTELLENT OptoBERT(TM) OPBX110 is a cost-effective easy-to-use 10G optical and electrical bit-error-ratio tester (BERT) for testing components and systems in R& D and manufacturing



Optical Measurement System for Monitoring Railway

This article briefly explains the different optical measurement principles employed and provides an overview of a selection of the optical



What is Bit Error Rate: BER tutorial

For fibre optic systems, bit errors mainly result from imperfections in the components used to make the link. These include the optical driver, receiver, connectors and



Bit Error Rate (BER) Test and Measurement Using BER Meter

The FPGA counts the number of errors and calculates the BER internally. Conclusion Overall, BER testing using a BER meter in a test setup is a fundamental technique for evaluating the quality and

Analysis of bit error rate and receiver sensitivity of a

A comparison of BER performance indicates that DC biased optical OFDM with intensity modulation direct detection (DCO-DD-OFDM) offers better receiver sensitivity compared to optical OFDM without



FIBER OPTICAL SENSORS FOR HIGH-SPEED RAIL APPLICATIONS

Laboratory experiments performed at the University of Illinois at Urbana-Champaign (UIUC) and field testing at the Transportation Technology Center (TTC) in Pueblo, Colorado have demonstrated that



LU502906B1

The present invention relates to the technical field of rail transit, disclosed are a method for testing a burst bit error of a locomotive network communication system and a bit error



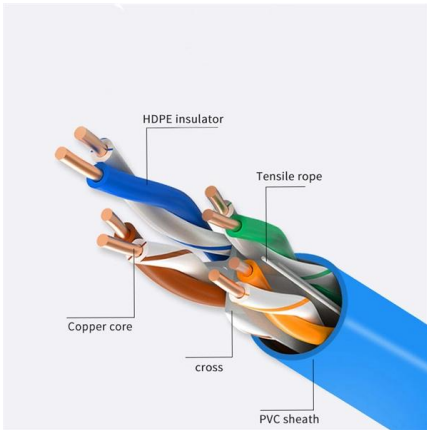
Optical System margin & bit error rate , Kingfisher International

Insert the adjustable VOA into the system, and gradually change the attenuation until the Bit Error Rate (signal quality) is marginal. The extra attenuation introduced by the VOA at the point of marginal

Improvement of Bit Error Rate in Fiber Optic Communications

I. INTRODUCTION Optical fibers are widely used in fiber optic communications which permits transmission over longer distances and at higher bandwidths than other forms of communication.



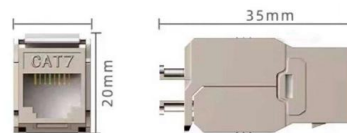


A review of railway infrastructure monitoring using fiber optic sensors

This article reviews the current state-of-the-art of fiber optic sensing/monitoring technologies, including the basic principles of various optical fiber sensors, novel sensing and

Bit Error Tester

Each product in our wide range of fiber technologies, detectors, laser diodes, laser



Semight-optical communication-Bit Error Ratio Tester-Semight

Bit Error Ratio Tester is an instrument used to test and analyze bit error ratio in digital transmission systems, fiber optic communication systems, and digital microwave communication systems.

Bit Error Rate Optimization in Fiber Optic Communications

I. INTRODUCTION Optical fibers are widely used in fiber optic communications which permits transmission over longer distances and at higher bandwidths than other forms of communication.



Bit Error Rate: Fundamental Concepts and Measurement Issues

A lower bit rate increases the energy per bit, but we lose capacity. Ultimately, optimizing E_b/N_0 is a balancing act among these factors. BER Measurement While the basic concept of BER measurement

Bit-error rate investigation of satellite-to-ground downlink optical

Free-space optical (FSO) communication can be used for applications requiring high capacity, enhanced security, low cost, and unlicensed broad bandwidths. As an important portion of



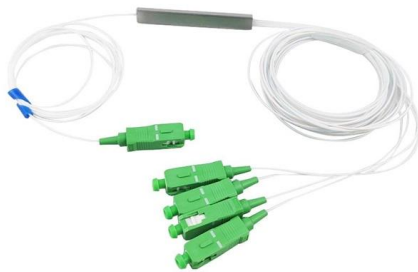
CMU School of Computer Science

ä ,EURäº> bits ä³/4¿â®oe bits è<| bitter è<|ç"oe bitter è³/4>é , bitterness æ^~ä¹± bitterness é»' black é»'è²² black å oeç"µ blackouts å²ºç?² blackouts é»'äºº blacks ä , blacks æOE? blades çoe<å²? blades



Bit Error Rate (BER) Test and Measurement Using BER Meter

Explore bit error rate (BER) testing using a BER meter, including setup and alternative methods like XOR and FPGA, for digital communication systems.



The Role of Bit Error Rate in Modern Optical Networks

Explore the significance of Bit Error Rate (BER) in modern optical networks and its impact on network performance, reliability, and overall quality of service.

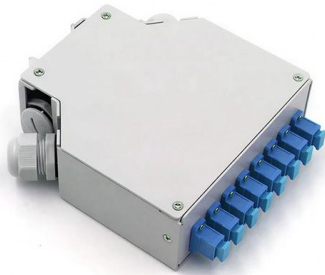
cci-dg.book

Due to the mission critical nature of CBTC operation and regional compliance requirements, rail operators mostly deploy CBTC within a dedicated Data Communication Systems (DCS) whose sole



Implementing Passenger Information, Entertainment, and Security

Importance of Communication Infrastructure The communication infrastructure within public transit vehicles and between vehicles and the wayside is the pillar of the passenger information and security



Design and testing of a bit error rate tester with application to a

This paper is concerned with the development of a bit error rate (BER) tester with application to a visible light communication (VLC) system. The hardware and experimental



Contact Us

For datasheets, pricing, or custom telecom energy solutions, please visit:
<https://www.koskolong.co.za>