



Adam Tas Corridor Energy

Selection of Remote Control Switch Distribution Box



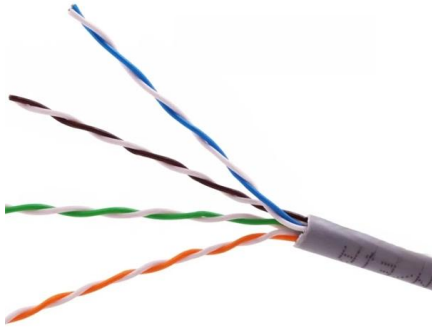


Overview

The application of long-term load forecasting (LTLF) in solving the problem of optimal placement of remote-controlled switches (RCSs) in distribution networks is considered in this paper.



Selection of Remote Control Switch Distribution Box



Distribution Box and Selection Guide

Distribution Box Selection Guide This guide provides information on how to select the appropriate Distribution Box for Electric project. If you have any

Optimal procedure for remote-controlled switch devices siting in

Remote control switches are optimally allocated to improve reliability at a compromised cost. Alabdullah et al. investigated the effect of number and location of the sectionalising switch in



Optimal Placement of Remote-Controlled Switches in Distribution

USA Correspondence: isapour@siu Received: 4 February 2019; Accepted: 11 March 2019; Published: 15 March 2019 Abstract: A two-level optimization method is presented to find the optimal

How to choose a distribution box?

When choosing a distribution box, multiple aspects need to be considered to ensure that the selected equipment can meet specific needs and



ensure the reliability, safety and efficiency of the power system.



Optimal procedure for remote-controlled switch devices siting in

Since the investment in remote-controlled switch (RCS) devices comes at a cost, this study proposes a heuristic approach to solve the problem of optimal siting RCS devices in



Explore Power Distribution Box Types and Functions

To put it bluntly, the distribution box is the control and distribution center of electricity. Distribution boxes vary in shape and structure due to different



MasterThesisReport_TW_v3

Abstract Remote controlled switches (RCS) are used to enhance the recovering process of distribution grids. Commonly installed on MV-lines to sectionize feeders, they are a cheap and efficient way to



Optimal deployment of remote-controlled switches in distribution

Abstract Remote-controlled switch (RCS) placement problem is used to optimally deploy the switches in distribution networks to enhance system reliability. The candidate locations of RCSs



Distribution Box: Key Functions, Components, and

Learn everything about the Distribution Box, its key components, and how to choose the right one. Explore our quality products and upgrade your

Guidelines to Implement Monitoring and Remote Control System in an

This thesis aims to give guidelines for implementing monitoring and remote control equipment in an urban distribution grid. The structure of a distribution grid, the system grounding, and the basic



Optimal allocation of remote controlled switches in radial distribution

There is an increasing interest in the analysis of power distribution systems, including demands to improve the distribution networks reliability. Regulatory agencies define reliability indices to quantify



Optimal Deployment of Remote Controlled Switches in

Remote-controlled switch (RCS) placement problem is used to optimally deploy the switches in distribution networks to enhance system

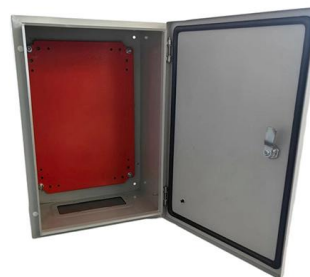


Smart control cabinets Solutions for automating the secondary

Wireless connectivity for easy and secure access to remote communications assets it comes to transferring real-time data and managing remote communications assets. Easy integration of

Optimal Placement of Remote-Controlled Switches in Distribution

Abstract: A two-level optimization method is presented to find the optimal number and location of conventional protective devices to be upgraded to remote-controlled switches (RCSs) for an existing





RCA Switch Box 4 in 3 Out: 4 Way AV Splitter 3 Output



?Manual Switch & Remote Control?Koopman RCA switcher 4 input 3 output with sturdy metal casing, anti-skid feet ensuring rapid heat dissipation for protection

Optimal deployment of remote-controlled switches in distribution

Remote-controlled switch (RCS) placement problem is used to optimally deploy the switches in distribution networks to enhance system reliability. The candidate locations of RCSs are

Pre-Terminated Patch Panel

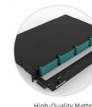
Standard 19" width Max 144 fibers in 1U MPO/Fusion Dual-Purpose



Removable Cable Management Tray



Transparent Front Cover



High-Quality Matte Coated Steel

(PDF) Construction of an Automatic Distribution Box and Change

The construction of this multi-channel remote control system can control the 4 different phases of the distribution box. This device was achieved by the use of integrated circuits that has



Intelligent Remote Distribution Box Monitoring Solution

Remote distribution box monitoring By leveraging the intelligent remote monitoring function, you can collect the electric meter readings and implement networked



The Complete Guide to Distribution Box: Installation, Types & More

The main switch, or main breaker, controls the entire electrical supply to the distribution box. This large switch allows you to disconnect all power to the building during emergencies or



Correct Selection Of Main Switch Of Distribution Box

As the main switch is separated from the whole distribution box, it can also be used as the power supply terminal (including bus bar) for the protection function of



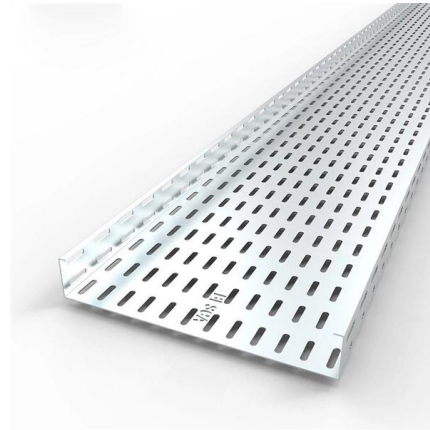
Remote Control Switch Deployment to Improve Power Distribution

Power distribution systems are of great importance because of closeness to the end-users. Therefore, power distribution systems need an acceptable level of reliability and resiliency because of their main



How to Choose a House Distribution Box , CHINT global

A well-chosen distribution box ensures the safety and efficiency of your household electrical system. This article guides you through selecting a



MILP-Based Allocation of Remote-Controlled Switches

Optimizing the allocation of RCS, particularly under reliability constraints, is of great importance for improving both the reliability and the level of



Understanding Distribution Boxes: A Comprehensive Guide

A distribution box, also known as a power distribution box or electrical distribution box, is used to distribute electrical power safely to multiple



Optimal deployment of remote-controlled switches in distribution

Abstract Remote-controlled switch (RCS) placement problem is used to optimally deploy the switches in distribution networks to enhance system reliability. The candidate locations of RCSs



How to classify power distribution cabinet and power

They distribute the electric energy of a certain circuit of the upper level distribution equipment to the nearby load. This level of equipment shall provide protection,

Optimal Placement of Remote Controlled Switches in Electric Power

In the present work the problem of Optimal Placement of remote controlled switches, through the replacement of installed manual switches, in Electric Power Distribution Systems with



Optimal Placement of Remote Controlled Switches in Electric Power

Abstract: In the present work the problem of Optimal Placement of remote controlled switches, through the replacement of installed manual switches, in Electric Power Distribution



Contact Us

For datasheets, pricing, or custom telecom energy solutions, please visit:
<https://www.koskolong.co.za>