



Adam Tas Corridor Energy

Server Room Cold Aisle IP65



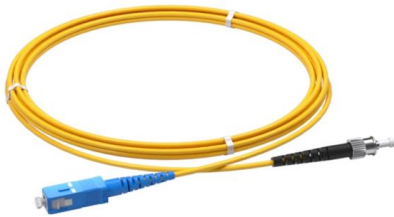


Overview

The hot and cold aisles in the data center are part of an energy-efficient layout for server racks and other computing equipment.



Server Room Cold Aisle IP65

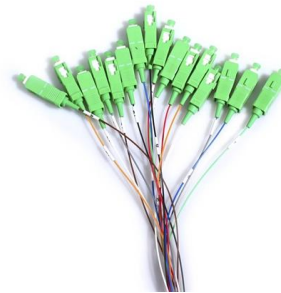


Optimizing Data Center Cooling: The Power Of Hot And

Discover how to optimize your data center cooling system with hot and cold aisle containment. Learn about the assessment, design, installation, and

Data Center Cold Aisle Containment Curtains

Steel Guard cold aisle containment curtains handle high thermal loads of up to 10-15kW with a raised floor setup, delivering exceptional temperature regulation



Cold Aisle Containment in Data Centers , Subzero

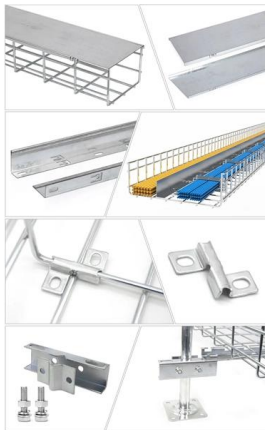
Minimize your data center's footprint, establish optimal operating efficiencies and save money with cold aisle containment. Learn more here!

Containment Strategies in High Density Data Centers

Last week we continued our article series on the challenges of keeping IT equipment cool in high



density environments. This week, we outline some



Hot and Cold Aisle Containment: What You Need to

Aisle containment is a physical means of separating hot (exhaust) and cold (supply) air. It can be accomplished via thoughtful room design, cabinet

Data Center Hot Aisle/Cold Aisle Layout Design

Are you interested in creating the most energy efficient design for your Data Center Server Room? Consider the Hot Aisle/Cold Aisle layout design.



Aisle Containment for Server Rooms and Data Centers

Aisle Containment Enhance cooling efficiency and reduce energy costs with aisle containment solutions from Server Racks Online. Designed for data centers and IT environments, our hot aisle and cold





Cold Aisle Containment

By enclosing the cold aisle or hot aisle, the efficiency of the cooling in the data center is significantly increased and the energy expenditure is considerably reduced.



Hot Aisle / Cold Aisle Cooling Explained

The hot aisle / cold aisle configuration conserves energy and lowers cooling costs by managing air flow. This is common practice in every data centre and may seem obvious to most

Data Centre Cooling: Hot Aisle and Cold Aisle Design

Data Centre Cooling: Hot Aisle and Cold Aisle Design Data centres have become an integral part of today's technological landscape, used to store, process and



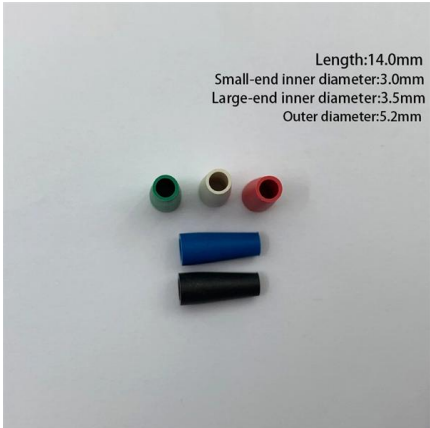
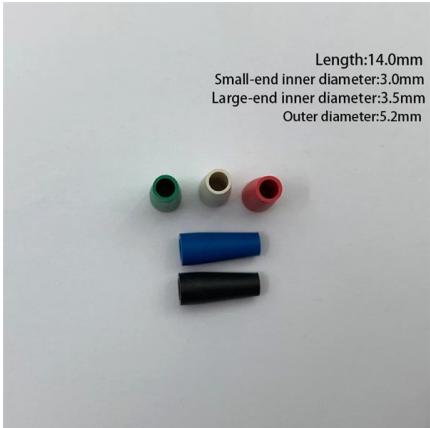
The Advantages And Disadvantages Of Hot-Aisle, Cold

But there are some disadvantages to cold-aisle containment. Allowing the discharge air from the hot aisle to fill the room results in temperatures



Hot Cold Aisle Containment

The goal of a hot aisle/cold aisle containment configuration is to conserve energy and lower cooling costs by managing air flow. Hot aisle/cold aisle containment



Data Center Design: Hot Aisle & Cold Aisle - Length

Efficient airflow management in data centers relies heavily on proper Hot Aisle and Cold Aisle configurations. To maintain thermal performance, equipment

Approaches to Data Center Containment

The issue with hot aisle/cold aisle designs is that the air is free to move wherever it will. In a cold aisle containment approach, the data center installs end of row



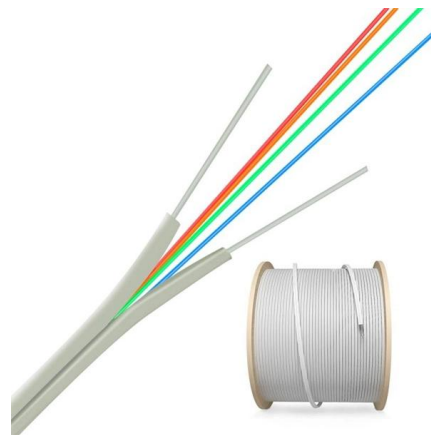


Hot/Cold Aisle Containment , AZE

Cool Shield Aisle containment solutions reduces server row temperatures in active data centers. Contact us info@azesystems to build your data center with our

Cold Aisle Containment , Legrand

By maintaining consistent, predictable temperatures, cold aisle containment minimizes thermal stress and reduces the risk of overheating, improving reliability and extending equipment lifespans.



Hot Aisle vs Cold Aisle Containment Explained (Data Center Cooling

Hot aisle and cold aisle containment are foundational concepts in data center design. When implemented correctly, they improve efficiency, reduce energy consumption, extend

Data Center Curtains

Data center server room curtains and strip doors are a great solution for hot and cold aisle containment for maintaining proper server temperatures.



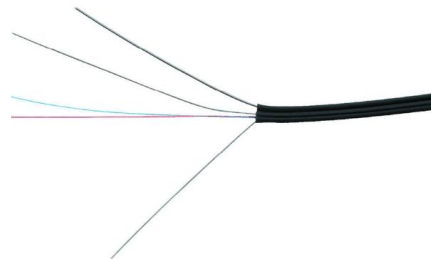
Move to a Hot Aisle/Cold Aisle Layout

A Time-tested Technique The hot aisle /cold aisle data center layout was originated by IBM in 1992 and it is one of the oldest ways to save energy in the data center.



Server Room Containment Systems , Hot & Cold Dial Containment in

Hot and cold aisle containment is a proven strategy to optimize airflow, reduce energy costs, and improve cooling efficiency. At Profile IT Solutions, we specialize in designing and implementing



How to Keep Your Server Room Cool

How to Keep Your Server Room Cool With the advent of cloud computing and the advancement of technology, the number of servers and data



Data Center Hot/Cold Aisle Containment Systems , Eaton

An aisle containment system is a simple way to improve cooling efficiency in hot aisle/cold aisle rack configurations. Essentially creating a room within the aisle,



Data Center Hot/Cold Aisle Containment Systems , Eaton

Keep your server rack aisles cool to prolong network equipment life and data center efficiency. Full scale aisle containment solutions. Modular kits for every edge-of

Cold Aisle Containment

Modular designed frame made of cold roll steel, with thickness $\geq 1.2\text{mm}$ to ensure the firmness and security. Each modular unit has proper space for cable



Contact Us

For datasheets, pricing, or custom telecom energy solutions, please visit:
<https://www.koskolong.co.za>