



Adam Tas Corridor Energy

Should the power distribution box for the suspended platform be mounted internally or externally





Should the power distribution box for the suspended platform be m

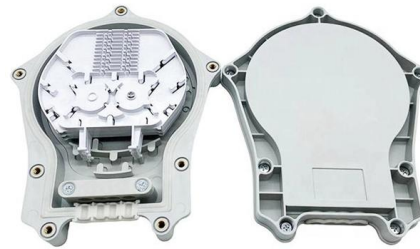


Power Distribution Equipment

Devices mounted in the switchboard may be either panel mounted (also referred to as group mounted), where they are mounted on a common base or mounting surface, or individually mounted, where

The Financial Express , First Financial Daily of Bangladesh

Get latest stock share market news, financial news, economy news, politics news, breaking news, Bangladesh economy news at The Financial Express.



What is a Suspended Platform? The Ultimate Guide

A suspended platform is a safe, flexible work system for high-rise projects. Compare types, uses, and benefits to choose the best suspended



STD 2.13 Hand Tools

Hoisting personnel with crane suspended personnel platforms constitutes a significant hazard to hoisted employees and must not be

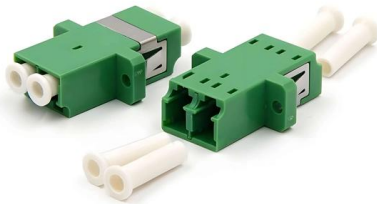


permitted unless conventional means of transporting employees are not



Safety Guidelines for Suspended Platforms

The power cable is connected between the power supply and electrical box; it is actually the conductor to transmit the electric energy to the suspension platform.



The installation requirements for the distribution box

A distribution box is the heart of any electrical system. It takes the incoming power and safely distributes it to different circuits throughout your



What Is A Suspended Platform Control Box? Complete Guide To

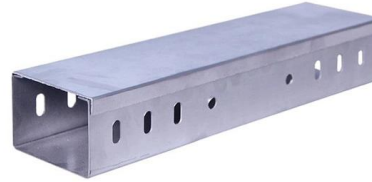
This article will detailedly explain the functions, installation key points, and usage specifications of the suspended platform control box to help you fully understand this critical component.





Integrated vs. Externally Mounted Surge Protective

Integrated surge protective devices (SPDs) create limitations when sourcing parts or replacements that non-integrated SPDs do not. Integrated SPDs can damage the



eTool : Scaffolding

Scaffolding » Suspended Scaffolds Suspended scaffolds are platforms suspended by ropes, or other non-rigid means, from an overhead structure. Because two-point scaffolds are the most common

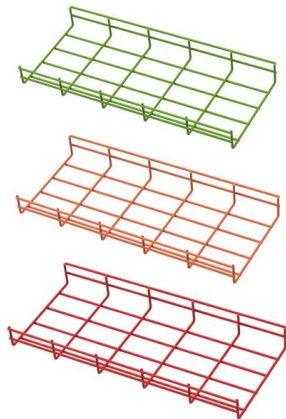
Safety Guidelines for Suspended Platforms

The document provides safety rules and guidelines for using suspended access equipment for construction. It outlines environmental safety considerations,



Code of Practice on the Design and Construction of Tower Working

The tower working platform, including any lifting equipment on the platform, is tested and examined by registered examiners before use. The construction and design of any lifting equipment erected on the



MNS® Low Voltage Distribution Board and Power Cabinet

For wall mounted, the flange is located on the external side of the enclosure, and there is a wall mounted slot on the back of the enclosure. For wall embedded, the flange is located on the internal side of the

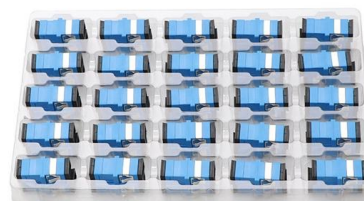


Engels MHB USA 01-12-2010

Stop using the suspended platform system immediately if any of the system components do not operate properly or if any of the system components are damaged - call your supervisor for help. Only use

ZLP-Series

If it is necessary to have the suspended platform lowered back onto the ground, operate manual descending device to have the platform lowered smoothly onto the ground.





Assembly Instructions

Assembly and operating instructions for suspended platform system Modular suspended work platform in assembled lengths from 2m to 19m

ANSI/ASSP A10.28-2018: Safety Requirements for Work

ANSI/ASSP A10.28-2018 applies to platforms suspended from the load lines of cranes and derricks in order to do one of two major things. The first is to



Temporary Suspended Platforms

When leaving a suspended platform (in mid-air) first secure the platform to the face of the structure in order to keep it from moving away. Do not forget to disconnect the platform from the structure before

ZLP630/ZLP800 Suspended Platform Electric Control Box

The suspended platform control box is a high-performance



Essential Safety Guidelines for Workers on Suspended

Suspended platforms, when operated correctly according to these guidelines, provide a safe and productive solution for working at heights on



The Benefits of Having a Suspended Power Distribution System

Depending on your application or your plant design, having an overhead power supply source comes in handy. Some facilities don't have columns in the middle of the floor for routing and installation of



Platforms

Platforms - Suspended Work On this page hen working on a suspen What should you not do? What should you do when working on a suspended platform? Make sure that the platform is installed and



Safe Use and Operation of Suspended Working Platform

You help ensure suspended platform safety by following certified procedures, using qualified operators, and conducting regular inspections. With



Complete Guide to Rope Suspended Platform Parts:

Unlike fixed scaffolding, rope suspended platforms offer flexibility and faster setup times, making them a cost-effective solution for contractors.

The Ultimate Guide to Suspended Platforms: Safety, Setup, and

Suspension Mechanism - Mounted on the rooftop or parapet to hold wire ropes securely. Working Platform - The area where workers stand, usually made of aluminum or steel. Hoist Motor - Powers



7 Essential Safety Tips for Using a Suspended Rope

Suspended rope platforms are invaluable tools for working at height, but they demand respect and care. By following these seven essential safety



Transformer mounting types

Transformer mounting types Pole Mounted Transformers Pole-mounted transformers are a common sight in residential electricity distribution.



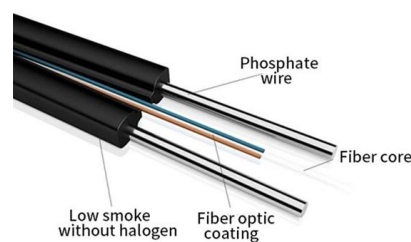
Assembly and operating instructions for suspended platform system

All suspended platform systems must be assembled as detailed in the tables below. This is the way the suspended platform systems were tested and classified by UL.



Management of Safe Operation of Suspended Working

A safe system of work should be established for every operation of a suspended working platform. The system should be prepared and endorsed, with the advice





Safe use and Operation of Suspended Working Platforms

4.2.2.1 A competent person is responsible for the installation and use of the suspended possess adequate knowledge of the his control and has substantial experience erection and dismantling of

How to Safely Operate a Suspended Platform?

While these platforms provide access to hard-to-reach areas, they also come with serious safety responsibilities. This article outlines who is allowed to



Contact Us

For datasheets, pricing, or custom telecom energy solutions, please visit:
<https://www.koskolong.co.za>