



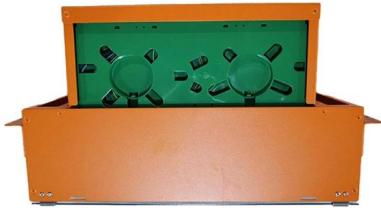
Adam Tas Corridor Energy

Single busbar and double busbar high-voltage switchgear





Single busbar and double busbar high-voltage switchgear



12kV XGN15-12 Metal Clad MV Medium Voltage Switchgear SF6

12kV XGN15-12 Metal Clad MV Medium Voltage Switchgear SF6 630A-1250A/PT Section
Description: 11kV switchgear is the latest generation of indoor complete power distribution equipment with three

What Is a Busbar: Types, Applications, & Simulation

What Is a Busbar? A busbar is a metallic strip or bar commonly found inside switchgear, panel boards, and busway enclosures. It serves a crucial role



Busbar Design Standards for MV Switchgear

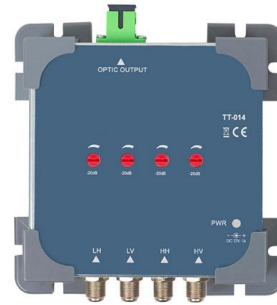
Avoid certification failures and costly redesigns. This guide compares IEC, ANSI, and GB busbar standards with real

What is Electrical Busbar? Types, Advantages,

A busbar is a metallic bar in a switchgear panel used to carry electrical power from incoming



feeders and distributes to outgoing feeders.



Ground Bus Bar: Code-Compliant Selection & Sizing

IEC Context (IEC 61439) IEC 61439 governs low-voltage switchgear and controlgear assemblies. While it's a broad standard covering busbars in

Busbar

In electric power distribution, a busbar (also bus bar) is a metallic strip or bar, typically housed inside switchgear, panel boards, and busway enclosures for



Electrical Substation - Busbar Arrangements and Layouts

In this article, you will learn about the types of electrical busbar arrangements and layout diagrams in substation.





Busbar Arrangements in Power System Substations

Protection Concept for Ring Busbar Scheme A well-designed protection system is the backbone of reliable power system operation--especially in critical substations using a ring bus configuration.



Air-insulated switchgear for power application/Ring Main Unit 12kV 17

Explore air-insulated switchgear for power application. High - reliability, air - insulated design ensures stable power control and protection.

High Voltage Distribution Box

For example, configurations with several internal busbars increase redundancy and power supply flexibility in enterprises with big power requirements while remaining simple for smaller applications.



Busbar Design for LV Panels: What Most Engineers Get Wrong

For a comprehensive understanding of busbar design and applications, we highly recommend reviewing this article on what is a busbar. Compared with cables, busbars usually offer



Circuit configurations (single line diagrams) for HV and

The circuit configurations for high- and medium-voltage switchgear installations are governed by operational considerations. Whether single or



Equipped with a removable **Mounting Plate** inside the enclosure, enabling customized drilling and secure component mounting.



Busbar System in Substation: Arrangement and Reliability

?study of busbar system in substation o Busbar arrangement is the method of connecting incoming and outgoing feeders in a substation. o It helps in safe collection and distribution of

Busbar Design Standards for MV Switchgear

Busbar design within Medium Voltage (MV) switchgear is a critical aspect, fundamentally ensuring the safe, reliable, and efficient operation of power



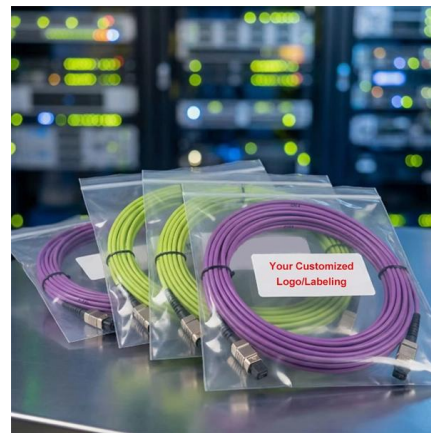


ABB MV Switchgear - Single Busbar Or Double

I'm highly specialized in the design of LV/MV switchgear and low-voltage, high-power busbar trunking (<6300A) in substations, commercial

UniGear ZS1 , ABB

UniGear ZS1 is built as a single busbar, double busbar or double level solution. It is also certified for use in special and harsh applications such as marine or seismic.

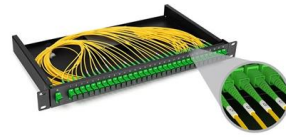


Chapter 3: Main Components of Gas Insulated

Gas Insulated Switchgear (GIS) represents a cutting-edge solution for high-voltage electrical networks, offering a compact footprint, enhanced reliability,

Global Info Research focusing on Industry Analysis, Market Research

Global Info Research owns large basic databases and expert resources. Global Info Research owns large basic databases and expert resources, focusing on Industry Analysis, management consulting, IPO



MMS , Medium-voltage switchgear panel , Overview

MMS is a metal-enclosed, double busbar, air-insulated switchgear system with vacuum interrupters and can be used in applications up to 24 kV. With flexibility in

Cost difference between single busbar and double busbar

Based upon the aforementioned costs, and the single line diagrams in the appendices and associated switchgear numbers, the total estimated cost of switchgear, protection and potential delay risk in the



GE MiCOM P741 Relay for Reliable Busbar Protection

We are leading supplier, trader and exporter of GE Alstom MiCOM Agile P741 Distributed Busbar relay. Get the quote for GE MiCOM P741 Relay!





Single vs. Double Busbar Switchgear: Selection Guide

Explore single and double busbar switchgear systems: advantages, disadvantages, and selection considerations for electrical distribution.



Types 8DA10 and 8DB10 up to 40.5 kV

Medium-voltage switchgear 8DA/B is indoor, factory-assembled, type-tested, single-pole metal-enclosed, gas-insulated switchgear, for single-busbar and double-busbar applications, as well as for

Hybrid Switchgear PASS M0

PASS M0 belongs to Hitachi Energy's innovative high-voltage hybrid switchgear family, PASS (Plug and Switch System). PASS encloses all functions of a complete switchgear bay in a single module.



Advantages and Disadvantages of Double-Busbar Configuration in

Advantages and Disadvantages of Double-Busbar Configuration in Substations A substation with double-busbar configuration employs two sets of busbars. Each power source and each outgoing



Contact Us

For datasheets, pricing, or custom telecom energy solutions, please visit:
<https://www.koskolong.co.za>