



Adam Tas Corridor Energy

Single weight of fiberglass I-beam cable tray





Single weight of fiberglass I-beam cable tray

B-Line series Cable Tray Design Considerations



Cable tray must be capable of supporting not just the weight of the cable, but also the weight of any equipment or materials attached to the cable tray. Additionally, dynamic environmental elements

FIBERGLASS CABLE TRAY SYSTEM

The cable trays manufactured by us are from pultruded sections / profiles of fiberglass, this pultruded sections help in reducing cost, achieving quality, perfection for optimum performance of the tray. At



untitled [dubosenes]

The Cable Load or the working load is the total weight of the cables to be placed in the tray. The NEMA classes are based on cable loads of 50#, 75#, and 100# per Lineal Foot.

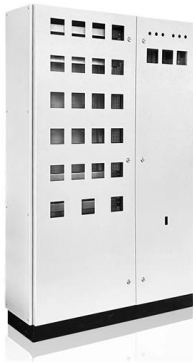


Cable Tray Weight Specifications

The document provides reference material on cable tray weights for different tray series and configurations. It lists the weights of steel and



aluminum side rails and



CATALOG Cable Tray Cable tray systems

Its design includes innovative splice components that can reduce the need for supports and brackets, enable fast, oneperson installation and lower overall costs. Its I-beam and welded construction offers

Cable Ladder Cable Tray Weight Calculation Guide

In this guide, we'll walk you through the step-by-step process for calculating cable tray weight, while providing examples for both channel trays and



CABLE TRAY INSTITUTE

The Cable Tray Institute (CTI) was founded in 1991 to support the cable tray industry by engaging in research, development, education, and the dissemination of



Fiberglass Reinforced Plastic (FRP) Cable Tray

SFSP-INTECH Fiberglass Reinforced Plastic Cable Management System is designed, manufactured, and tested to be installed in most harsh environmental



Fiberglass cable ladder straight section submittal

Fiberglass cable ladder straight section submittal for efficient and durable cable management solutions in various applications.

Fiberglass Cable Tray Specs: Dimensions & Load Data

Technical specifications for B-Line Series 48 fiberglass cable trays. Includes dimensions, load ratings, and part numbering information.



I Beam Cable Tray

The I-Beam cable tray design is another side rail style offered besides C-Channel side rail styles for customers that prefer this style. One advantage of I-Beam ladder cable trays is that hold down clips



CABLE TRAY

SFSP produces a variety of products ranging from cable management systems; cable trays, cable ladders, basket trays, trunkings and support systems, to mechanical cladding fixations, steel lintels

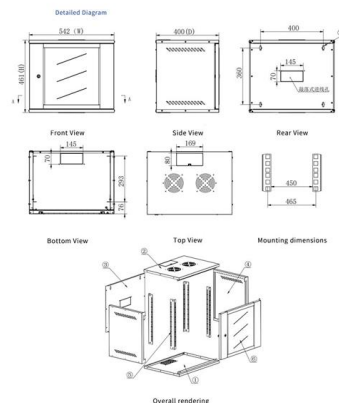


Fiberglass Cable Tray1

Application of fiberglass cable tray fiberglass cable trays are widely used in scenarios with high requirements for corrosion resistance, insulation, and lightweight. In the

HUSKY FIBERGLASS Cable Tray

For more than 30 years, MPhusky's Fiberglass Cable Tray systems have been tested and proven in the harsh environment of the offshore oil and gas industry. Our tray has stood up to the test of being





Design Guide

The process starts with the reinforcements. Typically, unidirectional glass roving is the fiber that runs along the length of the profile. Second, the fiberglass mat is added in, which is multidirectional

Fiberglass Cable Tray and Ladder Systems

The ICMS Fiberglass Cable Management System is designed for extreme corrosive environments and includes a range of fiberglass cable trays and ladders that are lightweight, corrosion-resistant, and

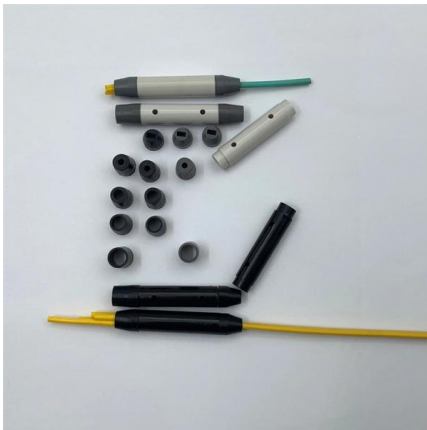


Resources for Cable tray and ladder systems

Eaton's B-Line series metallic cable ladder systems are designed to provide superior strength to weight ratio while providing a lower total installed cost solution.

Cable Tray Systems Catalog

Please click the appropriate link below to view the catalog section as a PDF.



Fiberglass channel tray , Polyester cable ladder , Vinyl

Tested for ABS, NEMA and IEC, B-Line series fiberglass cable tray is ideal for harsh, marine and caustic environments. Learn about its corrosion resistant properties.

Cable Tray Technical Guide A practical guide to product selection and

Cable Tray Technical Guide A practical guide to product selection and installation This guide for engineers and installers has been developed by ABB as a practical reference regarding cable tray



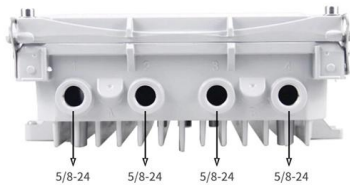
MANISHA_Booklet_Design_Printing_File.cdr_2017

Manisha Composittek is engaged in design, manufacturing & supply of fiberglass cable trays for various industries like chemical, fertilizers plant, paper & pulp, power plants, etc to suit Construction and



Product Catalogue Cable Management Solutions

With over 20 years of experience T& B Cable Tray provides a complete solution in cable management systems including design, manufacturing and technical support by offering a complete solution for

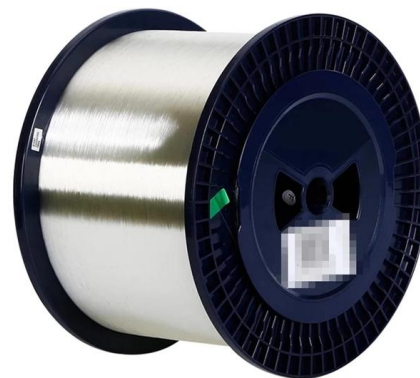


Enduro_Specification_Ladder Cable Tray_04-30-21

Straight section ladder tray shall be prefabricated structures made from fiberglass reinforced plastic, consisting of two longitudinal members (side rails) connected by transverse rungs, meeting all the

T& B® Cable Tray

Nonmetallic cable tray gives you the load capacity of steel plus the inherent characteristics afforded by our pultrusion technology: non-conductive, non-magnetic and corrosion-resistant. Although light in



Cable Tray Systems

Our aluminum, I-beam ladder cable trays feature 3-inch tangents and are using connectable with our fittings and accessories. Aluminum ladder cable trays



Fiberglass Cable Tray Structural Characteristics & Loads

Technical data on fiberglass cable tray systems: beam types, load calculations (wind, snow, seismic), and splice plate design.



Contact Us

For datasheets, pricing, or custom telecom energy solutions, please visit:
<https://www.koskolong.co.za>