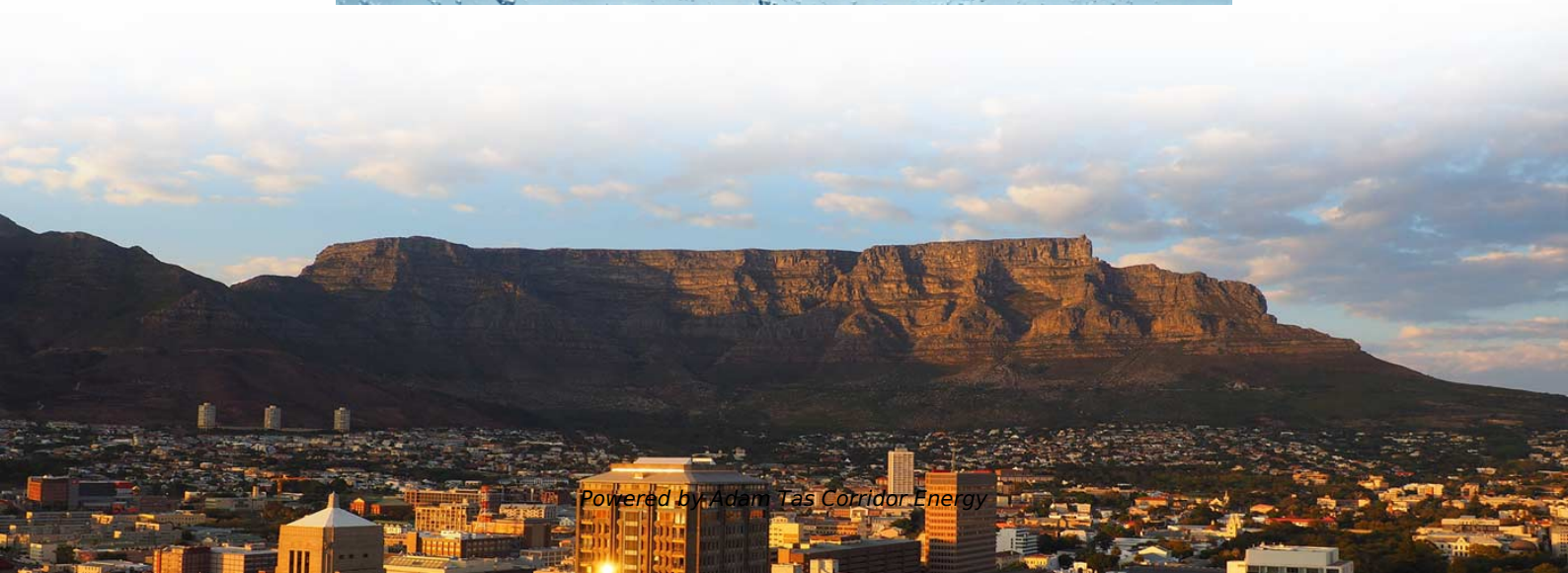
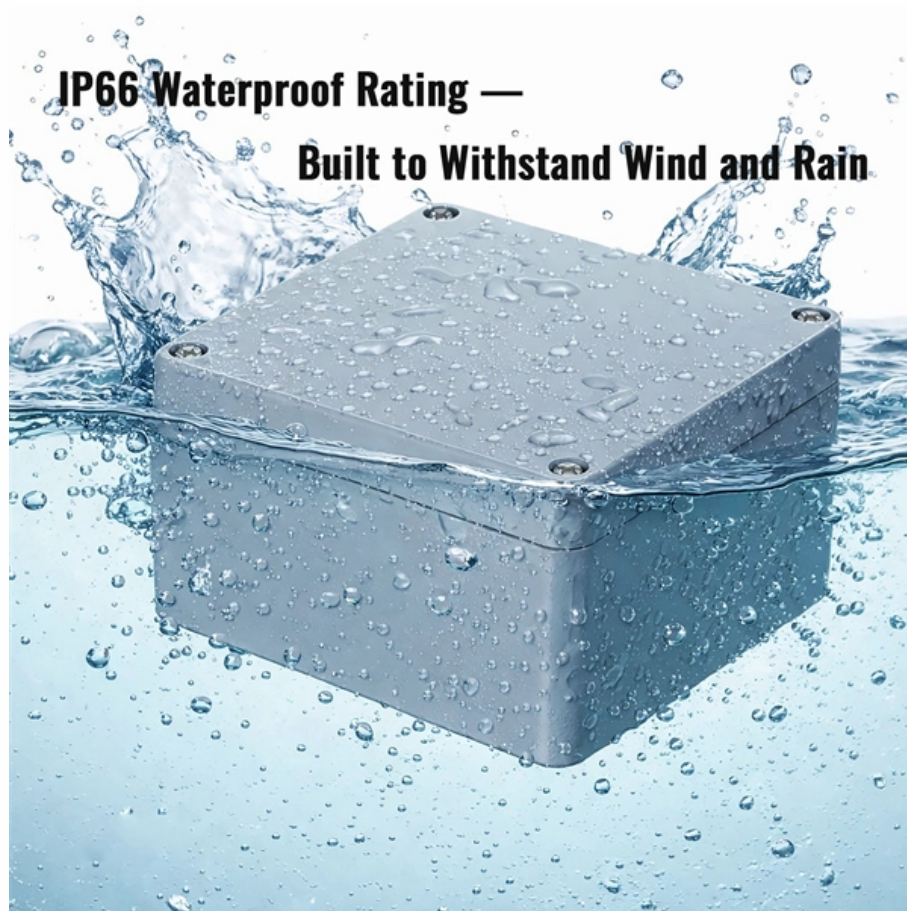




**Adam Tas Corridor Energy**

# **Size of busbar for high voltage switchgear**





## Overview

---

The busbar sizing calculator determines the required busbar dimensions based on the continuous current rating, short circuit withstand, and thermal limits for switchgear assemblies. Busbars are the backbone of switchboards, distribution boards, and electrical panels. They carry large currents and must be properly sized to ensure safety, performance, and compliance. A busbar is a solid, uninsulated metallic strip or bar, typically housed inside switchgear panels, motor control centers, or busway enclosures.



## Size of busbar for high voltage switchgear

---



### Electrical Busbars: Function, Types, Design & Selection

Electrical busbars are solid conductors used to carry and distribute high current in switchgear, panels, substations, and power systems. This guide

### Copper & Aluminum Busbar Ampacity, Sizing & Calculation Guide

Industrial high-voltage switchgear uses 100x10mm copper busbars (1850A ampacity) for a 3000A rated current. Double-layer busbars boost ampacity to 2923A, meeting industrial power



### Bus Bar Size Calculator

Busbar is simply a node (conductor or group of conductors) which collects power from incoming feeder and distribute it to outgoing feeders. A busbar size is

### Busbar Size Calculator , Ampacity & Sizing DIN 43671 Tool

Calculate busbar ampacity and sizing based on DIN 43671. Supports Copper/Aluminum, multiple



parallel bars, and surface finishes for industrial switchgear



### **Busbars , Electrical Busbars & Copper Busbars , RS**

The type and size of your busbar would depend on where it is used. Copper Busbars: This type of busbar is generally used for high-current applications due to its excellent electrical conductivity.



### **High Voltage Switchboard Busbar Design Basics**

Learn busbar design using IEC 61439 rules and ABB guidelines for current, temperature, and clearances to keep panels safe, efficient, and compact.



### **Switchgear Busbar Sizing Guide: Current, Temperature Rise, and**

All Snapshot switchgear busbar sizing decisions should start from voltage class, fault level, and installation environment. Protection, interlocks, and maintenance access are often as





## IEC Standard For Busbar Sizing: Complete Guide To

IEC Standard for Busbar Sizing The International Electrotechnical Commission (IEC) issues globally accepted standards that promote safety and

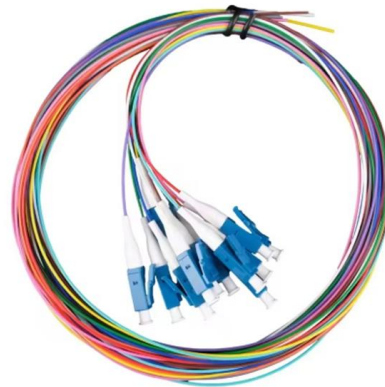


## Bus Bar Design for an Electrical Switchboards

The cross-section obtained from both calculations should be compared, and the higher value is to be considered for design. Accordingly, a busbar cross-section of 1600 mm<sup>2</sup> (Aluminium) is

## Busbar Size Calculation -- Simplified for Engineers

? Busbar Size Calculation -- Simplified for Engineers Sizing a busbar correctly ensures safe and efficient power distribution. This quick guide explains the basics of busbar design, the thumb



## Aluminium flat busbar for switchgear size selection and engineering

Common aluminum busbar size specifications cover three core dimensions: width, thickness and length. In low-voltage switchgear applications, the width of aluminum flat busbar is



## Busbar Design in Switchgear: Key Principles & Best Practices

Busbar Size and Shape: A larger busbar carries current more easily and produces less heat. Flat busbars are popular



## Busbar Size Chart: Types, Current Rating, Materials

Why Busbar Size Matters The physical size of a busbar directly affects electrical performance, thermal behavior, and overall system safety. Proper sizing ensures that the conductor

## Busbar Calculator -- Current Rating, Temperature Rise, IEC 61439

Busbar sizing calculator for copper and aluminum per IEC 61439. Current rating, temperature rise, short-circuit forces, and skin effect. User-selectable busbar dimensions.





## High-Quality Bus bar Insulators Manufacturer , WILLELE

Low Voltage Bus bar Insulators Explore our range of low-voltage busbar insulators made from high-grade DMC/BMC. Multiple sizes, threads and creepage

## Busbar Sizing Calculator , Current Rating Tool , Elec-Mate

Busbar sizing is the process of selecting the correct cross-sectional dimensions for a conductor bar (busbar) that carries electrical current within switchgear assemblies, distribution



## Low Voltage Switchgear Design for US and EU Markets: Busbar

Low Voltage Switchgear Design: How Better Busbar Systems and Smarter Current Ratings Improve Reliability In low-voltage power distribution, the cabinet is never just a cabinet, and



## IEC Standard For Busbar Sizing: Complete Guide To

The IEC standard for busbar sizing provides detailed guidelines to help engineers select appropriate busbar dimensions. This ensures that systems



### **Busbar Size Calculator (IEC & NEC Compliant)**

Calculate the correct busbar size using current (A) or power (kW). Features standard sizing, plus full IEC 61439 & NEC compliant verification for copper and aluminum busbars.



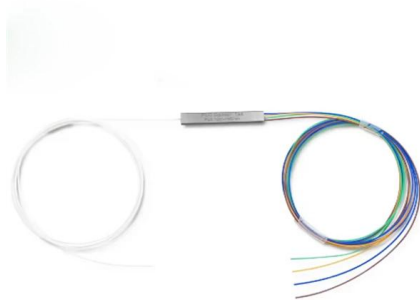
### **Eabel Guide to Electrical Panels & Switchgear: Design,**

Key Design Considerations and Technical Specs Busbar & Short-Circuit Ratings Choose busbars sized for continuous load plus allowance for



### **Type of insulators. (a) Gas-tight conical insulators of a GIS busbar**

A Review on Real-Size Epoxy Cast Resin Insulators for Compact High Voltage Direct Current Gas Insulated Switchgears (GIS) and Gas Insulated Transmission Lines (GIL)--Current Achievements





## Busbar

In electric power distribution, a busbar (also bus bar) is a metallic strip or bar, typically housed inside switchgear, panel boards, and busway enclosures for



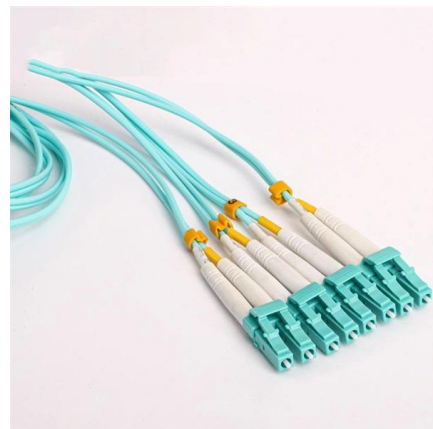
## Major components you can spot while looking at

I'm highly specialized in the design of LV/MV switchgear and low-voltage, high-power busbar trunking (<6300A) in substations, commercial



## JEAN MÜLLER, Product family: NH-fuse-switch-disconnector size 00

Switchgear » (special versions) NH fuse-disconnectors » NH fuse-disconnectors AC 1200V » NH-fuse-switch-disconnector size 00 for busbar mounting 1-/4pole Online catalogue Switchgear (special



## Insulators in Switchgear & Distribution Cabinets: Functions, Selection

Whether you're dealing with low voltage (LV), medium voltage (MV), or even high voltage (HV) systems, insulators play a vital role in ensuring electrical safety, system reliability, and operational efficiency.



## Contact Us

---

For datasheets, pricing, or custom telecom energy solutions, please visit:  
<https://www.koskolong.co.za>