



Adam Tas Corridor Energy

Spacing between parallel distribution boxes





Overview

When installing two cable trays in parallel at the same height, the distance between them should be no less than 0. This spacing is crucial for adequate maintenance access, ease of inspection, and ensuring proper airflow for effective heat dissipation. Copyright © 2008 by the Institute of Electrical and Electronics Engineers, Inc. The spacing between trays, whether horizontal or vertical, depends on various factors like cable type, environment, and tray material. Proper installation can significantly reduce electromagnetic interference, prevent fire hazards, and improve overall efficiency. selection and application of Power Distribution Blocks (PDBs) and Terminal Blocks.



Spacing between parallel distribution boxes

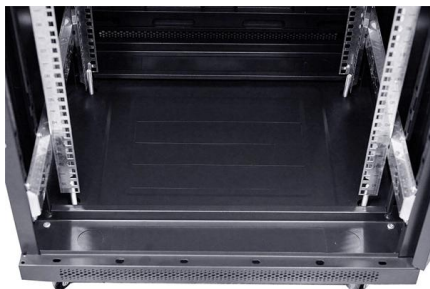


Distribution Box Wiring Steps

?Wiring and Binding? ?Wiring Direction?: Wiring between the main circuit breaker and each branch circuit breaker in the box generally goes on the left, and

Outlet Spacing, Parallel Conductors and More

If you have a Code-related problem or are experiencing difficulty in understanding a National Electrical Code (NEC) requirement and are wondering why or if such a requirement exists, ask Charlie. And



Requirements And Specifications For Installation Of

In flammable and explosive environments, explosion-proof distribution boxes should be selected and explosion-proof treatment should be carried out.

The installation requirements for the distribution box

Learn how to install a distribution box safely and correctly. Covers wiring, placement, standards,



and expert tips for a compliant setup.



X3-EPS+Parallel Box (5pcs) Installation Guide-EN

There are three work modes in parallel system, and your acknowledge of different inverter's work modes will help you understand parallel system better, therefore please read it carefully before operating.

366.20 Conductors Connected in Parallel.

In the 2017 NEC, parallel conductors inside an auxiliary gutter must be grouped together to prevent current imbalance in the paralleled conductors due to



How To Connect The Household Distribution Box? How

For a household PZ30 distribution box, the thickest wire in the box will not exceed 6 square millimeters, and is generally 4 square millimeters. If the





How to Install a Cable Distribution Box Safely and

In modern electrical systems, cable distribution boxes (also known as electrical distribution boxes or distribution boxes) play a crucial role as the key



Spacing Requirements for Power Distribution and Terminal Blocks

However, there is great confusion concerning the spacing requirements of these devices. This paper focuses on proper applications, based upon these spacing requirements.

A Definitive Guide To Distribution Boxes

The distribution box acts as the center of power distribution, distributing electricity to all connected devices. A distribution box, also known as a distribution board, panel board, breaker



Pipeline Separation Design & Installation Guidance

The current pipeline separation standards are based on accumulated field and design experience, and the Ten State Standards.¹ These standards generally require a minimum horizontal separation of 10



NEC Article 110.34: Electrical Room "Basics"

NEC Table 110-34, updated from 600 V to 1000 V in 2017 Minimum clearances are established for work spaces in front of high voltage - electrical equipment such as



Spacing Requirements for Power Distribution and Ter

Spacing Requirements for Power Distribution and Terminal Blocks Spacing Requirements for Power Distribution and Terminal Blocks New requirements in



How to Space Objects an Equal Distance Apart in

You can space objects an equal distance apart in a couple of ways in PowerPoint. These objects may be shapes, images, placeholders or text boxes. If the objects





Optimizing layout for paralleling power discrete semiconductor devices

One crucial aspect to consider is the proper distribution of current among the paralleled devices. Paralleling challenges can be overcome by utilizing IGBTs with closely matched characteristics,

Distribution Line Valve Spacing

(a) Each high-pressure distribution system must have valves spaced so as to reduce the time to shut down a section of main in an emergency. The valve spacing is determined by the operating pressure,

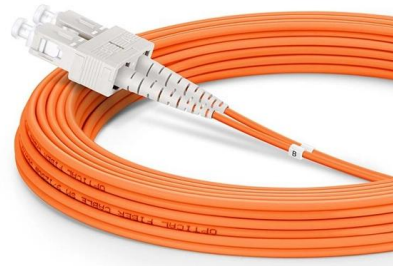


Additional questions (and answers) on installation of

Does the CE Code regulate spacing requirements between multi-conductor cables or between conductors in raceways installed above the ground?

Cable Distribution Box Layout: 10 Industrial Strategies

This article will detail the practical strategies for optimizing the layout of cable distribution boxes in industrial scenarios, integrating the advantages of Chuanli products and industry best



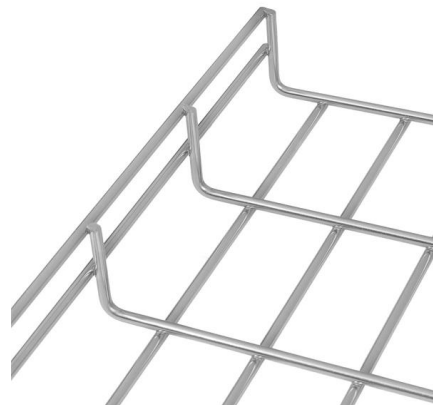
Understanding Distribution Boxes: Your Guide to Power



Weatherproof Distribution Boxes These serve specific outdoor purposes, with rain, dust, and extreme temperatures sealed shut, protecting any

FEEDER & BRANCH CIRCUIT REQUIREMENTS

Listed power distribution blocks can be used in all applications as they exceed spacing requirements. recognized power terminal blocks may be suitable in a feeder circuit, should they meet the spacing



Cable Separation Standards , Winnie Industries

Cable separation is a code-mandated safeguard that ensures signal clarity, system reliability, and successful inspections through disciplined spacing



Spacing between multiple overhead lines , Eng-Tips

In the USA, the National Electric Safety Code (NESC) Rule 235 gives minimum distances between adjacent circuits, with distances depending on whether the circuits are on the



Presentation

When space hit 68°F, VAV boxes went into heating mode, with 68°F setpoint (per California code) Space was maintained at 68°F until the end of the day VAV boxes were reset to 10% (0.1 CFM/sqft)

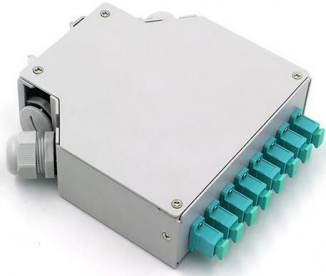
Cable Tray Technical Guide A practical guide to product selection and

Cable tray length is selected based on the load to be supported, the distance between the supports (also referred to as the span), and handling and installation constraints.



Cable Tray Spacing Standards for Installation and Safety

When installing two cable trays in parallel at the same height, the distance between them should be no less than 0.6 meters. This spacing is crucial for adequate maintenance access, ease of



Contact Us

For datasheets, pricing, or custom telecom energy solutions, please visit:
<https://www.koskolong.co.za>