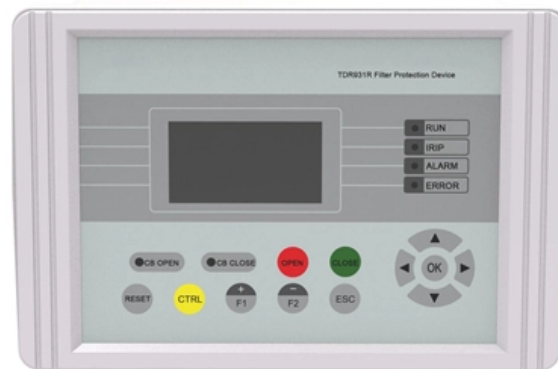




**Adam Tas Corridor Energy**

# **Specifications and models of optical cables for spliced power cabinets**





## Specifications and models of optical cables for spliced power cabinets



### Splice Closure Selection Guide for Corning Cables

The selection of the appropriate fiber optic splice closure can be a very daunting task. There are many possible ways to put two or more cables together or drop a single fiber at a location. The selection

### Optical Cross-Connect Family

All OCC cabinets accept Eclipse®, FDC® and LDC connector module housing units for installations using field connectorization or factory-stubbed housings. Stubbed housings with outdoor cable are

#### Pre-Terminated Patch Panel

- Multi-application support
- Flexible configuration
- Modular design



Multi-functional Sliding Patch Box, Modular



Modular Sliding Patch Box



Sliding Patch Box, Modular



### SPECIFICATION STANDARD OPTICAL FIBER BACKBONE

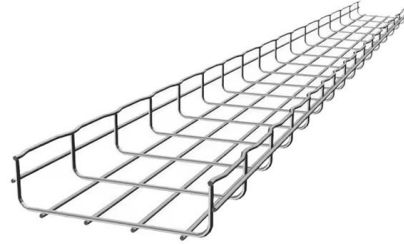
Fiber optic backbone cable shall be employed between the ER and each TR for voice, data and special systems connectivity. Optical fiber inter building cabling systems vary depending upon system

### Handbook Optical fibres, cables and systems

Moreover, the optical plant needs a lot of complementary hardware (passive nodes, optical



distribution frames, joint closure, cabinets, etc.), which needs a detailed development and specification both for



## Fiber Optic Cables Technical Data

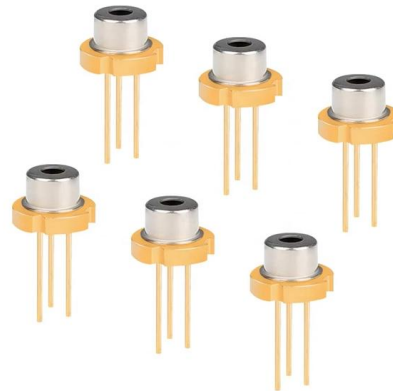
Formula: Approximate diameter = 1.128 x Length x Width  
Sensing Tip Material  
Sheathing Material  
Sensing End Tip and Nut Material  
Sensing End Tip and Nut Material  
Plastic Fiber Optic Cables for use with Small Aperture Sensors  
45FPL-xxxxM4 x 0.7  
Sensing Mode  
Sensing End Tip Style  
Sensing Mode  
Sensing End Tip Style  
Approximate Dimensions [mm (in.)]  
Unterminated Plastic Fiber Optic Cables  
ATTENTION Fiber optic cables are not recommended for explosion proof applications in hazardous environments. The fiber optic cable can provide a path for explosive fumes to travel from the hazardous area to the safe area. See more on literature.rockwellautomation AFL

## High-Capacity Mass Fusion Splice Cabinet Rack Mount

Our compact, high-density, indoor Mass-Fusion Rack-Mount Splice Cabinets are perfect for data center interconnection applications.

## Ribbon Fiber Cable A comparison with Non-Ribbon Cable\_october copy

What is a Ribbon Optical Cable? Optical fiber ribbons are made up of individual fibers aligned in a single row then impregnated with an acrylate UV curable resin. Multiple individual optical ribbons can be



### Fiber optic cabinets

Fiber optic cabinets in stock Enoc fiber optic cabinets are available in three widths of 330 mm, 390 mm and 600 mm for immediate delivery. The cabinets are available

### Optical Fiber Splicing Systems

Hubbell's Optical Fiber splice enclosure, splice shelf and splicing trays provide a complete network interconnection solution for splicing pig-tails to outside plant fiber optic cable.



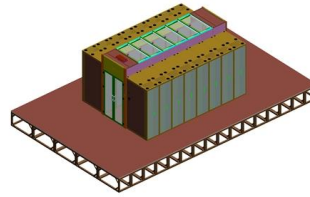
### Optical Fiber Cable Reference Guide

Optical fiber is more and more demanded thanks to the many benefits the technology provides. These benefits include high bandwidth, high transmission speed, noise immunity, enhanced data security



## Optical Cross-Connect (OCC) Cabinets & Kits , Corning

Corning's family of optical cross-connects (OCCs) are versatile, fully enclosed cabinets designed for fiber optic rack-mountable hardware. All products in this



## Fiber Optic Splice Boxes: Selection Criteria, and

Introduction In our hyper-connected world, the seamless flow of data is powered by a vast, underlying infrastructure of fiber optic networks. At the core of this system's

## FIBER OPTIC SPLICE CABINET F

Before termination of Optical Fiber Cable, it is required to cut holes in the "Base plate" (Cable Coiling Box) & such holes should be aligned with the "Base Plate" in the main FDH unit.



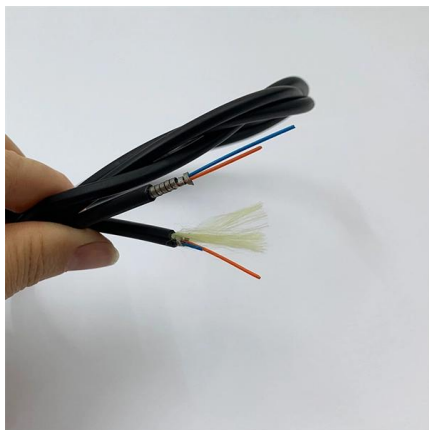
## OPT-X(TM) SDX Splice Modul

Modular design allows for easy maintenance of individual spliced fiber and scaling up without impacting adjacent fibers Accessory kit includes heat-shrink splice sleeves, braided mesh sleeve, build-up tape



## High-Capacity Mass Fusion Splice Cabinet Rack Mount

Our compact, high-density, indoor Mass-Fusion Rack-Mount Splice Cabinets are perfect for data center interconnection applications. They are designed to provide



## 271323-2021-OpticalFiber

The warranty covers each product component of the Corning Cable Systems cabling system including optical fiber cables, interconnection and splice hardware, mechanical splicing products, and field

## Home

Optical Cable Corporation Networks that Mean Business High-performance networks are essential to business, including manufacturing, transportation, education,





## **CORNING OPTICAL COMMUNICATIONS GENERIC**

[1.2.4] Fiber optic hardware specified herein shall be intended for an indoor environmentally controlled building, commercial facility or computer room, or splicing vaults and building entrance terminals

## **LIGHTSPACE(TM) DPC Series Optical Distribution & Splice Enclosure**

SPECIFICATION Optical distribution and splice enclosures shall protect, manage, and organize fiber terminations and splices in a rack-mount environment. Units shall be LGX compatible and support



## **Transmission**

It shall be possible to use it for both Armoured & Metal Free type of Optical Fibre Cables and also compatible for different types of installation practices of cable installations viz. duct, aerial & directly

## **Telecom Enclosures & Cabinets , SMC Optical Cross**

LongXing SMC Series polycarbonate outdoor cabinet is a perfect solution for outdoor fiber connection and distribution applications. Special glass fiber reinforced



**such/ignore.txt at main · yeerma/such · GitHub**

aasdadasa. Contribute to yeerma/such development by creating an account on GitHub.

## Fiber Optic Cabinets Types Prices & Technical Specifications

What Is Fiber Optic Cabinets / Optical Distribution Cabinet? Fiber optic cabinets/Optical Distribution Cabinet designed to protect fiber optic cable from environmental conditions. These fully enclosed



## FibreFab-Fibre-Optic-Cable-Catalogue

"Our Optronics fibre optic patchcables meet the demands posed by the equipment cabinet environment. We offer connectivity ready cables to achieve maximum fibre density with the latest specification

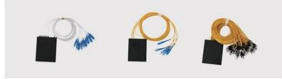


## ITU-T Rec. L.206 (08/2017) Requirements for passive optical nodes

Summary Recommendation ITU-T L.206 refers to outdoor optical cross-connect cabinets deployed as passive optical nodes in outdoor environments. It deals with the cabinet housing, internal fibre



Optical splitter cassette type refers to the port 2.0 mm / 3.0mm slip on fiber multichannel direct output with a plastic box packaging protection and easy to use.



Optical splitter rack-mount type is using metal box packaging which can be installed in 19" frame or cabinet.



Optical splitter GSP fiber type is made by flame retardant material box or plate packaging. Mainly suitable for cable ports, fiber box and wall-mounted terminal box.



Optical splitter main type refers to the port 0.9 mm slip on fiber multichannel direct output with a compact design and easy to use.



## Optical Fiber Splicing Systems

Optical Fiber Splicing Systems Hubbell's Optical Fiber splice enclosure, splice shelf and splicing trays provide a complete network interconnection solution for splicing pig-tails to outside plant fiber optic

## Spec Sheet

These high performance and low power consumption AOCs are Ethernet, InfiniBand and MSA compliant with a robust construction, including a high-strength pull tab latching system which reduces plug loss



## Slimline Hybrid Cables

Offering the robust protection you expect from OCC, these small diameter hybrid cables are thinner, lighter, and more flexible than other hybrid cables on the



### **Splice box and Cabinets for fiber optics , Foss Fibre Optics**

The access point terminates the fiber at the user end and is in many cases a wall mounted box. In residences, the natural choice is a subscriber boxe, while cable channel and wall outlets are



### **Contact Us**

---

For datasheets, pricing, or custom telecom energy solutions, please visit:  
<https://www.koskolong.co.za>