



Adam Tas Corridor Energy

Specifications and parameters of a 24-position distribution box



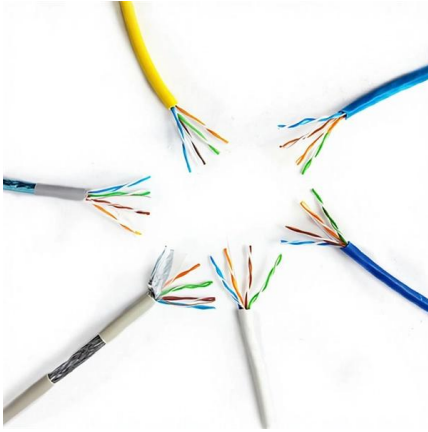


Overview

24 modules: Allows the installation of various electrical devices, such as circuit breakers, switches, relays, and other modules. Dimensions: 328 x 270 x 100 mm, facilitating easy installation of the panel in standard locations. The MDB-M24 is an indoor wall box, particularly adapted for FTTH Building (MDU) cabling. Designed for industrial environments and protected outdoor areas, this enclosure ensures secure and flexible cable management with pre-mounted double membrane seals for easy installation. METAL BASE MCB Flush Distribution Box 24 ways With Bus Bar Dimension: (LxWxH) mm 300x245 x 85 IP40, Material : Metal Body thickness: 1. The PPFDB-0324-SCA comes with 24 Simplex SC/APC Coupler Ports installed (pigtailed sold).



Specifications and parameters of a 24-position distribution box



24 Way Distribution Box

Designed for industrial environments and protected outdoor areas, this enclosure ensures secure and flexible cable management with pre-mounted double

Splitter Distribution Box 24 Ports with SC/APC Adapter

Indoor/Outdoor Wall Mounted, Single Door Fiber Distribution box is ideal for end terminations of fiber optic runs in residential or commercial buildings. Integral gasket seal provides IP65 level of protection.



Distribution Box Guide: Types, Components & Solutions

Understand distribution boxes (DB boxes) in 5 minutes. Learn about types, components, functions, and uses. Find the perfect DB box for your needs.

SELECT YOUR DISTRIBUTION SYSTEM

Distribution is an essential function for the electrical panels, as well as for control and circuit



protection. As well as purely technical factors (intensity, number of outputs, etc.), the choice of a distribution



Ex9xg Catalogue 2024

5. Application The Ex9XG series plastic distribution box is suitable for construction sites, outdoor charging stations parking lots, shops, gardens, bathrooms and other places, electricity meters and

"Guidelines for Household Distribution Box Specifications and

Additionally, any metal enclosure must be properly grounded to ensure safety. Conclusion Installing a household distribution box requires careful attention to specifications and



Essential Insights on Septic Distribution Box Sizes and Maintenance

At the heart of these systems lies the septic distribution box, a crucial component that ensures the even distribution of effluent from the septic tank to the drain field. Understanding the



Hybrid Optic-Power Distribution Box 24 fibres

Telhua's Hybrid Optic-Power Distribution Box 24 fibres delivers high-density fiber optic termination with IEC/TIA compliance, IP65 protection, and optimized



Marshal MDB-24F 24 Way Distribution Box , Marshal

Marshal MDB-24F 24 Way Distribution Box METAL BASE MCB Flush Distribution Box 24 ways With Bus Bar Dimension: (LxWxH) mm 300x245 x 85 IP40,

DRAFT SPECIFICATION FOR L. T. DISTRIBUTION BOX OF

DRAFT SPECIFICATION FOR L. T. DISTRIBUTION BOX OF DISTRIBUTION TRANSFORMER (DTR) OF DIFFERENT RATINGS WITH INCOMING PORCELAIN REWIREABLE FUSE UNIT AND



Distribution Boards & Consumer Units

Distribution boards, together with modular ABB system pro M Compact protection devices and Modular Din Rail Components, can be used for many applications in electrical building installation. Solutions



Fiber Distribution Box (FDB) 24 Ports

Integrated bend radius protection Sealing glands for up to 24 exiting cables + 2 incoming cable
Removable door for ease of installation Supplied with 24 heatshrink splice protectors Supplied with

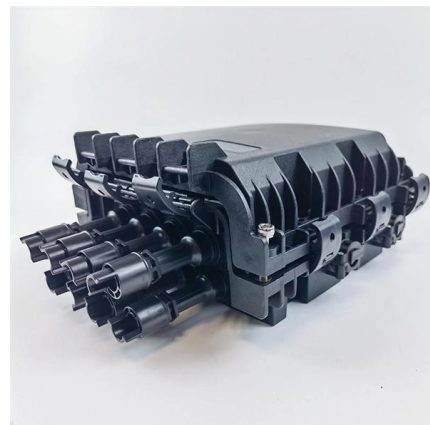


mbox_om.pdf

All our boxes are 1mm thick metal and each part is powder-coated for corrosion protection. The doors are versatile and can be used on either the left or right side. In addition, for flexibility, the cable entry

Technical Specifications for Outdoor LT Distribution boxes with

Scope: The scope of this specification covers Weather / Vermin proof LT distribution boxes (LTD) with controllers, MCCB, MCB, Bus bars, Contactors, CT's, Energy Meter, LT gas filled fixed capacitor, DC





W24 Indoor/Outdoor Distribution Box

Each enclosure has integrated strength member tie positions and bend radius protection with the addition of a removable front door, allowing for quick and easy installation.

Distribution Boxes: Types and Functions

Learn what an electrical distribution box (DB/distribution board) is, its main components (MCB/RCCB/RCBO, SPD, busbar) and common types.

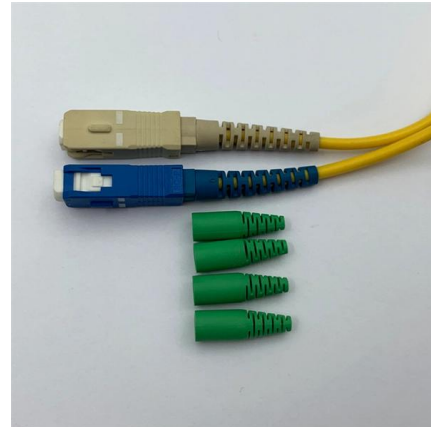


Final_product_book_12_curve

GSDB-4030 400x300x190 3 Phase Service Connection Distribution Box/ ABC Distribution Box 11.

Distribution Box , Panel 24 Modules , Surface-Mounted , Plastic

The MKP12-N-04-24-41-FCN distribution panel can accommodate up to 24 modules and is made from durable plastic, providing longevity and resistance to environmental factors.



Area distribution box with cassettes to be equipped with 12 or 24 RJ45

3. POSITIONING Area distribution boxes can be fixed in floor tiles, partitions or ceilings with screws or nails, or fixed on cable trays with Colson cable ties.



Meba Electrical Distribution Panel MCB Box MB-AS

Product Description Meba Electrical Distribution Panel MCB Box MB-AS 24ways are mainly used in the circuit of AC 50Hz, rated voltage 220V/380V, and acted to



Electrical distribution box 24 modules of 17.5 mm ABS

Specifications ABS plastic distribution box with IP40 environmental protection.





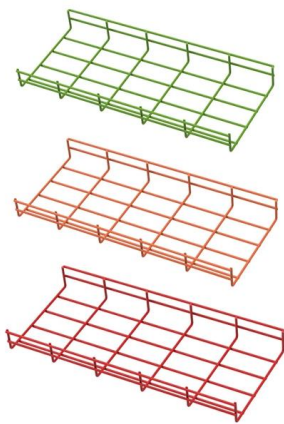
TECHNICAL SPECIFICATION FOR LT DISTRIBUTION BOX

1.1 The Box shall have double door with self locking (When the main MCCB is in close position the inner door can not be opened and after closing of the inner door only the main MCCB can be closed)



2. Imported design is convenient for expansion.

The design of two inlets saves space and allows for rear line entry.



MNS® Low Voltage Distribution Board and Power Cabinet

Technical Info -- From the sub distribution to factory power supply, from the general industry to the marine, nuclear power plant, MNS® power distribution box can provide high security, high reliability

Distribution box catalogue , PDF

This document provides specifications for various distribution boxes including dimensions, mounting sizes, and number of ways. It includes specifications for



DISTRIBUTION BOX

Technical Specification for Distribution Box (DB)- Accessory for LT AB Cables 1. SCOPE 1.1 This Distribution Box (DB) should be made up of Weather & Moisture Proof Outer box with Spring loaded



WM062-02 Modular Distribution Box MDB-M24

The MDB-M24 is an indoor wall box, particularly adapted for FTTH Building (MDU) cabling. The MDB-M24 allows the connection, through patch panels or directly by splices, between the optical fibres



Contact Us

For datasheets, pricing, or custom telecom energy solutions, please visit:
<https://www.koskolong.co.za>