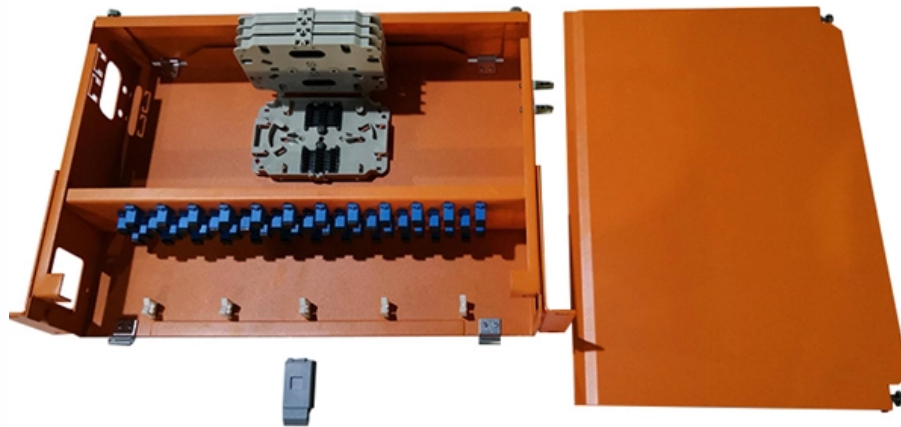




Adam Tas Corridor Energy

Sri Lanka Transparent Optical Cable G 652





Sri Lanka Transparent Optical Cable G 652

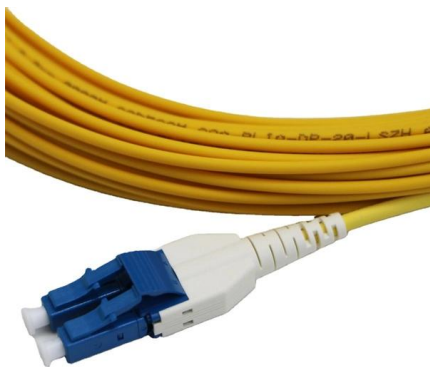


Spec G652D Fibre Optic Cable

Home / Fibre Optic / Cable / Indoor Cable / Fibre Specs Spec G652D Fibre Optic Cable By suppressing the water peak that occurs near 1383nm in conventional

What is G652D Fiber Optic?

La fibra G652D es el modelo estándar más utilizado actualmente en los sistemas de comunicación. Tiene un excelente rendimiento óptico.



G652 and G655 Single mode Fiber Optics guide

There are two primary sources of the specification of single-mode optical fiber. One is the ITU-T G.65x series, and the other is IEC 60793-2-50.

ITU-T Rec. G.652 (11/2009) Characteristics of a single-mode optical

Recommendation ITU-T G.652 describes the



geometrical, mechanical and transmission attributes of a single-mode optical fibre and cable which has zero-dispersion wavelength around 1310 nm.



ITU-T G.652.D Fiber

International Standards Sterlite® OH-LITE® complies with or exceeds ITU recommendation G.652.C/D and I EC 60793-2-50.



Colored Optical Fiber Cable - Single Mode (ITU-T)

Description High-Performance Fiber Cable with Color-Coded Precision Designed for high-performance fiber optic networks, this Single Mode Colored Optical Fiber



Single Mode Fiber G652D

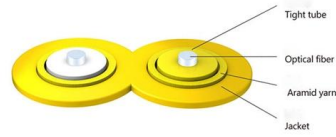
This single-mode optical fiber (SMF, ITU-T. G.652.D) has significantly reduced optical attenuation at water absorption wavelength around 1383nm. It provides expanded transmission window from





Optical Fibre Standard G.652 Guide

T-REC-G.652-200911-S!!PDF-E - Free download as Word Doc (.doc), PDF File (.pdf), Text File (.txt) or read online for free. This document provides Recommendation ITU-T G.652 which describes the



Cable structure



G.652.D Single-Mode Optical Fibre Specifications

G.652.D Single-Mode Optical Fibre Specifications
*Values for cabled fibre, local attenuation discontinuity $\leq 0.1\text{dB}$ Note: Due to OTDR measurement uncertainty B3 International cannot guarantee

A Comparison of Single Mode Fiber: G.652 vs. G.655

Single mode fiber optic cables are widely used for long-distance communication due to their ability to transmit data over greater distances with



Single Mode G.652.D Optical Fiber

Sinocomms' G.652.D single-mode optical fiber is designed specially for optical transmission systems operating over the entire wavelength window from 1260nm to 1625nm.



Characteristics of G.652 Optical Fiber

G.652.A fiber is used to support G.957 and G.691 with a maximum rate of STM-16 or 10Gbit/s and a maximum transmission distance of 40 km (Ethernet) and STM-256 for G.693

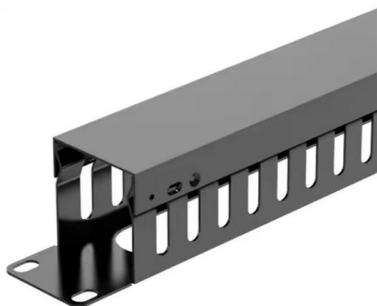
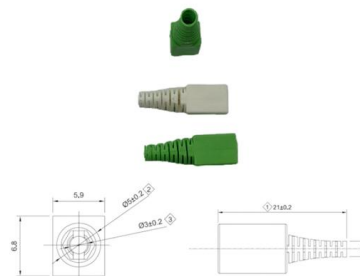


G652, G657A, G655, G654 Optical Fiber

G654: Ultra-low loss optical fiber, mainly used for transoceanic optical cables. The ordinary core is pure SiO₂, and the ordinary core needs to be doped

Enhanced Single-Mode Fibre ITU-T G.652

APPLICABLE STANDARDS IEC / EN 60793-2-50
type B-652.D ITU-T Recommendation G.652.D



Draka Single-Mode Fiber Overview , PDF , Optical Fiber

Draka's Single-Mode Fiber (SMF) G.652.B offers high reliability and performance for telecom applications across various cable constructions, operating efficiently at 1310 nm and 1550 nm



G.652 : Characteristics of a single-mode optical fibre and cable

The file initially posted on 2 February 2017 was replaced on 11 May 2017 to update the History section. Superseded

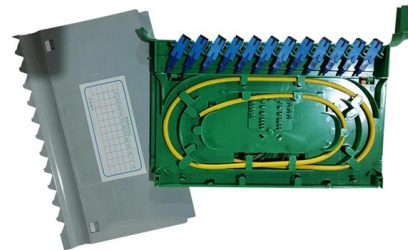


Single-mode optical cable

Find out all of the information about the Prysmian Group product: single-mode optical cable G.652 Series. Contact a supplier or the parent company directly to get a

CENTRAL TUBE METALLIC ARMOR CABLE

1.3. LIFE TIME Optical fibre cables supplied in compliance with this specifications is capable to withs-tand the typical service condition for a period of twenty-five (25) years without detriment to the



G.652

G.652 was originally developed in 1984 by ITU-T Study Group XV. Subsequently, revisions were published in 1988, 1993, 1997, 2000, 2003, 2005, 2009, 2016, and 2024 (from 1997 as Study Group 15).



ITU-T Rec. G.652 (11/2016) Characteristics of a single-mode optical

Characteristics of a single-mode optical fibre and cable Summary Recommendation ITU-T G.652 describes the geometrical, mechanical and transmission attributes of a single-mode optical fibre and



ITU-T Rec. G.652 (11/2009) Characteristics of a single-mode optical

Characteristics of a single-mode optical fibre and cable Summary Recommendation ITU-T G.652 describes the geometrical, mechanical and transmission attributes of a single-mode optical fibre and

Selection of different ITU-T G.652 cabled -fibers in optical fiber networks

Abstract The selection of right fiber or cable in network deployment is very critical due to high deployment costs. In this paper, various operational factors affecting 100G transmission over





**briticom , briticom@briticom , +44
(0)1604 434 186**

briticom , briticom@briticom , +44 (0)1604 434
186

What Is G.652 Fiber? G.652 vs G.652.D, G.652 vs

What Is G.652 Fiber? Among all the single mode fiber types, G.652 fiber is by far the most widely installed single mode fiber optic cable globally. So



G.652D Optical Fiber: Specifications, Price Factors

For network planners, project managers, and procurement specialists, understanding the G.652D fiber specification, current G.652D fiber

Fiber Optic OTDR Launch Cable Box G652D Single Mode Sri Lanka

Shop Fiber Optic OTDR Launch Cable Box G652D
Single Mode 9125 with Low Loss LCUPC-LCUPC
Connectors Dead Zone Eliminator Fiber Box
500M online at a best price in Sri Lanka.
B08DMTSGFC



Optical Fiber Single-Mode Fiber G652.D (008)

"Leviton is dedicated to designing, developing and manufacturing sustainable high performance structured cabling and specialty cabling solutions." The information contained in this document is

T& G Genex

Leading, professional, experienced and globally recognized fiber optical, networking hardware and service provider in Sri Lanka - TG Genex.



Contact Us

For datasheets, pricing, or custom telecom energy solutions, please visit:
<https://www.koskolong.co.za>