



Adam Tas Corridor Energy

Standard Formula for Cable Tray Tees





Overview

The basic formula for Cable Tray Fill Ratio is: Step 1: Calculate the area of a single cable: $\text{Area} = \pi \times (\text{Diameter} / 2)^2$. Our free calculator helps you determine the correct tray size based on NEC and IEC standards. The mechanical and electrical characteristics, tests, certifications, overall quality management, recommendations mentioned. This publication is intended as a practical guide for the proper and safe* installation of cable ladder systems, cable tray systems, channel support systems and associated supports. Stop Costly Cable Tray Installation Errors Now: Avoiding Mistakes in Instrumentation Cable Tray Installation: A Guide for EPC Projects Cable tray sizing in real EPC projects is not limited to simple area calculation.



Standard Formula for Cable Tray Tees



GENERAL INFORMATION

Cable trays or raceways often provide a convenient, safe and efficient method of fiber optic cable installation. Trays can be installed in ceilings, below floors and in riser shafts. When installing fiber

IEC Standard for Cable Tray: Complete Technical Guide

One of the most recognized frameworks globally is the IEC standard for cable tray systems. This standard ensures safety, durability, and performance



Standard Cable Tray Types and Fittings

This document describes the types, materials, dimensions, and fittings for standard cable tray systems. It outlines ladder, perforated, solid bottom, trough, channel,

Full cable tray systems specification document

B. Cable tray systems are defined to include, but are not limited to straight sections of [ladder



type] [trough type] [solid bottom type] [channel type] cable trays, bends, tees, elbows, drop-outs, supports



CABLE TRAY

This standards publication was developed by the NEMA Metal Cable Tray and Nonmetallic Cable Tray Sections. Section approval of the standard does not necessarily imply that all section members voted



LEGRAND CABLE TRAYS TECHNICAL GUIDE

Not all cable trays are equivalent. The mechanical and electrical characteristics, tests, certifications, overall quality management, recommendations mentioned in this technical guide only apply to our



Free Cable Tray Sizing Calculator -- IEC, AS/NZS, NEC, BS

The cable tray calculator determines the required tray width and type based on the number and size of cables to be installed, ensuring adequate fill levels and derating compliance.



26 05 36 Cable Trays for Electrical Systems

Install cable tray as a complete system, including fasteners, hold-down clips, support systems, barrier strips, adjustable horizontal and vertical splice plates, elbows, reducers, tees, crosses, cable



B-Line series Cable Tray Design Considerations

As an industry leader in cable tray, Eaton offers one of the widest ranges of cable management solutions available in the market today with its B-Line series portfolio. With unmatched quality and service, we

A Guide to Installing and Supporting Electrical Cable Trays

A professional guide to installing electrical cable tray systems per NEC Article 392. Covers support, securing cables, and fill calculations.



Cable Tray Raceway Fill and Load Calculations

Resources For Electrical & Electronic Engineers
Cable Tray Raceway Fill and Load Calculations
Cable tray / raceway is integral part of any cable management



GUIDE CABLE TRAYS TECHNICAL

In accordance with its continuous improvement policy, Legrand reserves the right to change the specifications and illustrations without notice. All illustrations, descriptions and technical information



GUIDE CABLE TRAYS TECHNICAL

NEMA VE 1-2017 Specifies requirements for metal cable trays and associated fittings designed for use in accordance with the rules of Canadian Electrical Code, Part I and the National Electrical Code®

IEC Standard for Cable Tray: Complete Technical Guide

IEC Standard for Cable Tray: Complete Technical Guide The International Electrotechnical Commission (IEC) provides detailed guidelines for



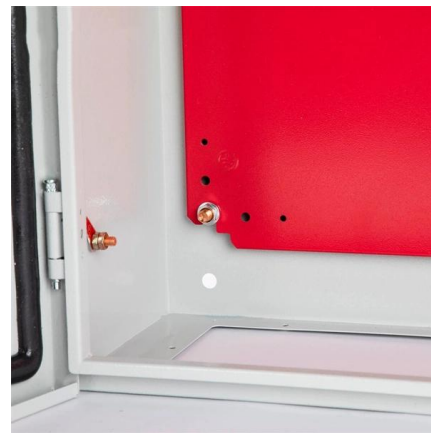


Free Cable Tray Fill Calculator , NEC & IEC Compliant Sizing , Shielden

Easily calculate cable tray fill ratios with our free tool. Supports mixed cable sizes, NEC 40% rules, and metric/imperial units. Download your PDF report instantly.

Cable Tray Technical Guide A practical guide to product selection and

In designing supports for a cable tray system, consideration should be given to the loads associated with future cable additions and any additional loading that may be applied to the cable tray system (e.g.,



Annex I

Example of a non-standard junction of cable trays, only in particular cases indicated in the cable trays manufacturing drawings, like Tokamak seismic isolation pit, or non-standard fittings.

B-Line series Cable Tray Design Considerations

For ladder or ventilated trough trays, the total sum of the cross-sectional areas of all the cables to be installed in the cable tray must be equal to or less than the allowable cable area for the tray width, as



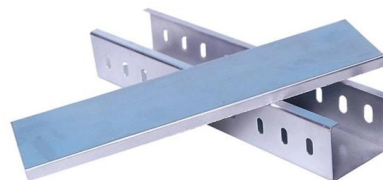
Cable Tray Design and Components Guide

This document provides information about cable trays and accessories, including straight cable trays, perforated trays, returned edge and flange types, and bent



Channel tray

T& B channel tray systems are fabricated from a corrosion-resistant metal (low-carbon steel, stainless steel or an aluminum alloy) or from a metal with a corrosion-resistant finish (zinc or epoxy). The



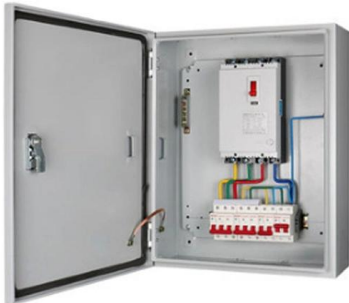
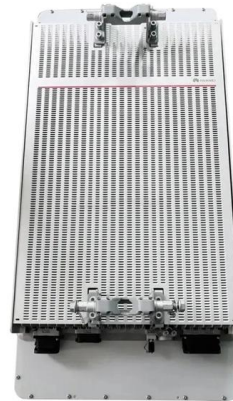
Cable Tray Sizing

Follow industry standards to select the appropriate cable tray dimensions. Avoid overloading and ensure proper spacing for heat dissipation. Conclusion: Choosing the Perfect Cable



Tray and Ladder Sizing by Cable Capacity Calculator - IEC

Calculate tray and ladder sizes by cable capacity with our IEC-compliant calculator for efficient and accurate electrical installations.



Cable tray manual

Nearly every aspect of cable tray design and installation has been explored for the use of the reader. If a topic has not been covered sufficiently to answer a specific question or if additional information is

TECHNICAL AND SIZING DATA

100% Canadian Owned, CSA and UL certified. Complete technical support and service for Unitray product lines. Custom sizing and non-standard tray lengths are available. Interchangeable with other



Best Practice Guide to Cable Ladder and Cable Tray Systems

This publication is intended as a practical guide for the proper and safe* installation of cable ladder systems, cable tray systems, channel support systems and associated supports.



Cable Tray Sizing Calculator , IEC 61537 & NEC 392 Guide

Use this cable tray sizing calculator to check fill %, select tray size, and comply with IEC 61537 & NEC 392 with formulas, example and checklist.



cable tray system

ADVANTAGES OF CABLE TRAYS cable tray systems are manufactured in accordance with the precise standards laid down by the National Electrical Manufacturers Association (NEMA).



Cable Tray Fill Calculator: Sizing for NEC/IEC

Ensure your cable runs meet NEC safety standards with our Cable Tray Fill Calculator. Calculate fill ratios for CAT6, Power, and Fiber cables to





Contact Us

For datasheets, pricing, or custom telecom energy solutions, please visit:
<https://www.koskolong.co.za>