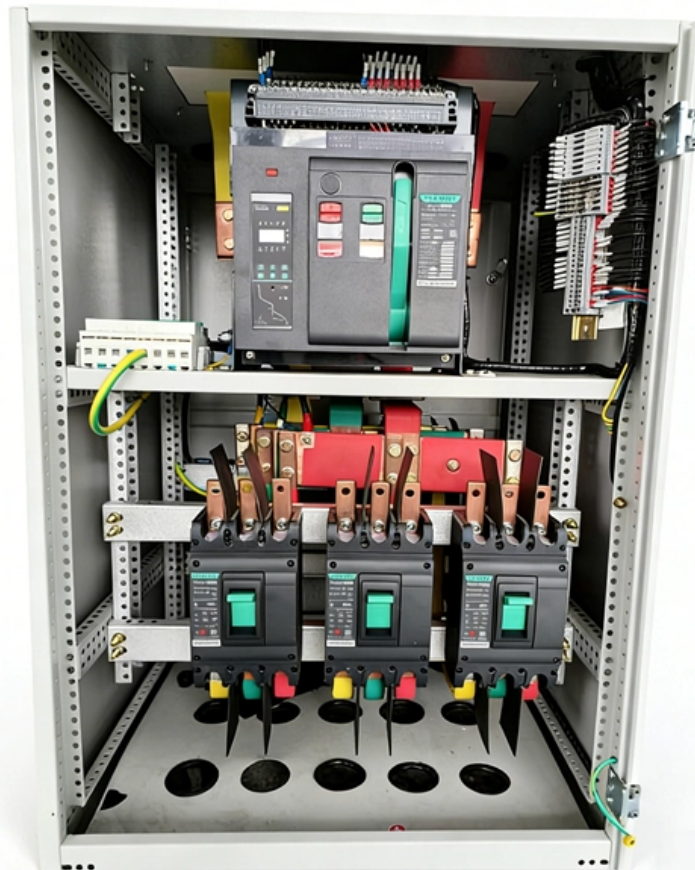




Adam Tas Corridor Energy

Standard Requirements for Welding Gaps in Distribution Boxes





Overview

This technical article provides a comprehensive review of minimum weld spacing requirements according to major international codes and standards. The analysis covers ASME, API, AWS, ISO, and EN standards with specific focus on pressure equipment, piping systems, and structural. Minimum weld spacing — the required distance between adjacent weld joints — is one of the most practically important yet frequently misunderstood requirements in pressure vessel, piping, and structural fabrication. In regulated industries, getting this wrong does not mean a minor non-conformance: Welding is a fundamental process in many industries like oil and gas, construction, manufacturing, shipbuilding, automotive, and aerospace. Extracts from these standards are shown below and summarised in the following table: See below for notes on attachment welds.



Standard Requirements for Welding Gaps in Distribution Boxes

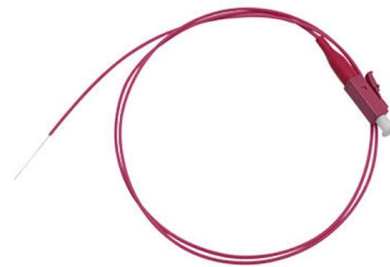


Weld Spacing: Minimum Distance Between Welds According to

This tutorial will guide you through standard-based minimum weld spacing requirements and provide general rules applicable in piping, pressure vessels, and tank structures.

Welding and protection requirements of distribution box

The welding and bolt connection of the distribution box shall be firm, and the weld joint shall be uniform, bright and clean, free of defects such as welding skin, weld through, air hole, etc.; the bolt connection



Minimum Distance Between Welds: Technical

This technical article provides a comprehensive review of minimum weld spacing requirements according to major international codes and standards.

Minimum Distance Between Welds as per International

Various organizations and standards bodies have developed guidelines for welding practices,



including the minimum distance between welds.
The minimum distance



Piping arrangement, gap, space, and layouts - AMARINE

Piping arrangement on racks The ASME B31.3 standard, which is used for industrial piping design in the oil, gas, petrochemical, and related industries,

Grounding System Installation Standards for Distribution Boxes and

Hey there! If you're working with electrical systems, you know that grounding isn't just some bureaucratic requirement--it's literally the difference between a safe, functional system and a potential disaster.



ASTM International , ASTM

Over 13,000 ASTM standards operate globally. Defined and set by us, they improve the lives of millions every day. ASTM provides the standards and solutions you



Why is the welding process of metal distribution boxes extremely

I. Welding: A "Problem" Easily Overlooked in the Manufacturing of Distribution Boxes In the manufacturing process of metal distribution boxes, welding constitutes a critical stage following sheet



Applicable Codes and Standards for Welding of Piping

Applicable Codes and Standards for Welding of Piping Systems All welding work, equipments for welding, heat treatment, other auxiliary functions and the welding

Standard Welding Procedure Specifications (SWPS) , Guidelines for

Explore guidelines, procedures, and best practices for achieving welding excellence through SWPS documents.



16132 Pull and Junction Boxes

Indoor pull and junction boxes shall conform to Article 370 of the NEC and the following requirements: Sheet metal boxes are approved for use in all dry, interior, nonhazardous locations.



Design and Inspection Guide to Minimum Weld Spacing

Complete guide to minimum weld spacing per ASME, API, BS, and ISO codes. Includes a free weld spacing calculator, HAZ overlap explained, code

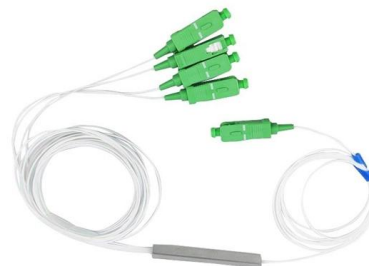


What are the standard requirements on the proximity of

Summary of the requirements on the proximity of welds from various international standards, including rules-of-thumb.

Minimum Distance Between Welds as per International

European Welding Federation (EWF) and International Institute of Welding (IIW): The minimum distance between welds should be at least three times the thickness of



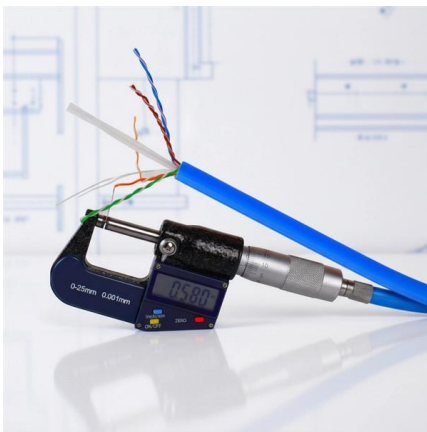


How Big a Gap Can You Weld? Explore the Limitations

A welding gap is the space between two pieces of metal that you plan to join. It can vary in size, and knowing how to handle it is key to a strong weld. It's a

Structural Welding Code -- Steel

The welding terms used in this code shall be interpreted in conformance with the definitions given in the latest edition of AWS A3.0, Standard Welding Terms and Definitions, Including Terms for Adhesive



Technical Requirements for Distribution Box in Electrical Industry

Different industries, different products have different technical requirements, in the electrical industry, distribution boxes, distribution boxes are no exception, distribution boxes, distribution boxes are also

Description and application guidelines Roxtec welding guidelines

Roxtec frames manufactured in mild steel and stainless steel are welded according to EN-ISO 5817 Min Class C. Aluminum frames are welded according to EN-ISO 10042 Min Class C.



Welding, Cutting, and Brazing

See a complete listing of all State Plans. State Plans are required to have standards and enforcement programs that are at least as effective as OSHA's and may have different or more stringent



Applicable Codes and Standards for Welding of Piping

All welding work, equipments for welding, heat treatment, other auxiliary functions and the welding personnel shall meet the requirements of the latest editions of



MTP MPO SC-Type Fiber Adapter



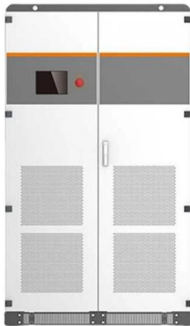
Weld Spacing: Minimum Distance Between Welds According to Standards

In welding design, the minimum distance between welds is a crucial parameter affecting the integrity, inspectability, and performance of welded structures. Improper spacing can lead to:



The installation requirements for the distribution box

Learn how to install a distribution box safely and correctly. Covers wiring, placement, standards, and expert tips for a compliant setup.



Minimum Distance Between Welds: Essential 5 Tips For

Different standards specify these distances to ensure weld strength, safety, and quality. Here's a detailed guide covering various welding standards

Brief introduction distribution box welding common sense and

The welding and bolt connection of the distribution box made by the distribution box manufacturer shall be firm, and the welding seam shall be uniform and smooth, without welding skin, welding



Contact Us

For datasheets, pricing, or custom telecom energy solutions, please visit:
<https://www.koskolong.co.za>