



**Adam Tas Corridor Energy**

# **Standard Wiring Method for Single-Line Distribution Boxes on Construction Sites**





## Overview

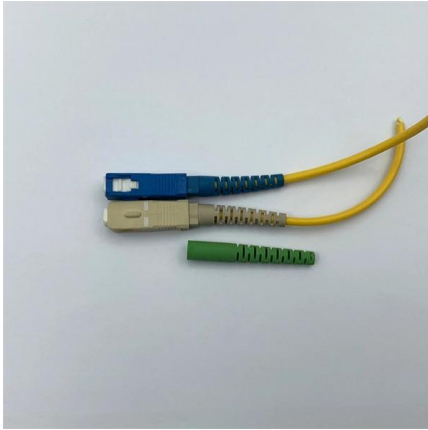
---

This fact sheet explains how to apply the requirements shown in AS/NZS 3012:2019 Electrical installations - construction and demolition sites (AS/NZS 3012:2019), which is called up as a mandatory standard by section 163 of the Work Health and Safety Regulation 2025 (WHS Regulation). SRP ENCOURAGES EACH USER TO CONSULT WITH ITS OWN TECHNICAL ADVISOR CONCERNING THE APPLICABILITY OF THESE STANDARDS TO THE USER'S SPECIFIC SITUATION. However, exposure to weather, frequent relocation, rough use and other conditions not normally encountered with conventional wiring systems necessitate special consideration not required in other applications or in completed structures. The European Committee for Electrotechnical Standardization (CENELEC) was set up in 1973. Presently it comprises 22 countries (Austria, Belgium, Czech Republic, Denmark, Finland, France, Germany, Greece, Hungary, Iceland, Ireland, Italy, Luxembourg, Malta, Netherlands, Norway, Portugal, Slovakia. Low-voltage distribution lines refer to the circuits that, through a distribution transformer, step down the high voltage of 10 kV to the 380/220 V level—i. Overhead Electric Distribution Standards Revised: January 1, 2018 Revised By: HTH Approved By: BTM SUMMARY OF CHANGES Page 1 of 2 SUMMARY OF CHANGES January 1, 2021 OH-II-1 Miscellaneous Adders and Removal Plates 1.



## Standard Wiring Method for Single-Line Distribution Boxes on Construction Sites

---



### Electrical installation handbook

To define the current carrying capacity of the conductor and therefore to identify the correct cross section for the load current, the standardized method of installation that better suits the actual

### Overhead Distribution Construction Standards

UTILIZING SRP STANDARDS WHEN UTILIZING SRP'S STANDARDS IN DESIGN PROJECTS, MODIFICATION OF SAID STANDARDS IS NOT PERMITTED. DETAILS OR IMAGES MAY BE



### Industry standard Electrical installations on construction sites

The information presented in the Industry Standard - Electrical installations on construction sites is intended for general use only. It should not be viewed as a definitive guide to the law, and should be



### Requirements And Specifications For Installation Of

The installation requirements and specifications of Distribution box involve many aspects,



including site selection, fixing method, wiring specifications



### Grounding System Installation Standards for Distribution Boxes and

Hey there! If you're working with electrical systems, you know that grounding isn't just some bureaucratic requirement--it's literally the difference between a safe, functional system and a potential disaster.



### Simplified wiring diagram for a single phase breaker box

The wiring diagram for a single-phase breaker box shows how the electrical connections are made between the different components. It provides an



### Microsoft Word

WIRING STANDARD BOXES AND CABINETS The wiring must be performed using flexible T wires with end fittings arranged in ducts made from an insulating material with a cover (wiring ducts).



## 1. Electrical Single Line Diagram Guidance

The single-line diagram is the blueprint for electrical system analysis. It is the first step in preparing a critical response plan, allowing you to become thoroughly familiar with the electrical distribution



### Low-Voltage Distribution Lines and Power Distribution

Guidelines for safe low-voltage power distribution on construction sites: wiring methods, clearance rules, and mobile/fixed distribution boards.

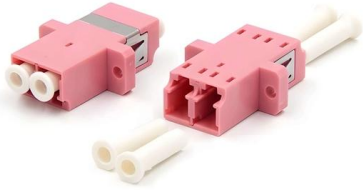
### Single Phase Electrical Wiring Installation in Home -

Single Phase 120V/230V Distribution and Panel Board Wiring in Home Single Phase wiring installation is the most common wiring in residential buildings. In Single



### Understanding Circuit Breaker Wiring Configurations in

Correct wiring methods for circuit breakers within distribution boxes are fundamental to ensuring electrical safety and compliance with established codes.



### Temporary electrical wiring for construction sites

All 120-volt, single-phase, 15- and 20-ampere receptacles shall be of the grounding type and their contacts shall be grounded by connection to the equipment grounding conductor of the circuit

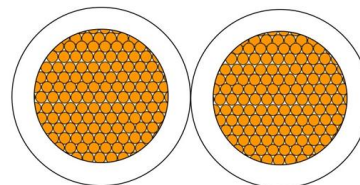


### OVERHEAD ELECTRIC DISTRIBUTION CONSTRUCTION

This adder is appropriate where line rubber is removed which was specifically installed for the protection of a contractor working near JEA distribution lines that are energized.

### The installation requirements for the distribution box

Learn how to install a distribution box safely and correctly. Covers wiring, placement, standards, and expert tips for a compliant setup.





## Temporary electrical wiring for construction sites



Temporary for construction Construction work requires electrical power for many purposes. However, exposure to weather, frequent relocation, rough use and other conditions not normally encountered

## The Meaning and Function of Primary, Secondary, and Tertiary

Secondary Distribution Box: Also designed for construction sites, meeting specific on-site electrical standards. Forms part of the three-level protection system. Features inner and outer doors,



## Electrical practices -- construction and demolition sites

The standard sets out minimum requirements for the design, construction and testing of electrical installations that supply electricity to appliances and equipment on

## Single Phase Distribution Box Wiring Diagram for

In the following single phase electrical wiring for home supply, We used 63A MCB (DP), 63A RCD (DP) and different rating if MCBs (SP) such as 20A, 16A, 10A etc



## Quality Control for Installation and Construction of Electrical Riser

Master the key quality control methods for electrical riser & distribution box installation. Ensure safety, compliance, and prevent hazards in building electrical systems.



## The Ultimate Guide to Circuit Breaker Wiring

Master the safest and most efficient circuit breaker wiring configurations. Learn about single-phase vs. three-phase setups, safety standards, and future-proof electrical



## How to wire a single phase DIN rail distribution board

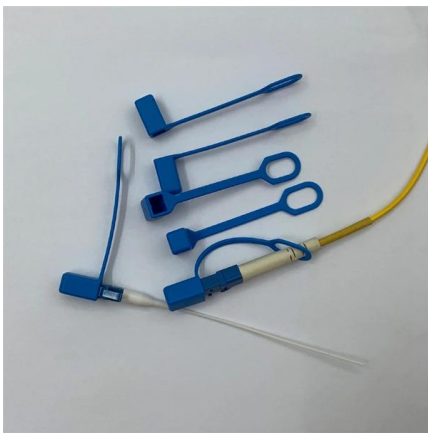
How to wire a DIN rail distribution board - practical demonstration (South Africa). This is a lab setup for the practical demonstration of wiring a distribution board with several loads - lights





## Requirements for Electrical Installations

This installation has wiring colours to two versions of BS 7671. Great care should be taken before undertaking extension, alteration or repair that all conductors are correctly identified.



## Structured Wiring for New Construction Homes

Structured wiring is both a physical product and also a process. Often times it is also referred to as a Cable distribution box. In both definitions its typically localized in

## Electrical practices -- construction and demolition sites

All construction wiring (both on construction and demolition sites), switchboards and transportable structures must be inspected and tested in accordance with



## 1926.405

1926 Subpart K Subpart Title: Electrical Standard Number: 1926.405 Title: Wiring methods, components, and equipment for general use.



## Contact Us

---

For datasheets, pricing, or custom telecom energy solutions, please visit:  
<https://www.koskolong.co.za>