



Adam Tas Corridor Energy

Standard for Grounding Wire of Construction Site Distribution Box



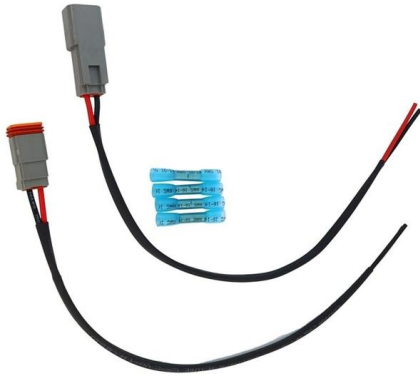


Overview

26 mm² (10 AWG) ground wire must be used, and in all other markets a 6 mm² must be used. Grounding of the units: y information developed by and for exclusive use of Saudi Electricity Company (SEC) Distribution Network. Your acceptance of the document is an acknowledgment that it must be used for the identified purpose/application and during the period indicated. Contact Surface Treatment: Coatings or oxide layers should be removed from the connection area to expose the natural metal and reduce contact resistance. Whether you're a seasoned pro or just starting out, this comprehensive guide will give you practical insights into proper grounding techniques, with a special focus on how selecting quality materials from a reliable building material supplier impacts your entire system's safety and longevity. 7 Provide conduit grounding bushings, bonded together and connected to the equipment enclosure on all incoming and outgoing conduits on distribution switchgear and switchboards, distribution panels and on all conduits over 1-1/4" diameter at all panelboards, pull boxes and equipment.



Standard for Grounding Wire of Construction Site Distribution Box

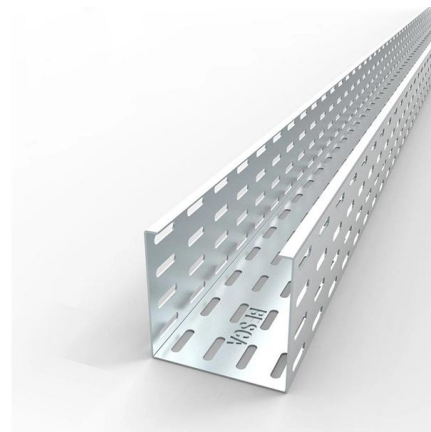


GROUND GRID SPECIFICATIONS

Each Power Circuit Breaker or Power Transformer having a bushing Voltage Transformer on the tank shall have the Voltage Transformer provided with a separate ground lead, independent of the

Requirements for distribution box at construction site

2? The rated value and action setting value of the main distribution box shall be compatible with the rated value and action setting value of the branch switch. 3? The electrical components and leakage



26 05 26 GROUNDING AND BONDING FOR ELECTRICAL SYSTEMS

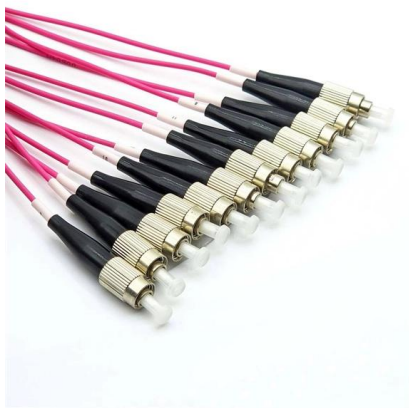
Bond all communications conduit systems to ground. 3.3 In addition to using the conduit system for grounding, a complete auxiliary green wire equipment grounding system shall be

Key Points Of Installation And Collocation Of Distribution Box In

The power distribution system at the construction site shall be distributed in different



levels. The main distribution box (or distribution room) shall be set up.



UNDERGROUND ELECTRIC DISTRIBUTION CONSTRUCTION STANDARDS

Any borings and sub-surface data including ground water elevations, underground utility and structural locations that may be furnished or indicated on the plans are presented only as information that is

SDCS-03 DISTRIBUTION NETWORK GROUNDING

Every pole with MV equipment installation shall be grounded with minimum of 4 ground rods. In high soil resistivity areas, such as rocky areas, loose soil, etc.; additional number of rods or equivalent length



GROUNDING AND BONDING FOR ELECTRICAL SYSTEMS

Connect the conductor from the panel ground bus or connector at the source to all items to which the conduits or raceways connect. Bond to a ground lug within each panel, box or equipment.





Grounding System Installation Standards for Distribution Boxes and

Whether you're a seasoned pro or just starting out, this comprehensive guide will give you practical insights into proper grounding techniques, with a special focus on how selecting quality materials



DUKE UNIVERSITY CONSTRUCTION STANDARDS 1

Grounding bus bars mounted exterior to electrical distribution equipment shall be provided with insulated standoffs. All service entrances shall be solidly grounded using a grounding electrode system



GROUND GRID SPECIFICATIONS

PURPOSE AND SCOPE IPMENT, STRUCTURES, ETC. IN ELECTRICAL STATIONS INCLUDING TRANSMISSION AND DISTRIBUTION SUBSTAT GROUNDING OF NON-CURRENT CARRYING

SECTION 260526

Section includes grounding systems and equipment, plus the following special applications: Underground distribution grounding.



Grounding & Bonding-Temporary Power Generation and Electrical Distribution

Often installation of power generation and temporary power distribution equipment (Figure 1) on construction sites, industrial facilities and special event venues are viewed by

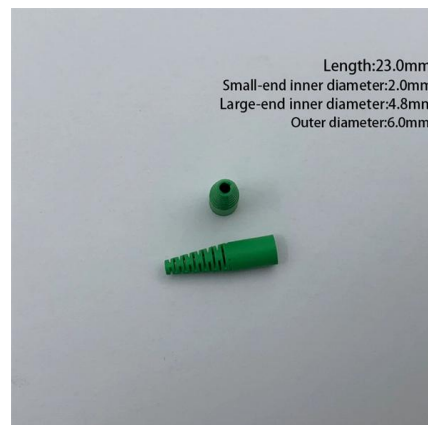


9 Recommended Practices for Grounding

The minimum size the equipment grounding conductor for safety is provided in NEC 250.122, but a full-size grounding conductor is recommended for

Construction Guidelines For Grounding Systems Of Stainless Steel

During the manufacturing process, metal enclosures typically have fixed points welded to the base plate or side walls. This design aims to provide a stable physical anchor point for the yellow-green





DISTRIBUTION BOX

Each DISTRIBUTION BOX and controller must be grounded. On the US market, a 5.26 mm² (10 AWG) ground wire must be used, and in all other markets a 6 mm² must be used.

Temporary electrical wiring for construction sites

All 120-volt, single-phase, 15- and 20-ampere receptacles shall be of the grounding type and their contacts shall be grounded by connection to the equipment grounding conductor of the circuit



Requirements And Specifications For Installation Of

In flammable and explosive environments, explosion-proof distribution boxes should be selected and explosion-proof treatment should be carried out.

Microsoft Word

1.1 Scope: This Grounding Standard describes factors affecting the ground resistance and the method of measuring ground resistance of Distribution installations.



Critical Infrastructure Grounding Guide

BURNDY® HYGROUND® Compression Grounding is a safe, cost-effective, and consistent grounding system that can be installed in all weather conditions. Compression connectors are part of a



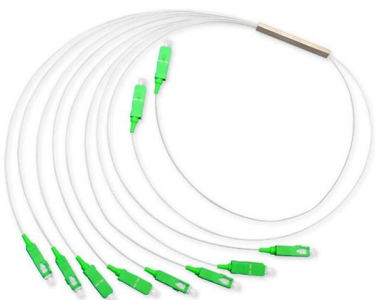
Does the Distribution Box Door Need Grounding? Safety Standards FAQ

Hey there! If you've ever found yourself scratching your head over whether that metal door on your distribution cabinet really needs a grounding wire, you're not alone. In factories, construction sites,



The installation requirements for the distribution box

Learn how to install a distribution box safely and correctly. Covers wiring, placement, standards, and expert tips for a compliant setup.





The Basics of Grounding and Bonding

Article 250 of the NEC covers the grounding and bonding of electrical systems. By definition, as well as by function, grounding and bonding are not the same thing.



DISTRIBUTION BOX

Each DISTRIBUTION BOX and controller must be grounded. On the US market, a 5.26 mm² (10 AWG) ground wire must be used, and in all other markets a 6 mm² must be used.



26 05 26 Grounding and Bonding Electrical Systems_06_15_16

Ground all equipment with insulated ground wires run in conduit with circuit conductors. Construct metal raceway systems to create an independent and redundant ground path bonded to the ground wire at



Grounding

Connect the ground rods with a No. 4/0 AWG bare, stranded copper ground wire loop. Pigtails from the ground wire loop shall be used to ground the manhole cover frame, ladder, concrete inserts or cable



Contact Us

For datasheets, pricing, or custom telecom energy solutions, please visit:
<https://www.koskolong.co.za>