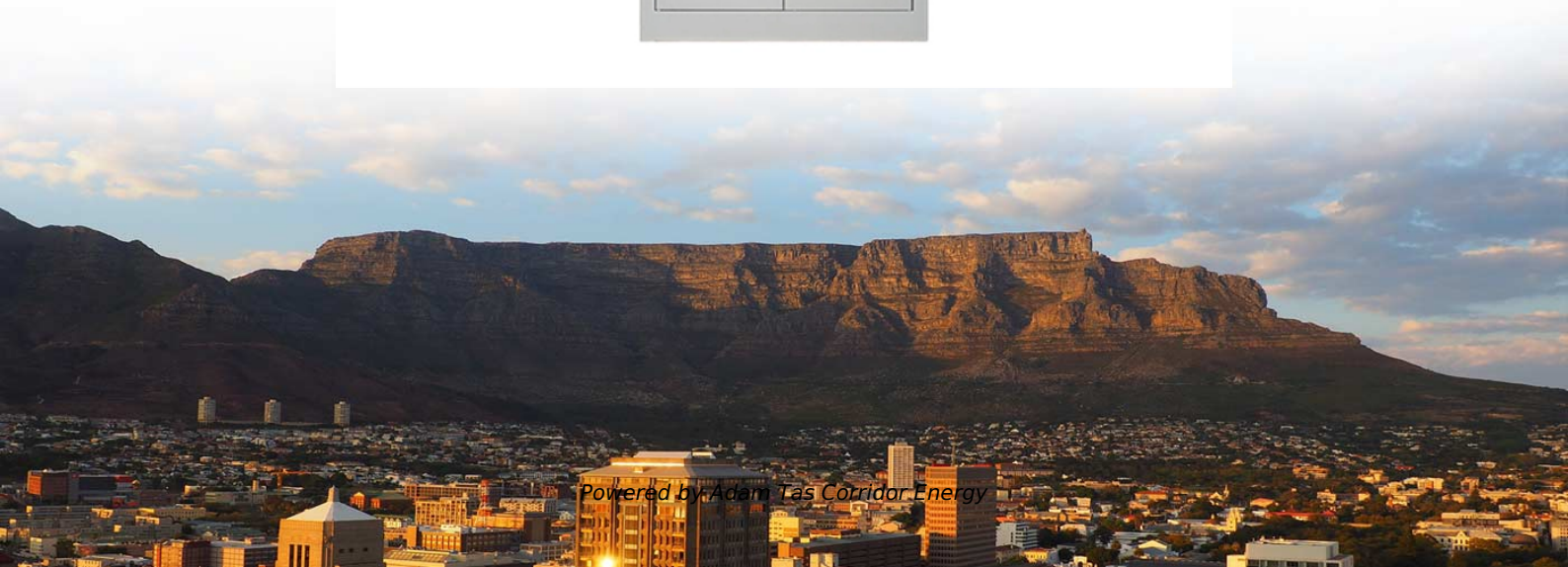




Adam Tas Corridor Energy

Standard for accessories of level 3 electrical distribution box





Standard for accessories of level 3 electrical distribution box

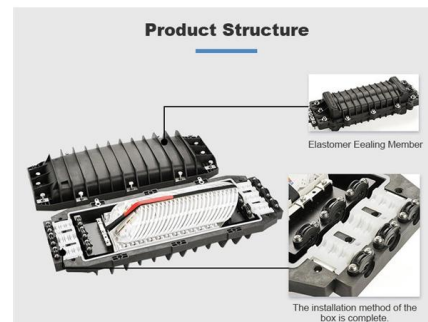


Understanding Distribution Boxes: A Comprehensive Guide

A distribution box, also known as a power distribution box or electrical distribution box, is used to distribute electrical power safely to multiple

Guide_Normes_IEC 61439_GB dd

This standard aims to standardize all the rules and requirements applicable to the low voltage switchgear and controlgear assemblies (Assemblies) in order to make the requirements and checks



The Meaning and Function of Primary, Secondary, and Tertiary

Secondary Distribution Box: Also designed for construction sites, meeting specific on-site electrical standards. Forms part of the three-level protection system. Features inner and outer doors,

DISTRIBUTION BOARDS CATALOG

Unique box wrapper profile developed using latest technologies and simulation software ensures the strongest resistance to high crushing



forces. This profile helps in preventing the twisting of the box



What Is an Electrical Distribution Box? A Complete Guide

An electrical distribution box is a centralized unit responsible for distributing electrical power across multiple circuits within various environments, including residential,

Guide to Commercial Installations Distribution Boards & Panelboards

If equipment has a foreign standard based on an IEC standard then the designer or specifier must confirm that any differences will not result in reduced safety.



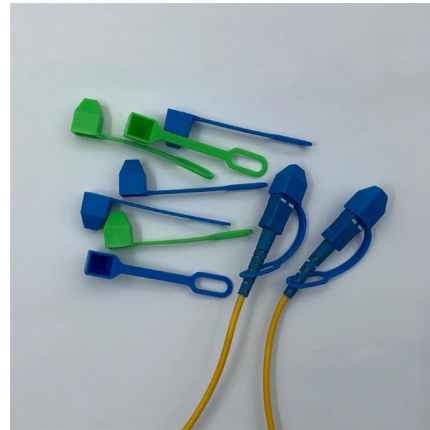
IEC / BS 7671 Codes for Consumer Unit and Distribution

All the protective devices used in the consumer unit for residential and distribution board for commercial and industrial application must be verified by BS EN 61439



Distribution switchboards

Distribution switchboards, including the Main LV Switchboard (MLVS), are critical to the dependability of an electrical installation. They must comply with well-defined standards governing



Cautions and Requirements for Installation of

Distribution box is a low-voltage distribution device which assembles switchgear, measuring instruments, protective appliances and auxiliary equipment in a closed

Outdoor Electrical Distribution Box Specifications: NEC

Complete specification guide for outdoor electrical distribution boxes covering NEC Article 312 requirements, NEMA ratings, sizing calculations, and



Distribution Box - Astryd Power Pvt. Ltd.

A distribution box is an essential component in electrical systems, serving as the central point for distributing electricity to various circuits, appliances, and devices within a building or facility. Its



- ✓ 50KW/100KWH
- ✓ HIGHER POWER OUTPUT IN OFF-GRID MODE
- ✓ CONVENIENT OPERATION & MAINTENANCE
- ✓ PRE-WIRED

Size determination, installation method and wiring mode

The distribution box is the central hub of the home circuit and the general control of our daily power consumption. It is an indispensable electrical equipment. If there



How to Install a Cable Distribution Box Safely and

Chuanli provides a full range of cable distribution box products covering different application scenarios, all of which comply with international

IS 14772 (2000): General Requirements for Enclosures for

IS 14772 (2000): General Requirements for Enclosures for Accessories for Household and Similar Fixed Electrical Installations (Superseding IS 5133 (part 1 and 2) [ETD 14: Electrical Wiring Accessories])



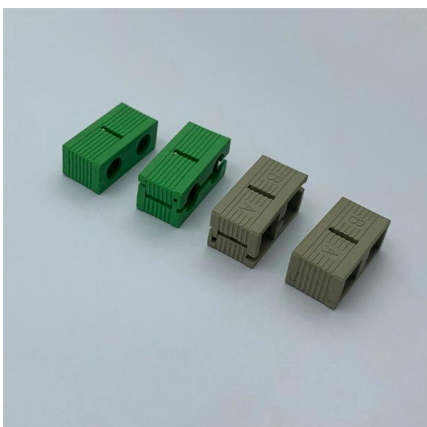
Power Distribution Equipment

Each has its own unique standards and application guidelines, and one facet of good power system design is the knowledge of when to apply each type of equipment and the limitations of each type of



The installation requirements for the distribution box

Learn how to install a distribution box safely and correctly. Covers wiring, placement, standards, and expert tips for a compliant setup. A distribution



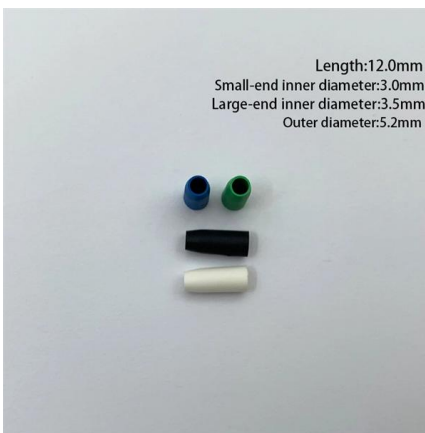
Essential Rules for 3-Level Electrical Distribution

Follow key principles: no cross-level wiring, one machine-one switch, $\leq 30m$ box spacing, dry/ventilated installation for safe distribution.



Electrical installation handbook

In particular, it is applicable to any apparatus used for production, conversion, transmission, distribution and use of electrical power, such as machines, transformers, devices, measuring instruments,



Quality Control for Installation and Construction of Electrical Riser

Master the key quality control methods for electrical riser & distribution box installation. Ensure safety, compliance, and prevent hazards in building electrical systems.

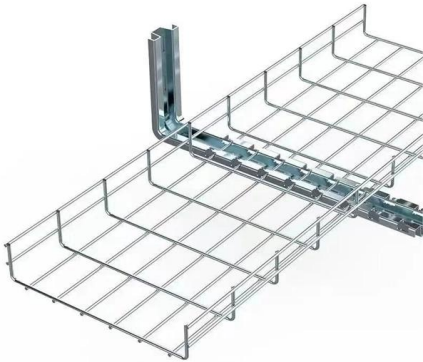
56-SDMS-07

This document contains proprietary information developed by and for exclusive use of Saudi Electricity Company (SEC) Distribution Network. Your acceptance of the document is an acknowledgment that



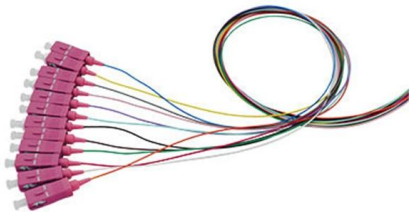
DISTRIBUTION BOARDS CATALOG

Table (1) ITEM DESCRIPTION Standard IEC61439-1& 3 Busbar Rating (AFW) 100, 250 No of Phase 3 Voltage Rating (V)-AC (50/60 Hz) 110-415 Mounting Type Flush No. of Ways (3 Phase) 6, 9, 12, 18,



TECHNICAL SPECIFICATION FOR

The electrical station services shall be in accordance with all the relevant standards, shall satisfy the requirements specified herein and shall be designed to operate in the environmental conditions



Key Points Of Installation And Collocation Of Distribution Box In

1. The power distribution system at the construction site shall be distributed in different levels. The main distribution box (or distribution room) shall be set up. The distribution box shall be set below the main

Arrangements of LV Utility Distribution Networks (1)

Introduction In European countries the standard 3-phase 4-wire distribution voltage level is 230/400 V. Many countries are currently converting





Industrial 3 Phase Electrical Distribution Box Guide

Explore the essentials of industrial 3 Phase Electrical Distribution Box for efficient power management in commercial settings. Get expert insights now.

Requirements And Specifications For Installation Of

In flammable and explosive environments, explosion-proof distribution boxes should be selected and explosion-proof treatment should be carried out.



IEC 61439-3:2024

This part of IEC 61439 defines the specific requirements for distribution boards intended to be operated by ordinary persons (abbreviated DBO throughout this document, see 3.1.101) as follows:

Maharashtra State Electricity Distribution Company Limited

Standard General Arrangement of Isolators, HRC fuse base with links, MCCBs, Link Disconnecter, Neutral Links, Bus Bars, connecting links, Cable termination arrangement etc inside the Box is



Contact Us

For datasheets, pricing, or custom telecom energy solutions, please visit:
<https://www.koskolong.co.za>