



Adam Tas Corridor Energy

Standard representation of optical cable splice attenuation value





Standard representation of optical cable splice attenuation value

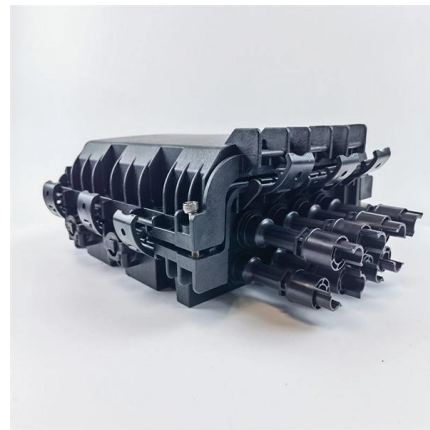


Calculating Loss Budget: What it Means and How to

Upon closer inspection, this "value proposition" doesn't hold much value at all. The same idea holds true with cable insertion loss. You can select a

Guidelines Corning Recommended Fiber Optic Test

important. The OTDR trace can be used for cable acceptance, splice and connector loss, documentation, troubleshooting, fault location, optical return loss, and to measure the length of PM



What is Optical Fibre Splice Loss?

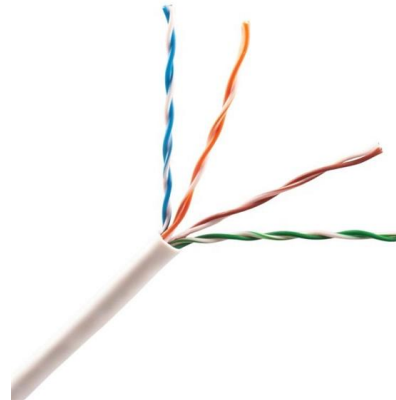
The portion of the optical power that does not pass through the splice and is radiated out of the fibre is referred to as splice loss. Learn about Optical

Multimode Splice Loss

Typical splice loss values (the measure of loss in optical power across the splice point) are usually lower for fusion splices (typically less than 0.1



dB) than for mechanical splices (around 0.2 dB).

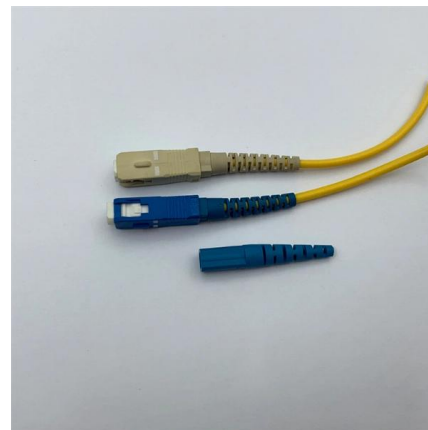


Optical Fiber and Cable Characteristics

The attenuation values in the 1270 nm and 1350 nm windows were calculated using spectral attenuation modelling method (5.4.4) included in G.650.1 and the matrix coefficients included in Appendix III

Fibre Optic Cabling Loss Limits Explained - Trend

Using an optical power meter and light source or OLTS (Optical Loss Test Set), Tier 1 Certification can be performed against industry standard limits



Optical Fibre Splice Loss

To build a network with optical fibres, one may eventually join two fibre ends with a connector or fusion splicer. The amount of optical power lost at these connections is a concern for many system



Attenuation In Optical Fiber, How to Calculate Fiber Loss?

EIA / TIA standard specifies that the maximum attenuation is one of the most important parameters in optical fiber loss measurement. In fact, the maximum attenuation is the attenuation



Determining optical fiber link loss

An optical fiber cable run has been installed between two buildings, with a splice point in the middle linking a third building. It is now time to certify the link with a

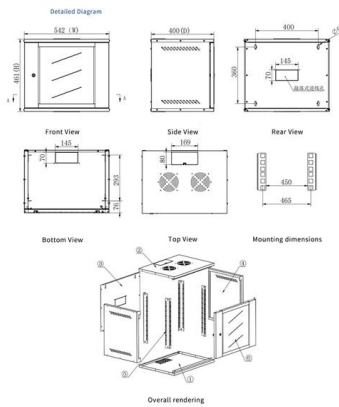
Guidelines On What Loss To Expect When Testing

Some standards refer to the loss budget as the "attenuation allowance" but there seems to be very limited use of that term. The calculated loss budget is an



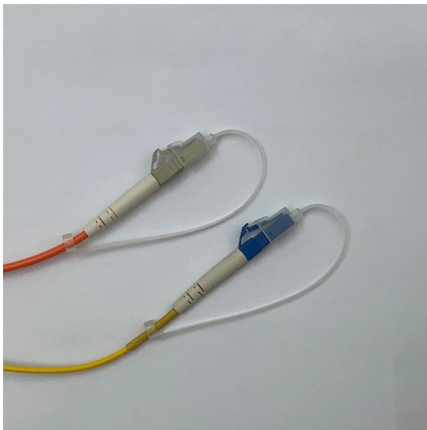
FS Community

Hier sollte eine Beschreibung angezeigt werden, diese Seite lässt dies jedoch nicht zu.



Calculating Fiber Loss and Distance Estimates

Estimate the total link loss across an existing fiber optic link if the fiber length and loss variables are known Estimate the maximum fiber distance if optical budget



ITU-T Rec. L.12 (03/2008) Optical fibre splices

Summary Splices are critical points in the optical fibre network, as they strongly affect not only the quality of the links, but also their lifetime. In fact, the splice shall ensure high quality and stability of

The FOA Reference For Fiber Optics

The Optical Time Domain Reflectometer (OTDR) is useful for testing the integrity of fiber optic cables. It can verify splice loss, measure length and find faults.





Optical Fiber Link Performance Testing , PDF

It defines an optical fiber link segment and recommends maximum link attenuation values based on fiber type, wavelength, distance and number of splices. For

7. Splice Measurement and Characterization

The choice of measurement technology depends upon the type of fusion splice. Sophisticated measurements for understanding fusion splice loss, such as spatially-resolved index profiling or

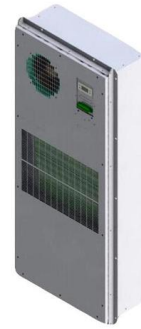


Fiber Attenuation Coefficient

The fiber splices can be fused or joined together by some mechanical means, with typical attenuation being 0.01-0.1 dB per fused splice and slightly above 0.1 dB per mechanical splice.

How Many Fiber Connections Are Too Many:

They specify performance and transmission requirements for fiber optic cables, connectors, etc. The attenuation coefficient of fiber optic cable is



Understanding Fiber Loss: What Is It and How to

The maximum attenuation is actually the attenuation coefficient of fiber optic cable, which is expressed in dB/km units. It is one of the most



The FOA Reference For Fiber Optics

This is similar to the single-ended loss measurement of terminated cables, but uses the splice instead of connectors at the source end and a bare fiber adapter to



Fiber Optic Attenuation Calculator , Fiberopticx

This calculator helps you estimate the total attenuation (signal loss) in a fiber optic cable link. Here are the details and instructions about each field and how they contribute to the calculation:



Optical Fiber and Cable Characteristics

In Table 2 (G.652.D) text has been added and renewed concerning attenuation coefficient at 1383 nm. In Table 2 (G.652.D) the attenuation specifications have been edited to two decimal places.



Fiber Optic Cabling Loss Limits Explained - Trend

Using an optical power meter and light source or OLTS (Optical Loss Test Set), Tier 1 Certification can be performed against industry standard limits

Optical Fiber Connectors, Splices, and Jointing Technology

The optical source, the number of joints and their location along the fiber, and the mode-mixing properties and differential mode attenuation of the particular fibers all play an important role in the



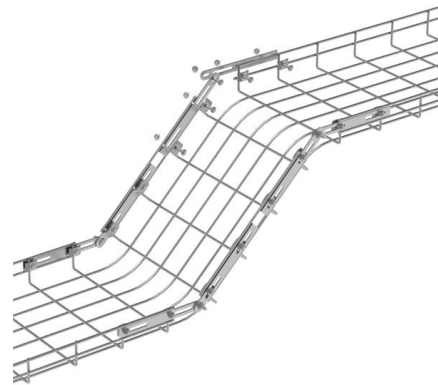
Assessment of fiber cable quality: Attenuation and

IEC standards clearly specify the criteria for assessing the quality of fiber optic cables: the increase in attenuation of the optical fiber and the relative



What Should Attenuation Values at the Splice Points Be In Fiber-Optic

What should attenuation values at the splice points be in fiber-optic cables? ANSWER: A good splice should have an attenuation of less than 0.3 dB over the entire distance. Many factors



Understanding Fiber Loss: What Is It and How to Calculate It?

Telecommunications Industry Association (TIA)/Electronic Industries Alliance (EIA) develops TIA/EIA standards, which specify performance and transmission requirements for fiber

Attenuation In Optical Fibers And Calculation

As the distance light travels through an optical fiber increases, the light's strength decreases; this is called fiber attenuation or fiber loss.





Introduction to Optical Fibers, dB, Attenuation and Measurements

This document is a quick reference to some of the formulas and important information related to optical technologies. This document focuses on decibels (dB), decibels per milliwatt (dBm),

Contact Us

For datasheets, pricing, or custom telecom energy solutions, please visit:
<https://www.koskolong.co.za>