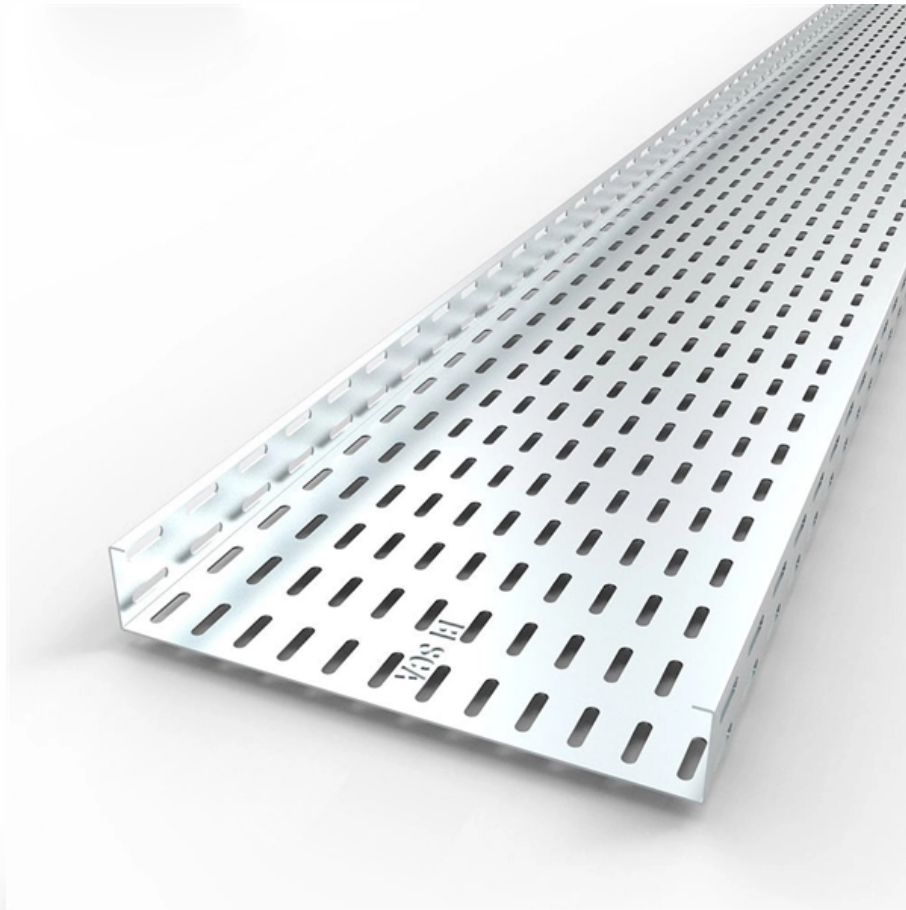




Adam Tas Corridor Energy

Standards for the Placement of Mobile Power Distribution Boxes on Construction Sites





Overview

Construction site temporary installations must use 110V CTE for portable tools, IP-rated distribution boards, 30 mA RCD protection on every circuit, and quarterly EICR inspections. This guidance is aimed at those responsible for planning and subsequent management, and those who control the installation and use of electrical systems and equipment on construction sites. Order this product from HSE Books It explains what to do to reduce the risk of accidents involving. However, exposure to weather, frequent relocation, rough use and other conditions not normally encountered with conventional wiring systems necessitate special consideration not required in other applications or in completed structures. © NECA 200-2016 Standard for Installing and Maintaining Temporary Electric Power at Construction Sites AN AM ERIC AN N DOWNLOAD FILE NOTICE OF COPYRIGHT This document is copyrighted by NECA ISBN: 978-1-944148-10-2 ©2016. Whether in a home or an industrial facility, this box keeps your electrical setup organized, functional, and efficient. These regulations place a requirement on every employer to assess every work activity in order to identify any hazard that employees or any other person might encounter as a result of the work being carried out.



Standards for the Placement of Mobile Power Distribution Boxes on

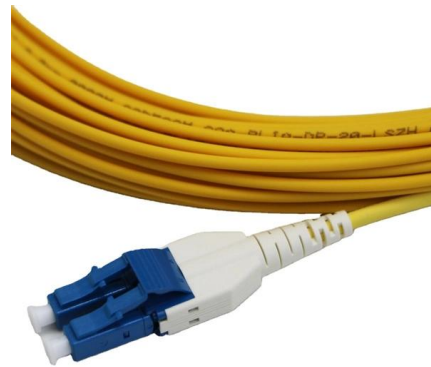


Temporary electrical installations on construction and

Electrical site distribution equipment All units for the distribution of electricity are to comply with BS 4363 Specification for distribution assemblies for

The installation requirements for the distribution box

Learn how to install a distribution box safely and correctly. Covers wiring, placement, standards, and expert tips for a compliant setup.



Safety requirements of distribution box

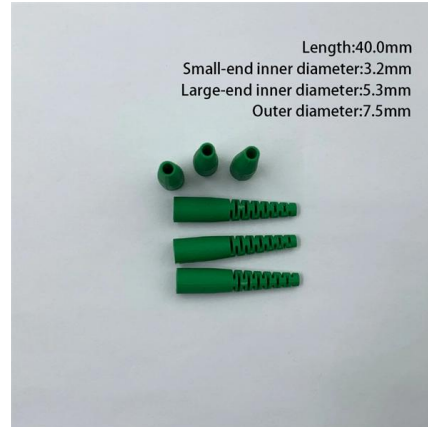
The distribution box has the characteristics of small size, simple installation, special technical performance, fixed location, unique configuration function, not limited by

Temporary electrical installations on construction and

Every year, the use of electricity on construction sites results in accidents from electric shock and



burns which can be serious or even fatal. This

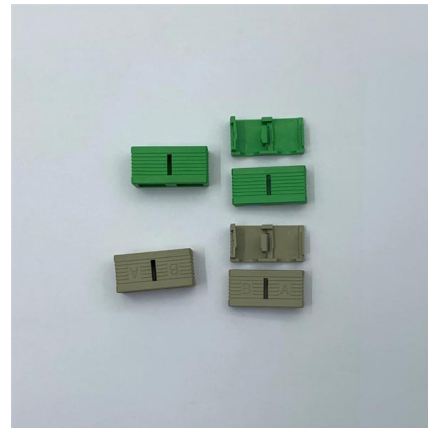


The Ultimate Guide to Temporary Power Distribution Boxes

Temporary Power Distribution Box Temporary power distribution boxes play a crucial role in ensuring that electrical power is safely and efficiently

How To Get Temporary Power for Your Construction

Temporary Power Box A temporary power box, also known as a power spider box, is a portable electrical enclosure that provides temporary electrical



NECA 200-2016-Standard-for-Installing-and-Maintaining-Temporary

When planning the temporary power installation, consider construction phasing requirements to ensure adequate, convenient, and serviceable power supply throughout construction.



Temporary Electrical Supply HSE Procedure For

Below procedure will help you to establish a safe standard for the installation of temporary and permanent electrical fixtures/appliances on project sites.



Top Necessities For Proper Construction Site Power

Learn the top necessities for proper construction site power distribution, ensuring safety and compliance with NEC standards. Keep your job

Temporary Power Construction Site Guide: Industrial Plug Sockets,

Discover how to supply temporary power safely on construction sites using E-abel distribution boxes, industrial plug sockets, and IP67 connectors for reliable outdoor electricity.



Summary of key points for construction and installation of distribution

The construction and installation points of distribution boxes and switch boxes are summarized as follows: 1. Select qualified products that meet national standards and safety requirements.



Requirements for distribution box at construction site

2? The rated value and action setting value of the main distribution box shall be compatible with the rated value and action setting value of the branch switch. 3? The electrical components and leakage



Construction Site Temporary Supply , 110V Guide UK , Elec-Mate

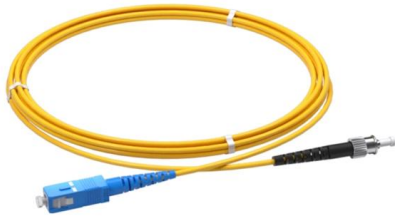
Construction Site Temporary Supply: The Complete 110V Guide for UK Sites Construction site temporary installations must use 110V CTE for portable tools, IP-rated distribution



Temporary Jobsite Power Setup: NEC & OSHA Compliance Guide

From large-scale construction zones to mobile field operations, our industrial portable power stations and jobsite power stations are engineered to meet NEC and OSHA standards. Every





Temporary Construction Power Box Guide: Portable Distribution

Learn how temporary power boxes work on construction sites. Discover how E-abel portable distribution cabinets and IP67 waterproof connectors ensure safe and reliable job site

Temporary Power Distribution Boxes for Electrical

Temporary power distribution boxes for flexible electrical installation. Robust solutions for construction sites, events and temporary energy infrastructure.

Ordering information

NO.	1	2	3	4	5	6
Model	SP12M1	SP12M2	SP12M3	SP12M4	SP12M5	SP12M6
Product name	Patch Panel	Patch Panel	Patch Panel	Patch Panel	Patch Panel	Patch Panel
Illustration						
NO.	1	2	4	1	2	4
Maximum number of cores	144	288	576	144	288	576
Product size (including module and accessories)	482.0(311)1704 mm	482.0(311)1861 mm	482.0(311)1717 mm	482.0(311)1704 mm	482.0(311)1861 mm	482.0(311)1717 mm
Standard color code	RAL9005	RAL9005	RAL9005	RAL9005	RAL9005	RAL9005

Pre-Terminated Patch Panel

- Multi-application support
- Flexible configuration
- Modular design



Cable Gland Plug
28mm Cable Gland Plug



MPD-EC up to 96 cores
MPD direct connection 48 ports



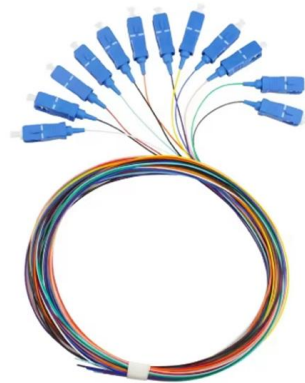
Mounting Bracket
Semi-open mounting holes

GENERAL INFORMATIONS

The type and scope of electrical equipment on construction sites is geared to the size and particular circumstances of each site. Using the types of distributor described in the equipment standards, it is

Key Points Of Installation And Collocation Of Distribution Box In

The wire bundle shall not be in direct contact with the inlets and outlets of the box. The power lines entering the switch box shall not be connected with pins. The inlets and outlets of the mobile



Questions about Assemblies for Construction Sites

Questions about Assemblies for Construction Sites Are there any special requirements for power supplies for building and assembly sites? The supply of electrical systems and equipment on building

SERVICE STANDARDS & GUIDE

DIEGO AREA ELECTRICAL NEWSLETTER
ATTENTION: THESE STANDARDS WERE DEVELOPED FOR MAINTAINING SAFETY AND RELIABILITY OF THE ELECTRIC DISTRIBUTION AND



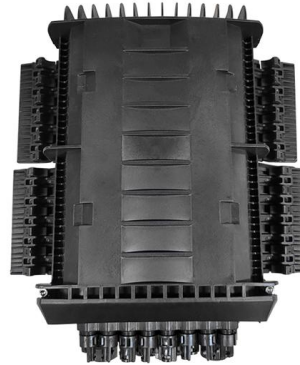
WALTHER-WERKE: Construction site power distributors

Full range of construction site power distributors The full range comprises connection cabinets, connection distributors, main and group distributors, distributor and terminal distributor cabinets. The



Construction Site Power Distribution Solutions , Power

Portable Power Adjust quickly as your site evolves with our portable power panels and distribution boxes. Designed for tough construction environments, they're



Temporary Power Regulations in Construction

Temporary Power Regulations in Construction
This document discusses requirements for installing temporary power at construction sites according to

Power supply on the construction site

A site power distribution board is usually an electrical distribution box equipped with various sockets to provide power for different equipment and machinery. A construction power distribution box may also



Best Practices for Installing Temporary Electrical Systems on

Installing temporary electrical systems for construction is crucial not only for operational continuity but also for ensuring safety on site. It requires careful planning and adherence to strict standards to



Electrical Installations On Construction Sites

Practical guidance Electrical hazards are a major cause of death and serious injury on construction sites. This industry standard provides practical



Electrical practices -- construction and demolition sites

A cord extension set must not to be joined so that the total length of any combination exceeds the relevant maximum value specified in table one. Note: Electrical

Temporary electrical wiring for construction sites

All 120-volt, single-phase, 15- and 20-ampere receptacles shall be of the grounding type and their contacts shall be grounded by connection to the equipment grounding conductor of the circuit





Contact Us

For datasheets, pricing, or custom telecom energy solutions, please visit:
<https://www.koskolong.co.za>