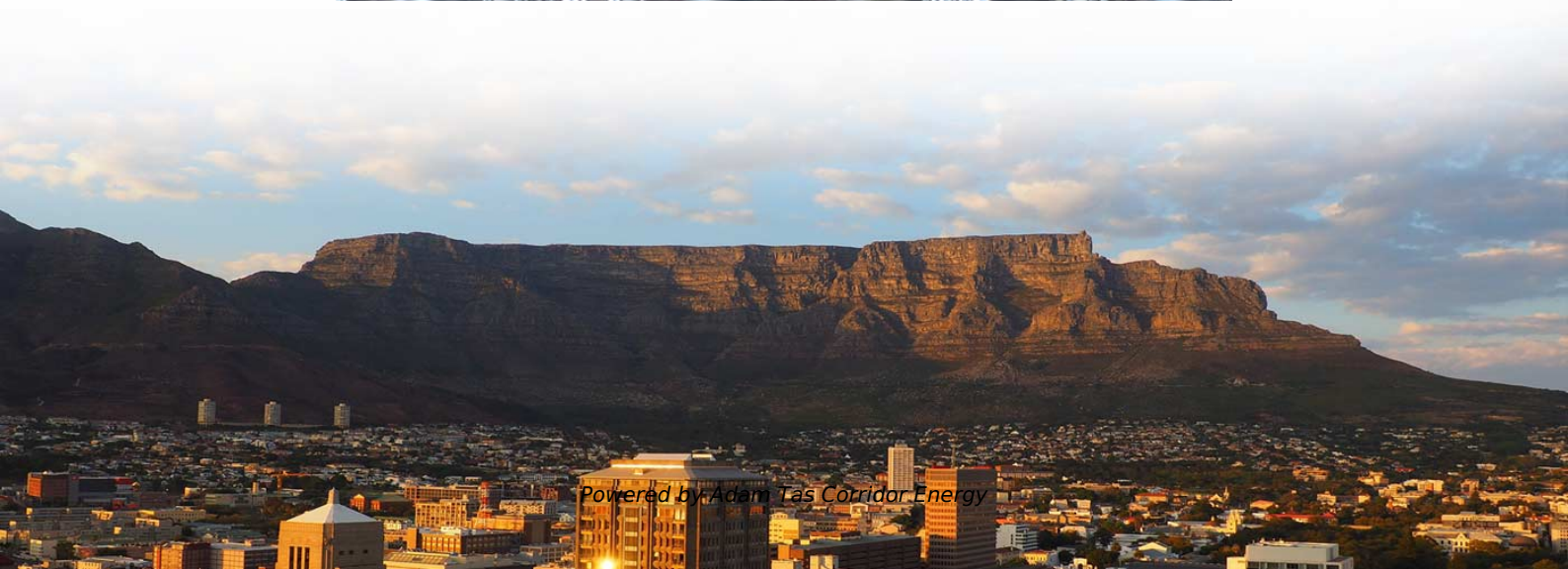




**Adam Tas Corridor Energy**

# **Structural dimensions of the cable tray**





## Structural dimensions of the cable tray

---



### B-Line series Cable Tray Design Considerations

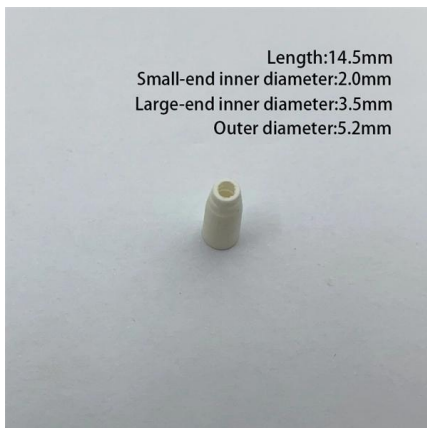
As an industry leader in cable tray, Eaton offers one of the widest ranges of cable management solutions available in the market today with its B-Line series portfolio. With unmatched quality and service, we

### A Guide to Cable Tray Accessories and Their Functions

Explore a detailed guide to cable tray accessories and understand their uses in ensuring safety, stability, and efficiency in electrical system



**MPO-MPO** Low Smoke Halogen Free Sheath  
Multimode 10 Gigabit 12 pole OM4  
Insertion loss <0.35dB Return loss >50dB



### Complete cable tray manual for electrical engineers and

Complete cable tray manual for electrical engineers and designers (on photo: power cable management ladder tray systems assembled aluminum cable tray ladder

### Cable Tray Dimensions and Specifications as per NEC

Many electrical systems employ cable trays. They route cables safely & efficiently. NEC



defines minimum cable tray size & electrical installation



## A Complete Guide to Cable Trays Sizes and Selection

To make selecting the right size easier, we've put together a quick reference table outlining the standard dimensions you'll find in the UK and where

## GUIDE CABLE TRAYS TECHNICAL

NEMA VE 1-2017 Specifies requirements for metal cable trays and associated fittings designed for use in accordance with the rules of Canadian Electrical Code, Part I and the National Electrical Code®



## Cable Tray Size Choosing: Key Factors for Electrical

The size of the cable tray you choose can significantly impact the performance and safety of your electrical system. Key factors that influence cable



## Cable Tray Types and Sizes

Explore various cable tray types and sizes for electrical installations. Learn about ladder, perforated, solid-bottom, wire mesh, and channel trays in this complete

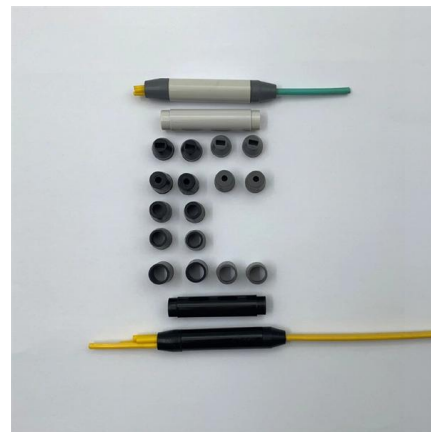


## Full cable tray systems specification document

B. Cable tray systems are defined to include, but are not limited to straight sections of [ladder type] [trough type] [solid bottom type] [channel type] cable trays, bends, tees, elbows, drop-outs, supports

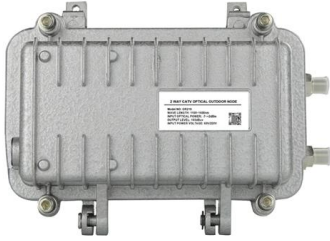
## Cable Tray and its types & Sizes

A cable tray is a type of a containment used to support insulated electrical cables used for power distribution, control, and communication.



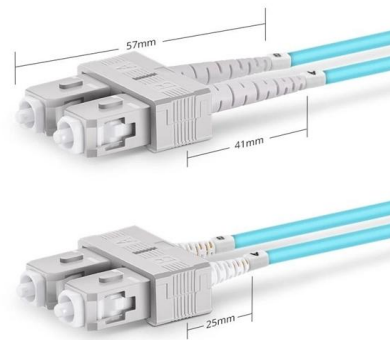
## CABLE TRAY SYSTEMS GUIDE

Material: Side Rails: Fitting side rails are I-beams with overall dimensions similar to straight tray sections. Rungs and Bottoms: Rung and Bottom designs are identical to similar straight cable tray



## Cable Tray Dimensions Guide: Standard Sizes, Tray

Explore standard sizes by tray type, understand width and depth limits, and see how to calculate and choose compliant cable tray sizes for real projects.



Duplex SC UPC



## Best Practice Guide to Cable Ladder and Cable Tray Systems

This guide covers cable ladder systems, cable tray systems, channel support systems and associated supports intended for the support and accommodation of cables and possibly other electrical

## Cable tray manual

INTRODUCTION The B-Line series Cable Tray Manual was produced by our technical staff. We recognize the need for a complete cable tray reference source for electrical engineers and designers.



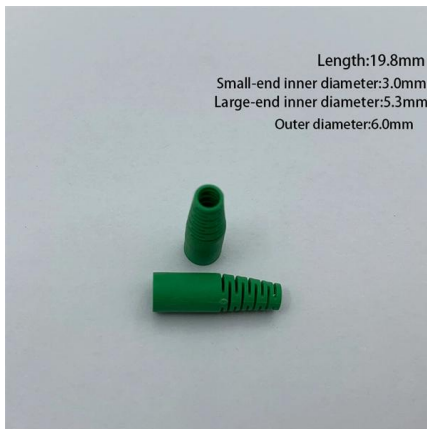


## 26 05 36 Cable Trays for Electrical Systems

Cable tray layout, showing cable tray route to scale, with relationship between the tray and adjacent structural, electrical, and mechanical elements. Include the following:

### GUIDE CABLE TRAYS TECHNICAL

In accordance with its continuous improvement policy, Legrand reserves the right to change the specifications and illustrations without notice. All illustrations, descriptions and technical information



### Industrial Electric Cable Trays: Dimensions and Types

ESAIN's online guide to industrial cable trays: discover how they are made, their dimensions, and the main types used in electrical installations.

### Types of Cable Trays - Advantages, Applications and Sizes

Explore the types of cable trays, their advantages, applications, and standard sizes. Learn how they improve cable management and support various industries.



## Cable Tray Size Chart and Selection Guide

Selecting the appropriate electrical cable tray dimensions is a critical decision that directly impacts the safety, efficiency, and longevity of any industrial or commercial electrical installation.



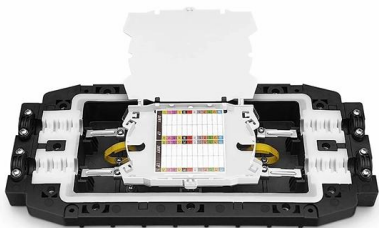
## B-Line series Cable Tray Design Considerations

Ladder cable tray is available in widths of 6, 9, 12, 18, 24, 30, 36, 42 and 48 inches with rung spacings of 6, 9, 12 or 18 inches. Note that wider rung spacings and wider cable tray widths decrease the overall



## Cable Tray Width, Dimensions and Specifications as per

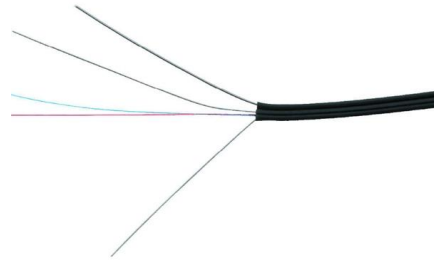
Learn about cable tray width dimensions and specifications as per NEC standards. Understand types, sizes, materials, and installation guidelines for safe and





## CABLE TRAY SYSTEMS GUIDE

The design and cost of the cable tray is greatly affected by this designation. In order to determine the most appropriate and economical system, a class should be selected that reflects the actual total



### cable tray technical specifications

Armorduct cable tray systems are usually assembled using M6 roofing bolts particularly for couplers, fishplates and connection to supporting framework. It should be noted that independent testing has

### Cable Tray Size Guide: How to Choose the Right Dimensions

Complete cable tray sizing guide with standard size chart, NEC calculation methods, and real engineering examples. Learn how to select the right cable tray dimensions for your project.



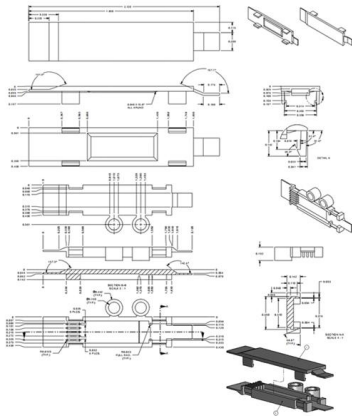
### Cable Tray Technical Guide A practical guide to product selection and

In designing supports for a cable tray system, consideration should be given to the loads associated with future cable additions and any additional loading that may be applied to the cable tray system (e.g.,



## Cable Tray Design and Standards Guide

1. The document outlines codes and standards that must be followed for design and construction of cable trays and their components. Standards listed include those



## Cable Tray Width, Dimensions and Specifications as per

Cable Tray Width, Dimensions and Specifications as per NEC Learn about cable tray width dimensions and specifications as per NEC standards. Understand types,

## Cable Tray Design and Sizing Guide , PDF , Beam

The document discusses key factors to consider when designing a cable tray system, including:  
1) Determining the appropriate width and height of the tray





## Contact Us

---

For datasheets, pricing, or custom telecom energy solutions, please visit:  
<https://www.koskolong.co.za>