



Adam Tas Corridor Energy

Swiss fiber optic splice box manufacturer





Swiss fiber optic splice box manufacturer

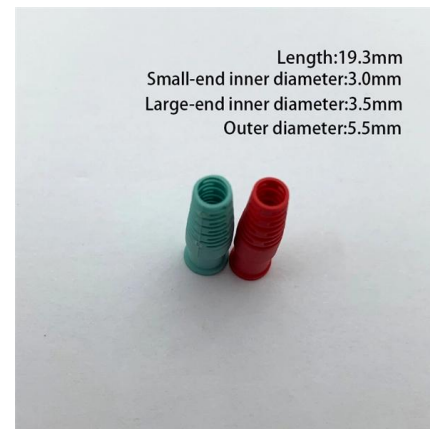
Fibre Optic Mini Splice box for 4 adaptors/splices



Fibre Optic Mini Splice box for wall mounting for 4x SC simplex or 2x LC duplex adaptors (unloaded) or 4 splices, dimensions: 160x110x30mm

Outdoor Fiber Optic Splice Box Manufacturer In China

A fiber optic splicing box houses and protects splices. It has ports for fiber optic cables. Each fusion splice is organized in splice trays inside. It achieves a clean,



Splice distributors and junction boxes

DIN Rail Box OS2 G652D 12xLC/APC Pigtail ready to splice, 6x LC/APC Duplex Adpt.

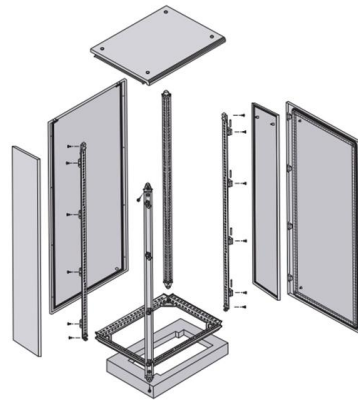


Splice box and Cabinets for fiber optics , Foss Fibre Optics

The access point terminates the fiber at the user end and is in many cases a wall mounted box. In



residences, the natural choice is a subscriber box, while cable channel and wall outlets are



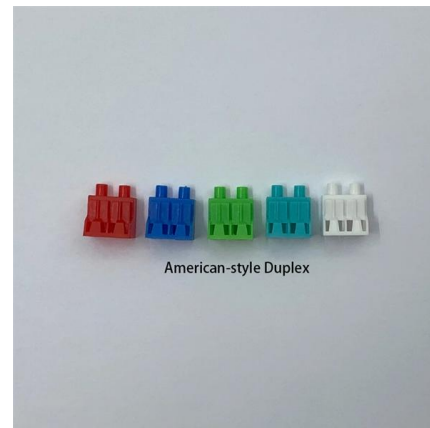
Fiber optic splice boxes

With the capability to accommodate up to 48 fibers through patching or splicing, the FP-19 ensures efficient connectivity in diverse scenarios. The FP-19 package includes essential components for



Fibre Optical Splice Box (GRP)

The new BARTEC fibre optical splice box, enables professional and timesaving connection of fibre optical cables. The fibre optical splice box comes with 2 splice



Splice distributors and junction boxes

/ Fiber Optic Cabling / Fiber optic distributor / Splice distributors and junction boxes



Fiber optic patch panel 1U: Fiber optic splice box with 96 fibers

The SlimConnect 1U fixed splice box defines new standards for professional fiber optic distribution. With up to 96 fibers in just one rack unit, it offers the highest port density on the market for space-critical



Fiber Optic Splice Box, FIMP-XLE 62MM

Compact industrial splice box for 48 fibers. DIN-rail mounting. The FIMP-XLE splice box is available with ST, SC, LC-Quattro or E2000 couplings. The full configuration contains splice holders, splice

Fiber Splice Box Archives

Fiber Optic Closure 48C Waterproof Fiber Splice Closure Horizontal Type Junction Box Enclosure
Fiber Optic Closure 96 Core Horizontal Optical Splice Enclosure 2 In 2 Out Fiber Closure Box



Fiber optic splice boxes

The fiber optic 19" rack splitter boxes, specifically the FP-19 type, stand out as ideal solutions for industrial applications owing to their robust design. These boxes are engineered to withstand the



Fiber Optic Splice Enclosure, Fiber Optic Joint

We have different types of joint closure fiber optic boxes. You can click and check the details of our splice enclosure types below. If you have any questions about our



The FOA Reference For Fiber Optics

Fiber optic joints or terminations are made two ways: 1) splices which create a permanent joint between the two fibers or 2) connectors that mate two fibers to



Splice enclosure Fibre optic

Fibre optic splice and distribution box Features Easy access and rugged housing made of extruded aluminum Connectors All standard connectors Place Wall



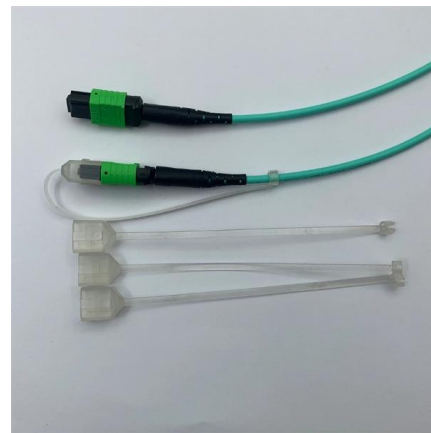


Fiber Optic Splice Boxes

Types of Splice Boxes A splice box is a protective enclosure used to house and safeguard electrical or fiber optic connections. These boxes play a critical role in maintaining signal integrity, preventing

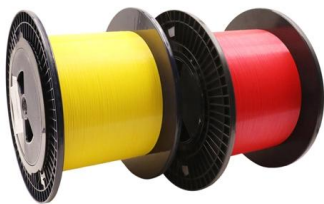
Optical splice boxes for fiber cabinets , Enoc System

Often the fiber needs to be spliced in a harsh environment and exposed to the weather and moisture. Our splice boxes provide quick access, while protecting



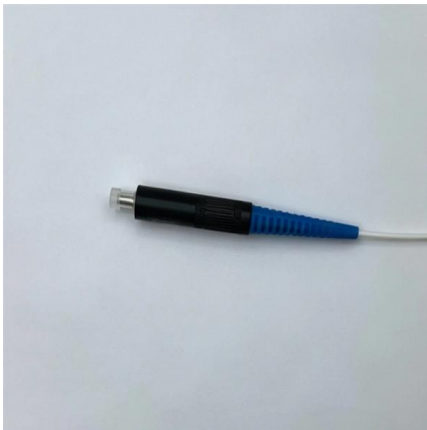
Fiber Optic Splice Box in the Real World: 5 Uses You'll

Fiber optic splice boxes are essential components in the world of telecommunications and data infrastructure. They serve as protective enclosures where fiber optic cables are joined, split, or



Fiber Optic Splices , Anixter Switzerland

Optical Distribution Frames; NGF Product Line
Accessory Accessory Type: Cable Clamp Kit For
Use With Fiber Termination Blocks Kit Type:
Cable Clamp Kit COMMSCOPE

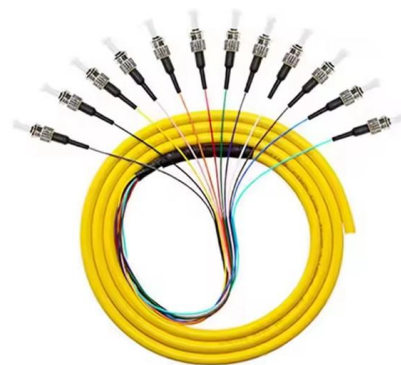


FO Splice Boxes in Glass-Fiber Reinforced Polyester

EC-Type Examination Certificate, Statement of Conformity, Declaration of Conformity, Attestation of Conformity and instructions have to be observed where applicable. For information see

Fiber Optic Splice Closure, Electrical Cable Junction

Fiber optical splice closure is widely used in communication, network systems, CATV cable TV, optical cable network systems, and so on. It is used for protective



Splice Box Manufacturer Comparison DACH , Fiber Products

Splice Box Manufacturer Comparison DACH: Modular Systems Overview The DACH splice box manufacturer comparison reveals: not every supplier delivers the same quality, flexibility



Splice Box Manufacturers Europe , Comparison Guide

Compare leading European splice box manufacturers. Technical criteria, quality standards, and selection guidance for fibre optic installations.



Fiber optic splice box, 48 cores FTTH box

Splice box, 48 cores FTTH box Fiber optic splicing box for 24 adaptors SC simplex, LC duplex or E2000 with key. Wall mounting enabled.



Choosing the Right Fiber Optic Splicing Solutions for

Find top-notch fiber optic splicing solutions to optimize network performance. Achieve seamless data transmission with precision and reliability.



Fiber optic junction box, Fiber optic terminal box

Find your fiber optic junction box easily amongst the 67 products from the leading brands (HUBER+SUHNER, BOPLA, METZ CONNECT,) on DirectIndustry, the



Optical splice boxes for fiber cabinets , Enoc System

Optical splice boxes in 4 sizes Enoc OB is a series of complete optical splice boxes in four sizes from 96 up to 288 fiber splices. Fits perfectly in the Enoc O5 ground



5 Tipps für den besten Splicebox-Kauf

Die richtige Wahl einer Fiber Optic Splice Closure sichert die Integrität des optischen Signals. Ein Joint Box schützt die empfindlichen Fusion

Fibre optic cable distribution , Splice boxes , LAPP Online Shop

Our splice boxes are used to securely connect and distribute fibre optic cables by protecting spliced glass fibres from external influences. They also enable easy maintenance and repair of the fibre optic





Contact Us

For datasheets, pricing, or custom telecom energy solutions, please visit:
<https://www.koskolong.co.za>