



Adam Tas Corridor Energy

Switch with built-in optical module





Overview

Co-Packaged Optics (CPO) is an optoelectronic co-packaging technology that integrates an optical module (responsible for optical signal transmission and reception) and a switch ASIC (responsible for electrical signal processing) into the same physical package. DCS-W32-S is an all-optical 32×32 matrix switch designed for high-throughput, low-latency interconnection between multiple input and output fibers. We offer a large range of LXI Ethernet and PXI & PXIe optical switching solutions which include 1x2, 2x2, 1x4 and 1x8 configurations, and our switch modules are available with a wide choice of connectors, including FC/APC, FC/PC, SC/PC, MU (Mini SI) and LC. Designed for durability and precision, our optical switches support single-mode and multimode fiber types with low insertion loss, high return loss, and reliable. Enable new AI architectures with the Optical Circuit Switch (OCS) The OCS optimizes data center networks by minimizing electrical switches and optical-electrical-optical (OEO) conversions, resulting in significant cost savings, reduced power consumption, and improved latency for GPU connections. DiCon's MEMS 1xN Switch components are produced based on DiCon's proprietary and proven MEMS tilting mirror technology.



Switch with built-in optical module



The Ultimate Guide to SFP Modules (2026): Types,

What is an SFP? SFP (Small Form-factor Pluggable) is a compact, hot-pluggable network interface module used to connect network devices (switches, routers,

Optical switch modules

POLATIS optical switch modules by HUBER+SUHNER, feature a non-blocking all-optical matrix, port counts from 16-48xCC, and "any-to-any" port connectivity.

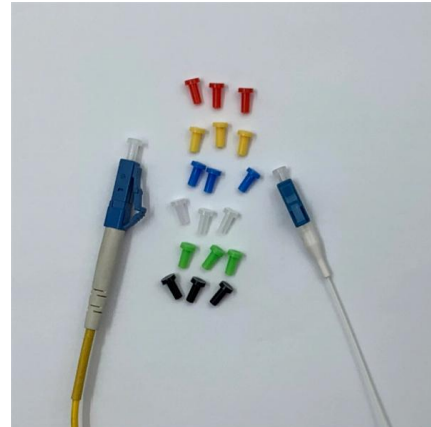


Cisco Optics , Transform Your Network

Pluggable optics enable high data-rate transmission between servers, switches, and routers. Get performance-leading optical transceivers for any network with Cisco

View the Optical Module Status on a Switch

This article provides instructions on how to view the Optical Module Status on your switch.



MEMS 96X96 OPTICAL MATRIX SWITCH MODULE

MEMS Optical Matrix Switch Module is built with DiCon's proprietary MEMS technology. Each module contains 2 sets of MEMS mirrors for making 1-to-1 connections between input and output ports.



View the Optical Module Status on a Switch

Article ID:5508 View the Optical Module Status on a Switch Objective The Cisco Small Business Series Switches allow you to plug in a Small Form-factor Pluggable (SFP) transceiver in



Cisco MGE SFP Modules Cisco Small Business Network Accessories

Easily connect switches with fiber-optic networking modules Highlights Adds fiber-optic connectivity to Cisco 100 to 500 Series switches High-performance link for connecting networks





Optical Transceiver Module and Fiber Network Switch Matching Tips

Optical transceiver modules has SFP, SFP+, XFP, SFP28, QSFP+ and QSFP28 types. SFP+ optical modules are the most widely used to connect fiber network switch to realize different

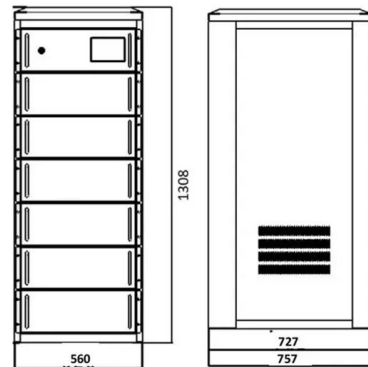


DCS-W32-S Single-mode Low Loss All-Optical Circuit

It enables any-to-any connectivity between input and output ports via a transparent optical switch core--transmitting the original light signal without optical-to

High-density optical switch module , Network equipment

The high-density optical switch module is equipped with 8 channels of 2x4 type optical switches per module. This allows for 16 channels per base unit (size: 1U),



Matrix optical switch

The Matrix MXN fiber optical switches allow simultaneous connection between M inputs and N output fibers, in a fully non-blocking, all-optical, cross-connect



Optical Switches , Keysight

Keysight optical switches enable high-performance, multichannel optical signal routing for automated and manual test applications. Designed for durability and precision, our optical switches support



MEMS 16X16 OPTICAL MATRIX SWITCH MODULE

MEMS Optical Matrix Switch Module is built with DiCon's proprietary MEMS technology. Each module contains 2 sets of MEMS mirrors for making 1-to-1 connections between input and output ports.

Please read

400G Optical Modules: QSFP-DD or OSFP Initiated by Cisco, QSFP-DD was proven to address all the technical and market requirements for a successful 400 GbE roll-out. QSFP-DD is supported by



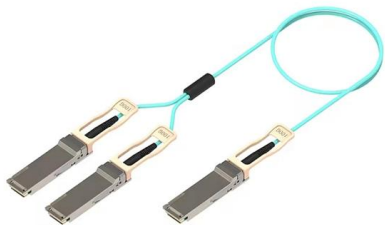


Cisco Catalyst 9300 Series Switches Data Sheet

Network modules Cisco Catalyst 9300 Series Switches (C9300X and C9300 SKUs) support optional network modules for uplink ports (Figures 2 and 3).

CPO Switch: Next-Generation Integrated Optical

Co-Packaged Optics (CPO) is an optoelectronic co-packaging technology that integrates an optical module (responsible for optical signal transmission and

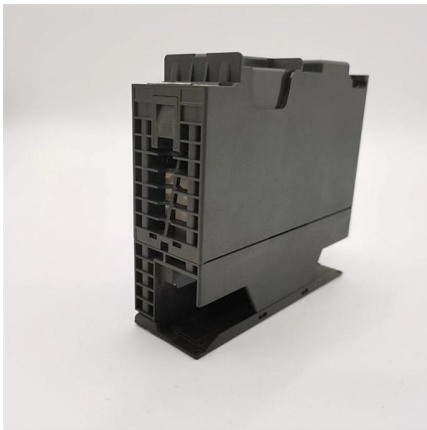


MEMS 72X72 OPTICAL MATRIX SWITCH MODULE

MEMS Optical Matrix Switch Module is built with DiCon's proprietary MEMS technology. Each module contains 2 sets of MEMS mirrors for making 1-to-1 connections between input and output ports.

Gigabit SFP Network Switch Selection Guide for 2025

From a future-proofing perspective, gigabit SFP switches enable seamless upgrades to fiber optic networks as fiber becomes the standard for high-speed data transmission. While standard

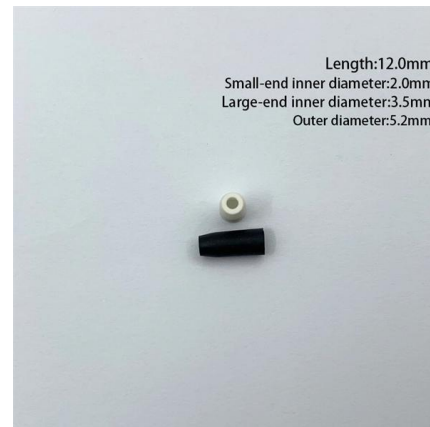


Common Optical Modules and Interfaces for Switches

Common optical module types such as SFP, GBIC, XFP, and XENPAK, along with optical interfaces like FC, SC, and LC, each have their unique characteristics that make them suitable for

What Is an SFP Module? Complete Guide

They are used in ethernet switches, network switches, and media converters, enabling data transmission over copper cables or fiber optics, thus



Introduction of 400G Cisco Optical Modules and Switches

Cisco 400G Line Side Optical Module Technology Trends For line-side optical modules, the design goals are low cost, small size, and optimal



MEMS 1xN Switch

This MEMS mirror platform has been built into millions of components for the optical networking industry and comes with a 20 plus years of field deployment record.



Cisco Prisma II Optical Switch Modules Data Sheet

The optical switch module in the Prisma II XD chassis module form factor features Subscriber Connector/Angle-Polished Physical Contact (SC/APC) connectors for input and output

Optical Switching Solutions

PXI & PXIe Optical Switches Our PXI optical switching modules include high-performance multiplexers and insert/bypass switches. MEMS (Micro-Electro



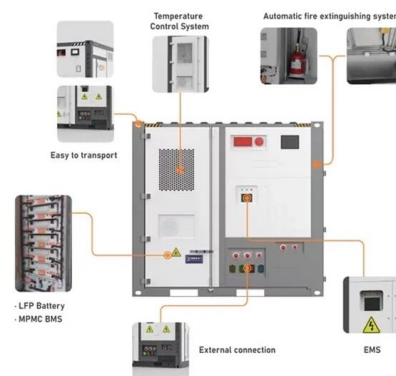
Cisco Pluggable Optical Transceivers Product Selection Tools

As network architects design their networks, determining which optical transceiver is supported across different servers, routers, or switches can be a complex task. It is equally complex to determine



Optical Circuit Switch

The 300x300 port Optical Circuit Switch is based field-proven and ultrareliable digital liquid-crystal platform from Coherent, which features three key advantages: low

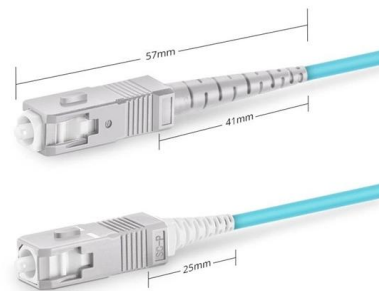


MEMS 192X192 OPTICAL MATRIX SWITCH MODULE

MEMS Optical Matrix Switch Module is built with DiCon's proprietary MEMS technology. Each module contains 2 sets of MEMS mirrors for making 1-to-1 connections between input and output ports.

Empowering Enterprise Connectivity: An In-Depth Look at the Huawei

Discover the details of Empowering Enterprise Connectivity: An In-Depth Look at the Huawei S5735-L48P4X-A Switch at LonRise Equipment Co. Ltd., a leading supplier in China for Optical



Simplex SC UPC



How to Choose the Right Optical Transceiver in 2025

Learn how to select the right optical transceiver for your switch or router. Compare SFP, SFP+, QSFP28, Cisco SFPs, and Huawei modules with

MINA_A_201542_O 0..11

However, the use of surface normal micro-optics introduces considerable assembly complexity as the connectivity scales. The switching speeds do not support packet-based traffic at the optical layer.



Contact Us

For datasheets, pricing, or custom telecom energy solutions, please visit:
<https://www.koskolong.co.za>