



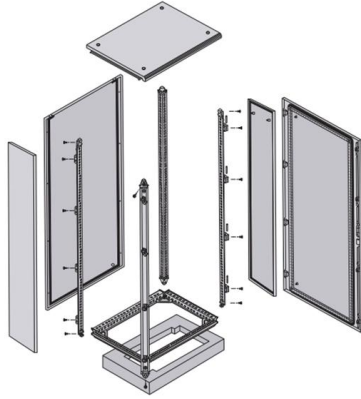
Adam Tas Corridor Energy

Switch with the most optical ports





Switch with the most optical ports



An introduction to SFP ports on a Gigabit switch

Switches with SFP ports can connect to fiber optic and Ethernet cables of different types and speeds. Almost all enterprise-class network switches include two or more SFP ports. This

All-Optical Ethernet Switch Explained: Features and

An all-optical Ethernet switch is a network switch whose service ports are entirely optical, meaning every interface uses fiber rather than copper. This



· Fine workmanship
· High-quality chip



11 Best Fiber Optic Switch Modules for 2026 Networking

Discover the top 11 fiber optic switch modules for 2026 networking that can elevate your infrastructure--continue reading to find the perfect fit for your

NVIDIA Announces Spectrum-X Photonics, Co

NVIDIA today unveiled NVIDIA Spectrum-X(TM) and NVIDIA Quantum-X silicon photonics



networking switches, which enable AI factories to connect



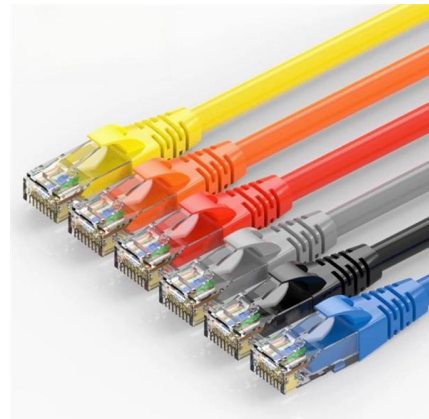
Unlock the Power of Connectivity: Explore the 8 Port

Discover the capabilities of the 8 Port SFP Optical Switch, perfect for expanding your network connectivity with fiber optics and advanced Ethernet



Optical Circuit Switch

The 300x300 port Optical Circuit Switch is based field-proven and ultrareliable digital liquid-crystal platform from Coherent, which features three key advantages: low



SFP Network Switches , SFP Managed Port Switches

The SFP network switches on this page are intended for use with large fiber optic networks with limited Ethernet connectivity. If you are looking for SFP switches that are ideal for "blended" networks of





How to use Ubiquiti SFP ports for fiber optic connections

Extend your network with fiber using SFP ports on UniFi gear. Learn how to choose modules, avoid pitfalls, and set up fast, reliable fiber links.



Mis on SFP-port? Teie lüliti võimsaima pesa ülim juhend

Don't leave your switch ports empty! Learn what an SFP port is, how it differs from standard RJ45 ethernet, and when to use it for fiber optic speeds and long-distance links.

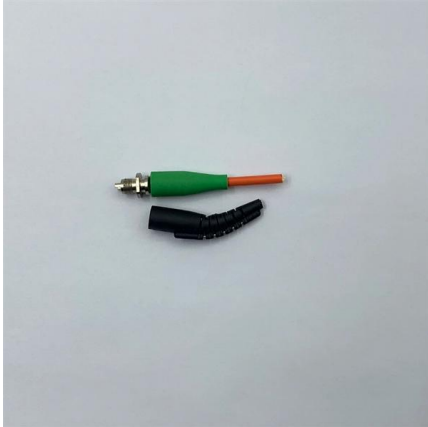
Stop Guessing Optics: A Practical Compatibility Guide

You can have the "right" switch and the "right" optic--and still end up with a link that won't come up. Most failures aren't exotic.



NVIDIA announces spectrum-X photonics, co-packaged

NVIDIA unveiled NVIDIA Spectrum-X(TM) and NVIDIA Quantum-X silicon photonics networking switches, which enable AI factories to connect



Ethernet Switch Port Types Explained 2026: RJ45, SFP,

This guide provides an engineering-level overview of switch port technologies, real-world deployment mapping, and detailed selection



Best Network Switches: Add Ports, Speed to Your

We tested several network switches to help find the right one for your needs and budget.



Optical Circuit Switch

Networking Optical Circuit Switch Enable new AI architectures with the Optical Circuit Switch (OCS) The OCS optimizes data center networks by minimizing electrical



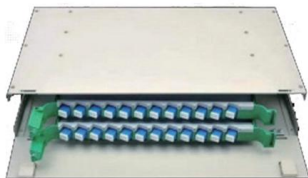


QSFP28 Compatible Switches: Complete Guide by Vendor

Native QSFP28 Ports vs. Backward-Compatible Ports A QSFP28 switch is a networking platform that supports 100-Gigabit Ethernet through QSFP28 form-factor ports. Some switches offer

All-Optical 24-Port SFP Network Switch Layer3

TOP-S3230-28SX is totally optical switch with 24-port Gigabit SFP Layer3 managed network switch TOP-S3230-28SX, features with All-Optical Ports and Redundant



The Best Ethernet Switches You Can Buy for 2024: A

Discover the best Ethernet switches for 2024 in our comprehensive guide. Whether you need a powerful managed switch or a simple unmanaged

SFP vs SFP28 vs QSFP - Key Differences for Data Centers

There are five form factors: SFP, SFP+, SFP28, QSFP+, and QSFP28. They are different optical transceiver types, but all are hot-pluggable network interface modules that connect a network



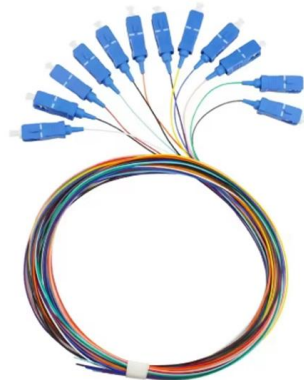
A Comprehensive Overview of Ethernet Switch Port Types

Understanding the differences between Ethernet switch port types is essential for selecting the most appropriate network switches for your specific



Ethernet Switch Port Types Explained 2026: RJ45, SFP,

Ethernet Switch Port Types Overview Why Switch Port Types Matter in Modern Networks Unlike early-generation networks where everything ran on



MikroTik · Switches

Our top-of-the-line switch with incredible 2.5 Gigabit port density, combo ports, and even a pair of 40 Gbps QSFP+ cages. Enterprise-level gamechanger for the



What Is An SFP Port? The Ultimate Guide To Your Switch'S Most

Don't leave your switch ports empty! Learn what an SFP port is, how it differs from standard RJ45 ethernet, and when to use it for fiber optic speeds and long-distance links.



Fiber Optic Network Switches , Ethernet to Fiber

VERSITRON manufactures a wide range of fiber optic switches that provide links for your 10Base, 100Base, 1000Base Gigabit, and 10 Gigabit networks

EDS-4008 Series

The EDS-4008 Series is a range of 8-port managed Fast Ethernet switches with the option for four 1 Gbps uplink ports or two 100M ST/SC fiber-optic ports. This



All-Optical 48-Port SFP Network Switch Layer3 Managed network switch

Deployed as a top-of-rack (ToR) access switch, it supports fiber-optic connectivity for multiple servers in data centers. This configuration meets the low-latency transmission requirements of servers and



Gigabit Ethernet

This feature eliminates the need for Ethernet crossover cables, making obsolete the uplink vs. normal port choices and manual selector switches found on many older



What is Differences Between Switch Optical Ports and Ethernet Ports

Common optical port types for switches include 155M, 1.25G, 10G, 25G, 40G, and 100G.

>>>Read More:What is the difference between SFP+ high speed cableSFP+ electrical port

Best High-Speed Network Switches

Which high-speed network switch is the best?
The best high-speed network switch you can get for most use cases is the Linksys SE3008. It has



MikroTik · Switches

A compact 1U 400G switch built for AI clusters, storage fabrics, and high-speed aggregation, featuring four 400G QSFP56-DD ports, dual 10 Gigabit Ethernet,



Contact Us

For datasheets, pricing, or custom telecom energy solutions, please visit:
<https://www.koskolong.co.za>