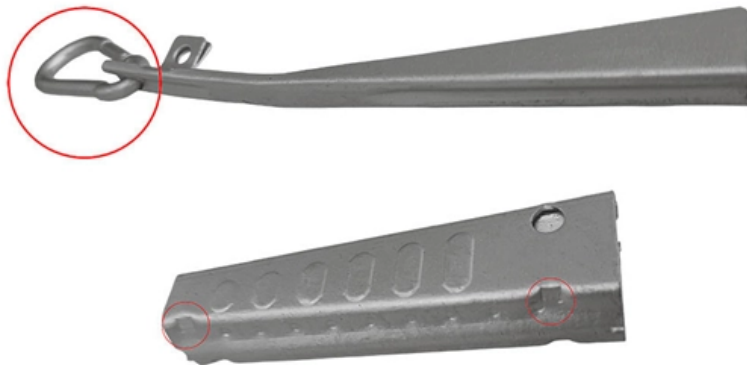




**Adam Tas Corridor Energy**

# **Switches 2 Optical 2 Electrical Single-Mode Self-Operated**





## Overview

---

The 2x2 single-mode switches are fully reversing optical bypass switches, which are used to insert or bypass nodes in fiber ring networks. These non-blocking, non-latching components require a 5V DC switching voltage. It details various types of switches, including fast electro-optic and acousto-optic. GEZHI 2x2F Fiber Optic Switch Non-latching or Latching type in small size with LC/UPC connector for Single-mode 1310/1550nm and MM 850nm. Use 25+ X-Series applications to analyze, demodulate, and troubleshoot signals across wireless, aerospace/defense, EMI, and phase noise. With extra memory and storage, these enhanced NPBs run Keysight's AI security and performance monitoring software and AI stack. This MEMS mirror platform has been built into millions of components for the optical networking industry and comes with a 20 plus years of field deployment record.



## Switches 2 Optical 2 Electrical Single-Mode Self-Operated

---



### Fiber-optic Prism Optical Switches

The 2x2 single-mode switches are fully reversing optical bypass switches, which are used to insert or bypass nodes in fiber ring networks. These non-blocking, non

### Compact non-volatile multilevel Sb<sub>2</sub>Se<sub>3</sub> electro-optical switching in

This theoretical modeling and simulation paper presents designs and projected performances of two non-volatile, broadband, on-chip 2 × 2 electro-optical switches based upon the



### Optical Switches: Singlemode/Multimode Fiber Optic

These fiber switches offer a cost-effective way to provide flexibility in optical network connectivity.

### Optical Switches , Keysight

Designed for durability and precision, our optical switches support single-mode and multimode fiber types with low insertion loss, high return loss, and reliable repeatability. With support for various



Applications include optical protection, optical channel monitoring,



### MEMS 1xN Switch

DiCon's MEMS Matrix Switches are extremely stable and can operate under open-loop conditions. They have the best-in-the-class durability, repeatability, and

### Optical Modules for Huawei S Series Switches

Multi-mode optical modules are applicable to short-distance transmission, while single-mode optical modules are applicable to long-distance transmission. Single-mode optical modules will be widely



### How to Convert Multimode to Single-mode Fiber: A

Discover the complete guide on converting multimode to single-mode fiber in communication networks. Understand the differences and learn the



## **RG-SF2920-8GT2MG2XS-P 8-Port GE All-Optical PoE Switch, 2 × 5G**

RG-SF2920-8GT2MG2XS-P 8-Port GE All-Optical PoE Switch, 2 × 5G Electrical Ports (Backward Compatible) Various port combinations, rate increase, installation in a concealed telecommunication



## **FiberSwitch® Light switching for optical systems**

FiberSwitch® Fiber optical singlemode switches (UV / VIS, polarization maintaining)

## **On-chip silicon photonic controllable 2 × 2 four-mode waveguide**

Multimode optical switch is a key component of mode division multiplexing in modern high-speed optical signal processing. In this paper, we introduce for the first time a novel 2 × 2



## **All-optical switches: the evolution of optical functionality**

The evolution of the optical switch into a multifunctional all-optical device has enabled numerous novel applications that could not have been realized previously.



### Cisco GLC-LH-SMD 1000BASE-LX/LH SFP Transceiver

Cisco GLC-LH-SMD compatible SFP transceiver supports up to 10km link lengths over LC duplex SMF fiber. Each SFP transceiver module is individually tested to



### A Review of Silicon-Based Integrated Optical Switches

The optical switch is an essential part of optical integrated circuits, with broad applications in optical communications and networks, optical computing,

### Optical Switch Singlemode 1x8 · 1x12 · 1x16 · 2x4 · 2x8

Optical Switch Singlemode 1x8 · 1x12 · 1x16 · 2x4 · 2x8 The fiber optical switches are based on a proprietary micro-mechanical/ micro optical design. This guarantees superior properties, wide





## Optical Switches

It details various types of switches, including fast electro-optic and acousto-optic devices, compact MEMS and thermo-optic switches on photonic integrated

### 2X2 Optical Switch

2X2 Fiber Optical Switch connects optical channels by redirecting an incoming optical signal into a selected output fiber. The 2X2 Opto-Mechanical Optical Switches consists of 2 input and 2 output



### Single Mode Optical Switches , Cylindrical Optical Switches , Amazlink

Based on Micro-Electro-Mechanical System (MEMS) technology, these single mode optical switches are available in port configurations of 1x2 to 1x16. The rotation of MEMS mirror controls the path of

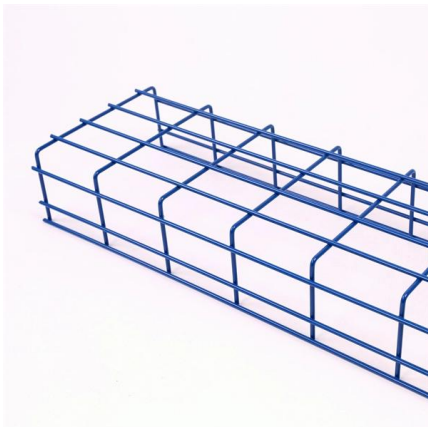
### 2x2 Single-Mode Bypass Mechanical Fiberoptic Switch

The Switch offers ultra-high reliability and fast switching speed as well as bi-directional performance. The MS fiberoptic switches are true switching solution



### Cisco SFP-25G-LR-S Compatible 25GBASE-LR SFP28

The Cisco SFP-25G-LR-S compatible SFP28 transceiver provides 25GBase-LR throughput up to 10km over single mode fiber (SMF) using a wavelength of



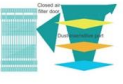
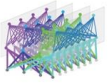

### SCALANCE X

Media modules for SCALANCE X-300 (MM992-2CUC MM992-2CUC3) MM992-2CU2) MM992-2VD5)



### Everything About Single Mode Switches , Versitron

Optical switches, whether single mode or multimode have a wide range of visible spectrum, and are highly reliable in terms of eliminating crosstalk and noise. This

<p><b>All-Optical Backplane</b></p>  <p>→ Zero fiber connections at the optical layer, three layers of optimized design, and stable routing for 25 ports</p> <p>→ Innovative multi-level dustproof and optical port alignment technologies, ensuring high reliability</p>	<p><b>Many-Degree WSS</b></p>  <p>→ 32 degrees, non-blocking flexible grooming</p> <p>→ Cost-effective, OA-free, high reliability, 2x wavelength dropping efficiency compared with traditional boards</p>	<p><b>Digital Optical Layer</b></p>  <p>→ Use of OFDM pilot tone and high-precision wavelength monitoring technologies to visualize the fiber quality, wavelength, dropouts, and performance of the OXC system, achieving digital OXC</p>
--	--	--



## Article / Determining Fiber Optic Switches

All-Optic (O-O-O) -- Fiber optic network switches designed with scalable all-optical, O-O-O, MEMS (Micro-Electromechanical System) technology employ control mechanisms to tilt mirrors or direct



## Fiber Optic Switches, Multiplexers, Demultiplexers

Fiber optic switches, multiplexers and demultiplexers block or route optical signals in a fiber optic network. Where switches simply block or pass optical signals on

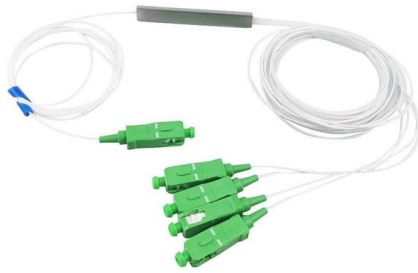
## 2x2 Optical Switch

2x2 Full Opto-Mechanical Optical Switches  
Description The 2x2F Bi-directional Fiber Optic Switch connects optical channels by redirecting 2 incoming optical signals



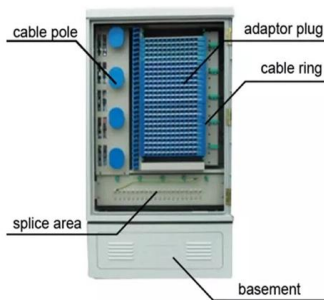
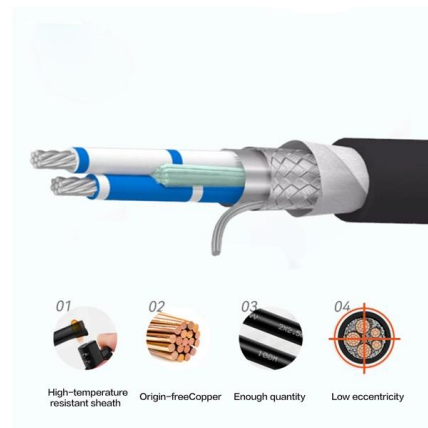
## 1X2 Optical Switch

1X2 Fiber Optical Switch connects optical channels by redirecting an incoming optical signal into a selected output fiber. The 1X2 Opto-Mechanical Optical Switches consists of 1 input and 2 output fiber



### 1x2 fast Fiber Optical Switch (PM)-Ideal-Photonics Inc

The microsecond fiber optic switch is designed to meet the most demanding switching requirements for reliability, durability, speed, and none-stopping high frequency switching; more specifically, is



### 2x2 Optical Switch

The 2x2F Bi-directional Fiber Optic Switch connects optical channels by redirecting 2 incoming optical signals into 2 output fibers. This is achieved using a opto-mechanical configuration and activated via

## Contact Us

For datasheets, pricing, or custom telecom energy solutions, please visit:  
<https://www.koskolong.co.za>