



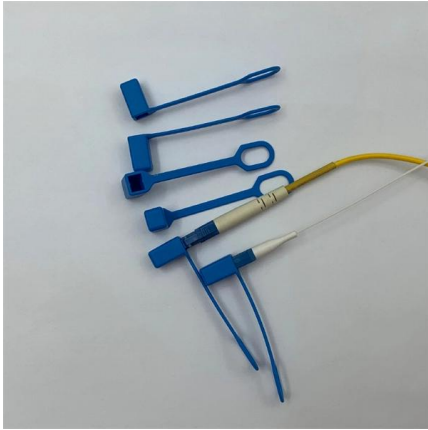
Adam Tas Corridor Energy

Tariff Costs Fiber Ethernet Switch SFP





Tariff Costs Fiber Ethernet Switch SFP

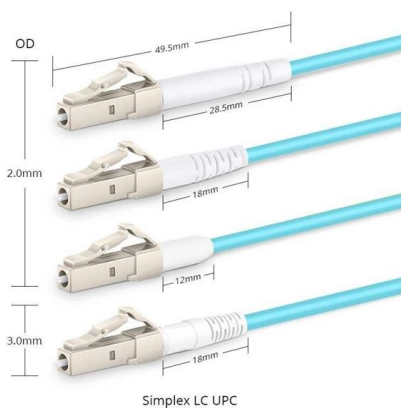
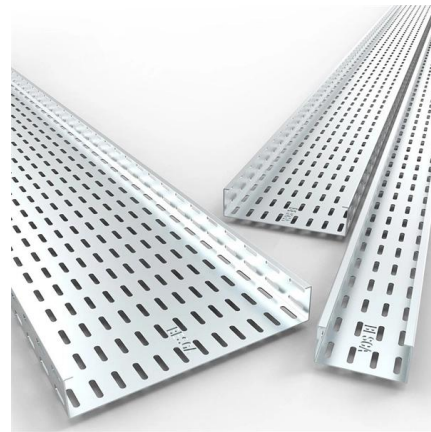


Customs Ruling NY N021952

The SFP product family consists of the following Models of SFP Transceivers; 1000BASE-T, 1000BASE-SX, 1000BASE-LX, 1000BASE-ZX, 100BASE-BX, 100BASE-FX, and 100BASE-BX. The SFP

24ports SFP Fiber Ethernet Switch

BD-S2228/S2228F/S2228PoE is a modularized hi-performance workgroup-level or enterprise-scale switch, with 24 Fast Ethernet ports (24 100M SFP slots for



Enhance Data Transmission with SFP Ports on Gigabit

Boost data transmission with SFP ports on gigabit switches! Learn how these compliant switches with IEEE 802.3z standard provide up to 1Gbps

Industrial Gigabit 4 Ports PoE Ethernet Switch PoE

Industrial Gigabit 4 Ports PoE Ethernet Switch PoE+ Fiber Switch with 100/1000M Adaptive SFP



Slot Din Rail Unmanaged 10/100/1000Mbps Network Switch



OEM SFP Modules Explained: Compatibility, Cost and Use Cases

In this article, we will break down everything you need to know about OEM SFP, including how they compare to compatible transceivers, why they are priced higher, how long they

SFP vs SFP+: The OEM Guide to 1G and 10G Optical

SFP (Small Form-factor Pluggable) Originally designed to replace the bulky GBIC, the standard SFP supports speeds up to 1.25 Gbps. It is the industry



Gigabit Switch 4 SFP + 2 RJ45 Plug & Play Metal , Elfcam

Compact Gigabit switch with 4 SFP ports and 2 RJ45 ports, unmanaged, fanless, metal casing, non-blocking. Ideal for desktops and small offices. Fast delivery.



Electrical SFP vs. Fiber SFP: Speed, Distance, and Cost Comparison

Learn how electrical SFP compares with fiber SFP in speed, distance, power consumption, and cost. A practical guide for data centers, network engineers, and enterprise



Fast, Gigabit, and 10 Gigabit Ethernet Switches with SFP+ Modules

Managed and unmanaged Layer 2 and Layer 3 fiber optic Ethernet switches. With 10G SFP+ fiber optic transceiver modules, they meet your highest bandwidth demand.

What is an SFP Port on Gigabit Switch? Types, Benefits & Trends 2025

Ethernet switches are an essential component of any network infrastructure, connecting devices into a network that can, without switches, become extremely complicated. When referring



SFP vs SFP+: What's the Difference and Which One

When deploying fiber optic networks, choosing the right transceiver is crucial for performance, cost, and compatibility. Two of the most common form



SFP & FIBRE EXPLAINED

SFP & FIBRE EXPLAINED Small form-factor pluggable (SFP) transceivers are a core technology in many networks. They provide vital communication between switches and important network



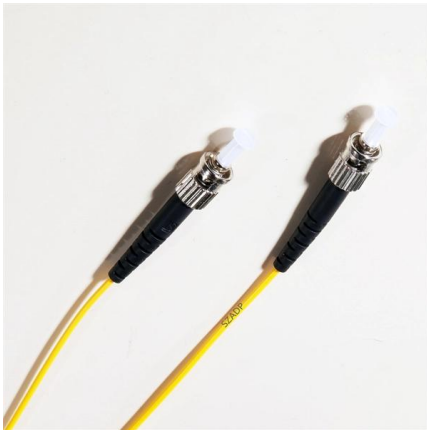
What is an SFP Port on Gigabit Switch? Types, Benefits

Discover what an SFP port on a Gigabit switch is, types of SFP ports, their differences from RJ45 ports, benefits, use-case examples, and future trends.

Gigabit SFP Network Switch Selection Guide for 2025

Learn how to choose the right model and explore the best FS SFP network switches.





Gigabit SFP Network Switch Selection Guide for 2025

As enterprises continue to prioritize network stability, scalability, and cost efficiency, Gigabit SFP switches remain a practical and powerful solution for many scenarios in 2025. Whether

Fiber Switches

Ethernet Switches with fiber uplink ports or all fiber switches, commercial grade, managed and unmanaged and PoE enabled are all available in this section.



Cisco SFP vs GBIC vs XFP vs SFP+: A Practical

Learn the differences between SFP, SFP+, GBIC, and XFP modules - speeds, distances, and compatibility, from Network-Switch experts.

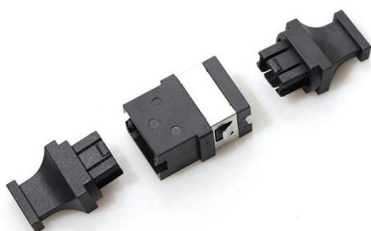
What is SFP Port? everything you need to know

Selection Criteria for RJ45 or SFP Port SFP port with fiber SFP module should be considered when the link distance is greater than 100 meters



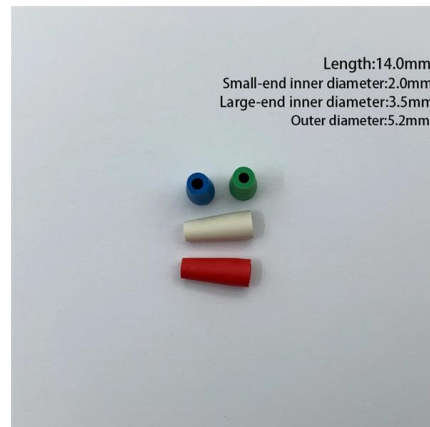
Understanding SFP Switches: The Essential Guide to Fiber and

Discover the essentials of SFP switches, comparing SFP and RJ45 ports, their roles in Ethernet connectivity, and the latest SFP specification updates.



SFP Price

Maximize Budget, Ensure Timely Delivery.
1000BASE-T SFP (NEBS 3 ESD). Catalyst 6500
24-port GigE Mod: fabric-enabled (Req. SFPs).
Catalyst 4500 E-Series 12-Port 10GbE (SFP+).
Catalyst



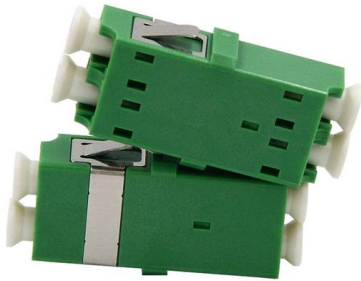
What is SFP Port? Everything You Need to Know

Initial Published: December 2, 2022 An SFP port is a physically small slot in a networking device that accepts an SFP module insert. Most modern



Classification of SFP Transceivers in Customs Ruling

Classification of Small Form Factor Pluggable Transceivers under Customs Tariff, along with duty eligibility under Notification No. 57/2017-Cus, is discussed.



Cisco SFP Modules for Gigabit Ethernet Applications

Cost-effective Small Form-factor Pluggable (SFP) transceivers for Gigabit Ethernet applications
Product Overview The industry-standard Cisco® Small Form-Factor Pluggable (SFP) Gigabit Interface

What Is an SFP Port on a Gigabit Switch? Full Guide 2026

Learn what an SFP port is on a Gigabit switch, the types of SFP ports, SFP vs RJ45 differences, long-distance fiber options and real-world use



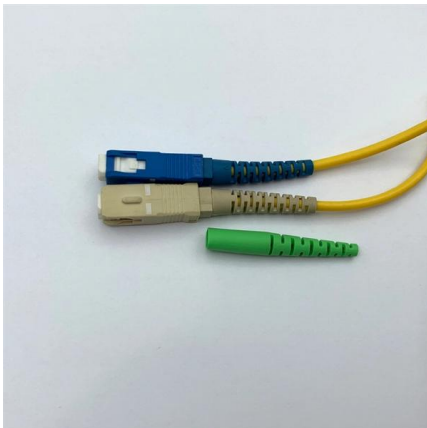
What is an SFP Port-Module in Network Switches and

A Small Form Factor Pluggable (SFP) Port on a network switch is an Ethernet Interface which has been designed to allow a small module (which contains a



What Is an SFP Port on a Gigabit Switch? - TURNSTONE CABLES

Understand what an SFP port on a gigabit switch is, how it works, and why it improves speed, flexibility, and network expansion.



Customs Ruling NY N301457

The 2 SFP slots are capable of achieving 1000 Mbps transfer speeds via Fiber Optic cabling. This device also features RJ45 and micro-USB console ports. The third item, the T1600G-18TS 16-port

Contact Us

For datasheets, pricing, or custom telecom energy solutions, please visit:
<https://www.koskolong.co.za>