



Adam Tas Corridor Energy

Technical briefing on cable tray fixing supports





Technical briefing on cable tray fixing supports

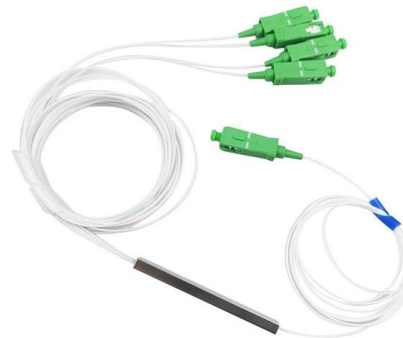


Microsoft Word

Cable Trays Support, Fixing Hardware & Accessories shall be supplied as per this drawings. All finished galvanized MS structural members for Cable Tray Support, Fixing Hardware & Accessories shall be

cable tray solutions For tunnels guide

optimised fixing systems for each range There are very stringent requirements for cable support systems in rail or road tunnels. Tunnels can have rounded walls or ceilings, concrete beams, downward runs,



Method Statement installation of Cable Trays and Ladders

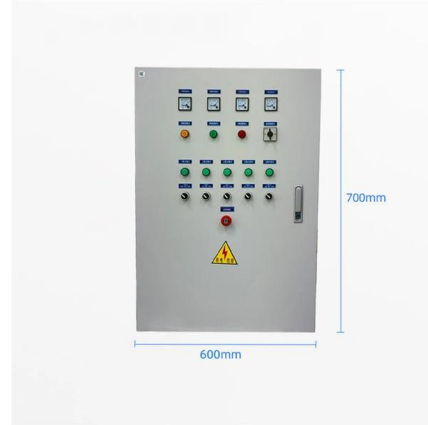
Fixing cable Trays and ladders Sleeves shall be provided at all the wall crossings. Ensure the installation of trays/ladders is neat and in a straight

Mastering Cable Tray Installation , Step-by-Step Guide for a Seamless

Learn how to install cable trays correctly. Get the ultimate step-by-step guide on setting up a



seamless and reliable cable management system.



How to Install Cable Tray: A Comprehensive Guide to Different Cable

Welcome to our step-by-step guide on installing cable trays! In this video, we'll explore the different types of cable trays available and provide detailed instructions for their installation.

GUIDE CABLE TRAYS TECHNICAL

NEMA VE 1-2017 Specifies requirements for metal cable trays and associated fittings designed for use in accordance with the rules of Canadian Electrical Code, Part I and the National Electrical Code®



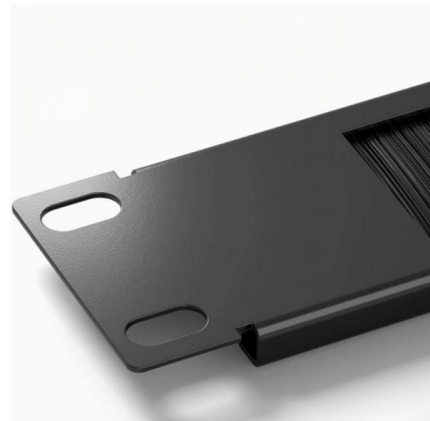
Cable Tray Technical Guide A practical guide to product selection and

Cable tray length is selected based on the load to be supported, the distance between the supports (also referred to as the span), and handling and installation constraints.



Electrical cable Tray Installation Details with Support

Comprehensive technical drawing illustrating various cable tray installation details for electrical systems. The document includes multiple configurations for mounting



Cable Tray Spacing Standards for Installation and Safety

Key Factors Impacting Cable Tray Spacing
Understanding cable tray spacing is key to meeting safety regulations and maintaining system

Rooftop Cable Tray Support System

PHP's cable tray support system is engineered to sustain various sizes of cable runs on your rooftop. PHP is the leader in cable tray support systems.



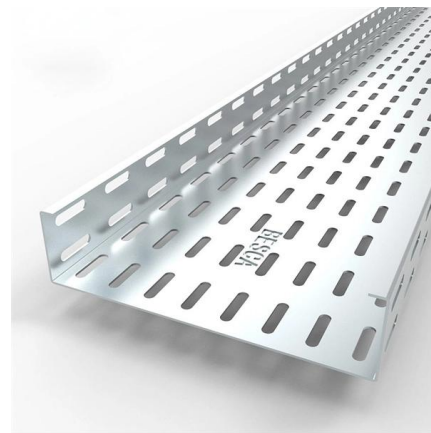
CABLE TRAYS GENERAL INFORMATION AND

Cable tray systems are to be installed so they are accessible. If possible 300mm minimum should be left above or between installed systems to allow for cable



B-Line series Cable Tray Design Considerations

Our wind certification report provides you with list of acceptable B-Line series cable tray supports, fittings and covers based off of the environmental conditions, cable loading, and type of cable tray in your



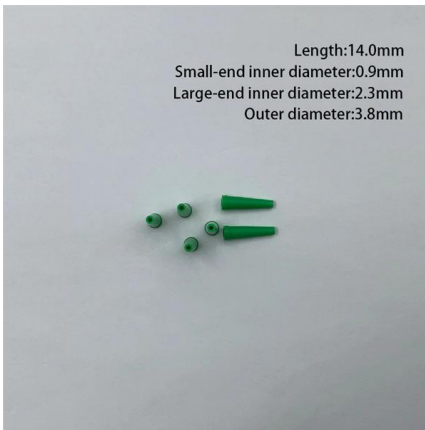
A Guide to Installing and Supporting Electrical Cable Trays

This guide covers the critical steps, from selecting the right electrical cable tray and performing accurate cable fill calculations to managing a safe cable pull through

Best Practice Guide to Cable Ladder and Cable Tray Systems

The fixings used to connect the cable ladder and cable tray support systems to the primary supports also need to be checked to ensure that they are strong enough.





Decoding Cable Tray Support Structures: Tips and Insights

Discover efficient cable tray support structures for optimal cable management. Learn about hanger, wall-mounted, and Unistrut systems for safer

SWIFTS CABLE TRAY

In addition to the cantilever arms listed, there are many other specialist support brackets for use with cable tray T these are detailed in the relevant sections in this catalogue

DETAILS DISPLAY

Focus On Every Detail



Technical Specification for Cable tray installation and cable laying work

Technical Specification for Cable tray installation and cable laying work Scope :- This specification covers the following major activities; Fabrication and installation of Mild Steel (MS) support structure

Best practice guide to cable ladder and cable tray

Cable ladder and cable tray systems The following recommendations are intended to be a practical guide to ensure the safe and proper installation of



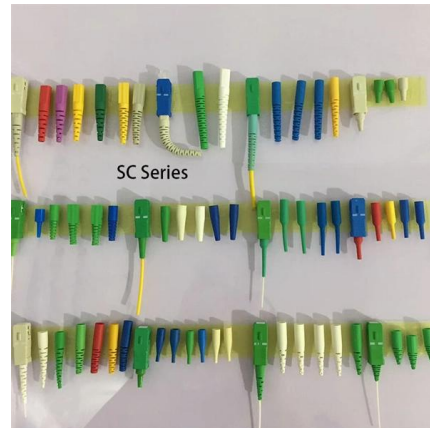
CABLE TRAY SYSTEMS GUIDE

Some applications may require the cable tray to support the weight of a single, dead object in addition to the cable loads. Specifications typically require this to be applied at the midpoint of the span between



Guide to cable support systems

The cable support lengths and fittings can basically be designed as cable trays, cable ladders or mesh cable trays, in which cables are routed. On the one hand, fittings can be used for horizontal or



Best Practice Guide to Cable Ladder and Cable Tray Systems

This guide covers cable ladder systems, cable tray systems, channel support systems and associated supports intended for the support and accommodation of cables and possibly other electrical





Cable Tray Systems: Requirements and Best Practices

Comprehensive guide to cable tray systems requirements: tray types, materials, loading, supports, bonding, routing, and best practices for safe electrical cable management.



LEGRAND CABLE TRAYS TECHNICAL GUIDE

In accordance with its continuous improvement policy, Legrand reserves the right to change the specifications and illustrations without notice. All illustrations, descriptions and technical information

CABLE TRAY SYSTEMS GUIDE

Steel Ladder System Hubbell's NEXTFRAME® Ladder Tray is the effective and widely used cable runway that supports and delivers bundles of cable between cabinets, racks, and closets, along



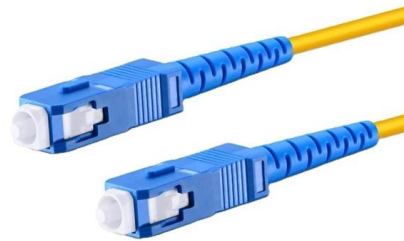
Cable Tray Support Spacing: Key Guidelines Explained

Explore the essential cable tray support spacing requirements for safe and efficient installations. Learn NEC guidelines for perforated, ladder, and wire



100+ Essential Questions Answered About Cable Trays:

Discover over 100 expert answers about cable trays, covering key topics like material selection, load capacity, installation methods, and maintenance.



TECHNICAL GUIDE

POSITIONING OF THE SUPPORTS Changes of level and direction: Put supports in place before there is any deflection of the cable tray route. It is recommended to place supports at the start and end of

GUIDE CABLE TRAYS TECHNICAL

In accordance with its continuous improvement policy, Legrand reserves the right to change the specifications and illustrations without notice. All illustrations, descriptions and technical information





Cable Tray Supports

Cable tray supports are indispensable for creating a reliable and efficient cable management system. Whether wall-mounted, ceiling-suspended, or floor

Contact Us

For datasheets, pricing, or custom telecom energy solutions, please visit:
<https://www.koskolong.co.za>