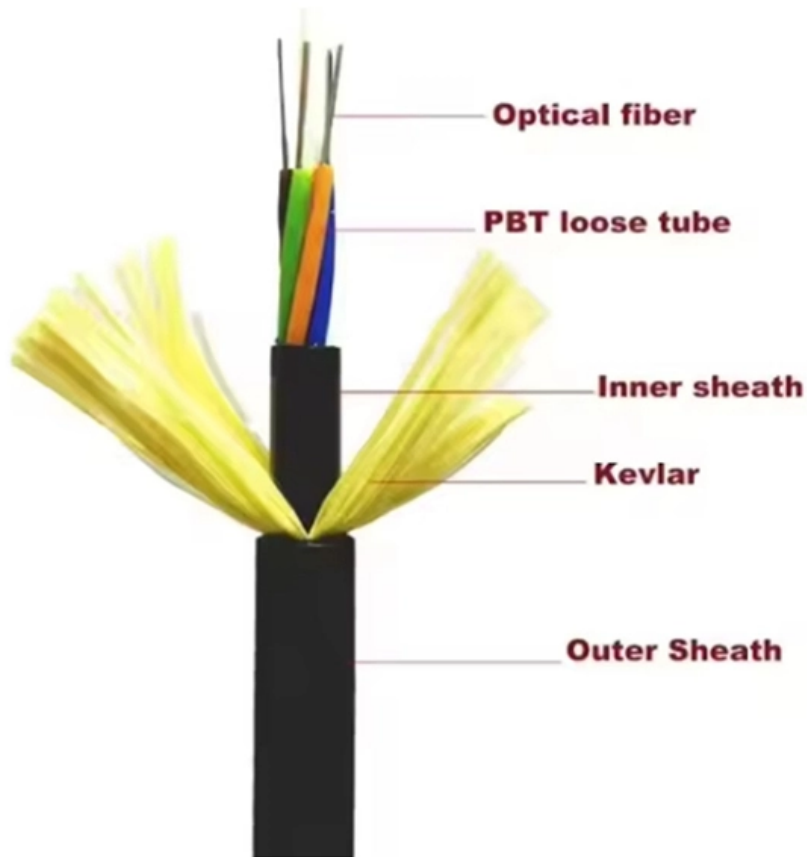




**Adam Tas Corridor Energy**

# **Thailand Cable Tray Seismic Bracing Standards**





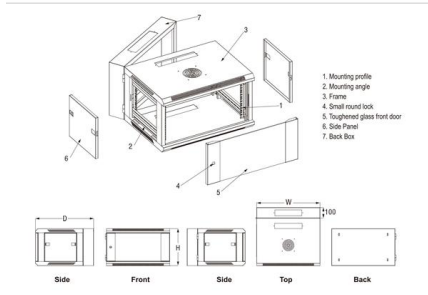
## Overview

---

This study aims to develop a simple yet efficient performance-based design optimization methodology for cable tray systems in building structures.



## Thailand Cable Tray Seismic Bracing Standards



### Cable Tray and Conduit System Seismic Evaluation Guidelines

A number of shake table tests on portions of cable tray and conduit systems confirm these observations from past earthquakes and demonstrate that typical configurations perform well under repeated high-

### Seismic and cable tray solution flyer

Our team of experts can help you select the best cable tray series for your application, as well as designing your seismic bracing layout to ensure it meets applicable building codes and standards.



### KR20210130082A

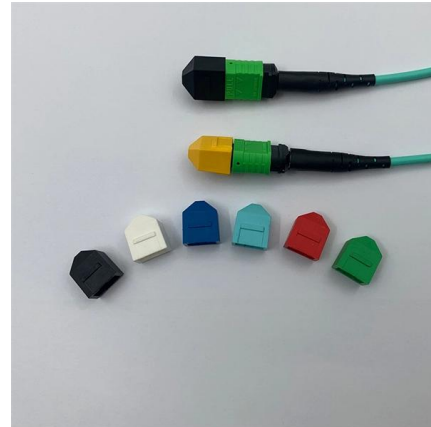
More particularly, it relates to a seismic device of a cable tray, a conduit tube, and a bus duct support that effectively absorbs shock or

### Seismic Restraints (Full)

All linear runs must have minimum two transverse seismic restraints and one longitudinal seismic restraint. A run is defined as a 1.5m length for duct and 3m length for any other linear non-structural

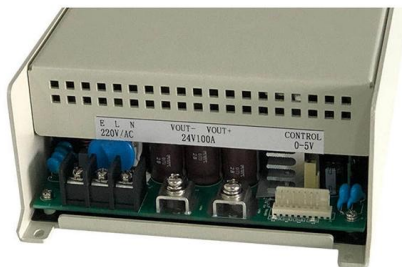


vibration caused by an earthquake.



### nVent CADDY Seismic Cable Bracing Solutions

International seismic standards accept the use of both cable and rigid bracing. Cable bracing has the advantages of being versatile, lightweight and easily transportable.



### Why do 150N/m Cable Trays Require Seismic Bracing?

How Are the Weights of Cable Trays and Cables Calculated? To determine if a cable tray requires seismic bracing, the key is to calculate its weight per meter. Let's break down the calculation



### Seismic analysis and design of electrical cable trays and support

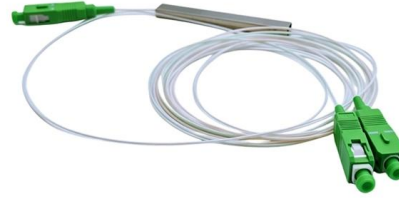
Most cable trays in nuclear power plants are classified as seismic category I components. Current safety requirements dictate that all such components be adequately designed in order to





## Rev 7 to Procedure SAG.CP3, "Seismic Design Criteria for Cable Tray

The design requirements for seismic Category I structure are delineated in Regulatory Guide 1.29. This document provides the seismic design guideline for cable tray hangers of Comanche Peak Steam

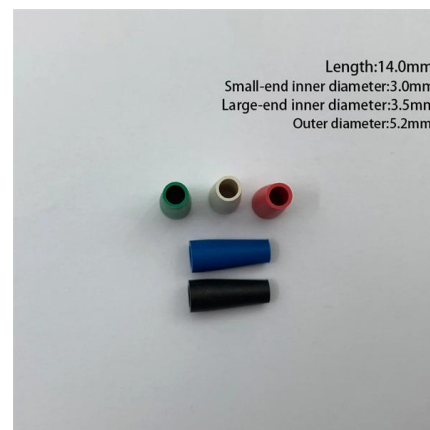


## Seismic and cable tray solution flyer

Eaton's B-Line series cable tray with TOLCO seismic bracing is the recommended total solution for your project. Our cable tray, bolted framing, and seismic bracing are approved as one system through

## SEISMIC BRACING OF A DISTRIBUTED CABLE TRAY SYSTEM

The cable trays have diagonal bracing between layers of cable trays in the longitudinal direction using proprietary steel members and connected using bolts and clamps.



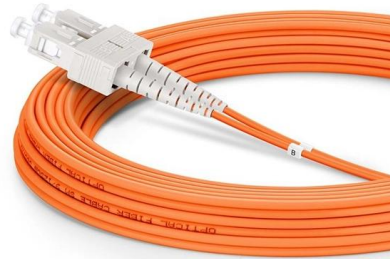
## Strut & Fittings

Commonly known as 12 gauge standard or deep slotted channel, it is the global standard for strut metal framing. This channel is commonly used for trapeze



### Westinghouse AP1000 Design Control Document Rev. 19

Institute of Electrical and Electronic Engineers (IEEE), Standard 344-1987, IEEE Recommended Practice for Seismic Qualification of Class 1E Equipment for Nuclear Power Generating Stations



### Seismic Bracing Systems for Cable Trays Catalog

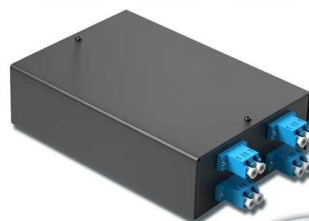
All our seismic Wire Rope/Cable(TM) bracing, complies with model building codes, and installs in just one-third the time needed for more conventional pipe, angle, and

### The shake on seismic bracing

Seismic bracing against the wrath of earthquakes is an increasing concern for today`s data-communications and telecommunications cable installer, and efforts

4-port 8-core LC wall-mounted fiber terminal box (empty frame)

Surface painted    Scientific plate fiber    Cold-rolled steel plate



Lifetime quality assurance

Free shipping

Customizable for telecommunications



## Understanding Seismic Support for Electrical Installations

Explore the essential guidelines for seismic support in electrical installations, focusing on cable trays and their critical role in ensuring system safety during earthquakes. Learn about key spac

### Seismic Catalog

Seismic bracing shall not limit the expansion and contraction of systems; the engineer of record shall ascertain that consideration is given to the individual dynamic and thermal properties of

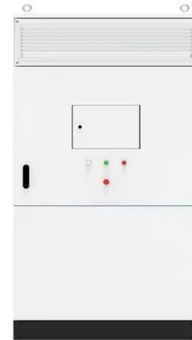


### Seismic

Source: Seismic restraint of engineering services, Government of South Australia, Department of Planning, Transport and Infrastructure) 2nd step: Determine whether seismic bracing of engineering

### Seismic fragility analysis of suspended cable trays in civil buildings

This study aims to understand the seismic fragility of typical suspended cable trays in civil buildings through full-scale shaking table tests and numerical simulation. Based on the shaking table



## EARTHQUAKE PROTECTION

Pipe, Cable Trays, Bus Ducts & Conduit Bracing  
Details Cable Bracing SWIVEL FASTENER (TYP.)  
SEISMIC TENSION LOAD (REACTION) STIFFENER  
CLAMP STIFFENER CLAMP HANGER ROD



## Installing Seismic Restraints for Electrical Equipment

INSTALLING SEISMIC RESTRAINTS FOR ELECTRICAL EQUIPMENT Notice: This guide was prepared by the Vibration Isolation and Seismic Control Manufacturers Association (VISCMA) under



## Seismic Bracing Ensures Stability and Safety of Cable

Seismic Bracing - Enhancing System Stability and Seismic Resistance Seismic bracing, typically made of high-strength metal, is key component specifically





## Performance-based optimum seismic design of cable tray system

The seismic performance levels of cable tray systems are presented according to current seismic design codes.



## Cable Tray and Conduit System Seismic Evaluation Guidelines

Rigid-mounted conduit and cable trays are inherently very stable and subject to minimal seismic amplification. A detailed dead load design review of these systems provides ample margin for

## Seismic Bracing Systems

Seismic bracing systems, are developed to prevent possible damages in the building installation, especially during natural disasters



## Cable & Pipe Supports

In Australia, seismic compliance is mandated by Section 8 of AS1170.4 (2007). EzyStrut offers a range of seismic solutions that comply with AS1170, and our one-stop range of seismic bracing, cable tray



## PROFESSIONAL SEISMIC BRACING SOLUTION

Seismic bracing is a reinforcement added to a structure to prevent collapse or deformation of building elements as a result of earthquakes. Therefore, it can effectively release the



## Understanding the Seismic Resistance of Cable Trays

This article discusses the importance of seismic resistance for cable trays, detailing when seismic braces are necessary, the factors that affect seismic

## Contact Us

---

For datasheets, pricing, or custom telecom energy solutions, please visit:  
<https://www.koskolong.co.za>