



**Adam Tas Corridor Energy**

# **The Role of Managing Aggregation Switches**





## Overview

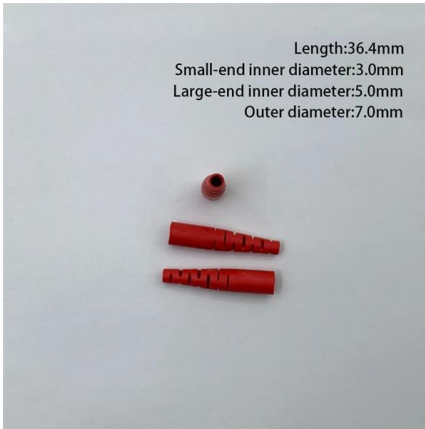
---

By combining multiple switches into a cohesive system, organizations can improve efficiency, scalability, and management. This approach is increasingly vital as data volumes grow and network complexity rises. The three layers of a traditional three-layer network design are the core layer, aggregation layer, and access layer. Switch aggregation, also known as link aggregation or trunking, is a method used in computer networking to combine (aggregate) multiple network connections in parallel.



## The Role of Managing Aggregation Switches

---

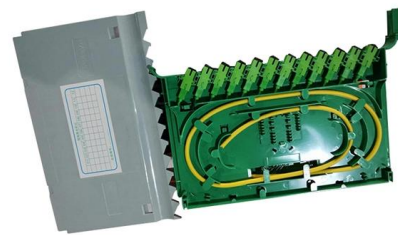


### CMU School of Computer Science

å 10 ä ,EURå ?ä , ? 10 ä ,EURç(TM)¾ 100  
ä ,EURç(TM)¾å? 100 ä ,EURå ? 1000 ä ,EURå  
?å? 1000 ä ,EURâ--<ä ,EUR 101  
ä ,EURç(TM)¾é>¶ä

### What Is an Aggregation Switch?

What Is an Aggregation Switch? Unveiling the Network's Backbone An aggregation switch is a powerful networking device that consolidates connections from multiple access switches,



### SUERF

- The European Money and Finance Forum SUERF is an independent, non-profit network association of central banks, supervisors, financial institutions, academic

### The Importance of Using an Aggregation Switch in LAN Designs

When designing a Local Area Network (LAN), ensuring stability, performance, and scalability is



crucial. One of the best approaches to achieving these goals is by using a central

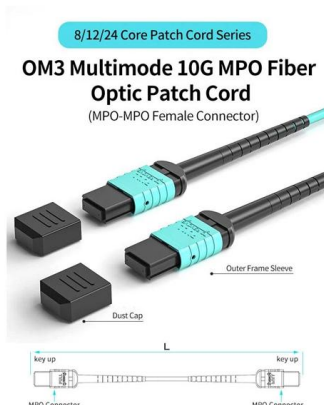
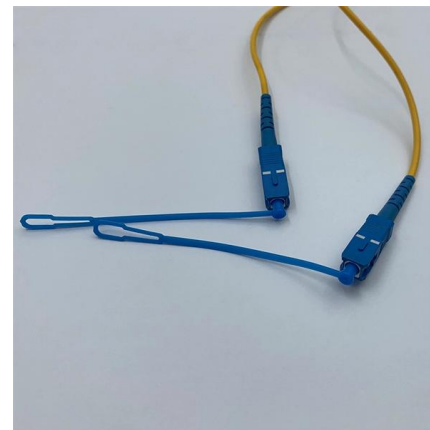


### Aggregation Switches

Aggregation switches consolidate data traffic from multiple network access switches into a single high-bandwidth link to the core network. In the

### Understanding Switch Aggregation: A Comprehensive Guide

In the context of network architecture, switch aggregation is an essential element, particularly in building high-capacity, resilient networks. It allows multiple switches to operate and be



### Aggregation Switch

An aggregation switch refers to a type of switch used to connect multiple ToR switches to a core switch/router in a cloud data center network. It enables high-bandwidth aggregation ports to be



## Understanding the Role of Aggregation Switch in

Each aggregation switch undergoes extensive testing to ensure that it meets the highest standards of reliability and performance. Conclusion In



## Configuring Aggregation and Access Switches to Be Managed by the

On the core switch, configure a management subnet for aggregation and access switches, enable the DHCP server function on the gateway interface of the subnet, and enable the

## What is an Aggregation Switch?

What is the Role of the Aggregation Switch in the Network? The aggregation switch is located in the middle of the network architecture, which is



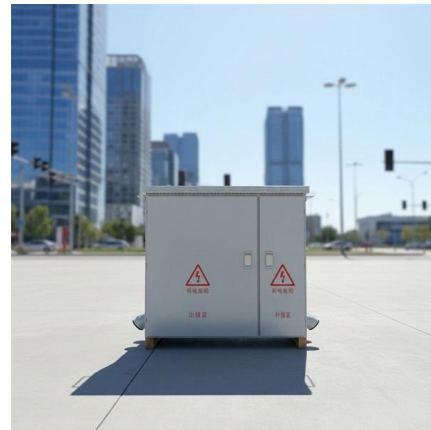
## Understanding the Role of Aggregation Switch in

Aggregation switches, often referred to as distribution switches, play a pivotal role in the hierarchical network architecture. These switches serve as



## What Is an Aggregation Switch and How to Choose?

Aggregation switches play a crucial role in network management by consolidating and simplifying traffic from access switches. Positioned between the access and



## What Is an Aggregate Switch?

Discover the role of an aggregation switch and its function in a network. Explore differences between aggregation, access, and core switches.

## In-depth analysis: What is an aggregation switch?

In many network constructions, we have all heard of switches. So do you really understand switches? Why are aggregation switches often overlooked?





## Core, Aggregation, or Access Switches? Choose the

Discover the crucial differences between core, aggregation, and access switches. Find out which type can best transform your network's

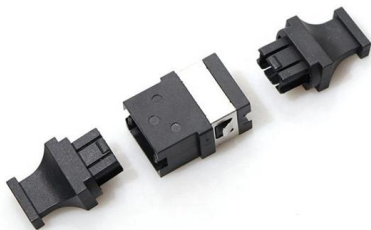
### What is Switch Aggregation, Its Role and Selection Advice

When an aggregation switch receives data from access switches, it performs local routing, filtering, load balancing, and QoS priority management. It also handles security mechanisms,



### Why You Need a Fiber Aggregation Switch and How it

By managing numerous connections from access switches, these types of switches play a significant role in reducing congestion within networks,



### What is an Aggregate Switch?

The aggregate switch plays a critical role in ensuring network performance and reliability. These switches are placed strategically within the network architecture to reduce bottlenecks,





## How Switch Aggregation Works -- In One Simple Flow

Switch aggregation is transforming how networks handle data traffic. By combining multiple switches into a cohesive system, organizations can

## Aggregation Switches 101: Enhancing Security and Performance

Explore the key functions of aggregation switches, including routing, security, QoS, and redundancy, essential for scalable network design.



## What is an Aggregation Switch?

Usually, when the aggregation switch receives data from the access switch, it will perform local routing, filtering, traffic balancing, and QoS priority

## What is Aggregation Switch? Role in Network Connection

Aggregation Switch plays an important role in the aggregation layer, supporting the connection and management of traffic from different network devices.



## How To Set Up Switch Link Aggregation

In this article, I'm going to describe how to set up Link Aggregation between two managed switches to provide connectivity, redundancy, and expanded

## Contact Us

---

For datasheets, pricing, or custom telecom energy solutions, please visit:  
<https://www.koskolong.co.za>