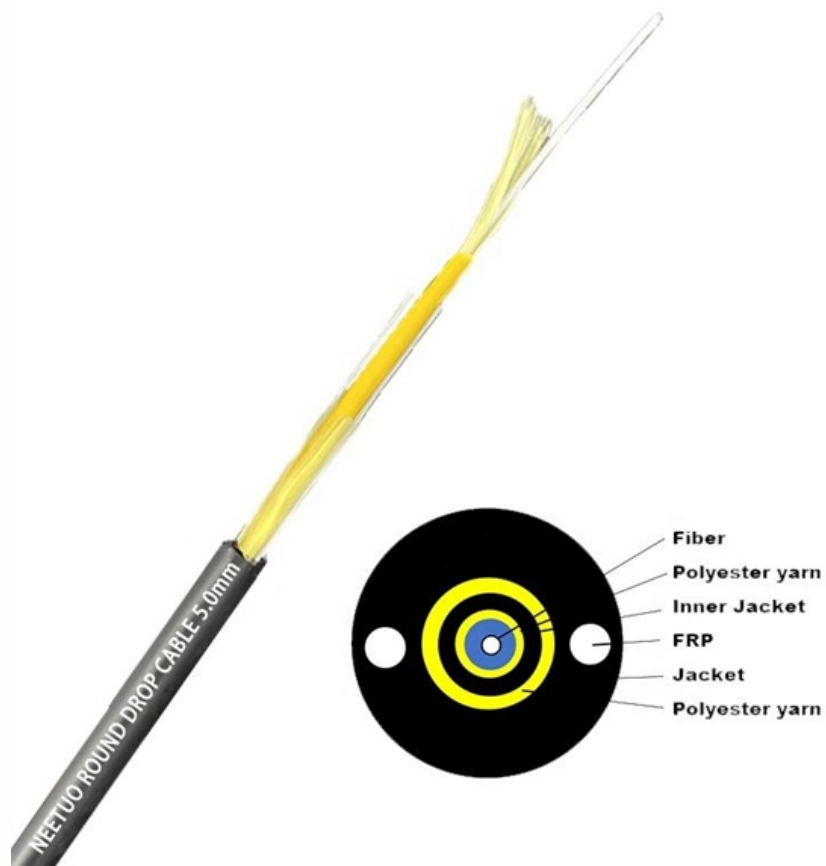




The assembly method of the terminal box is as follows





The assembly method of the terminal box is as follows



Construction and working principle of terminal box

Terminal box is a common electrical connection device, which is widely used in electrical control systems, distribution systems, and various electronic devices. Its main function is to facilitate the

Box Build Design Guide , Komaspec

Box build design is an aspect of product design focused on electrical assemblies where the components are fully integrated into a standalone



Terminal Boxes Series SM2

The terminal boxes Series SM2 consist mainly of a flanged casing, closed by a cover, inside which are mounted the terminals. One end of the terminal is wired inside the transformer tank while the other

AGN 037 - Terminal Arrangements

With the output terminal assembly (and terminal box) being part of the frame construction of each design of alternator, this whole terminal area will



move in sympathy with the complete engine-alternator



AOC
QSFP28 to 4*SF28
100G
OM3/OM4



Box Build Assembly: An Ultimate Guide for Beginners

Box build assembly is the process of assembling and integrating electronic components into a fully functional product inside an enclosure.

Electric motor terminal block assembly

Electric motor 2includes a terminal board or block assembly 70 arranged in terminal box 24 at terminal passage 50 . Terminal block assembly 70includes a terminal block portion 80 positioned along first



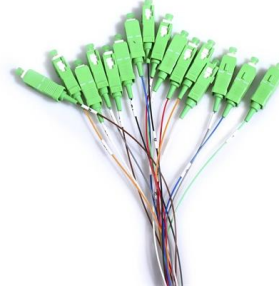
Construction and working principle of terminal box

Identification system: For the convenience of identification and management, terminal boxes usually have a labeling or labeling system to indicate the purpose



Siemens TEC Terminal Box Controller

The Terminal Box Controller consists of an electronic controller assembly and a differential pressure transducer. This controller provides all wiring terminations for system and local communication and



Motor terminal box connection methods and procedures

Jim Bryan (retired) EASA Technical Support Specialist As with most tasks, there are many ways to terminate motor leads and each one has a following who believe it

Terminal block production and installation tutorial: from beginner to

Terminal blocks are the core components of electrical connections, widely used in distribution boxes, control cabinets, and equipment circuits. Mastering its production and installation techniques can



The Complete Guide to Box Build Assembly Process

Box Build Assembly in California: Center for Excellence It leads California to stand as a great state that follows the trends of box build assembly



What Is Box Build Assembly? A Complete OEM Guide , ANZER

Discover what Box Build Assembly is and how it streamlines OEM production. Learn ANZER's proven process for complete system integration and quality manufacturing.



Manufacturing Process of Electrical Terminal Boxes

Electrical terminal boxes are a critical component in the safety, organization, and protection of electrical systems. Whether you're looking for a junction box, an

Assembly line

An assembly line, often called progressive assembly, is a manufacturing process where the unfinished product moves in a direct line from workstation to



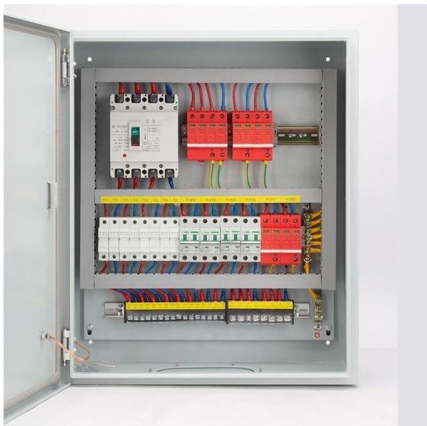


Terminal block production and installation tutorial: from beginner to

Summary: The production of wiring terminals should follow the three principles of "precise wire stripping, firm crimping, and reliable insulation", and pay attention to layout specifications and clear labeling

Terminal Control Boxes: An Integral Component for Streamlining

Terminal Control Boxes are an integral component in modern industrial automation and control systems, functioning as an efficient and streamlined method of organizing and managing



Reassembly Method of Terminal Boxes and Copper Bars

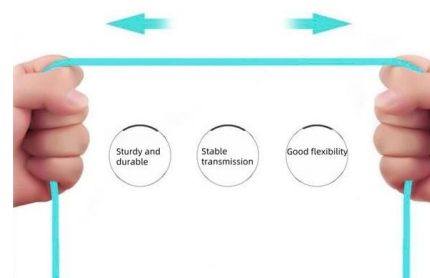
2. Paste Thermal Insulation After installing the terminal box, need to paste thermal insulation inside the terminal box. A piece of insulation will be sent along with the

Basics of x86 assembly (AT& T syntax)

Basics of x86 assembly (AT& T syntax)
Nowadays, application of programming in assembly language is very small. Writing production code in

More durable and robust

The outer layer is made of environmentally friendly PVC, which is soft and elastic. It can be stretched without damage, so you can use it with confidence.



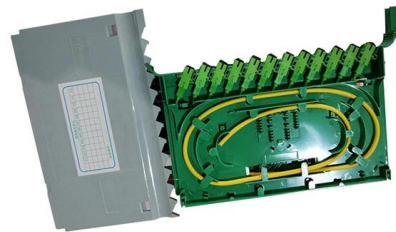


Box Build Assembly Explained

Box Build Assembly, a critical phase in the manufacturing of electronic devices, is a meticulous process involving the integration of various

Everything You Wanted To Know About Box Build

Testing phase Following assembly, the product is tested to make sure it satisfies the necessary requirements. Functional, performance and



Terminal and Junction Boxes Selection Guide: Types, Features

Description Terminal and junction boxes are used to house electrical components and facilitate wiring. Selection Considerations When selecting terminal or junction boxes, correct size and adequate

Motor terminal box connection methods and procedures

Jim Bryan (retired) EASA Technical Support Specialist As with most tasks, there are many ways to terminate motor leads and each one has a following who believe it is the best method. Here we will



Switchboard

IEC 61439 'Low-voltage switchgear and controlgear assemblies', specifies standard arrangements of switchboard (call forms of internal



Mastering the Essentials of Box Build PCB for Efficient

Build PCB for Efficient
Discover the fundamentals of box build PCB assembly in this comprehensive guide. Learn key techniques, tools, and best practices for efficient design and



Aalborg Universitet The Box Method a Practical Procedure for

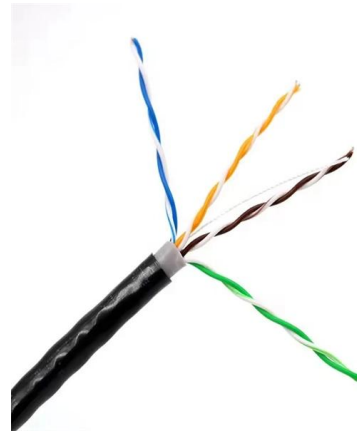
The Box Method - a Practical Procedure for Introduction of an Air Terminal Device in CFD Calculation by Peter V. Nielsen Aalborg University





Motor terminal box connection methods, procedures

As with most tasks, there are many ways to terminate motor leads and each one has a following who believe it is the best method. Here we will discuss some of these procedures and outline a few of the



METHOD STATEMENT FOR TTC TERMINAL INSTALLATION AND

This cabinet is flush mounted with labeling sheet equipped with relevant terminal block and have 20 % spare for future expansion and wiring for extra terminal blocks. Terminal block are of Krone make

Manufacturing Process of Electrical Terminal Boxes

Once the terminal box casing is ready, it is fitted with internal components such as terminal blocks, screws, and wiring connectors. These are carefully arranged to



Contact Us

For datasheets, pricing, or custom telecom energy solutions, please visit:
<https://www.koskolong.co.za>