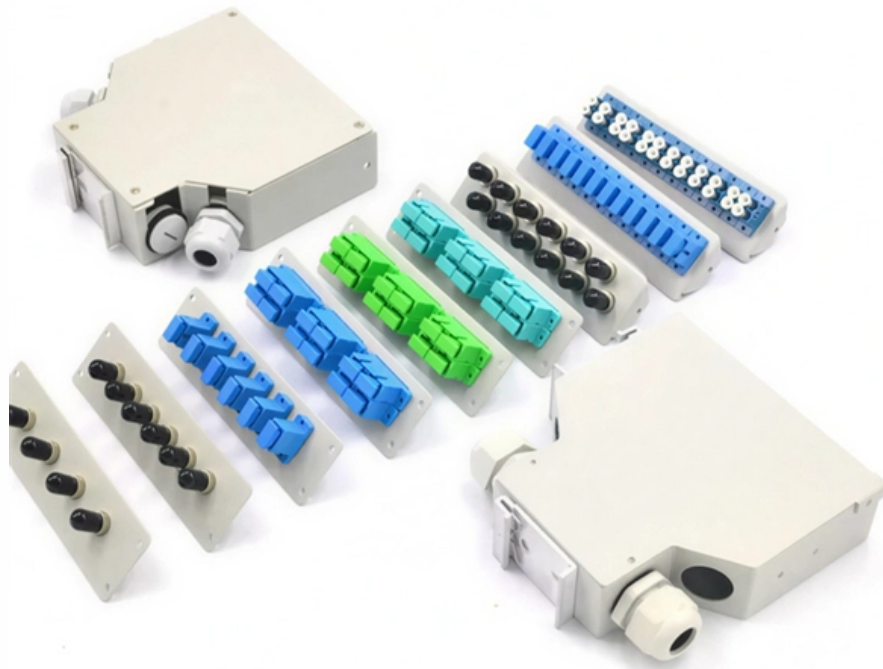




**Adam Tas Corridor Energy**

# **The cable is too thick to fit into the distribution box**





## The cable is too thick to fit into the distribution box

---

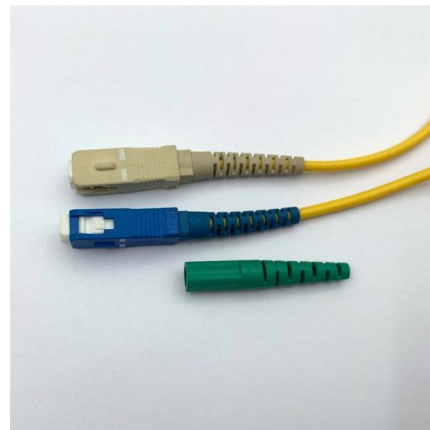


### How to Install a Distribution Box--A Comprehensive

Choose the Best Position for Installing Before starting the installation, finding a proper place for putting the distribution box is crucial, because it largely

### How to solve and prevent the failure of the distribution

During the construction and installation process, the methods to solve and prevent the failure of the distribution box include: Quality inspection: Make sure the



### Connecting thick cables to small terminal

What would be the proper engineering way to reduce the diameter



## DISTRIBUTION BOX

The gauge of the cable connecting the DISTRIBUTION BOX to another unit must be at least the same as the incoming cable gauge. If



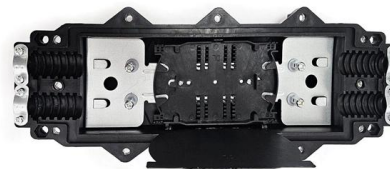
the DISTRIBUTION BOX is connected to another



That is a shielded cable. The shielding makes the cables thicker and harder to deal with. Very technically you need special RJ45 ends to connect to the cable so the shielding will work .

### 12v wire too thick for distribution box : r/vandwellers

Thanks in advance for any suggestions you may have. I'm currently wiring the 12v distribution panel for our van. There is one circuit that uses 6awg wire. (stranded, of course). This circuit is for the diesel



### How do I put RJ45 ends on thick outdoor rated CAT6

Now I've terminated my fair share of CAT6, but I can't seem to get the jacket of the outdoor rated cabling to fit inside the RJ45 connector. The outer



## Cable Distribution Box, Outdoor Cable Junction Box

DOHO is a leading cable distribution box manufacturer and supplier. We cater to applications including industrial, data center, security, and telecommunications.



## ITPro Today, Network Computing, IoT World Today combine with

ITPro Today, Network Computing and IoT World Today have combined with TechTarget . The page you are looking for may no longer exist.

## Step-by-Step Guide to Install MCB Distribution Box

Learn how to safely install an MCB distribution box with this comprehensive guide. Step-by-step instructions to ensure correct installation.



## Understanding Distribution Boxes: A Comprehensive Guide

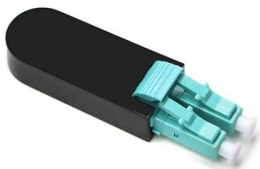
A distribution box, also known as a power distribution box or electrical distribution box, is used to distribute electrical power safely to multiple



Network Cabinet & Rack

### Getting wires to fit in the box?

For wires that are not connected to the device, bend them so they curve around the inside edges of the box and push them flat towards the back. For wires that connect to the device, bend

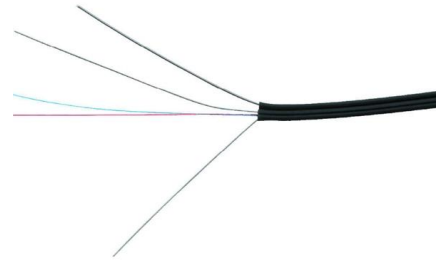


### Power Distribution , Troubleshooting

Use a volt meter to measure voltage at the power supply and at the power distribution box. Be sure that the power distribution box has sufficient power provided to it. Long cable runs can result in a voltage

### Distribution Box Wiring Steps

?Wiring and Binding? ?Wiring Direction?: Wiring between the main circuit breaker and each branch circuit breaker in the box generally goes on the left, and



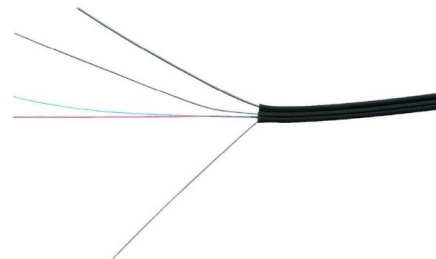
### The installation requirements for the distribution box

A clean and well-wired distribution box isn't just nice to look at -- it's essential for safety, performance, and easy maintenance. Here are a few best



### Troubleshooting Tips: When Your HDMI Cable Won't Fit

HDMI Cable Won't Fit in TV: Cable Compatibility and Connection Problems Have you ever been excited to set up your brand new TV or gaming



### Optical Cable Distribution: Efficient How-To Guide

Learn how to efficiently manage and distribute optical cables using a fiber distribution box. Explore protective sheath and organized distribution.





## Wires too thick to fit in replacement light fitting

The problem I have is that although the single switched live will fit into the relevant terminal, the three neutrals twisted together are too big to fit. What is the correct procedure here?

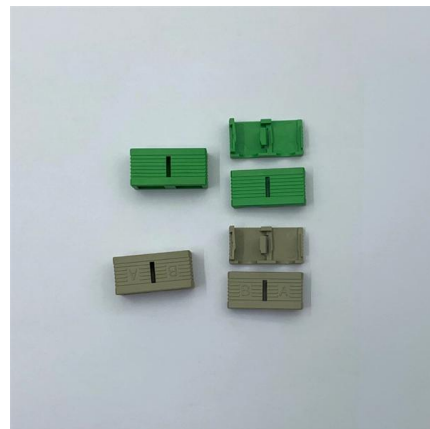


## WORLD WIDE WEB JOURNAL Home

will open to start the export process. The process may take but once it finishes a file will be downloadable from your browser. You may continue to browse the DL while the export process is in

## The Complete Guide to Distribution Box: Installation, Types & More

What's the difference between a distribution box and a sub-panel? A distribution box typically refers to the main electrical panel that receives power from the utility service. A sub-panel is



## Are there any tricks to getting everything to fit inside of a

Trim every wire that comes into that box to about 7" length. That allows you to fold the wire into the box with one 180-degree bend.



## Tips to Put RJ45 Connectors on Thick Ethernet Cable

Your cable may still be difficult to get into the RJ45 connector. The way to get around this issue is to "ovalize" the last 1/2" of the Ethernet cable jacket just



## Cable Not Fitting Your Connector? Try This Simple Trick! 2024

Follow along with our Technical Expert, Don, as he breaks down how you should go about doing ovalization to ensure your cable will fit into the connector properly, and how to not damage your cable

## The installation requirements for the distribution box

Learn how to install a distribution box safely and correctly. Covers wiring, placement, standards, and expert tips for a compliant setup.





## How to install a Structured Wiring + Cable Distribution Box

How to install a Structured Wiring + Cable Distribution Box All About Home Electronics 163K subscribers Subscribe

## [unsupervised\\_topic\\_modeling/topics/en/15/100/50/topics at master](#)

Contribute to annontopicmodel/unsupervised\_topic\_modeling development by creating an account on GitHub.



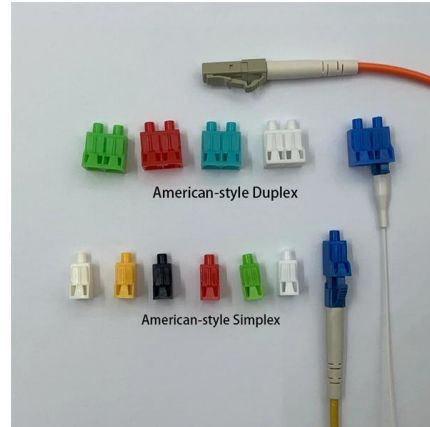
## What to Do When an Ethernet Cable Won't Fit in the Wall

Comprehensive guide to fitting Ethernet in walls. Solve physical routing problems, manage tight conduits, and fix jack incompatibility issues.



## The Existing Cable is Too Short, What to Do?

A question about what to do when the cable is too short to reach the new junction box location when replacing a range hood fan.



## Contact Us

---

For datasheets, pricing, or custom telecom energy solutions, please visit:  
<https://www.koskolong.co.za>