



Adam Tas Corridor Energy

The construction cables were not run through cable trays





The construction cables were not run through cable trays



Cable Tray Manual: NEC Article 392 Guide

Step 4. To determine the required expansion joint gap setting at the time of the cable tray's installation: Plot the cable tray metal temperature at the time of the cable

2005

Where a cable tray wiring system containing Type TC cables will be exposed to any significant amount of hot metal splatter from welding or the torch cutting of metal during construction or maintenance



Do Tray Cables Need to Be in Conduit? A Complete Guide

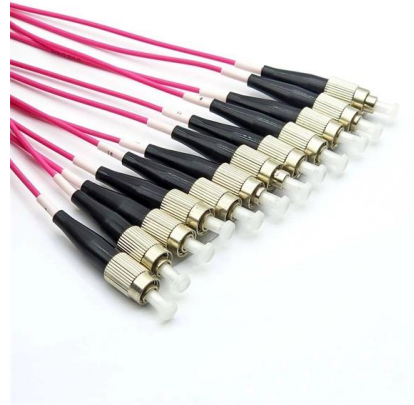
Tray cables (TC, TC-ER, and similar types) are specially designed for use in cable tray systems, which support multiple runs of cable across industrial and commercial buildings. Conduit,

Stumped by the Code? NEC Rule Regarding Cable Tray

What is the NEC rule regarding the continuity of cable tray systems and their accessibility? A.



Cable trays must be installed as a complete system,



Understanding NEC Article 392

Routing hundreds of cables through standard rigid conduit is often physically impossible and financially impractical. This is where cable tray systems become an absolute necessity for

Cable Tray Manual: NEC Article 392 Guide

In-depth guide to cable trays, focusing on NEC Article 392. Covers types, selection, installation, and safety standards for electrical systems.



A Guide to Installing and Supporting Electrical Cable Trays

A professional guide to installing electrical cable tray systems per NEC Article 392. Covers support, securing cables, and fill calculations.





Cable Tray

Those two sections will tell him how to handle tray fill calculations and ampacity rating for cables 2000V or less, regardless of the composition of cable sizes that are in the tray.



Cable Tray SHIB NAL

Overloading cable trays can lead to a breakdown of the tray, its connecting points, and/or supports, causing hazards to persons underneath the cable tray and even leading to possible electric shock

Cable Trays In Hazardous (Classified) Locations , Cable Tray Institute

Cable trays were added to the combustible dust section (Class II) of the 1987 NEC in section 502-4 wiring methods. Cable types MI, MC, PLTC, or TC were permitted in ventilated channel tray in a



NEC Article 392: Cable Tray Systems

It defines cable trays and their components. It provides rules for

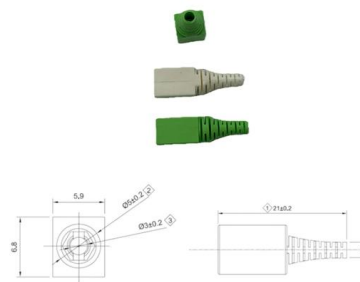


Ordering Information

Model	1	2	3	4	5	6
Product name	Patch Panel	Patch Panel	Patch Panel	Patch Panel	Patch Panel	Patch Panel
Illustration						
Model	1	2	4	1	2	4
Maximum number of cores	144	288	576	144	288	576
Product size (including module and adjuster)	482.87/271.17/144 mm	482.87/271.17/288 mm	482.87/271.17/576 mm	482.87/271.17/144 mm	482.87/271.17/288 mm	482.87/271.17/576 mm
Standard color code	RAL9005	RAL9005	RAL9005	RAL9005	RAL9005	RAL9005

Types of Cable Typically Used in Cable Tray

Type ITC - Instrumentation Tray Cable - (NEC Article 727) - These types of cables are instrumentation cables and are available in shielded or unshielded



Cable Tray Penetrations: Problem Solved!

Almost always in evidence were fire stopping problems and issues around cable tray penetrations. Cable trays seemed to run through fire rated barriers with reckless abandon; the holes created by

Prevent Fire and Electric Hazards When Cable Trays Used

If not designed and installed properly, wiring inside cable trays may pose hazards such as fire, electric shock, and arc-flash blast events.



FAQ , Cable Tray Institute

The NEC in section 392.8 (B) indicates that in other than horizontal runs, cables shall be securely fastened to transverse members of the cable trays. For vertical installations, the cables may hang



Cable Trays

Cable trays distribute bundles of electrical cables from power supplies to electrical equipment and components throughout the plant. Cable tray systems consist of insulated electrical cables layered



Understanding Cable Pathways, Cable Conduits, Cable

A cable pathway or raceway is a protective channel or enclosure made of materials like metal or plastic, used to manage and safeguard electrical cables and wires. It



Cable Tray Questions , Cable Tray Institute

Question 1: Can mechanical utility piping or tubing containing water or compressed air be installed in cable trays with electrical cables?
Answer: No. Cable trays are a support system for electrical cables,



Annex I

When cable trays have to run through or under raised floor areas, an easy access all along the cable tray paths in these areas must be kept (no material should be placed or stored on the corresponding

Cable tray

In the electrical wiring of buildings, a cable tray system is used to support insulated electrical cables used for power distribution, control, and communication. Cable





Explaining NEC Article 392 on Cable Trays

Cables and conductors must be secured to the cable tray at intervals according to installation instructions. For non-horizontal runs, cables should be

FactSheet

FactSheet Electrical Safety Hazards of Overloading Cable Trays According to the 2005 National Electrical Code® (NEC), a cable tray system is " unit or assembly of units or sections and



Elevated cable trays

The cable arrangement described seems consistent with what is allowed. You can of course install armored type MC conduit in cable tray or conduit, but that is probably over the top.

Article 392-Cable Trays Flashcards , Quizlet

Metal cable trays containing only nonpower conductors (such as communications, data, and signaling conductors and cables) shall be electrically continuous through approved connections or the use of a



DATA ADJUSTABLE, EASY TO USE



SET INCREASE DECREASE POWER SWITCH

392.46 Bused Conduit and Tubing.

Individual conductors or multiconductor cables with entirely nonmetallic sheaths shall be permitted to enter enclosures through openings associated with flanges from

Contact Us

For datasheets, pricing, or custom telecom energy solutions, please visit:
<https://www.koskolong.co.za>