



Adam Tas Corridor Energy

The distribution box is connected to the public power supply





The distribution box is connected to the public power supply



Electric Power Distribution System Basics

Distribution transformer: A distribution transformer, also called as service transformer, provides final transformation in the electric power distribution

how does a power distribution box work

It is responsible for transmitting electrical energy from the power station to various electrical equipment. In this article, we will explain in detail how



Distribution Boards

Distribution boards, often referred to as electrical panels or breaker boxes, serve as the nerve center of any electrical system. Here we explore the crucial parts of a distribution board and gain insights into

Distribution Box: Types and Functions , Axis-Electricals

A distribution box ensures that electrical supply



is distributed in the building, also known as a distribution board, panel board, breaker panel, or electric panel.



A Definitive Guide To Distribution Boxes

The distribution box acts as the center of power distribution, distributing electricity to all connected devices. A distribution box, also known as a distribution board, panel board, breaker



Wiring of the Distribution Board (Single Phase Supply)

Electrical Wiring Installation of the Distribution Board (Single Phase Supply) (From Utility Pole & Energy Meter to the Consumer Unit. How to Wire Distribution



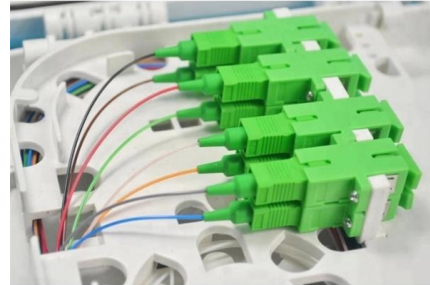
The Meaning and Function of Primary, Secondary, and Tertiary

Connects to end-use equipment via switch boxes, forming a three-tier power distribution system. Residual current devices (RCDs) at both the tertiary (equipment-level) and secondary (zone-level)



Power Distribution Boxes Explained Simply

A power distribution box works like a traffic controller for electricity. It takes in power from the main supply and sends it out to different areas or devices through separate circuits.



Electric power distribution

A 50 kVA pole-mounted distribution transformer
Electric power distribution is the final stage in the delivery of electricity. Electricity is carried from the transmission

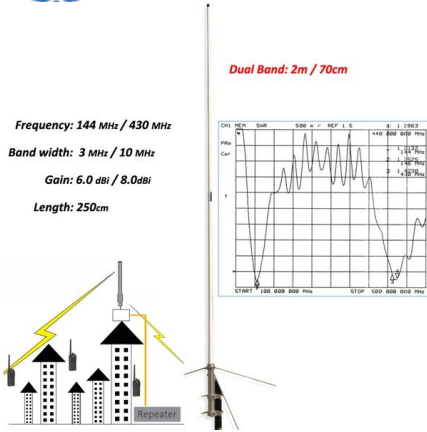
Distribution Boxes: Types and Functions

With one input and several outputs, these boxes allow multiple devices to connect through the distro instead of directly to the power supply. This



Distribution Automation Handbook

3 ELEMENTS OF POWER DISTRIBUTION SYSTEMS
3.14 Primary Distribution Substations A primary distribution substation is the connection point of a distribution system to a transmission or a sub



How does a power distribution box work

The distribution box is a very important component of the power system. It is responsible for transmitting electrical energy from the power station



how does a power distribution box work

The distribution box is a very important component of the power system. It is responsible for transmitting electrical energy from the power station

What is a Distribution Box? - A Comprehensive Guide

A distribution box organizes and controls power flow, ensuring safety and efficiency in electrical systems.





Power Distribution Box Essentials: Functions, Types

Power is fed into the box from the main supply. From there it is distributed into various circuits integrated into the corresponding building. This

What does a power distribution box do ?

The main function of the distribution box is to receive power and distribute it to various circuits. It can protect circuits, regulate voltage, and isolate and control



Understanding Distribution Boxes: Your Guide to Power

A: A junction box is primarily used to connect electrical wires, while a distribution box is designed to distribute power to various circuits. The distribution

What Is an Electrical Distribution Box? A Complete Guide

What Is an Electrical Distribution Box? An electrical distribution box serves as a centralized unit for distributing electrical power within



Distribution box

A distribution box, also known as a fuse box or power distribution box, is the heart of the domestic electrical installation. It is used to distribute the electricity supplied by the energy supplier to the



Distribution Box Guide: Types, Components & Solutions

Understand distribution boxes (DB boxes) in 5 minutes. Learn about types, components, functions, and uses. Find the perfect DB box for your needs.



Explore Power Distribution Box Types and Functions

Power distribution boxes are used in commercial and residential buildings and are part of the electrical system, also known as switchboards.





Explore Power Distribution Box Types and Functions

It integrates power distribution, protection, and monitoring capabilities, and is responsible for distributing power to entire commercial or residential



Power Distribution Boxes Explained Simply

Learn what a power distribution box is, how it works, key components, types, and why it's vital for safe and efficient electrical systems.

Distribution Board vs. Distribution Box: What's the

What is a Distribution Box? A distribution box is a compact electrical enclosure designed to help safely manage local power distribution. It doesn't



The Importance of Distribution Boxes in Electrical Systems

The distribution box is connected to the main power supply for your home or office through a service entrance cable. The box then distributes the



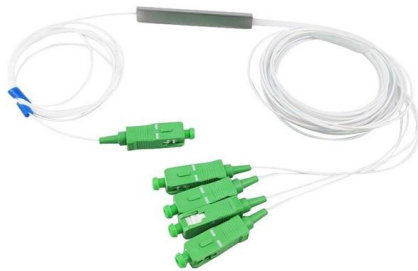
How Does a Power Distribution Box Work

Learn how a power distribution box works step by step--from incoming power to circuit protection and smart monitoring--for safe, efficient electricity delivery.



Understanding Distribution Boxes: Your Guide to Power

Every single type of these power distribution boxes serve to regulate electricity management systems safeguarding the structure against unauthorized



Contact Us

For datasheets, pricing, or custom telecom energy solutions, please visit:
<https://www.koskolong.co.za>