



**Adam Tas Corridor Energy**

# **The function of junction boxes on transmission towers**





## Overview

---

In industrial settings, junction boxes safeguard wiring connections — organizing circuits, shielding against dust/moisture/impact, preventing shorts or shocks, and ensuring stable, code-compliant operation. A junction box is a small enclosure that protects and organizes electrical connections. Distribution boxes, often referred to as electrical distribution boards or panels, are critical elements in both residential and industrial electrical systems.



## The function of junction boxes on transmission towers

---



### What does the Junction Box do?

Junction boxes provide vital protection for electrical connections. They are typically made of durable materials like plastic or metal. The enclosure shields the wires and their connections from external

### The Role of OPGW Joint Boxes in Telecommunications

In conclusion, the unassuming OPGW Joint Box performs an important function in telecommunications and electricity transmission. Because of



### Transmission Towers: Types, Design & Parts , Electrical4U

While both boxes provide essential functions in electrical wiring systems, the junction box is primarily concerned with connection safety and



### Understanding Junction Boxes: Essential Components

VIOX Junction Box B. Importance in electrical systems Junction boxes are essential for



preserving the safety and effectiveness of electrical



### What is a Transmission Tower?

This article explains Transmission Tower covering its definition parts design considerations and different types for power transmission.



### Junction box

Junction boxes form an integral part of a circuit protection system where circuit integrity has to be provided, as for emergency lighting or emergency power lines,



### What is a Junction Box? , Junction Box Uses Explained

What is a junction box used for in a commercial electrical system? We cover the differences in commercial junction boxes and how to choose the





## The Important Role of the Junction Box in Industrial Environments

A junction box shields wire joints from moisture, dust, accidental contact, and physical damage. By keeping connections enclosed, it reduces the chances of corrosion, insulation failure, or

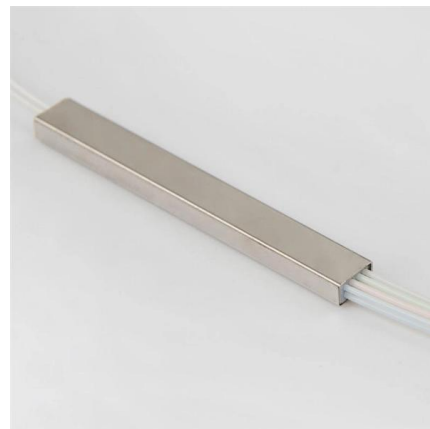


## Understanding What is a Junction Box: Key Concepts Explained

Junction boxes are critical infrastructure--not merely "wire tidy" points. They protect people and property, organize networks, and demonstrate compliance in inspections.

## What Is a Junction Box? Uses & Purpose

A junction box is a protective enclosure where electrical wires meet to distribute power to your ceiling lights, outlets, switches, and appliances. This box



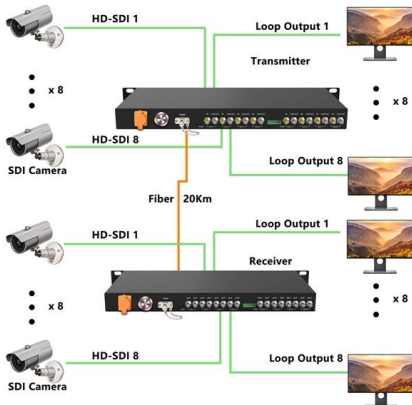
## HV Transmission Line Components (Towers, Conductors, Substations)

The towers and conductors of a transmission line are familiar elements in our landscape. However, on closer inspection, each transmission line has common components with unique



## Understanding the Junction Box: The Cornerstone of

Explore the essential role of a junction box in residential and commercial electrical systems. Learn its uses, key features, and installation tips

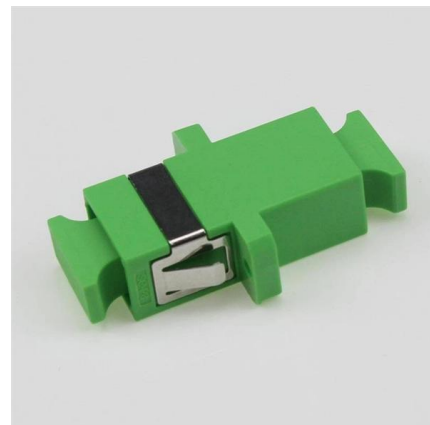


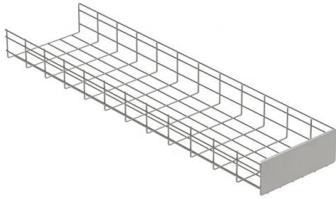
## Design Requirements of Transmission Line Towers

This article provides an overview of transmission line towers, covering their structural designs, functional classifications, mechanical loading

## Junction Boxes , A Complete Guide

The basic function of an electrical junction box is to house and protect wire splices and terminations from detrimental electrical hazards. They also





## Transmission Tower Components , OneMonroe

Transmission towers are essential infrastructure for power distribution networks, and their construction and maintenance rely on durable, reliable components. These structures must withstand extreme

## The Essential Guide to Junction Boxes: Types, Uses,

Unlock the essentials of junction boxes with Vorlane's guide on types, uses, and installation tips for safe and efficient electrical setups.



## What is a Junction Box? A Complete Beginner's Guide

Learn what a junction box is, why it matters, the different types available, and how to choose the right junction box for safety and reliability.

## What Is a Junction Box?

**Purpose and Function of a Junction Box** The junction box serves as the communal meeting spot for electrical wires, where they connect before moving on



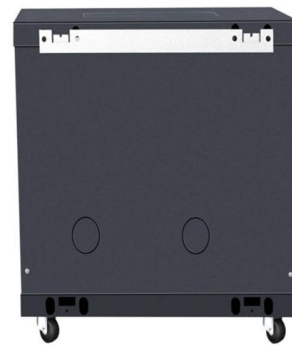
### What Are The Main Components Of Transmission Tower?

The side arms of the tower on both sides hold the transmission conductor is called the cross arm of the tower. The dimension of the cross arm depends on the



### Transmission System Components

Transmission structures are the most visible component of transmission lines. Transmission structures come in many different designs, but two common types are: Lattice Steel Towers (LST) consist of a



### What Is Junction Box And What Is Junction Box's Function?

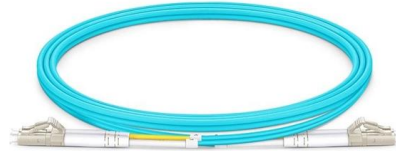
What Is a Junction Box? A junction box is typically a metal or plastic enclosure that contains electrical connections. These boxes come in various sizes, shapes, and materials, depending on the specific





## Role of transmission towers in power distribution

Transmission towers, also known as electric power towers or high voltage towers, are essential for distributing electrical energy from power plants to



### MORE CASES PRESENTATIONS



## Understanding Junction Boxes: Essential Components for Safe and

Junction boxes are made up of a number of crucial parts that cooperate to guarantee the effective and safe handling of electrical connections. It is essential to comprehend these elements in

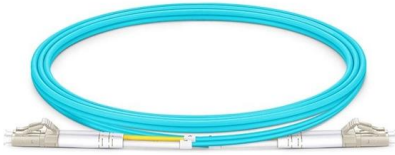
## Understanding Fiber Optic Junction Boxes: A Comprehensive

In the fast-paced world of telecommunications, data transmission has become a critical aspect of our daily lives. Fiber



## Distribution Box vs Control Box vs Junction Box: Key

Learn the differences between distribution boxes, control boxes, and junction boxes. Discover their functions, applications, and how E-abel provides



## Comprehensive Guide to Junction Boxes-Types, Uses, and

Junction box In a complex electrical system, the junction box, a seemingly inconspicuous but vital component, plays an important role in connecting, distributing and protecting wires and cables. It is



## Difference Between Distribution Boxes and Junction Boxes

Unlike distribution boxes, junction boxes do not contain circuit breakers or fuses. Instead, they act as connection points, protecting wire splices from physical



## Contact Us

---

For datasheets, pricing, or custom telecom energy solutions, please visit:  
<https://www.koskolong.co.za>