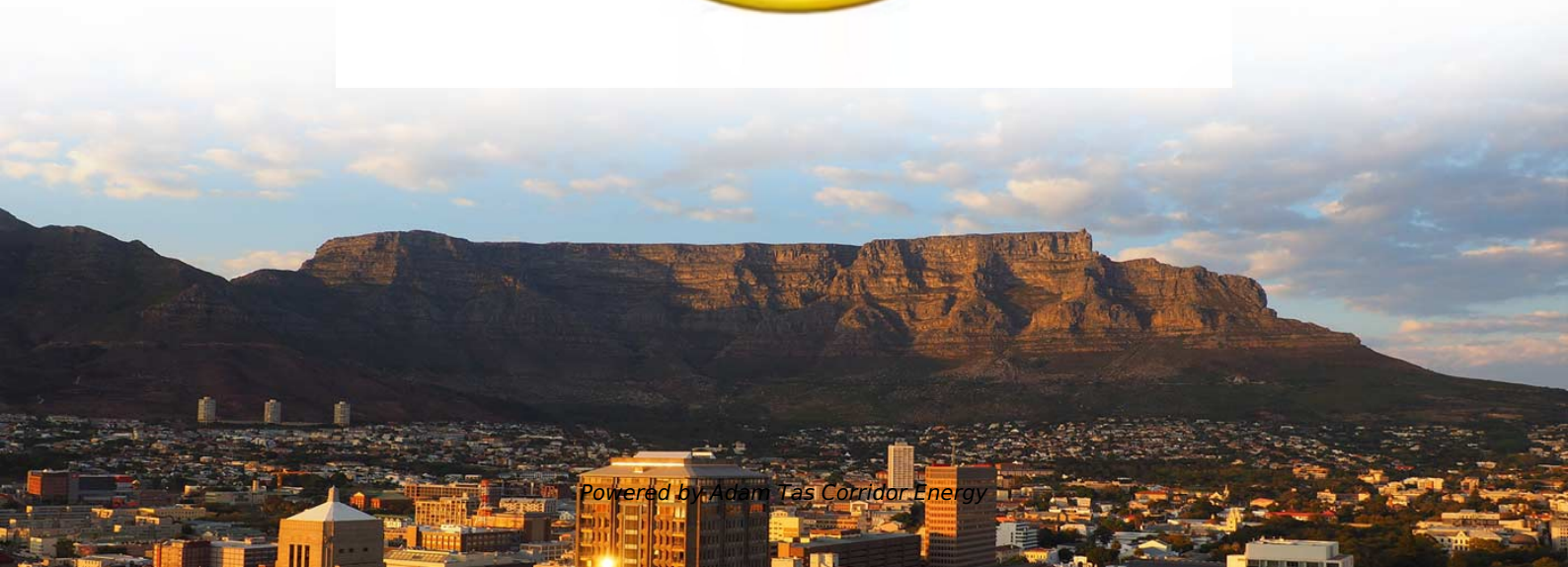




Adam Tas Corridor Energy

The lighting control console must be connected to an SFP optical module





The lighting control console must be connected to an SFP optical m

Product parameters



Small Form-Factor Pluggable (SFP) Module Installation Guide

These installation instructions provide overview and specification information for small form-factor pluggable (SFP) modules, as well as instructions for installing and removing SFP modules.

MikroTik SFP Transceiver Modules: Essential Guide to

Small form-factor pluggable transceiver modules from MikroTik are essential in improving network performance and connectivity. Network



View the Optical Module Status on a Switch

Step 3. Click Go. The Optical Module Status Table displays the following information: Port -- The port number on which the SFP is connected.

Troubleshooting Common SFP Module Issues

Therefore, it is important to be proficient in identifying and troubleshooting common fiber



transceiver sfp module faults, and to resolve them effectively. Physical

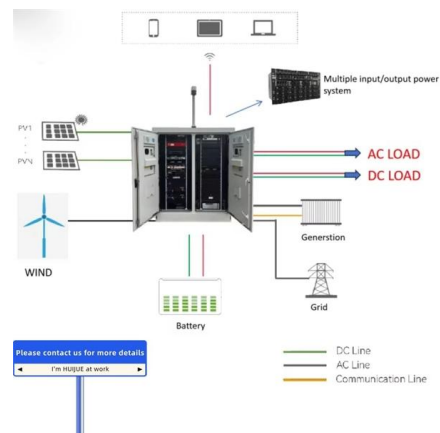


5 troubleshooting tips for connecting the SFP's

Here are 5 troubleshooting tips for connecting the SFP's. Have you ever tried to plug an optic SFP+ transceiver into an SFP+ port to discover that the connection didn't

Solved: SFP port troubleshooting

Hi All, I am hoping that someone may be able to shed some light on a strange issue we have. We have two new Catalyst 2960-48PST-S switches both of which have an 1000BaseSX SFP



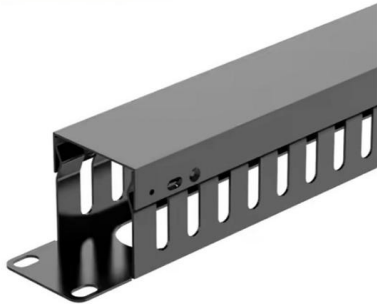
Pluggable Transceivers Installation Guide

To prevent ESD damage to an SFP module, always use an appropriately grounded ESD-preventive wrist strap when installing or removing the module. Handle the module by its sides only.



SFP LC Connector: Everything You Need to Know

The SFP LC connector is a necessary part of fiber optic communication, used in switches, routers, and transceivers among other

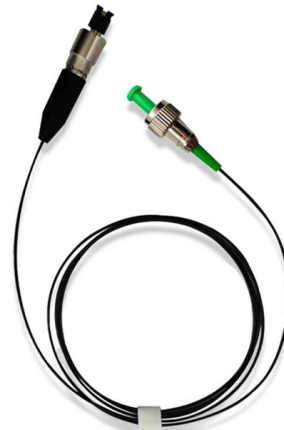


Common Questions About SFP Module and Media

When a 10G RJ45 SFP+ module is used at 1 Gbps, extra configuration for port data rate may be required. And when it is inserted into a 10 Gbps SFP+

Cant get connection on SFP using 9300

Any incompatibility like this should be shaken out during the qualification tests by the optic vendor for that specific host h/w and s/w version, but the brutal truth of the matter is that 3rd



How to view SFP optical power for Ethernet connections

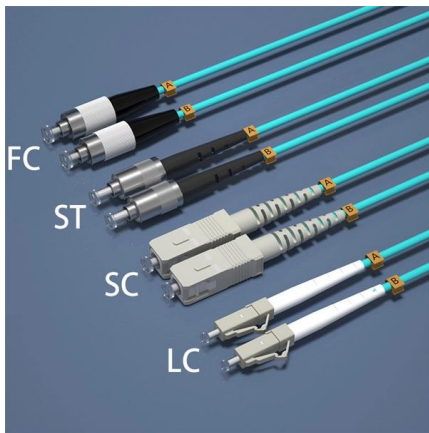
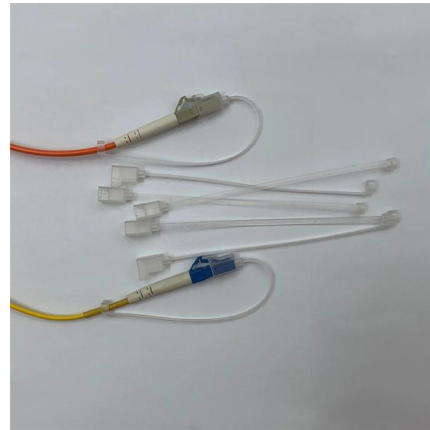
This document and the information contained herein may be used solely in connection with the NetApp products discussed in this document.





Troubleshooting and Repairing Optical Transceiver Failures in SFP

Have you ever experienced an unexpected network outage due to the failure of an SFP/SFP+ optical transceiver? Network outages can bring your ability to communicate and work to a



What is SFP Module and How to Choose it?

What is SFP module? Choose copper SFP or fiber SFP? Can we use SFP in SFP+ slots? All about Ethernet SFP modules are here.

Optical Module Working Principle , SFP Transceiver Technical Guide

This comprehensive guide breaks down the internal structure, core components (TOSA, ROSA, lasers), and operational mechanisms of SFP optical modules, enriched with technical insights and real-world



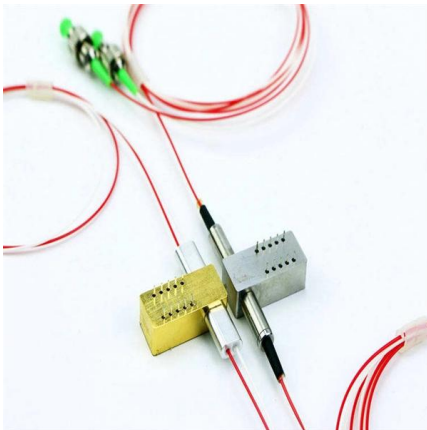
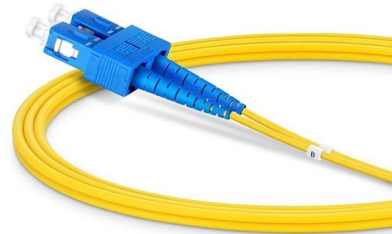
How to install and use the SFP+ Transceiver?

Care must be taken when handling SFP+ optical modules, especially to avoid damage to the eyes caused by laser or infrared light emitted by fiber optic



Standard Troubleshooting for SFP modules and Media

Q3: Are the TP-Link SFP modules compatible with third-party vendors' devices? A3: The TP-Link SFP (Small Form-factor Pluggable) GBIC transceiver modules



16 Tips to Troubleshoot Your Optical Transceiver Issues

There are several reasons for "no light" issues: incompatible SFP module, incorrect connection, SFP module not powered on, or bad SFP.

SFP Module: What's It and How to Choose It?

SFP module is a compact, hot-pluggable optical transceiver module widely used for telecommunication and data communications. It is also known as





How to Use SFP Connectors in Your PCB Layout

SFP connectors are used to route data into fiber optic transceiver modules, which are normally found in high-speed networking equipment. Today,

Everything You Need to Know about SFP Ports

SFP stands for Small Form-factor Pluggable, a hot-swappable transceiver module used in network switches, routers, and network interface



Troubleshoot Fiber Links on Catalyst 9000 Series Switches

Introduction This document describes how to troubleshoot fiber optic interfaces by addressing some of the fiber optic module and cabling specifications. Prerequisites Requirements

What is an SFP Module? An Ultimate Guide , SFP

What is an SFP Module? Small Form-factor Pluggable (SFP) module is a compact, hot-swappable transceiver used for both telecommunication and



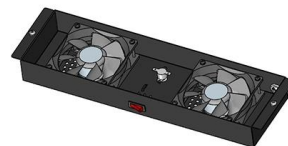
Cisco SFP and SFP+ Transceiver Module Installation

The SFP transceiver modules are hot-pluggable I/O devices that plug into module sockets. The transceiver connects the electrical circuitry of the



Pluggable Transceivers Installation Guide

Note The bidirectional SFP modules combine two SFP optical devices that must be used as a pair to establish the bidirectional connection over a single fiber. Module C and Module D in Optical SFP



How to Install or Remove SFP, SFP+, QSFP, and XFP

To connect an optical cable to an SFP module, use the appropriate patch cord (e.g., LC-LC, SC-LC, etc.). The patch cord must match the fibre type -



SFP Issue: Causes, Fixes, and Troubleshooting Guide

SFP issues are among the most common and frustrating problems in fiber optic and Ethernet networking environments. Whether you are dealing with a no link light, intermittent



How to Install an SFP Module: Step-by-Step Guide

Learn how to install an SFP module correctly with step-by-step instructions, safety tips, hot-swap rules, and troubleshooting for reliable network links.

Small Form-Factor Pluggable (SFP) Module Installation Guide

Introduction These installation instructions provide overview and specification information for small form-factor pluggable (SFP) modules, as well as instructions for installing and removing SFP modules.



SFP port inserted in the combo port is not detected when the li

When installing a fiber SFP module in a combo port, the network device won't display the module's details until a valid connection with another device is established.



Optical Module Working Principle , SFP Transceiver Technical Guide

Understanding the working principle of optical modules--especially SFP transceivers--is critical for network engineers, data center operators, and telecom professionals tasked with building and



Contact Us

For datasheets, pricing, or custom telecom energy solutions, please visit:
<https://www.koskolong.co.za>