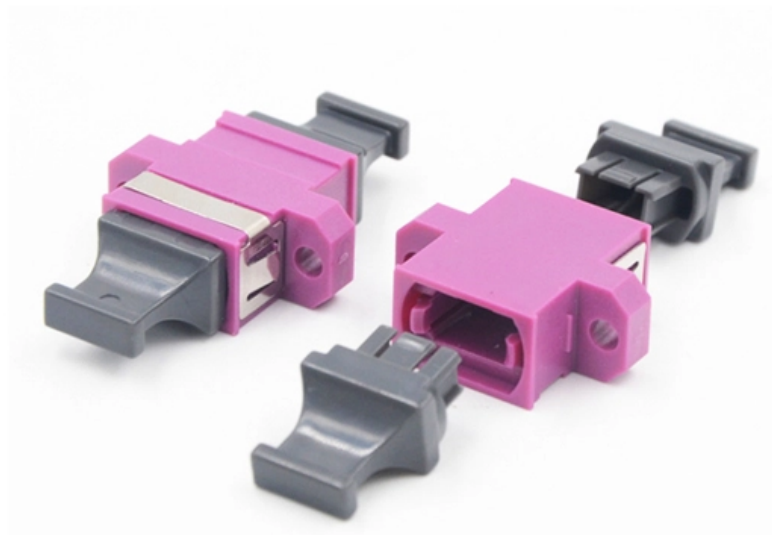




**Adam Tas Corridor Energy**

# **The optical port on the switch cannot be plugged in**





## Overview

---

Possible causes include: The connector attenuation of the optical fiber exceeds the attenuation threshold, or the optical fiber is bent seriously. If the optical module is installed on a GE port, run the display interface `GigabitEthernet x/x/x` command to check information about the port, including the rate and wavelength. Being able to monitor a non-working link is a pretty basic thing to do to be honest and having access to DDM/DOM/optical monitoring of down. Hello, from your output I can't see which type of QSFP you have installed, your QFX discovers. The Cisco Small Business Series Switches allow you to plug in a Small Form-factor Pluggable (SFP) transceiver in their optical modules to connect fiber optic cables. Download the file 'Compatible Transceivers' from the link below, or contact support to verify if the transceiver is supported or not.



## The optical port on the switch cannot be plugged in

---



### View the Optical Module Status on a Switch through the Command

Once the transceiver and fiber optic cable are plugged in properly in the switch optical module, you should be able to view the current information for the optical connection, which helps you manage

### Fiber ONT Troubleshooting , BroadbandSearch

Optical Network Terminal (ONT) troubleshooting guide: Tackling common glitches, step-by-step fixes, and preventive care for fiber-optic internet.



### What Can we do if no response when an optical module

According to the customer's feedback, how should we analyze and solve the issue that the switch and optical module are incompatible or cannot be

### Solved: SFP port troubleshooting

interface GigabitEthernet0/1 description Fibre link to Switch B switchport mode trunk In the lab during setup, I was able to to connect the two



switches together using the SFP port and ping



### All About QSFP Cables, Connectors, and More

The result is a small tolerance loop between the optical devices and lenses, which leads to very high yields. QSFP Optical Transceivers Optical



### Optical Module Solutions for Huawei S5700/S5720 Series Switches

Problem: All optical ports cannot be connected, and the indicator lights are not on. Solution: To solve this problem, you can follow these steps: Check if the fiber and optical modules



### Standard Troubleshooting for SFP modules and Media

In application scenario 2, connect the Ethernet port to the switch's port or other Ethernet devices with the Ethernet cable, and then connect the fiber port to the





## Optical ports not working , Switching

It may be that we are using old firmware (14.1X53-D27.3) on our QFX switch. Once this issue start happening, we have plugged and unplugged the transceivers at both ends, changed the ports and in

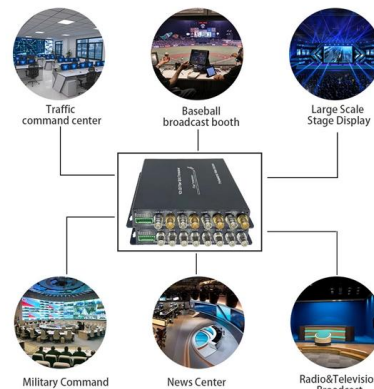


## How To Check If Interconnected Optical Ports Cannot

1. Checking the Optical Module Type Log in to the switch through Telnet or console port to check the switch model. Run the display device command to check the

## Troubleshooting Tip: SFP/SFP+ transceivers port/fiber link is not

Try installing it in another SFP port if available to see if the problem persists or goes away. If it goes away, it could be an issue with the port on the firewall.



## Fix: "An Ethernet cable is not properly plugged in or

The message "An Ethernet cable is not properly plugged in or might be broken" appears when Windows fails to detect a stable physical connection



## View the Optical Module Status on a Switch through the Command

Once the transceiver and fiber optic cable are plugged in properly in the switch optical module, you should be able to view the current information for the optical connection, which helps



## How to Troubleshoot A Fiber Optic Transceiver?

Take the 10G SFP+ optical modules as an example, when the switch's optical port connected with other network devices is not active, you can troubleshoot the port status and the

## Troubleshoot Switch Port and Interface Problems

This document describes how to determine why a port or interface experiences problems.





## Troubleshooting Optical Module Issues

If an FCS or CRC error occurs on a port, check whether the optical fiber is properly connected. You can replace the optical fiber with a new one to check whether the fault is caused by

## Troubleshooting the Optical Network Terminator (ONT)

Check that the other end of the broadband cable is correctly inserted into one of the ports on the Optical Network Terminator (ONT). This will usually be Port 1. If the



## Enabling pass through in a Huawei optic router

I have an optic cable that is plugged into the internet providers provided router, Huawei EchoLife HG8145V5. I also have my own TP-Link

## Why Can't I Plug In My Digital Optical Cable?

Advanced Solutions For Digital Optical Cable Problems Discover advanced solutions for digital optical cable problems, including troubleshooting tips and helpful



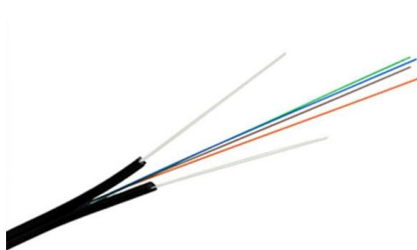
## 16 Tips to Troubleshoot Your Optical Transceiver Issues

The switch port may be faulty, or the optical transceiver may be overheated. If the optical transceiver is overheated, it will cause the switch port to



## MPO Cable: 2026 Procurement Guide & Market Analysis

Compare MPO cable architectures, Base-8 vs Base-16 standards, and optical performance criteria. A definitive 2026 guide for high-density fiber networking.



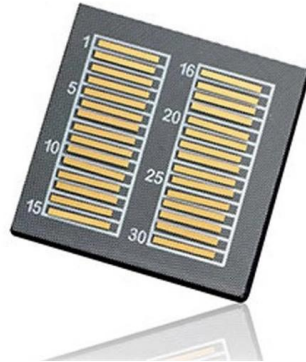
## How to Use the Optical Out (S/PDIF) Port on Your PC

Learn how to make use of the Optical Out (S/PDIF) port on your PC to set up an audio connection, and enjoy the best your audio system can offer.



## Next-Generation Connectivity: The Rise of 800G OSFP 2\*FR4 Optical

In a real-world industrial application, such as a large-scale AI training cluster, the 800G OSFP 2\*FR4 is deployed at the spine layer of the network. Imagine a high-performance computing



## Why is My Optical Audio Cable Not Working: Troubleshooting Tips

Checking The Physical Connections The physical connections of your optical audio cable play a crucial role in its functionality. Start by inspecting both ends of the cable for any visible

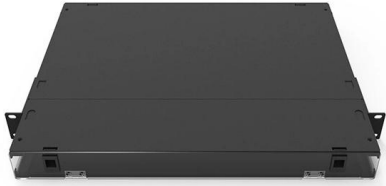
## Why Can't I Plug In My Digital Optical Cable?

Also, make sure to connect the Digital OUT or Optical OUT port of the TV to the Digital or Optical IN port of the soundbar. If securely plugged in, you will



## Optical Module Application: Common Problems & Troubleshooting

Based on typical issues encountered with optical modules in daily switch applications, this document summarizes basic troubleshooting steps for resolving common faults:



### What Is the Optical Audio Port, and When Should I Use It?

Ever wonder what that trapezoidal "optical" audio port is? You'll find these on the back of computers, HDTVs, media receivers, and more, but hardly



### Typical Troubleshooting Cases of Optical Module

Check whether the optical module is a Huawei-certified one. If not, replace it with a Huawei-certified optical module. If the optical module is installed on a GE port, run the display interface

### Fiber port of switch does NOT working

- I plugged new Fiber cable with new GBIC module, but switch port is NOT working (no blinking). - Show int status result: - I tried Port shutdown and no shutdown, but no different. - Try



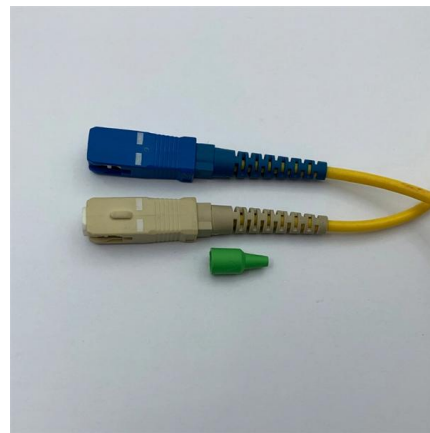


## Optical monitoring not possible on ports with link down?

On other vendor's switches I was always able to show DOM/DDM/optical-monitoring parameters for ports in down state which can help a lot to troubleshoot why the link is not working. In

## unsupervised\_topic\_modeling/topics /en/17/100/50/topics at

Contribute to  
annontopicmodel/unsupervised\_topic\_modeling  
development by creating an account on GitHub.



## Contact Us

---

For datasheets, pricing, or custom telecom energy solutions, please visit:  
<https://www.koskolong.co.za>