



Adam Tas Corridor Energy

The principle of signal transmission by a beam splitter is





Overview

A beam splitter or beamsplitter is an optical device that splits a beam of light into a transmitted and a reflected beam. It is a crucial part of many optical experimental and measurement systems, such as interferometers, also finding widespread application in fibre optic telecommunications. DesignsIn its most common form, a cube, a beam splitter is made from two triangular glass which are glued together at their base using polyester,, or urethane-based adhesives.



The principle of signal transmission by a beam splitter is

How Do Optical Beam Splitters Work & Applications

A polarizing beam splitter uses polarized light to determine its transmission and reflection outcomes. PBS devices are essential optical



What Is an Optical Splitter?

When an optical signal enters the splitter, it undergoes a process called power splitting. The splitting ratio determines the power distribution among



Fiber Optic Splitter

Therefore, the reallocation technique of optical signal can be achieved in multiple fibers, which is how fiber optic splitter comes into being. Specifically speaking, the passive optical splitter can split, or



What Is a Beam Splitter and How Does It Work?

The mechanism by which a beam splitter operates is based on the principles of partial



reflection and partial transmission. When light encounters the specialized surface, a portion is



Transmission and Reflection by Beamsplitters

In addition to the task of dividing light, beamsplitters can be employed to recombine two separate light beams or images into a single path. This interactive tutorial

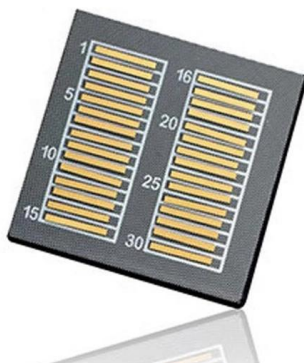
Beam Splitter Input-Output Relations

Beam Splitter Input-Output Relations The beam splitter has played numerous roles in many aspects of optics. For example, in quantum information the beam splitter plays essential roles in teleportation,



What is a Beam Splitter, and What are Its Functions and

Typically, a beam splitter is made of a transparent substrate, such as glass or fused silica, with a thin, precisely engineered coating on its surface. This





What are Beamsplitters?

Beamsplitters are optical components used to split incident light at a designated ratio into two separate beams. Additionally, beamsplitters can be used in reverse to



Understanding Fiber Optic Splitters: Principles,

Understanding Fiber Optic Splitters: Principles, Parameters, Types, Applications, and Future Trends 1. Introduction Fiber optic splitters are integral components in the

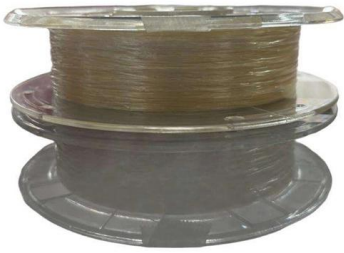
What is a Beam Splitter, and What are Its Functions and

A beam splitter is an optical device designed to split an incident light beam into two or more separate beams. It operates based on the principles of



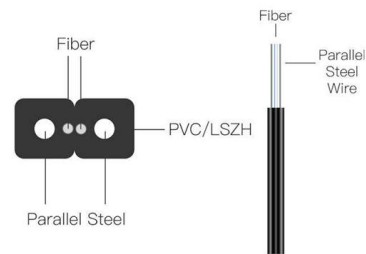
What are Beamsplitters?

They are designed to split unpolarized light at a specific Reflection/Transmission (R/T) ratio with unspecified polarization tendencies. Polarizing beamsplitters are



How Does a Beam Splitter Work in Optical Applications?

A beam splitter divides a light beam into two or more paths, crucial for optical devices like microscopes and interferometers.



Optical Splitters in Modern Networks

Unraveling the Power of Optical Splitters in Modern Networks In today's optical network topologies, the advent of fiber optic splitters contributes to

How does a beam splitter work? Common types and use cases

In fiber optic communication systems, beam splitters are used in multiplexing and demultiplexing signals. They enable the splitting of data signals for transmission over different





What is a Beam Splitter: Types And Applications

A beam splitter is a device used to separate or combine light. It is widely used in guiding light in optical systems, enhancing imaging and

Understanding Beamsplitters: Types, Principles, and

Beamsplitters can differ in size, shape, and material, but the working principle remains the same: the splitter transmits one part while reflecting the other.

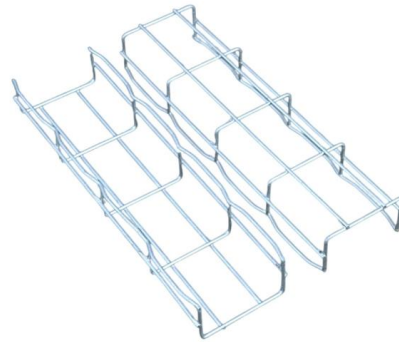


Your Go-to Guide to Optical Splitter

The optical splitter is an optical power distribution device that splits one optical signal into multiple optical fiber signals to achieve multichannel transmission.

Fiber-optic splitter

Fiber-optic splitter A fiber-optic splitter, also known as a beam splitter, is based on a quartz substrate of an integrated waveguide optical power distribution device, similar to a coaxial cable transmission



Beam Splitter

A beam splitter is defined as an optical device that effects a linear transformation of fields presented at two input ports, producing output beams that are related to the input fields in a characteristic manner



Hall effect sensor

Hall effect devices produce a very low signal level and thus require amplification. The vacuum tube amplifier technology available in the first half of the 20th century



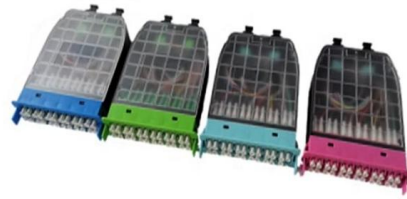
What is the Basic Principle of a Splitter?

The basic principle behind fiber optic splitting involves the division of the incoming light signal into several parts, each with a proportionate share of the



All You Need to Know About Beam Splitters

Beam splitter coatings are applied to optical surfaces to enhance light reflection, transmission, and polarization. These coatings minimize light loss



How Beam Splitters Work

Beam splitters are useful components for both classical optics and quantum networking. Their ability to manipulate light through reflection, transmission, and

Polarizing Beamsplitter

One of their main advantages is that they are insensitive to the degree of collimation of the beam and can be used in strongly convergent or divergent light. Depending on the density and type of



(a) Definition of beam-splitter electric field reflection and

Download scientific diagram , (a) Definition of beam-splitter electric field reflection and transmission coefficients. The beam splitter is illustrated as composed of a substrate (clear) with a



Contact Us

For datasheets, pricing, or custom telecom energy solutions, please visit:
<https://www.koskolong.co.za>