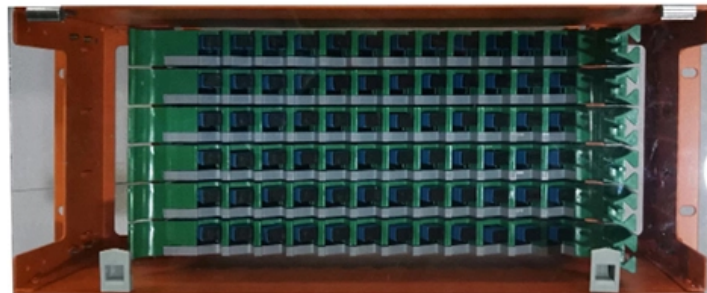




Adam Tas Corridor Energy

Thermal expansion and contraction of tubular busbars





Overview

When busbars heat up due to electrical current, they expand - a process called thermal expansion. Thermal stresses are generated between two bodies submitted to differential thermal expansion, such as a pair of busbars at different temperatures that are mechanically connected at multiple locations. The manuscript presents advanced coupled analysis: Maxwell 3D, Transient Thermal and Fluent CFD, at the time of a rated current occurring on the main busbars in the low-voltage switchgear. The environment where a vehicle is used can be harsh and varying in temperatures a lot.



Thermal expansion and contraction of tubular busbars

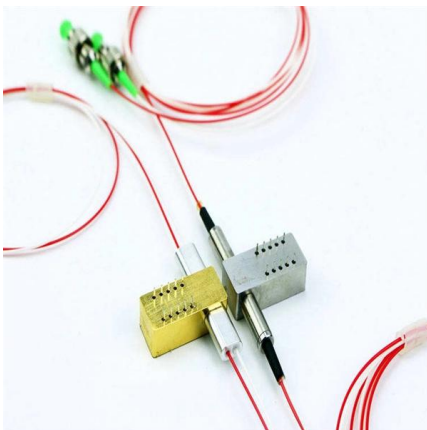


Aluminum Bus Bars for EV Fast Chargers: Thermal Expansion Joint

An in-depth exploration of aluminum bus bars in EV fast chargers with a focus on thermal expansion joint design best practices. The article covers fundamentals, design challenges, real-world

Enhancing thermal diffusion in busbars through heat pipe coupling: A

Numerical and analytical methods are crucial steps in ensuring the thermal analysis of busbars, utilized to predict system temperature rise , , , , . Therefore, through



Design and analysis aspect of metal expansion bellows: A review

An expansion joint contains a flexible connections like bellows used to compensate the dimensional changes caused by thermal expansion and contraction in the pipeline systems, ducts, or

ALUMINIUM PIPE BUS

The rigid tubular conductors shall be of aluminium of standard type and designed to operate within set temperature limits and to



withstand thermal and electro mechanical forces developed due to short



A Thermal-Mechanical Approach for the Design of Busbars Details

Note that the TE analysis output not only provides the driving force for thermal expansion but also allows the evaluation of temperature-dependent aluminum mechanical and physical properties show in .

Power Applications Using High-force Press-Fit

The full integration of busbars within power applications by using pluggable, high-force, press-fit technology can significantly improve power efficiency, reduce the bill-of-material costs, decrease



A Thermal-Mechanical Approach for the Design of Busbars Details

An approach for the thermal-mechanical design of busbars was developed using ANSYSTM-based numerical simulation. Special attention is given to specific design features such as weld plates,



A Thermal-Mechanical Approach for the Design of Busbars Details

An approach for the thermal-mechanical design of busbars was developed using ANSYS(TM)-based numerical simulation. Special attention is given to specific design features such as weld plates

190X95X25mm

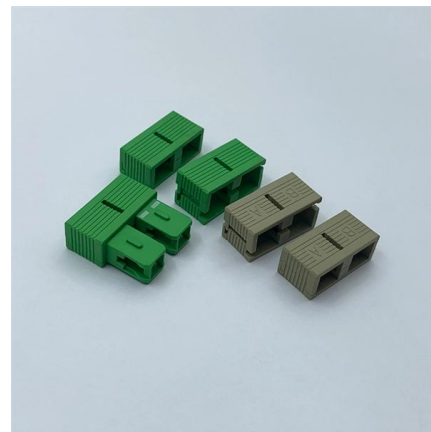


Evaluation of thermal expansion in busbars used for battery

Abstract Thermal expansion can be an issue in solid busbars, the expansion is caused by several factors and can cause plastic deformation in connection points or structure around it. The expansion

Evaluation of thermal expansion in busbars used for battery electric

In this thesis, the problem of thermal expansion in busbars for implementation in automotive applications are investigated. A busbar is a metal rod that is used to carry high amounts of current and can in



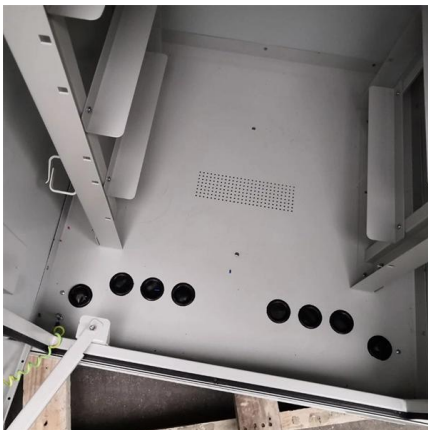
A Thermal-Mechanical Approach for the Design of Busbars Details

A test case based on a demonstration busbar system is presented and the impact of geometry and temperature on the thermal-mechanical performance of those specific features is discussed.



Enhancing thermal diffusion in busbars through heat pipe coupling: A

By integrating heat pipes into the busbar structure, significant improvements in heat transfer capability can be achieved, thereby enhancing the thermal performance of the busbar and



A Finite Element Analysis of Substation Aluminum Busbars

- oSimulating the busbars being mounted on slots that allow the busbars to move in the axial direction, along their length.
- oReduces the risk of injury during maintenance when the tension or compression

How Thermal Expansion Affects Busbars - Electrical

When busbars heat up due to electrical current, they expand - a process called thermal expansion. This can weaken connections, increase





A finite element analysis of Substation Aluminum Busbars

Objectives The objective of this study was to analyze the fatigue life of four common aluminum busbar conductors undergoing cyclic thermal expansion/contraction resulting from changing ambient

Thermal analysis and optimization of temperature rise in busbar joints

The busbar systems are introduced, typically in industries for large scale power distribution. As a high power distribution with large current raises heat loss and temperature rise problems at busbar joints.



A Thermal-Mechanical Approach for the Design of Busbars Details

To assist smelters to evaluate the performances of busbars systems under realistic operating conditions, a methodology was developed using ANSYS(TM)-based numerical simulation,



Coupled electric-magnetic-thermal-mechanical

The mechanical displacement of the busbar conductors due to both magnetic force and thermal expansion generated by the short-circuit current is



Electrical Busbars: Function, Types, Design & Selection

Electrical busbars are solid conductors used to carry and distribute high current in switchgear, panels, substations, and power systems. This guide

Battery Module Fastener Failure Under Thermal Expansion - M8

Quick Answer Why do fasteners fail under thermal expansion in battery systems? Fasteners fail due to repeated expansion and contraction of materials, causing preload loss and joint loosening over time.



Conductor temperature monitoring for the fully insulated busbar

The thermal parameters of the joint are provided in Table 2 . Considering the symmetry of the fully insulated busbar pre-fabricated joint, a quarter 3-D simulation model is established in Figure 5



Thermal Analysis of Heat Distribution in Busbars during Rated

The purpose of this work is to analyze the temperature distribution in busbars during rated current flow. A simulation model of physical-thermal phenomena occurring during the flow of



Thermal Expansion in Busbars for Electric Vehicles

To be able to answer this research question fully, a larger evaluation of different surface treatments would be needed. The main issue is the surface emissivity

Contact Us

For datasheets, pricing, or custom telecom energy solutions, please visit:
<https://www.koskolong.co.za>