



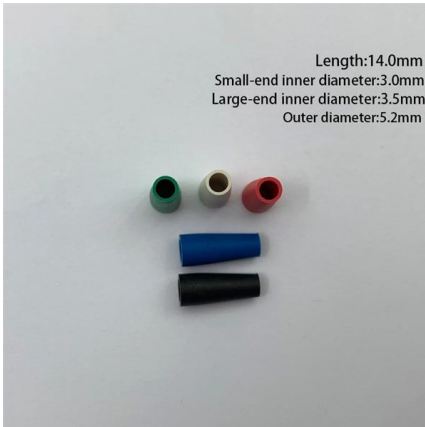
Adam Tas Corridor Energy

Trunk Optical Cable Fault Notification





Trunk Optical Cable Fault Notification



OptoTrunk Cables

OptoTrunk Cables optimize space, simplify system architecture, improve performance and support expansion in data center applications. They enable

Troubleshooting Physical Layer Alarms on SONET and SDH Links

An OTN (Optical Transport Network) alarm is a notification mechanism that indicates the occurrence of an error, defect, or anomaly in the optical network infrastructure.



Trunk cables & preassembled installation cables

Trunk cables are one of the essential elements in any fiber optic communication network, since they serve as a physical conduit, pipeline or circuit for an optical fiber connection. To guarantee security,

Fiber Optic Trunk Cables

Our fiber optic trunk cables provide high density connections to patch panels, cassettes or cable harnesses. Order a single or multi mode cord



How to Troubleshoot Problems with Fiber Trunks: A Comprehensive

In this article, we will explore common problems that can arise with fiber trunks and provide step-by-step troubleshooting solutions. Whether you are a network technician or an enthusiast looking to



[M-series] SONET/SDH alarms and troubleshooting tips

Ensure that the remote end of the fiber optic cable is connected, undamaged, and the remote port is properly configured. Try a soft loopback with the loopback internal command.



SIP-Trunk IP-based failure alert , 3CX Forums

The system can not know if a sip trunk on ip based is up or not, so when you try to send a call if this sip trunk times out then you can use the failover trunk in your outbound rule and receive an





The Role of Fiber Trunk Cables in Modern Network Infrastructure

In today's high-speed data transmission world, fiber trunk cables are essential components that form the backbone of advanced optical networks. These cables are designed to



Fiber Optic cable Series-

The table below presents the primary faults of fiber optic cables. By employing an enumerative method based on the collected fault information, the fault can be comprehensively determined.

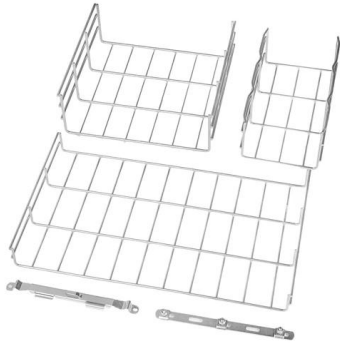
What is a Fiber Trunk Cable?

A Fiber Trunk Cable, also commonly referred to as a trunk cable or a main cable in optical fiber communication systems, is a high-capacity, high-performance cable designed to carry



What is the Method for Troubleshooting a ControlNet

During a visual inspection of the network, it was noted that some trunk cable center pins are lower than the inner ring of their connectors. This



Fiber optic trunk cables , Rosenberger OSI

Rosenberger OSI introduced high-fiber-count factory assembled fiber optic trunk cables based on loose tube indoor, universal and outdoor cables to the market in 1991.



FS Community

Hier sollte eine Beschreibung angezeigt werden, diese Seite lässt dies jedoch nicht zu.



What Is Fiber Optic Trunk Cable Assemblies

Overview: Fiber Optic Trunk Cable Assemblies are high-density, pre-terminated cable systems that integrate multiple fiber strands within a single,



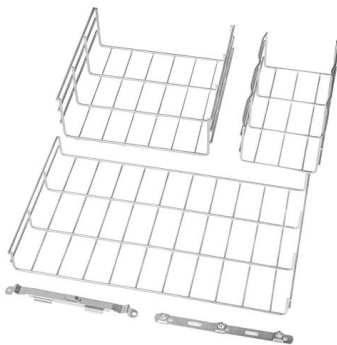


How to Identify & Prevent Optical Fiber Cable Damage

Learn how to detect and repair damaged fiber optic cables. Visual checks, OTDR testing, IEC compliance, and waterproof maintenance tips for

Fault summary of fiber optic transceivers

Fiber optic transceivers are essential components in modern network infrastructures, facilitating the conversion and transmission of data between



Alarm and TCA Monitoring and Management

Alarm and TCA Monitoring and Management 9
Alarm and TCA Monitoring and Management This chapter describes Cisco Transport Controller (CTC) alarm and threshold crossing alert (TCA)

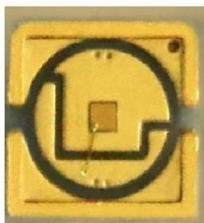
MTP Trunk Cables vs MTP Breakout Cables:How to Select

In high-density network environments such as data centers, MTP trunk cables and MTP breakout cables are two essential types of fiber optic



MPO Trunk Cable vs. Traditional Fiber Optic Cables

What Are MPO Trunk Cables? An MPO trunk cable (Multi-Fiber Push-On) is a pre-terminated fiber optic cable designed for high-density, scalable connectivity.



MTP Trunk Cable Deployment in Large-Scale Data Centers

MTP trunk cables play a critical role in high-speed data centers, enterprise networks, and telecommunication infrastructures by providing a dense, efficient, and



OEM/ODM
CUSTOMIZATION AVAILABLE



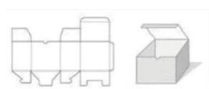
Full product customization



Structure customization



Brand customization



Packaging design

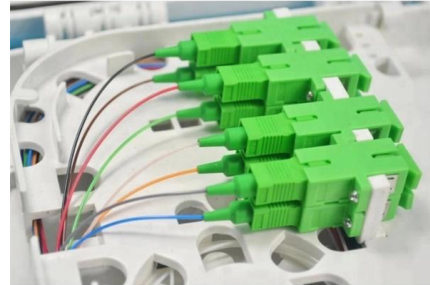
Fiber Optic Troubleshooting: Expert Guide for Common

Fiber optic troubleshooting is an essential skill for network administrators, technicians, and engineers responsible for maintaining and



Maximizing Network Efficiency with Fiber Trunk Cables: Features

Additionally, fiber trunk cables enable efficient cross-connects between different racks and rows, facilitating organized and scalable network expansions. In telecommunications, fiber trunk



MPO MTP Fiber Optic Trunk Cable , T& S Communication

T& S Communication's high-density MPO/MTP trunk cables deliver reliable, high-speed fiber optic connectivity for data centers and enterprise networks. Available

Troubleshooting Fiber

Very simple to use, this single-ended optical fault finder uses technology similar to an OTDR, sending a laser light pulse through the fiber and measuring the power and



MTP MPO Trunk cables

On-site termination of an MPO/MTP® connector with 12, 24 or even up to 72 fibers is obviously no longer possible. In other words, if you use MPO connectors you also have to use trunk cables



FTTH common fault solutions

FTTH common fault solutions, what are the common faults of FTTH? What about the common faults of FTTH? Analysis of the causes of faults, faults in the operation of FTTH technology

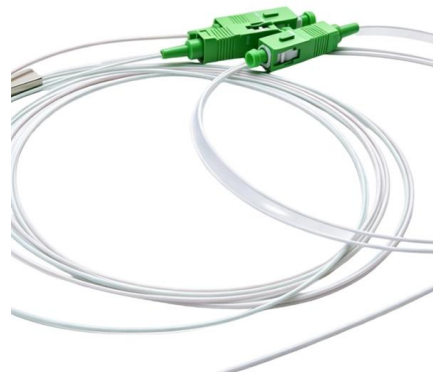


Ortronics Fiber Trunk Cable System , Legrand

A fiber trunk cable system, fully configurable to exactly suit your design. Legrand pre-terminated fiber trunk cable assemblies offer a streamlined approach to network

Fault Management > Troubleshooting Guide > Trunk Faults >

When a PCM terminal detects multiframe loss or TS16 alarm indication signal (AIS) alarm, the PCM terminal sends an RMFA signal to the peer device, indicating a reception fault. A device sends all 1



Contact Us

For datasheets, pricing, or custom telecom energy solutions, please visit:
<https://www.koskolong.co.za>