



**Adam Tas Corridor Energy**

# **Tunnel Motor Distribution Box Connection Method and Price**





## Tunnel Motor Distribution Box Connection Method and Price

---



### brochure\_tunnel\_and\_infrastructure\_en

Klaus Faber AG provides you with cables and connectivity solutions for construction site power distribution, temporary cabling for large equipment and tunnel cables for the infrastructure.

## TUNNEL AND RAIL SYSTEM SOLUTIONS

It is a modular tunnel support system that allows the installation of all equipment, such as electrical, mechanical, walkways, and handrails, on a single support. It can be produced in hot-dip galvanized,



### Low voltage motors Installation, operation, maintenance and

There is a separate manual for e.g. Ex motors 'Low voltage motors for explosive atmospheres: Installation, operation and maintenance and safety manual (3GZF500730-47) Additional information

## Motor terminal box connection methods and procedures

Jim Bryan (retired) EASA Technical Support Specialist As with most tasks, there are many



ways to terminate motor leads and each one has a following who believe it



## Cable Junction Boxes: 8 Types, Tech Specs & Installation

Pinpointing Differences: 8 Main Types of Junction Boxes To accurately select the right junction box, you must understand the

## Catalogo Tunnel 2016\_LDrev1LOW3.pdf

Box in aluminium alloy EN 1706 AC-4610DF for single core cables, suitable for ordinary and reinforcing lighting. The terminal block is made with composable terminals in technopolymer suitable or the



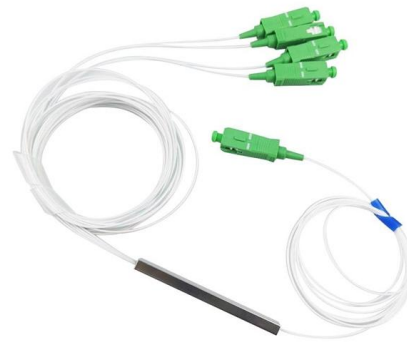
## Distribution Assemblies for Tunnelling

Blakley designs and manufactures bespoke tunnel distribution assemblies, which combine a cable link box (to enable the electrical system to be easily extended) with high current sockets to power heavy



## Energy distribution boxes, tunnel lighting

WE-POWER developed the TDLB to withstand harsh conditions in accordance with BS6164, which provides useful guidance on voltages, equipment enclosures, cabling, electrical protection and



## MCB Box Full Wiring Connection Explained , Inverter to Main Line , A

In this video, we're diving deep into the complete wiring connection of an MCB box -- from A to Z. Whether you're an electrician, a student, or a DIY enthusiast, this step-by-step guide will

## Motor terminal box connection methods, procedures

As with most tasks, there are many ways to terminate motor leads and each one has a following who believe it is the best method. Here we will discuss some of these procedures and outline a few of the



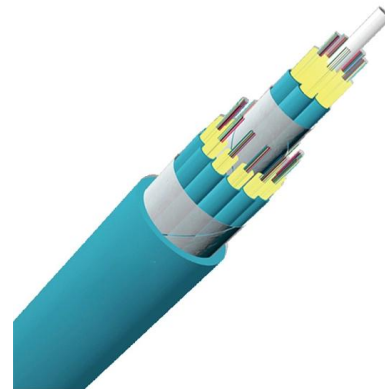


### 6(& 7,21 9,, 7(& +1,& \$/ 63(& ,),& \$7,216

7HQQGHUHU¶V 6WDPS,QLWLDOV 3DJH RI 7(& +1,& \$/63(& ,),& \$7,21 ±(/(& 75,& \$/:25.6 & 217(176 \$ 6& 23( 2) :25. % 67\$1'\$5'6 & \*(1(5\$/ ' (7\$/,( ' 7(& +1,& \$/ 63(& ,),& \$7,21 +7 3\$1

### Distribution Assemblies for Tunnelling , Blakley Electrics

Blakley designs and manufactures bespoke tunnel distribution assemblies, which combine a cable link box (to enable the electrical system to be easily extended)



### Energieversorgung und -verteilung im Tunnel , Phoenix Contact

Power supply and distribution in a tunnel Tunnels are home to a variety of applications that need to be supplied with power in a high-availability configuration. Particularly critical subsections, such as



### Motor Distribution Junction Box

The DB power distribution junction box serves as a point of power distribution for 1-4 motors when used in conjunction with motor branch circuit protection. Order today!



### Distribution Assemblies for Tunnelling

Blakley designs and manufactures bespoke tunnel distribution assemblies, which combine a cable link box (to enable the electrical system to be easily extended) with high current sockets to power heavy



### unsupervised\_topic\_modeling/topics /en/15/100/50/topics at master

Contribute to [annontopicmodel/unsupervised\\_topic\\_modeling](#) development by creating an account on GitHub.



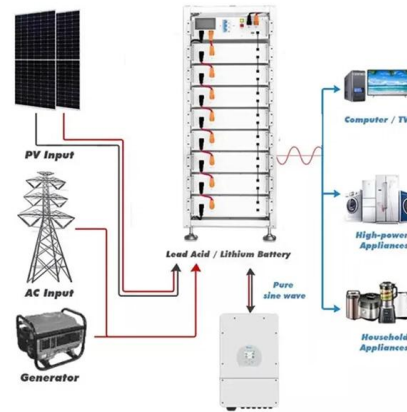
### Energy distribution boxes, tunnel lighting

The Tunnel Distribution & Lighting Box provides tunnel contractors with a complete solution for temporary electrical installation that complies with competent local authorities. WE-POWER



## Motor terminal box connection methods and procedures

This 40-page booklet provides great advice for obtaining the longest, most efficient and cost-effective operation from general and definite purpose electric motors.



## Receptacle combination and power distributors for tunnels

Tunnel receptacle combination are key components of every tunnel system. They need to meet extremely strict requirements in terms of stability and strength. Our

## Energieversorgung und -verteilung im Tunnel , Phoenix

Power supply and distribution in a tunnel Tunnels are home to a variety of applications that need to be supplied with power in a high-availability



## Energieversorgung und -verteilung im Tunnel , Phoenix Contact

Starting from the main distribution, the TAP box supplies power to your individual tunnel applications, such as the lighting and evacuation systems. This protects the main distribution from short circuits.





## MEP Design Guidelines for Tunnels

The document provides design guidelines for mechanical, electrical, and plumbing systems in tunnels. It outlines requirements for electrical systems including low

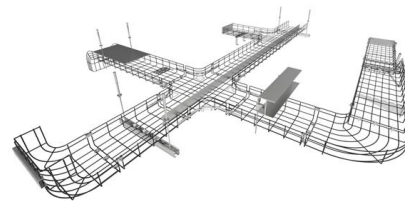


## SP-JXF 3 Phase Motor Circuit Control Low Voltage

PRODUCT OVERVIEW SP-JXF low-voltage distribution box is applicable to three-phase three-wire, three-phase four-wire and three-phase five-wire systems of

## Motor terminal box connection methods and procedures

Jim Bryan (retired) EASA Technical Support Specialist As with most tasks, there are many ways to terminate motor leads and each one has a following who believe it is the best method. Here we will



## Contact Us

---

For datasheets, pricing, or custom telecom energy solutions, please visit:  
<https://www.koskolong.co.za>