



Adam Tas Corridor Energy

Türkiye QSFP28 optical module PAM4





Türkiye QSFP28 optical module PAM4



QSFP28-50G-ER Optical Transceiver Module

TARLUZ 50GBase-ER QSFP28 transceiver module is designed for 50 Gigabit Ethernet, it transmits over single mode fiber up to 40km. This 50G QSFP28

CWDM-100G-Q28-SL40-27

Our EDGEOPTIC CWDM-100G-Q28-SL40 is a multi-vendor compatible 100G CWDM Single Lambda QSFP28 optical module designed for next-generation 100



High-speed Interconnection--100G QSFP28 LR1 10KM Optical Module

In the process of data center evolution to 400G/800G, Single Lambda 100G Transmission has become a key breakthrough point to reduce the complexity of optical networks. ETU-LINK 100G

Design and Implementation Scheme of QSFP28 Optical

The PAM4 optical transmission signal of the QSFP28 optical transceiver used to measure and



optimize another PAM4 optical transmission



What is QSFPTEK 100G QSFP28 PAM4 DWDM

QSFPTEK QSFP28 PAM4 DWDM Transceiver. The manufacture of the 100G PAM4 transceiver is based on a highly integrated silicon photonic chip. The transmitting

50G QSFP28 PAM4 ER 1310nm 40km Transceiver

50G QSFP28 ER module provides high-performance and cost-effective data transmission up to 40km using single-mode fiber via a Duplex LC connector -



Design and Implementation Scheme of QSFP28 Optical Transceiver

We designed and implemented the QSFP28 optical transceiver using PAM4. This study makes the following contributions: (1) 50 Gbps high-capacity long-distance transmission, only PIN



QSFP28 PAM4 DWDM: How to Extend 100G/400G Links Without

Learn how QSFP28 PAM4 DWDM technology can extend 100G/400G network links without performance loss. Discover practical strategies, deployment tips, and key considerations for



Design and Implementation Scheme of QSFP28 Optical

A quad, small form-factor pluggable 28 Gbps optical transceiver design scheme is proposed. It is capable of transmitting 50 Gbps of data up to a

FIBERSTAMP 100G QSFP28 SR1 Optical Transceiver

The FIBERSTAMP 100G QSFP28 SR1 is a single-Channel, Pluggable, Fiber-Optic QSFP28 for 106.25Gbps PAM4 Ethernet Applications. It is a high performance



Understanding the OSFP Standard: The Open 400G/800G Optical

What Is the OSFP Standard? OSFP (Octal Small Form Factor Pluggable) is a pluggable optical transceiver interface standard that supports eight electrical lanes (Tx/Rx) per module. Each



Optical Transceiver Module

Fiber optic module manufacturer, ETU-Link supply full model optical transceivers, including standard 8g/10g/25g/40g/100g sfp+ optical modules and



QSFP28 hardware design block diagram.

Download scientific diagram , QSFP28 hardware design block diagram. from publication: Design and Implementation Scheme of QSFP28 Optical Transceiver for Long-Reach Transmission Using PAM4

A Closer Look at 100G QSFP28 Single Lambda

100G QSFP28 Single Lambda optical module uses single-wavelength PAM4 technology for data center interconnects. Discover its benefits, standards,



NSComm100G Optical Transceiver Modules: A Practical Guide

This guide breaks down QSFP28 modules - SR4, LR4, and DR, with advice on reach, fiber types, connectors, power, DOM, interoperability, and lifecycle management.



100GBASE-SR1.2 QSFP28 PAM4 100m OM4 DDM Duplex LC MMF Optical

The FS Compatible 100GBASE-SR1.2 QSFP28 transceiver is a pluggable optical transceiver with a duplex LC connector interface for short-reach data communication and interconnect applications



100G PAM4 DWDM QSFP28 80km Transceiver Module

100G PAM4 DWDM QSFP28 80km Transceiver Module Flyin 100G DWDM PAM4 transceiver supports to multiple 100G links up to 80km using TDCM and EDFA

100G-FR Single Lambda QSFP28 2km , PAM4

EDGEOPTIC 100G-FR Single Lambda PAM4 QSFP28: 2km over SMF with FEC, 1310nm band, 4dB budget, 106.25 Gbps. LC duplex for efficient data center



QSFP28 PAM4 DWDM: High-Capacity 100G/400G

Explore QSFP28 PAM4 DWDM transceivers for high-speed 100G/400G networks. Learn how PAM4 modulation and DWDM enable long



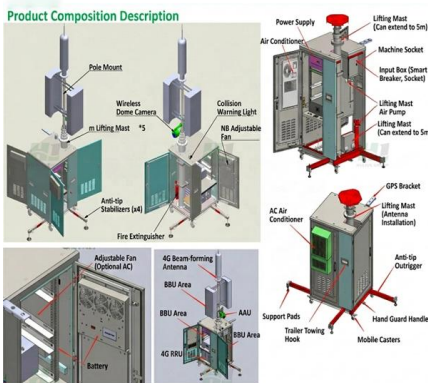
Custom 50G QSFP28 Optic Transceiver , Long-Haul Reach , WolonFiber

This module allows network engineers to establish a stable 53.125Gbps PAM4 link using existing QSFP28 slots. Manufactured in WolonFiber's Wuhan facility, each unit is 100% 3D interferometer



CWDM-100G-Q28-SL40-27

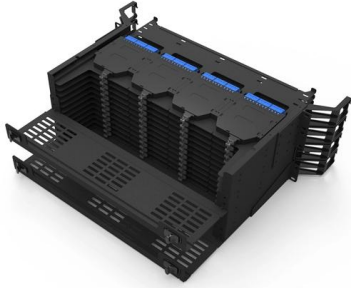
100G CWDM Single Lambda PAM4 QSFP28 module Channel 27 at 1270nm. 30km over SMF with FEC. 106.25 Gbps, 15.8dB link budget. LC duplex connector.



Complete Guide to QSFP-DD, QSFP28, QSFP56,

Complete Guide to QSFP-DD, QSFP28, QSFP56, SFP56, and SFP28 Optical Modules As high-speed networks continue to evolve, optical transceivers like





QSFP28 optical transceivers , Smartoptics

On the other hand, PAM4 QSFP28 optics offer a low-power, cost-effective solution optimized for shorter-range switch interoperability in data center environments.

Contact Us

For datasheets, pricing, or custom telecom energy solutions, please visit:
<https://www.koskolong.co.za>