



**Adam Tas Corridor Energy**

# **Unit Distribution Box Zero Row Model**





## Overview

---

• Eliminates the use of valuable revenue-generating RU space within network equipment cabinets • Mounts on the rear of almost any cabinet allowing for ease of access to secondary load connections • Connectorized secondary outputs permit ease of installation to network equipment • 125A. Our mission is to meet customer's expectations by providing satisfaction through cost, quality, service, delivery and continuous improvement. EcoStruxure Row Data Centre (formerly InfraStruxure) encompasses our integrated and scalable row solutions designed to modernise your physical infrastructure. These solutions provide a flexible and efficient way to manage critical resources for optimal performance and reliability in your data. Designed to protect both on-premises and remote environments, our PDUs not only optimize power consumption but also guarantee maximum uptime with pinpoint accuracy.



## Unit Distribution Box Zero Row Model

---



### Room Air Conditioners

Close-Coupled Cooling for small to large data centers The InRow cooling product design closely couples the cooling with the IT heat load. An unpredictable data center environment is common among IT

### Zero-Inflated Distributions in R: Handle Excess Zeros in Count Data

Home > Zero-Inflated Distributions in R: Handle Excess Zeros in Count Data Zero-Inflated Distributions in R: Handle Excess Zeros in Count Data Zero-inflated distributions model count data



### ImageJ

Support is available on the mailing list, on the image.sc forum and on reddit. Disclaimer

### The Zero Inflated Poisson Regression Model

Such data are hard to deal with using traditional models for counts data such as the Poisson, the Binomial or the Negative Binomial regression models. This is



### **Zero RU 48Vdc Power Distribution Unit**

Alpha's Z-PDU series of Zero RU 48Vdc Power Distribution Unit solves this problem by delivering DC power distribution without occupying valuable rack space in the IT cabinet.



### **HP Modular Power Distribution Units (Zero-U/1U Modular PDUs)**

Features List Single input power distribution units with a unique modular design architecture Zero-U/1U dense rack form factor Easily accessible outlet receptacles and improved cable management Models



### **1 Pcs bridge type neutral line bar 5 holes 7 holes 10**

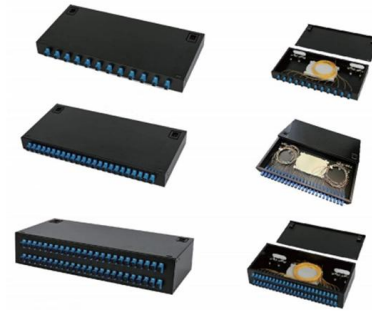
1 Pcs bridge type neutral line bar 5 holes 7 holes 10 holes neutral ground bar grounding copper bar 6\*9mm distribution box connected to zero terminal block (





## Decentralized Building Automation Distribution Boxes

Our MSR distribution boxes are individually tailored to your project. After determining the spatial axes and functions, we manufacture the system distribution box with

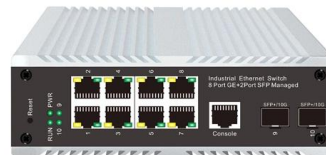


## In-Row Coolant Distribution Unit- INVT Network Power (Shenzhen)

In-Row Coolant Distribution Unit (CDU) The INVT SC Series In-Row CDU is engineered to deliver efficient liquid cooling for high-density data center environments. Designed around a modular cabinet

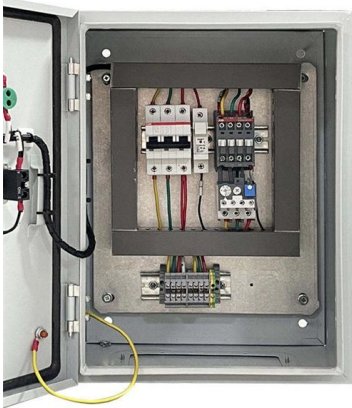
## Row Units , ExactEmerge(TM) Row Unit , John Deere US

Go deep into the heart of this new revolutionary technology and learn what makes ExactEmerge(TM) different from any previous or current row unit.



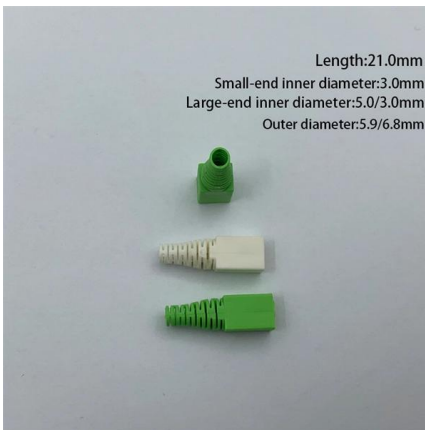
## Evaluating coolant distribution unit (CDU) architectures:

In-row CDU In-row CDUs centralize cooling between racks, balancing rack-level control with shared infrastructure. They reduce the number of CDUs



## Zero Ground Row Terminal Copper Distribution Box

Zero ground row 5 holes 10 2\*15 pure copper - Bowery Pure Copper, Distribution Box, Copper Bar, Ground Wire, Terminal Block Terminal Block Q: What material is the Zero Ground Row Terminal



## Power Distribution Units (PDUs)

Power Distribution Units (PDUs) Expand the monitoring capacity of your network with our expansion port cable. For use with various iPDU and UPS models, this cable

## Technical Article

The modular data center indicated here is built with a number of racks, UPSs, power distribution cabinets, power distribution units, air conditioners (in-row cooling) and



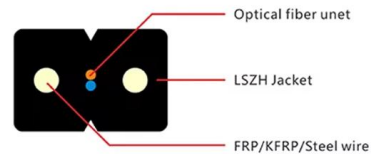


## Power Distribution Units

Connect up to 32 iPDUs with dual 1GB network ports, daisy-chaining on a single IP and network switch port. Adapt effortlessly to changing power demands with the

## Practical Guide to Zero-Inflated Models for Overdispersed Data

Delve into practical methods to handle overdispersed data. Zero-Inflated Models simplify modeling excess zeros and improve analysis accuracy for complex datasets.

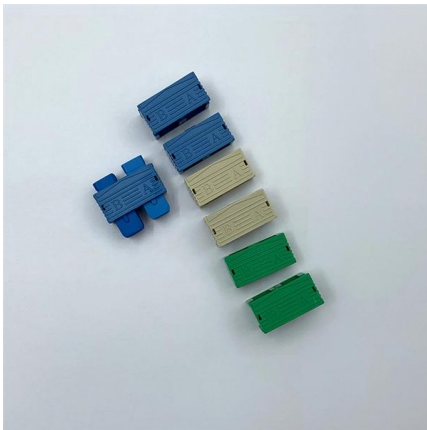
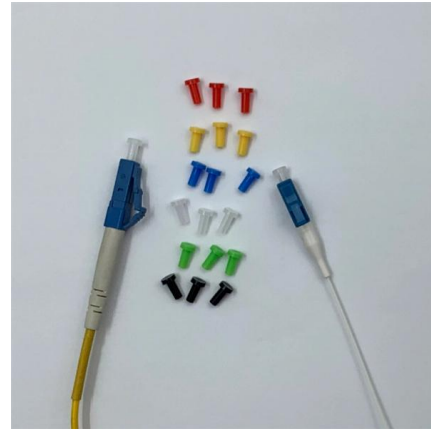


## Distribution Boards & Consumer Units

Easy to install Box with four studs and adjustable nuts for easy fit / easy remove of pan assembly.

## Coolant distribution unit (CDU) , Eaton

Enterprise coolant distribution units ROL4000-48U65 Inspired by the Open Compute Project (OCP) Project Deschutes fifth generation specifications, the Eaton Boyd Thermal ROL4000 unit combines



### Distribution Board

The ROW DB's can be utilized by Panel builders to incorporate in their Distribution boards or other Panel systems suitable for mounting various types of DIN Rail LV Switchgear components.

### Google Drive: Sign-in

Hier sollte eine Beschreibung angezeigt werden, diese Seite lässt dies jedoch nicht zu.



### A New Unit Distribution: Properties, Inference, and

We propose a new bounded distribution called the Marshall-Olkin reduced Kies distribution, which is a competitive model to the generalized beta,





## Coolant Distribution Unit (CDU) , Trane Commercial HVAC

Trane's CDU is a reliable, sustainable coolant distribution unit for data centers and IT cooling systems. It provides 1MW direct-to-chip liquid cooling.



## Coolant Distribution Units (CDUs) For Data Centers

Coolant Distribution Units (CDUs) For Data Centers In the relentless quest for peak performance, CDU data center systems have become the

## Unit Of Work in Repository Pattern

Unit of Work in C# Repository Pattern The Unit of Work Pattern in C# groups one or more operations (usually database CRUD operations) into a single



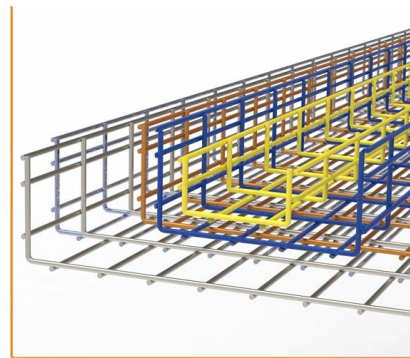
## Power Distribution Units (PDUs) for Data Centers

LayerZero ePODs Power Distribution Units (PDUs) deliver reliable, safe power distribution for data centers, AI infrastructure, semiconductor fabs, and other



## EcoStruxure(TM) Row Data Center

Discover EcoStruxure Row Data Center pre-engineered, highly configurable, and scalable row solutions with racks, power, cooling, and management systems.



## Contact Us

---

For datasheets, pricing, or custom telecom energy solutions, please visit:  
<https://www.koskolong.co.za>