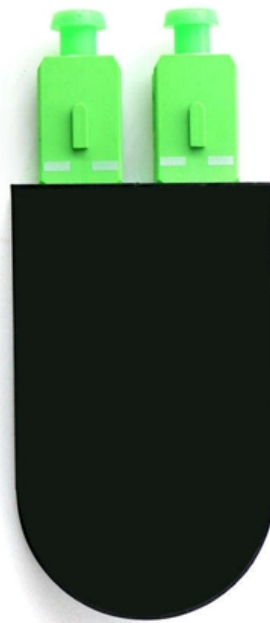




Adam Tas Corridor Energy

Unit mass of galvanized cable trays



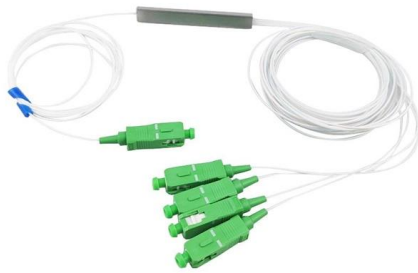


Overview

Let's assume the following specifications for a galvanized steel channel tray:
Using the formula: Weight per meter (Wm)= (100+50)×1. The mechanical and electrical characteristics, tests, certifications, overall quality management, recommendations mentioned. Order codes SBH & CNH, ABB offers steel cable tray with pre-galvanized and hot-dip galvanized galvanization is an economical and effective way to protect steel against corrosion, naturally oxidizes when exposed to air, but at a much slower rate than steel. EAE cable trays and ladders provide high-strength cable protection that protects the cables from external factors.



Unit mass of galvanized cable trays



How To Calculate Weight Of Cable Tray » Wiring Work

Understanding how to calculate the weight of a cable tray is essential for those who are involved in electrical wiring and electrical installations. Knowing



Cable Tray Weight Specifications

The document provides reference material on cable tray weights for different tray series and configurations. It lists the weights of steel and

Cable Tray Technical Guide A practical guide to product selection and

In designing supports for a cable tray system, consideration should be given to the loads associated with future cable additions and any additional loading that may be applied to the cable tray system (e.g.,

REINFORCED VIRGIN PVC TRUNKING
Superior Crush Resistance

ISO 9001
ROHS
CNAS

37.6MPA Tensile Strength	2856MPA Elastic Modulus
9.8KJ/M² Impact Strength	1.54G/CM Density

GUIDE CABLE TRAYS TECHNICAL

cable trays are equivalent. The mechanical and electrical characteristics, tests, certifications, overall quality management, recommendations mentioned in this technical guide only apply to our own cable



aluminum side rails and



ET CABLE TRAY

600 12/3m ET3600G A 12.7/3m ET3600H A (MTO). Supplied in 3m lengths. See pages 50-51 for assembly instructions for ET Cable Tray. Fasteners required for installation. Order codes SBH & CNH.



Cable Tray Dimensions Guide: Standard Sizes, Tray

Explore standard sizes by tray type, understand width and depth limits, and see how to calculate and choose compliant cable tray sizes for real projects.



Technical Data Sheet Cable Tray System

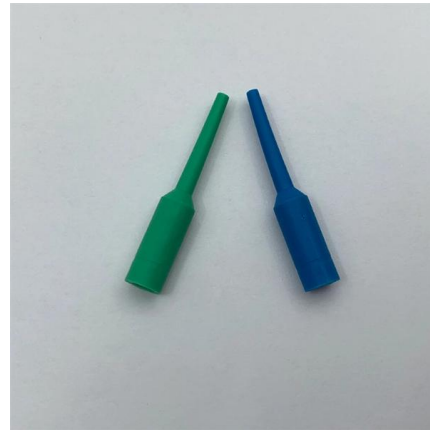
Each type of Cable Tray is a total system, and by utilising associated parts (Stand-off Brackets, Bends Tees etc.) it will allow a total site install solution, reducing labour and down time.





Hot-Dipped Galvanized Ladder Tray

Rigid, hot-dip galvanized Cope cable trays ensure safe, easy installation and meet NEMA VE-1 standards.



Cable Tray Weight Specifications , PDF , Computers

This document provides specifications for medium duty perforated and solid cable trays. It lists the part numbers, widths, and weights per meter of cable trays with

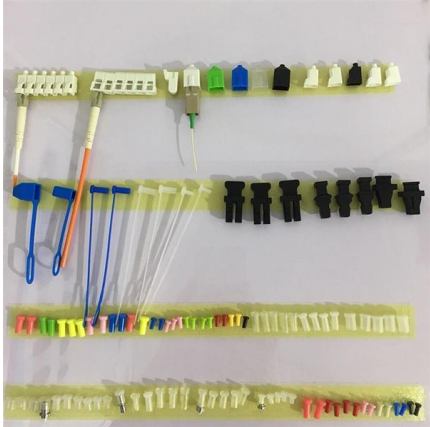
Cable Tray Technical Specifications , PDF

The document provides a technical data sheet for cable trays including ladder and perforated types. It lists specifications for material, thickness, dimensions, loading



cable tray technical specifications

It should be noted that independent testing has been carried out to verify the structural performance of cable tray at the minimum and maximum temperature classifications for test conditions. They should



How to Choose Galvanized Cable Tray You need to know

Learn how to choose the right galvanized cable tray for safe, efficient cable management: compliance, load capacity, and installation tips.



TECHNICAL DATASHEET PREGALVANIZED CABLE TRAYS

PUHCT UNIVERSAL IMPERFORATED CABLE TRAYS
Pregalvanized (TS EN 10346 - TS EN 10143)
Description



Cable Tray Weight and Size Details

This document contains details of galvanized iron perforated cable trays including tray size, color, thickness, tray length, weight of individual trays, total weight,





Microsoft Word

3.1 Cable trays & accessories shall be of two types, namely ladder type and perforated type. Technical particulars are specified in data Sheet-A and drawings enclosed with this specification.

Cable Tray Technical Specifications , PDF

The document provides a technical data sheet for cable trays including ladder and



Microsoft Word

BANGALORE CABLE TRAYS (An ISO 9001:2015 Certified Company) (Manufacturer of Perforated & Ladder Cable trays, Ceiling & Floor Raceways, Junction Boxes & Accessories) No.42/2, 2nd 'A'

Cable Tray Technical Guide A practical guide to product selection and

Cable Tray Technical Guide A practical guide to product selection and installation This guide for engineers and installers has been developed by ABB as a practical reference regarding cable tray



Cable Tray Specifications and Sizes

The document specifies requirements for cable trays, including that they be fabricated from galvanized sheet steel in standard lengths and widths. It provides



Cope Ladder Master Spec

All covers and splice plates must also be hot-dip galvanized after fabrication; mill galvanized covers are not acceptable for hot-dipped galvanized cable tray. All hot-dip galvanized after fabrication steel



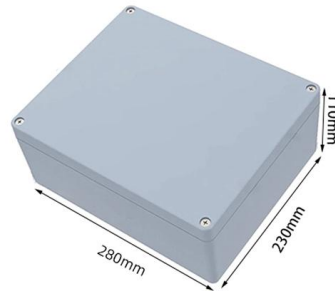
Instrument Cable Tray Load Calculation: A Detailed Guide

Cable tray systems are essential for supporting and routing instrument cables in industrial and commercial installations. Proper load calculation ensures the



Cable Tray , EAE Electric , Medium & heavy duty cable

EAE cable trays and ladders provide high-strength cable protection that protects the cables from external factors. EAE cable trays are mass produced with the 'Roll



cable tray technical specifications

Armorduct cable tray systems are usually assembled using M6 roofing bolts particularly for couplers, fishplates and connection to supporting framework. It should be noted that independent testing has

Cable Ladder Cable Tray Weight Calculation Guide

In this guide, we'll walk you through the step-by-step process for calculating cable tray weight, while providing examples for both channel trays and



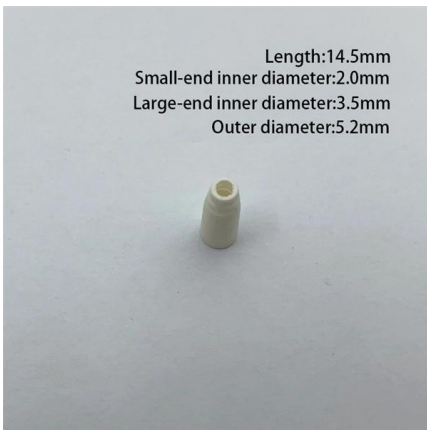
CABLE TRAY

SFSP produces a variety of products ranging from cable management systems; cable trays, cable ladders, basket trays, trunkings and support systems, to mechanical cladding fixations, steel lintels



Hot-Dip Galvanized vs. Aluminum , Cable Tray Institute

Increasingly, however, aluminum is becoming the material of choice for cable tray systems. In these days of shrinking construction budgets, why would engineers, contractors, and end users choose



CABLE TRAY

We manufacture a wide range of products capable of providing the characteristics which respond to the proposed application, along with quality of assembly, speed of installation, and cost-saving cable trays.

Contact Us

For datasheets, pricing, or custom telecom energy solutions, please visit:
<https://www.koskolong.co.za>