



**Adam Tas Corridor Energy**

# **Uruguay 3-Year Warranty Erbium-Doped Fiber Amplifier PAM4**





## Uruguay 3-Year Warranty Erbium-Doped Fiber Amplifier PAM4

---



### Erbium Ytterbium Doped Fiber Amplifier, Up to 37 dBm

The Optilab EYDFA-XX-PM-R Erbium Ytterbium Doped Fiber Amplifier (EYDFA) is a high-power, versatile amplifier designed for MOPA, optical communication and other general-purpose optical

### EDFA , Erbium-doped fiber amplifiers , NIR-SWIR

Our EDFAs are engineered to boost your laser's output power while retaining its critical beam properties--such as linewidth, pulse width, and beam



### EDFA (Erbium Doped Fiber Amplifier) - Physics and

EDFA (Erbium-Doped Fiber Amplifier) is an optical device used to compensate optical signal attenuation caused by fibers and components, to increase optical

### EDFA

EDFA's, Erbium Doped Fiber Amplifiers with Output Power up to 10W, HIGH POWER EDFA Amplifiers



### **Erbium Ytterbium Doped Fiber Amplifier (EYDFA) - PPC**

PPC's high power Erbium Ytterbium Doped Fiber Amplifier (EYDFA) is characterized by low noise and high linearity performance to meet the most demanding

### **15 Must-Know Questions for Erbium-Doped Fiber Amplifiers (EDFA)**

As the optical signal enters the doped fiber core, erbium ions absorb energy, get excited, and emit synchronized photons at the same wavelength, amplifying the signal.



### **Erbium-Doped Fiber Amplifiers: Ultimate Guide**

Discover the principles, applications, and benefits of Erbium-Doped Fiber Amplifiers in modern optics and telecommunications.





## Erbium-Doped Fiber Amplifiers (EDFAs): Foundations

The combined beam passes through the erbium-doped fiber, where the signal is amplified through interaction with the excited erbium ions. The output



## Erbium/Ytterbium doped fibers

Exail develops a full range of Erbium Ytterbium doped optical fibers dedicated to a wide range of fiber lasers. Exail proposes a wide range of erbium/ytterbium

## What is an Erbium Doped Fiber Amplifier (EDFA) and

Learn about Erbium-Doped Fiber Amplifiers (EDFAs) and their crucial role in optical networks. Discover EDFA working principles, applications in



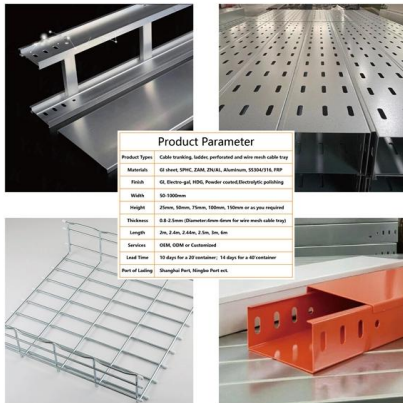
## Erbium-Doped Fiber

Erbium doped fiber amplifier (EDFA) is defined as a crucial component in advanced wavelength division multiplexing (WDM) systems that provides optical gain over a wide wavelength range, typically



## Datasheet

Fiber sensing Warning: High-power EDFA units are susceptible to damage from strong optical reflections, particularly those caused by improper connector mating. Agiltron's Erbium-Doped Fiber



## Specialty Doped Fiber , Fibercore

Dual Clad Erbium/Ytterbium doped Fiber - All glass fiber used in high power amplifiers (YEDFAs) for use up to 5W pump power. Utilizing Fibercore's petal shape design, the CP1500Y fiber has been

## MPB Communications EFA-P18 C+L Band Erbium

EFA-P18 C+L Band Erbium-Doped Fiber Amplifier from MPB Communications , Buy Today from Artisan. 30-Day Return Guarantee. 1-Year Warranty. Fast Shipping.





## Space-Qualified Erbium/Ytterbium Fiber Amplifier

These Erbium-Doped Fiber Amplifiers (EDFAs) are engineered for a long operational lifespan, typically designed to function reliably for over 10 years. This durability is achieved through high-quality

## EAD-40-C IPG Photonics (Erbium Doped Fiber)

EAD-40-C Erbium Doped Fiber Amplifier from IPG Photonics , Buy Today from Artisan. 30-Day Return Guarantee. 1-Year Warranty. Fast Shipping.



## 15 Must-Know Questions for Erbium-Doped Fiber

EDFA stands for Erbium-doped fiber amplifier, a vital element in optical communication systems. In this article, we'll delve into 15 key questions

## What Is an EDFA (Erbium-Doped Fiber Amplifier)?

An Erbium-Doped Fiber Amplifier, commonly referred to as EDFA, is a crucial component in the realm of optical communications. These devices have significantly revolutionized the way data



### The Effect of Erbium-Doped Fiber Amplifier on CO

Abstract Erbium-doped fiber amplifier (EDFA), as a key device in the photoacoustic spectroscopy gas detection system, has a large impact on the system performance. Therefore, in this



### What is an Erbium-Doped Fiber Amplifier(EDFA) in

An Erbium-Doped Fiber Amplifier boosts optical signals in fiber networks, enabling long-distance communication with minimal loss and high



### Exploration of Optical Amplifiers Based on Erbium (Er

This paper proposes the improvement of EDFA amplifier properties by adding additional segments of Yb 3+ doped fiber. Experimental demonstration of a combined erbium-ytterbium doped fiber amplifier



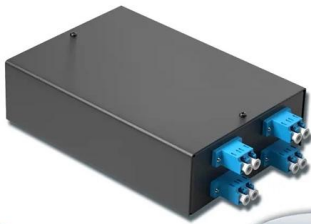
### EFA-R35/130 MPB Communications (Benchtop Erbium)

EFA-R35/130 Benchtop Erbium Fiber Preamplifier from MPB Communications , Buy Today from Artisan. 30-Day Return Guarantee. 1-Year Warranty. Fast Shipping.



4-port 8-core LC wall-mounted fiber terminal box (empty frame)

Surface painted    Scientific plate fiber    Cold-rolled steel plate



Lifetime quality assurance

Free shipping

Customizable for telecommunication

**such/ignore.txt at main · yeerma/such · GitHub**

aasdadasda. Contribute to yeerma/such development by creating an account on GitHub.

### 89e11a01c118fae4!!!! , PDF

Scribd is the world's largest social reading and publishing site.



## Erbium-doped Fiber Amplifiers

Erbium-doped fiber amplifiers use erbium-doped fibers. They typically operate in the 1.5- $\mu\text{m}$  spectral region and are most frequently used for telecom systems.



## EDFA-1C3321313 Agiltron (Erbium-Doped Fiber)

EDFA-1C3321313 Erbium-Doped Fiber Amplifier from Agiltron , Buy Today from Artisan. 30-Day Return Guarantee. 1-Year Warranty. Fast Shipping.



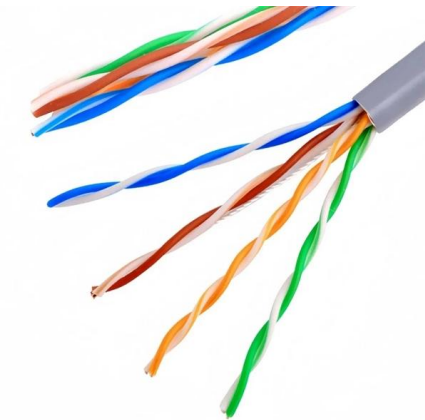
## Erbium Doped Fibers , Rare Earth Doped Optical Fibers

F-EDF erbium doped fibers provide the basic building block to fiber optic amplifiers used in broadband optical networks in the 1550 nm transmission window. These erbium doped fibers deliver gain





Hier sollte eine Beschreibung angezeigt werden, diese Seite lässt dies jedoch nicht zu.



### **Er-Yb Co-doped Fibre Amplifier Performance Enhancement for**

Er-Yb-doped fibre amplifiers utilize erbium-ytterbium double-clad, large-core fibre technologies to achieve high output power at low cost. The erbium-ytterbium-doped fibre amplifier

## **Contact Us**

---

For datasheets, pricing, or custom telecom energy solutions, please visit:  
<https://www.koskolong.co.za>