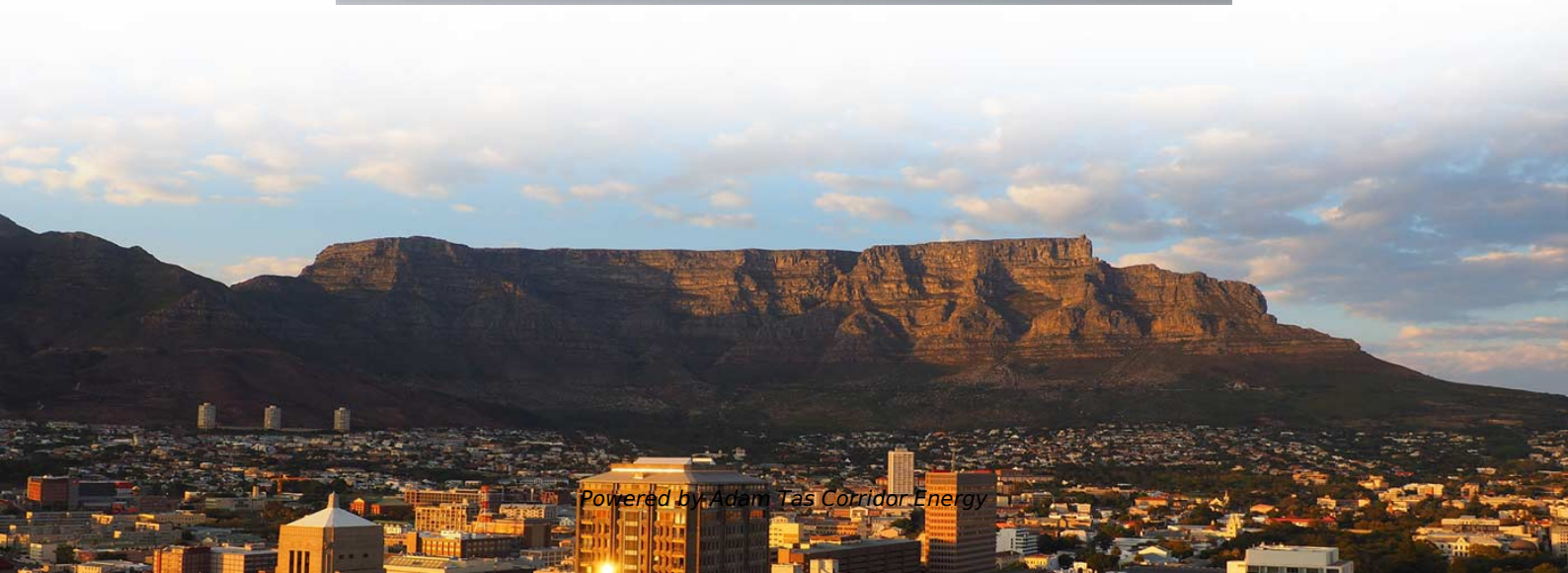
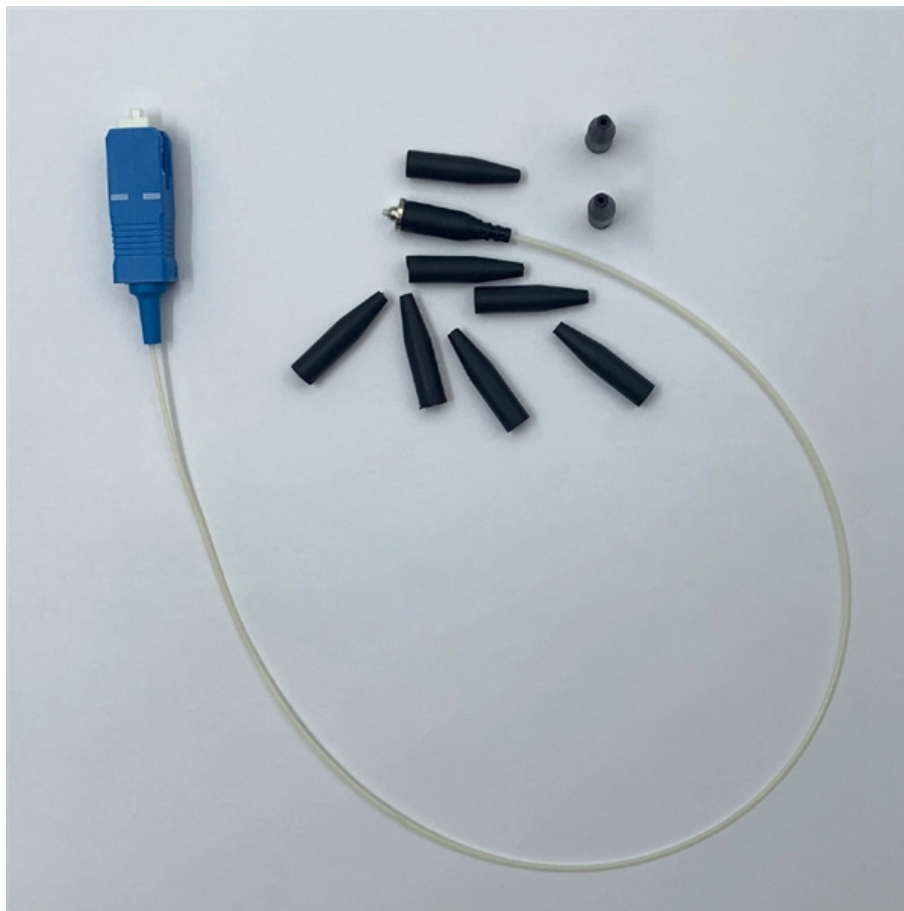




Adam Tas Corridor Energy

Various elbow fittings for cable trays





Overview

These fittings come in two main types: Horizontal Elbows are used for turns on the same flat plane, typically available at 45 deg or 90 deg. The main types of accessories are categorized by their function: Fittings change the path or size of the run, including Elbows (for horizontal or vertical direction changes), Tees and Crosses (for multi-directional junctions), and Reducers (to transition between different tray widths). All fittings are available in sizes and types corresponding to the straight cable tray sections. Cable tray accessories: horizontal elbows, vertical elbows, and straight connectors Cable tray accessories, including horizontal elbows, vertical elbows, and straight connectors, are essential components for efficient and secure cable tray installations in various industrial and commercial. Whether your system uses ladder cable trays, perforated trays, wire mesh trays, FRP, aluminum, stainless steel, or galvanized steel, these. Refer to the product sheets for more information on product details and compatibility.



Various elbow fittings for cable trays

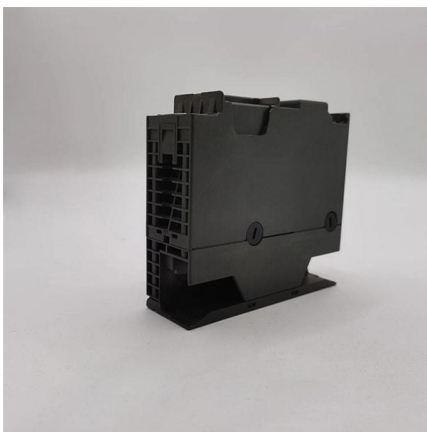


Cable Trays and Fittings

Streamline cable management with our cable trays and fittings. Browse our selection for reliable, durable options tailored to your project requirements.

Cable Tray Technical Guide A practical guide to product selection and

In designing supports for a cable tray system, consideration should be given to the loads associated with future cable additions and any additional loading that may be applied to the cable tray system (e.g.,



Elbow 90° RES

RES 85.500 Elbow 90° for cable tray, 85x502 mm, with unperforated side beams, steel, pre-galvanised according to DIN EN 10346, incl. accessories Add to Cart EUR0.00 Excl. 0% VAT EAN 4013339238804

Cable Tray Fitting Accessories

Cable tray fitting accessories, also known as cable tray accessories, are a wide range of components used to connect, support, or change



Standard Cable Tray Types and Fittings

This document describes the types, materials, dimensions, and fittings for standard cable tray systems. It outlines ladder, perforated, solid bottom, trough, channel,



A Guide to Cable Tray Accessories and Their Functions

Cable tray elbows, tees, crosses, and reducers are essential fittings used to maintain the proper routing and support of electrical cables within a tray



Elcon Trays Catalogue

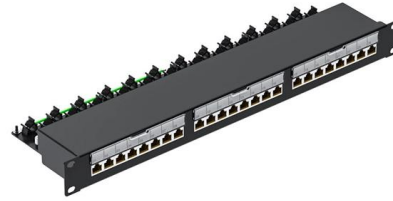
This range essentially includes Cable Terminals & Lugs, Copper Tubes & Fittings, Condensing Pot, Junction Box, Lightning Arrestor, Pipe Fitting, Push Button Station, S.S. Tube & Fitting and Valves &





Cable tray accessories: horizontal elbows, vertical elbows, and

Cable tray accessories, including horizontal elbows, vertical elbows, and straight connectors, are essential components for efficient and secure cable tray installations in various industrial and



Cable Tray And Fittings , Graybar Store

A cable tray system is used to support insulated electrical cables used for power distribution, control, and communication. Cable trays are used as an alternative to open wiring or electrical conduit

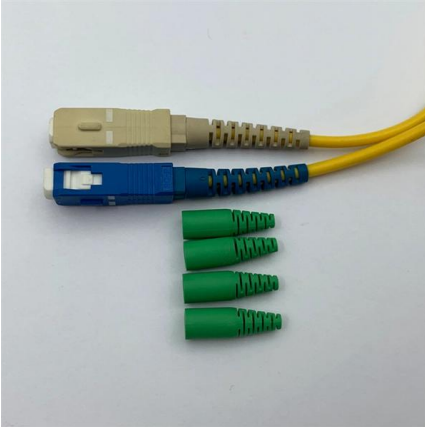
CABLE TRAY SYSTEMS GUIDE

Material: Side Rails: Fitting side rails are I-beams with overall dimensions similar to straight tray sections. Rungs and Bottoms: Rung and Bottom designs are identical to similar straight cable tray



Cable tray fittings and accessories

What types of cable tray fittings are used for direction changes? Common fittings include 30 deg, 45 deg, 60 deg, and 90 deg horizontal bends, vertical risers, and



Types of Cable Trays - Purpose, Advantages,

Cable tray is alternatives to wire ways and electrical conduits, which completely enclose cables. Study types of cable trays, purpose, advantages.



60° Horizontal Elbow , Cable Tray Systems , PUPCO

CABLE TRAYS 60° Horizontal Elbow Product Description The 60° Horizontal Elbow All fittings have 3" tangents at the end of curved side rails Fittings are available in

Fiberglass Cable Tray Horizontal Elbows 45°

Compact fiberglass 45 degree horizontal bend fitting for Cope cable tray systems--pre-drilled for easy installation.





Vertical Cable Support Elbow , Ladder Trays , Cable Tray and Reels

The aluminum I-beam design of ITray is perfect for industrial installations with large diameter cables in long span situations, minimizing total tray width and creating a smooth transition between straight

Cable Tray Technical Guide A practical guide to product selection and

Cable Tray Technical Guide A practical guide to product selection and installation This guide for engineers and installers has been developed by ABB as a practical reference regarding cable tray



Solved: Cable Tray Elbow

Solved: Good day, In need to create an elbow that starts at a right angle and that has the ability adopt the angle of the routing of the cable tray.

90 degree cable tray elbow

Types of 90-Degree Cable Tray Elbow A 90-degree cable tray elbow is a critical component in electrical installations, enabling smooth directional changes in cable routing systems. These elbows ensure



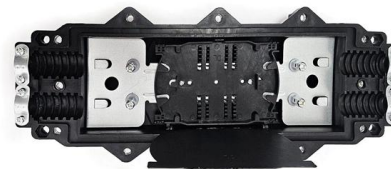
Cable Tray Accessories , Hangers, Supports & Fittings

Shop cable tray accessories including hangers, elbows, covers, and supports. RS Philippines offers durable fittings for industrial cable management systems.



Cable Tray Fitting creation (Elbow Bend)

I am having a problem creating a cable tray fitting, I did the best I could (see attached), however still doesn't want to connect automatically. please help !!



Elbow for electrical supply cables , wire channels , trays , metal

Metal elbows for cable trays are an essential component in electrical installations, ensuring safety, durability, and aesthetic appeal. They are an excellent choice for industrial, commercial, and

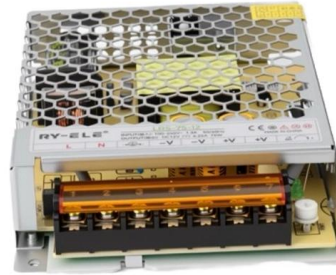




CABLE TRAY, CABLE LADDER, CABLE TRUNKING CATALOGUE

Fitting and accessories, with the same or different width of the cable run. All fittings are available in sizes and types corresponding to the straight cable tray sections. These fittings include:

- elbow,



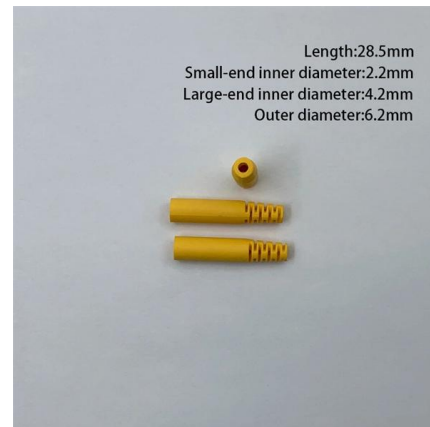
45° Vertical Elbow , Cable Tray Systems , PUPCO

Discover our 45° Vertical Elbow for cable tray systems. Seamlessly transition between sections and fittings, reducing tray width. Contact us today!



90 Degree Horizontal Elbows Catalog , PDF , Dimension

The document provides specifications for metallic cable tray elbows and fittings, including catalog numbers, dimensions, and fitting series. It details the standard



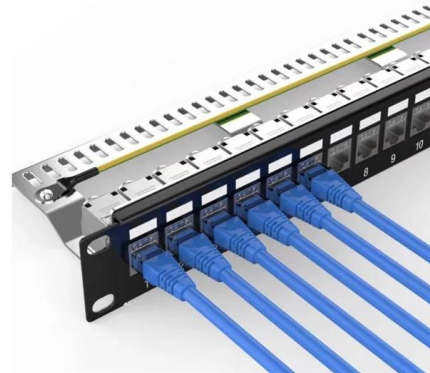
Aluminum Channel Horizontal Elbows 45°

45 degree aluminum channel bend fitting for cable trays, supports smooth cable routing and flexible installation.



Elbow 45° KKC

Refer to the product sheets for more information on product details and compatibility.



Aluminum Channel Horizontal Elbows 90°

Aluminum channel tray bend for cable support with solid or ventilated options. Includes splice plate for easy installation.

Elbow 45° RBAS

RBAS 100.500 S Elbow 45° for cable tray, 100x500 mm, with unperforated side profiles, steel, pre-galvanised according to DIN EN 10346, incl. accessories Add to Cart



Contact Us

For datasheets, pricing, or custom telecom energy solutions, please visit:
<https://www.koskolong.co.za>