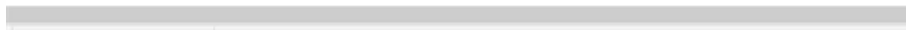




**Adam Tas Corridor Energy**

# **Vertical Shaft Cable Tray Flat Iron Grounding Specifications**





## Vertical Shaft Cable Tray Flat Iron Grounding Specifications

---



### Equipment Grounding Conductors for Cable Tray Systems

The intent of this article is to review grounding practices for cable tray wiring systems. The Equipment Grounding Conductors are the most important conductors in the electrical systems. The Equipment

### B-Line series Cable Tray Design Considerations

As an industry leader in cable tray, Eaton offers one of the widest ranges of cable management solutions available in the market today with its B-Line series portfolio. With unmatched quality and service, we



### A Guide to Installing and Supporting Electrical Cable Trays

A professional guide to installing electrical cable tray systems per NEC Article 392. Covers support, securing cables, and fill calculations.

### Equipment Grounding Conductors for Cable Tray Systems

Cable tray wiring systems have excellent safety and dependability records. These excellent



records are the result of cable tray's unique features plus the proper



### **B-Line series Cable Tray Design Considerations**

Our wind certification report provides you with list of acceptable B-Line series cable tray supports, fittings and covers based off of the environmental conditions, cable loading, and type of cable tray in your



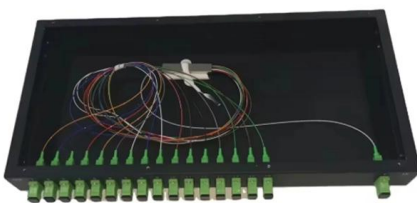
### **12-SDMS-06**

Fitting is a device, which is used to change the direction in either horizontal or vertical planes, or size of cable tray system. Fittings shall be of the same material as the straight section part of the cable tray.



### **Practices for grounding and bonding of cable trays**

Grounding and bonding of cable trays There are three wiring options for providing an EGC in a cable tray wiring system: An EGC conductor in or on





## Cable Tray Installation Rules (NEC 392) - Electrical Trader

Core rules for selecting, installing, grounding, and filling cable trays--clearances, materials, separation, and bonding explained.



## Cable Tray SHIB NAL

Cable trays are not raceways, but they are treated as a structural component of a facility's electrical system. Cable trays are a part of a planned cable management system to support, route, protect and

## NEC Standards for Cable Trays: Grounding, Fill Capacity

This article provides a comprehensive framework that governs various aspects of cable tray installations, including the types of cables that are deemed acceptable for use, requirements for



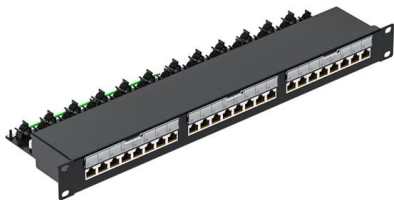
## SECTION 260536

Include scaled cable tray layout and relationships between components and adjacent structural, electrical, and mechanical elements. Show the following: Vertical and horizontal offsets and



## B-Line series Cable Tray Design Considerations

Is your cable tray system optimized for safety, dependability, space and cost savings? Cable tray (or cable ladder) systems are a popular alternative to electrical conduit systems, as they have an



## Practices for grounding and bonding of cable trays

A bare copper equipment grounding conductor should not be placed in an aluminum cable tray due to the potential for electrolytic corrosion of the aluminum cable tray in a moist environment. For such

## IEC Standard for Cable Tray: Complete Technical Guide

When cable trays are used as part of an earthing path, they must meet specific resistance limits. IEC 61537 mandates that trays used for bonding or





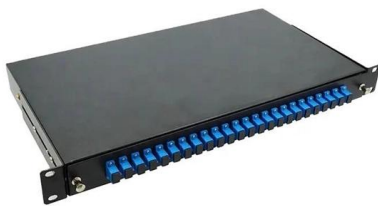
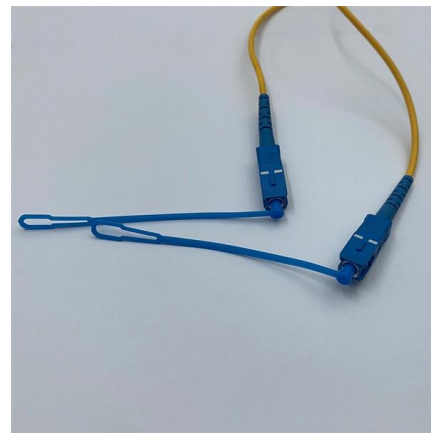
SC connector  X 12

## Types of Cable Trays - Purpose, Advantages,

Cable tray is alternatives to wire ways and electrical conduits, which completely enclose cables. Study types of cable trays, purpose, advantages.

## Equipment Grounding Conductors for Cable Tray Systems

Cable tray have excellent safety and dependability records, because of the result of cable tray's unique features plus the proper design and installation.



## IEEE 525-2007\_accepted

IEEE-SA Standards Board Abstract: The design, installation, and protection of wire and cable systems in substations are covered in this guide, with the objective of minimizing cable failures and their

## Practices for grounding and bonding of cable trays

All metallic cable trays shall be grounded as required in Article 250.96 regardless of whether or not the cable tray is being used as an equipment grounding conductor (EGC).



### 12-SDMS-06

Metallic cable trays shall be grounded to the grounding network to limit voltages during fault condition and electrically continuous per Section 392 of ANSI/NFPA 70.



### Cable Tray Grounding: Electrical and Non-Power Conductors

To meet this requirement some manufacturers recommend that the cable tray system be bonded to the facility ground system every 50-60 feet. By bonding the tray system every 50' -60' the



### What is a Vertical Cable Tray?

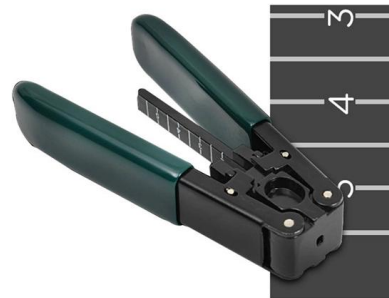
What is a vertical cable tray? This guide explains its types (ladder, solid-bottom), benefits for safety & organization, and key applications in data





## Best Practice Guide to Cable Ladder and Cable Tray Systems

These guidelines will be particularly useful for the design, specification, procurement, installation and maintenance of these systems. Cable ladder systems and cable tray systems are designed for use



## CABLE TRAY SYSTEMS GUIDE

Some applications may require the cable tray to support the weight of a single, dead object in addition to the cable loads. Specifications typically require this to be applied at the midpoint of the span between

## Cable Tray Technical Guide A practical guide to product selection and

Cable tray is considered to be a system. It must provide continuous support for cables, and the electrical continuity of the cable tray system must be maintained.



## Contact Us

---

For datasheets, pricing, or custom telecom energy solutions, please visit:  
<https://www.koskolong.co.za>