



Adam Tas Corridor Energy

Vertical cable trays and ordinary cable trays





Vertical cable trays and ordinary cable trays



Cable Tray Ladder Trunking Wire Basket Installation

Cable trays are available in different configurations, straight sections are available to route cables in a horizontal or vertical plane. Fittings are available to route cables

Cable Tray Types and Sizes

Explore various cable tray types and sizes for electrical installations. Learn about ladder, perforated, solid-bottom, wire mesh, and channel trays in this complete



Types of Cable Trays: Ladder, Perforated, Basket, Solid

Explore all types of cable trays--ladder, perforated, basket, solid, and channel. Learn their uses, materials, pros, cons, and key differences.

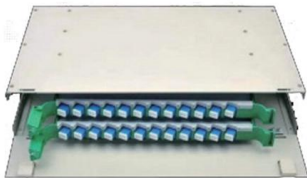
Cable Tray

The NEMA Cable Tray Institute was created in 1991 to support the cable tray industry by engaging in research, development, and education outreach. For technical guidance and



CABLE TRAY

Cables may be fastened to the cable tray by means of cable clamps or cable ties (See Figures 5.7 and 5.8). Generally, cables are fastened every 450 mm (18 in.) on vertical runs.



What is a Vertical Cable Tray?

What is a vertical cable tray? This guide explains its types (ladder, solid-bottom), benefits for safety & organization, and key applications in data



Instrumentation Cable trays Installation in vertical

The above issues can be minimized to a great extent if we can install the instrumentation cable trays in vertical orientation .Although a little bit higher



FAQ , Cable Tray Institute

Cable Tray System FAQs National Electrical Code
Question: We have a customer who would like to install the majority of cable tray in his new industrial facility in what I call an "Edge-Wise" orientation.

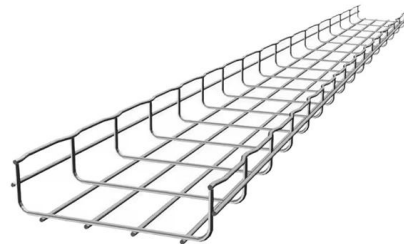


Cable Tray Technical Guide A practical guide to product selection and

A practical guide to product selection and installation This guide for engineers and installers has been developed by ABB as a practical reference regarding cable tray characteristics, installation, and

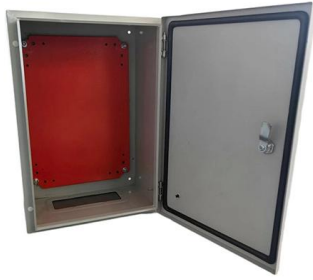
GENERAL INFORMATION

Cable trays or raceways often provide a convenient, safe and efficient method of fiber optic cable installation. Trays can be installed in ceilings, below floors and in riser shafts. When installing fiber



GUIDE CABLE TRAYS TECHNICAL

NEMA VE 1-2017 Specifies requirements for metal cable trays and associated fittings designed for use in accordance with the rules of Canadian Electrical Code, Part I and the National Electrical Code®



Cable Tray Type Selection

The only reason to select a ventilated trough cable tray over a ladder type cable tray is aesthetics. No drooping of small cables is visible. The ventilated trough cable tray does provide more support to the



Guide to cable support systems

Widths of 8 and 15 millimetres enable flexible adjustment to different cable trays, cable ladders and cable volumes. With the help of the matching SBV tightening strap locks and 576 spring chuck, the

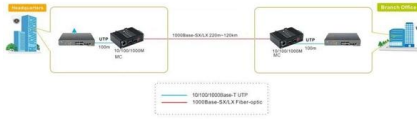
Types of Cable Trays and Their Applications

Cable trays are an essential component in modern infrastructure, having numerous use cases in various industries. In this blog, we will discuss the





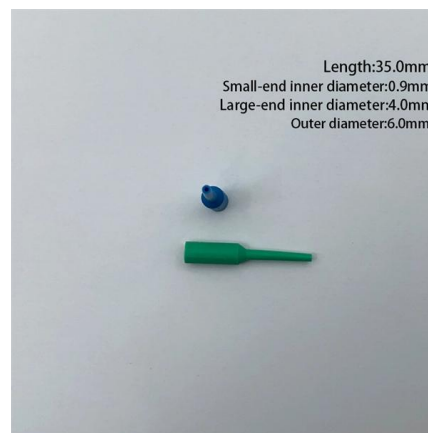
Tie Down Practices for Multiconductor Cables in Cable Trays



In non-horizontal cable tray runs, the cables must be tied down. For a vertical cable tray installation, the cables may hang away from the cable tray if they are not tied down. The more flexible small diameter

Cable Tray Systems: A Complete Guide to Types

Discover the essential guide to cable tray systems. Learn about ladder, trough, and wire mesh types, key components, and expert installation tips



Cable Tray Spacing Standards for Installation and Safety

Key Factors Impacting Cable Tray Spacing
Understanding cable tray spacing is key to meeting safety regulations and maintaining system



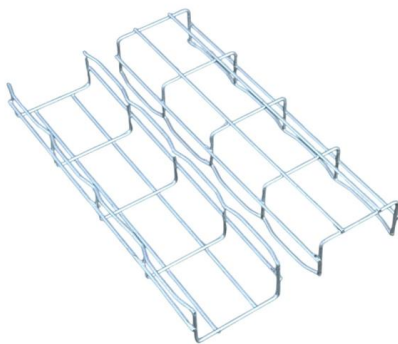
7 Types of Cable Trays: How to Choose the Right One

Cable tray systems are engineered support structures designed to route, support, and protect insulated electrical cables used for power distribution,



Ultimate Guide to Cable Tray Selection - Types,

Learn how to choose the best cable tray system for your needs. Explore types, materials, installation tips, and NEC compliance in this expert guide.



Cable Trays Installed Vertical In A Different Manner , Eng-Tips

Get any of your plant electricians to give their professional input on such an install, and after they stop laughing, they'll categorically say it's ridiculous: Your boss is advocating spending a



Types of Cable Trays - Advantages, Applications and Sizes

Explore the types of cable trays, their advantages, applications, and standard sizes. Learn how they improve cable management and support various industries.





Types of Cable Trays - Purpose, Advantages,

Cable tray is alternatives to wire ways and electrical conduits, which completely enclose cables. Study types of cable trays, purpose, advantages.

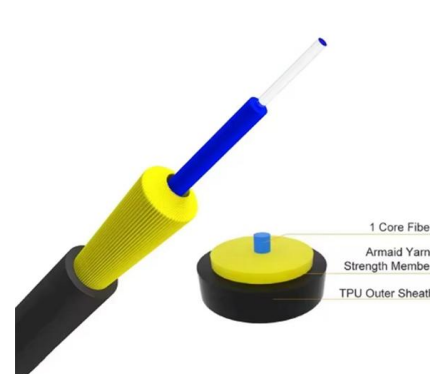


Types of Cable Trays - Advantages, Applications and Sizes

In this article, we'll explore the most common types of cable trays, their advantages, and the cable tray sizes available to help you choose the right one for your project.

Cable Tray Types and Sizes

Types of Cable Trays and Sizes Explore various cable tray types and sizes for electrical installations. Learn about ladder, perforated, solid-bottom, wire mesh,



Cable tray

In the electrical wiring of buildings, a cable tray system is used to support insulated electrical cables used for power distribution, control, and communication. Cable



Contact Us

For datasheets, pricing, or custom telecom energy solutions, please visit:
<https://www.koskolong.co.za>